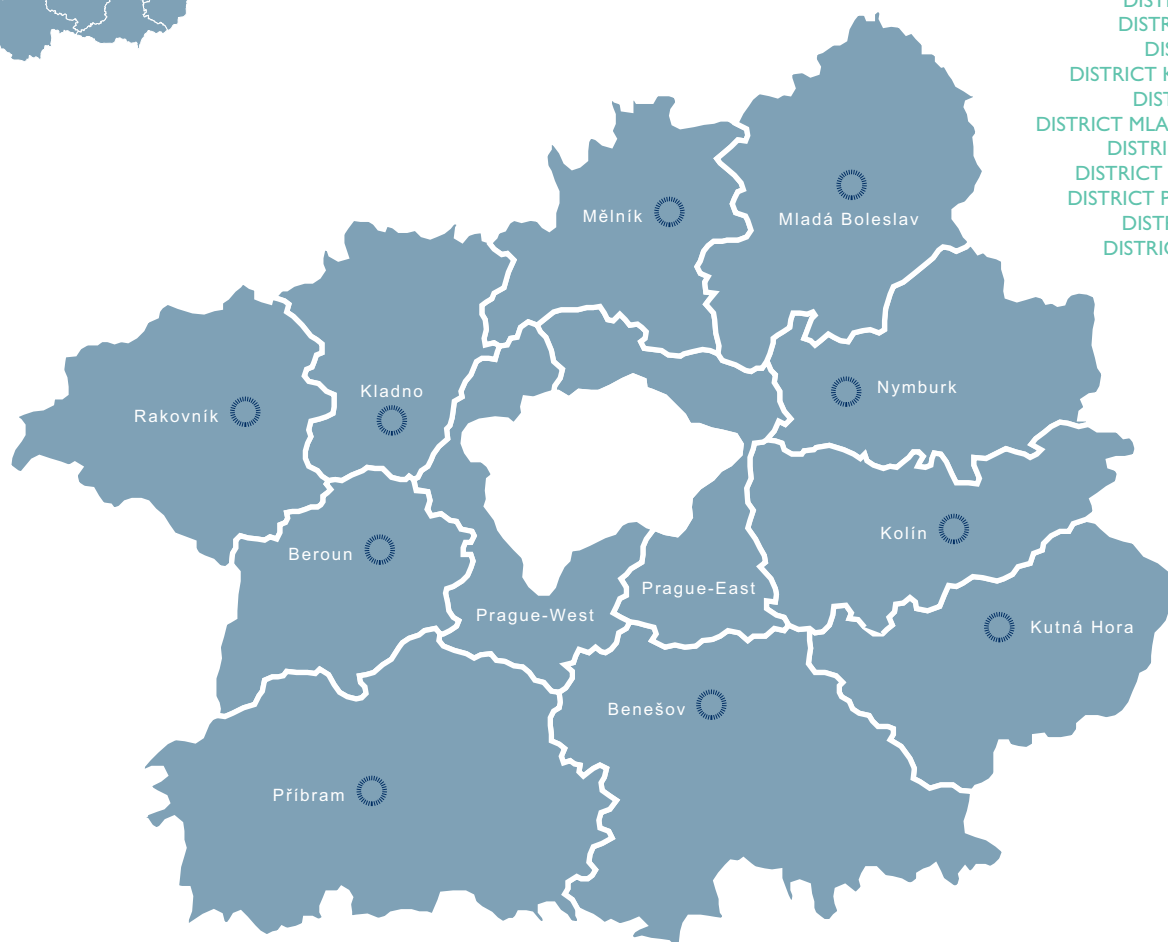


CENTRAL BOHEMIA REGION

DISTRICT BENEŠOV
 DISTRICT BEROUN
 DISTRICT Kladno
 DISTRICT KOLÍN
 DISTRICT KUTNÁ HORA
 DISTRICT MĚLNÍK
 DISTRICT MLADÁ BOLESLAV
 DISTRICT NYMBURK
 DISTRICT PRAGUE-EAST
 DISTRICT PRAGUE-WEST
 DISTRICT PŘÍBRAM
 DISTRICT RAKOVNÍK



ABOUT REGION

The region of Central Bohemia has a favorable position encircling the capital of Czech Republic. It is situated virtually in the middle of the country and neighbors eight other regions apart from Prague. The region (kraj) is divided among 12 districts (okres): Benešov, Beroun, Kladno, Kolín, Kutná Hora, Mělník, Mladá Boleslav, Nymburk, Praha-východ (Prague-East), Praha-západ (Prague-West), Příbram and Rakovník.

Central Bohemia is the largest of Czech regions. On January 1, 2009 its area amounted to 11,015 km² (14 % of Czech territory). The region's population (H1 2009) ranked third among the regions of Czech Republic with 1,228,751 persons, roughly 11.% of the country's population. There are altogether 1,146 communities in Central Bohemia i.e. 18.3 % of all communities in Czech Republic (the most of all regions). The administrative of the region is seated in Prague but its largest town is Kladno with 69,276 inhabitants. There are altogether 38 towns with a population exceeding 5,000 people in Central Bohemia.

Central Bohemia is a region used by most Prague citizens for their leisure and entertainment activities on weekends. Protected landscape areas (Křivoklátsko, Český kraj, Český ráj, Kokořínsko) and river basins of Sázava and Berounka are among the most popular destinations. Big tourist highlights are located in the historic downtown of Kutná Hora with St. Barbara's Dome, and Our Lady's Assumption cathedral in Sedlec. Kutná Hora has certain limitations in the capacity of its accommodation and in gastronomic services. Karlštejn castle – which is only now trying to get on the UNESCO World heritage list – is undoubtedly the most visited castle in Czech Republic. There are other significant castles in the region, namely Křivoklát, Točnick, Český Šternberk, Konopiště, Lány or Mělník.

Citizens of the region study mostly at universities in Prague. In the territory

of Central Bohemia there is just one public university – Faculty of Biomedical Engineering of ČVUT in Kladno. For private universities there is a branch of The Institute of Finance and Administration in Kladno, Academia Rerum Civilium in Kolín (political and social science university), Středočeský vysokoškolský institut (Central-Bohemian Academic Institute) in Kladno and Škoda Auto University in Mladá Boleslav. The Czech Academy of Sciences has several of its institutes seated in Middle Bohemia: Astronomical Institute (Ondřejov), Institute of Botany (Průhonice), Institute of Inorganic Chemistry and Nuclear Physics Institute (Řež).

Expenses per capita on research and science in Central Bohemia in 2004 amounted to 3.49% of GDP which places the region among top twenty regions of the EU. Economical structures of the region are in many respects complementing to those of Prague. Nevertheless, Central Bohemia is more concentrated on farming (Labe lowlands) and the manufacturing industry. The dominant position belongs to the car making industry (Škoda-Auto in Mladá Boleslav and TPCA in Kolín) and sectors linked to it. There are also some important machinery producers in the region. In some respects Central Bohemia gains from its proximity to Prague. The region's car making industry and technological cluster could have an impact on an inter-regional or international scale.

The region's potential stems from its closeness to the capital, complemented by integrated transportation systems directly connected to Prague. Roads and railroads of crucial importance pass through Central Bohemia. A high rate of immigration from other regions is one of its assets, as well as a multitude of landmarks and monuments, the extent of spending on research and sciences, the strength of the car making industry with a large network of sub-contractors and generally good conditions for development of industry.

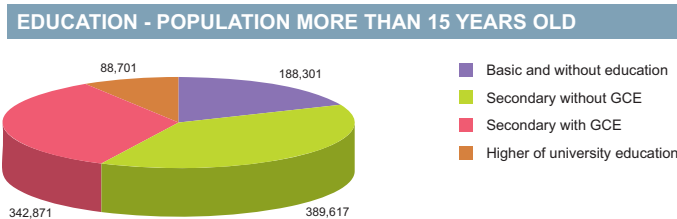
BASIC DATA	
Land Area	11,015 km ²

ACTUAL SITUATION ON LABOUR MARKET	
Population	1,228,751
Percentage in the total population of Czech Republic (%)	11.7
Population density (person/km ²)	111.6
Workforce	679,423
Number of job seekers	38,357
Unemployment rate (%)	5.5

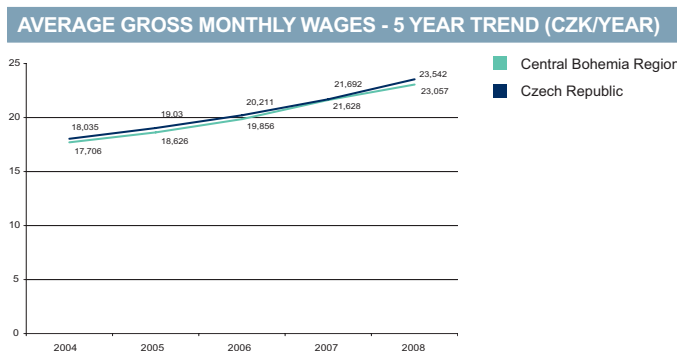
Source: Czech Statistical Office, Ministry of Labour and Social Affairs

NUMBER OF ECONOMIC UNITS ACCORDING TO PREVAILING ACTIVITY	
Total	293,024
Industry	38,227
Construction	39,109
Agriculture & forestry	16,842
Services	197,258

Source: Czech Statistical Office



Source: Czech Statistical Office



Source: Czech Statistical Office

GDP BY REGIONS				
Region	TOTAL		Per capita	
	mln. CZK	mln. EUR	Total CZK	Total EUR
Central Bohemia	382 657	15 342	322 364	11 610
Average GDP for Czech regions	252 161	10 110	341 989	13 711
Share in GDP of the Czech Republic	11%			

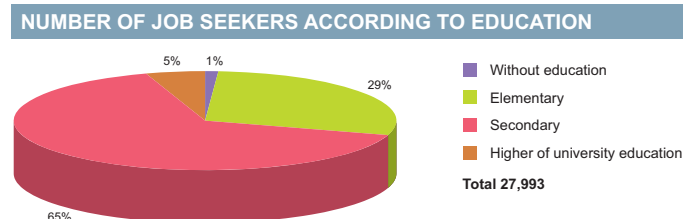
Source: Czech Statistical Office

ADMINISTRATIVE BREAKDOWN	
Number of districts	12
Number of municipalities	1,146
of that, number of towns	80

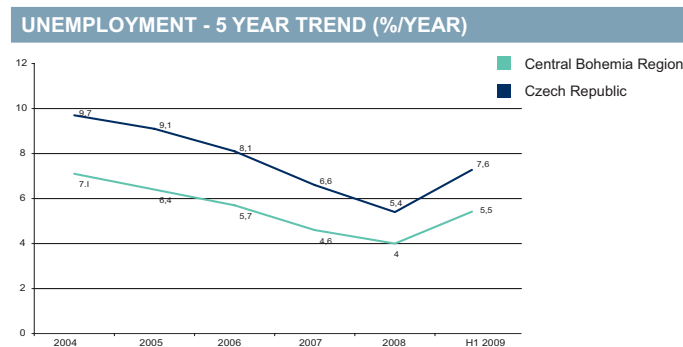
Source: Czech Statistical Office

NUMBER OF EMPLOYEES AND GROSS MONTHLY WAGES IN MANUFACTURING ACCORDING TO NACE CLASSIFICATION		
	Number of employees	Wages (EUR)
Manufacturing	100,823	1,061
Man. of food products, beverages and tobacco products	7,812	1,046
Man. of chemical, chemical products, pharmaceuticals, and chemical fibres	4,302	1,135
Man. of rubber and plastic products	7,171	994
Man. of basic metals and fabricated metal products	8,519	927
Man. and repairs of machinery and equipment	8,834	1,000
Man. of electrical and optical equipment	12,087	914
Man. of transport equipment	40,632	1,189

Source: Czech Statistical Office



Source: Ministry of Labour and Social Affairs



Source: Czech Statistical Office

FOREIGN DIRECT INVESTMENT		
Region	FDI (CZK)	FDI (EUR)
min.	17 940 192	673 937
Central Bohemia	231 288 887	8 688 538
max.	1 049 062 899	39 408 824
Average	145 150 799	5 452 697

Source: Czech National Bank

AVERAGE GROSS MONTHLY WAGES - 5 YEAR TREND										
Year	2004		2005		2006		2007		2008	
	CZK	EUR	CZK	EUR	CZK	EUR	CZK	EUR	CZK	EUR
Central Bohemia	17,706	555	18,626	625	19,856	701	21,628	779	23,057	924
Average for Czech Republic	18,035	565	19,030	639	20,211	713	21,692	781	23,542	944

Source: Czech Statistical Office

	Specification		
	Public/Private	Civil/Military/Varied	International/Intranational
Benešov	Public	Civil	Intranational
Benešov	Private	Civil	International
Bubovice	Public	Civil	Intranational
Čáslav	Private	Military	International/Intranational
Hořovice	Private	Civil	Intranational
Kladno	Public	Civil	Intranational
Kolín	Public	Civil	Intranational
Mladá Boleslav	Public	Civil	Intranational
Mnichovo Hradiště	Public	Civil	International
Příbram	Public	Civil	Intranational
Rakovník	Public	Civil	Intranational
Sázená	Public	Civil	Intranational
Slaný	Public	Civil	Intranational
Vlašim	Public	Civil	Intranational
Vodochody	Private	Civil	International
Zbraslavice	Public	Civil	Intranational

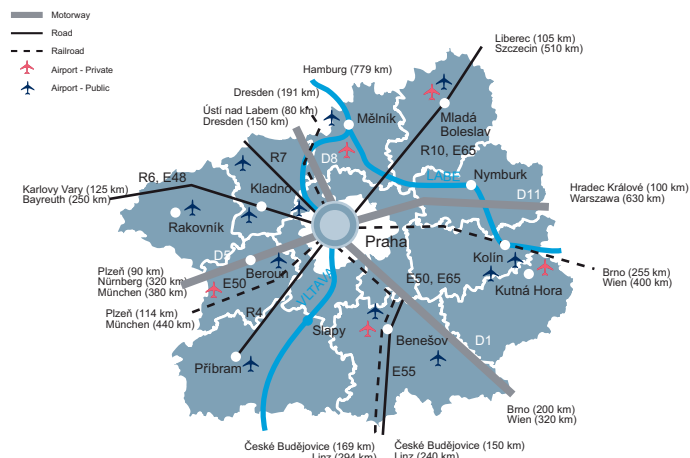
Source: Ministry of Transport, Aerobaze.cz

SCHOOL SYSTEM			
	Number of schools	Number of students	Number of graduates
Secondary schools			
Technical fields	n/a	13 471	3 267
Economic fields	n/a	13 772	3 533
ICT fields	n/a	3 490	796
Higher schools			
Technical fields	n/a	350	80
Economic fields	n/a	584	137
ICT fields	n/a	56	23
Universities			
Technical fields	n/a	n/a	n/a
Economic fields	2	1 051	150
ICT fields	n/a	n/a	n/a

Source: Institute for Information on Education

KNOWLEDGE OF FOREIGN LANGUAGES	
LANGUAGE	ALL SKILLS LEVEL (%)
English	58.7
German	40.2
French	6.1
Italian	2.8
Spanish	3.4
Polish	5.6
Russian	40.8
Nordic languages	2.2

Source: Augur Consulting



LABOUR OFFICE				
City	Address	Phone	Fax	E-mail
Benešov	Dukelská 2080, 256 01 Benešov u Prahy	317 763 611	317 763 657	posta@bn.mpsv.cz
Beroun	Okružní 333/26, 266 01 Beroun 1	311 699 111	311 699 113	beroun.up@be.mpsv.cz
Kladno	Dukelských hrdinů 1372, 272 01 Kladno 1	312 600 111	312 248 993	posta.up@kl.mpsv.cz
Kolín	Kutnohorská 39, 280 02 Kolín 2	321 613 600	321 721 566	kolin@ko.mpsv.cz
Kutná Hora	Benešova 70/2, 284 01 Kutná Hora 1	950 131 111	950 131 302	posta.up@kh.mpsv.cz
Mělník	Nová 204/3, 276 01 Mělník 1	315 639 911	315 625 104	melnik@me.mpsv.cz
Mladá Boleslav	Jaselská 292, 293 01 Mladá Boleslav 1	326 747 211	326 322 042	posta@mb.mpsv.cz
Nymburk	Dělnická 402/4, 288 02 Nymburk 2	325 510 911	325 510 916	posta@nb.mpsv.cz
Prague-east	nám. Republiky 3/4, 110 00 Praha 1	950 151 111	950 151 302	posta@py.mpsv.cz
Prague-west	Kartouzská 200/4, 150 00 Praha 5	950 152 111	950 152 302	posta@pz.mpsv.cz
Příbram	náměstí T. G. Masaryka 145, 261 01 Příbram 1	318 427 544	318 627 401	pribram@pb.mpsv.cz
Rakovník	nábř. T. G. Masaryka 2473, 269 01 Rakovník 1	313 286 111	313 513 023	podatelna@ra.mpsv.cz

Source: Ministry of Labour and Social Affair

Grafton Recruitment placed over 9200 people in the Czech Republic in 2008.

We have 13 Branch offices nationwide.

Choose a strong and professional staffing partner!

www.grafton.cz

grafton
recruitment
here to put you first

IMPORTANT COMPANIES IN THE REGION ACCORDING TO TURNOVER							
Name of company	Location	Employees	Activity (Sector)	Turnover	Phone	E-mail	WWW
Škoda Auto, a.s.	Mladá Boleslav II	10 000 - and more	Manufacture of motor vehicles	215 879	326 816 776, 326 811 756	info@skoda-auto.cz	www.skoda-auto.cz
Toyota Peugeot Citroën Automobile Czech, s.r.o.	Kolín I	1500 - 1999	Manufacture of motor vehicles	54 092	321 777 111, 321 715 365	info@tpca-cz.com	www.tpca-cz.com, www.tpca.cz
Penny Market, s.r.o.	Jirny	3000 - 3999	Retail sale in non-specialized stores with food, beverages or tobacco predominating	17 663	281 018 111	info@penny.cz	www.penny.cz
Behr Czech, s.r.o.	Mnichovo Hradiště	500 - 999	Manufacture of parts and accessories for motor vehicles and their engines	10 178	326 770 580, 326 770 514	sales.cz@behrgroup.com	www.behrgroup.com, www.behrgroup.cz
SAS Autosystemtechnik, s.r.o.	Mladá Boleslav II	250 - 499	Manufacture of parts and accessories for motor vehicles and their engines	9 977	326 735 280, 326 734 072		www.sas-automotive.com
Billa, s.r.o.	Modletice	2500 - 2999	Retail sale in non-specialized stores with food, beverages or tobacco predominating	8 830	323 625 111, 800 153 976	info@billa.cz	www.billa.cz, www.billa-clever.cz
Faurecia Exhaust Systems, s.r.o.	Bakov nad Jizerou - Horka	500 - 999	Manufacture of parts and accessories for motor vehicles and their engines	8 386	326 799 232, 326 799 111		www.faurecia.cz
AAA Auto, a.s.	Hostivice	1000 - 1499	Sale of motor vehicles	7 539	283 060 169, 283 060 606	vykup@aaaauto.cz	www.aaaauto.cz
Kostal CR, s.r.o.	Zdice - Černín	1500 - 1999	Manufacture of electrical equipment for engines and vehicles n.e.c.	6 474	311 653 911, 311 653 999		www.kostal.cz, www.kostal.com
Aero Vodochody, a.s.	Odolena Voda	2000 - 2499	Manufacture of aircraft and spacecraft	6 425	255 763 137, 255 762 223	vaclav.miskovsky@aero.cz	www.aero.cz
Cukrovary a lihovary TTD, a.s.	Dobruška	250 - 499	Manufacture of sugar	4 779	326 900 100, 326 900 103	kontakt@ttdcukrovary.cz	www.cukrovarytttd.cz, www.ttdcukrovary.cz
F.X. Meiller Slaný, s.r.o.	Slaný	500 - 999	Manufacture of parts and accessories for motor vehicles and their engines	4 043	312 577 137, 312 577 104	slany@meiller.com	www.meiller.com
Valeo Výměníky Tepla, k.s.	Žebrák	250 - 499	Manufacture of parts and accessories for motor vehicles and their engines	3 978	319 800 211, 319 800 200	hrzebrak@valeo.com	www.valeozebrak.cz
Fast ČR, a.s.	Říčany	250 - 499	Other retail sale of new goods in specialized stores	3 976	323 601 363, 323 605 884	info@fastcr.cz	www.fastcr.cz
Raab Karcher Staviva, a.s.	Rudná	500 - 999	Wholesale of wood, construction materials and sanitary equipment	3 881	311 670 397, 311 677 102	info@rkstaviva.cz	www.rkstaviva.cz, www.sauny-morava.cz, www.staviva.cz
ECK Generating, s.r.o.	Kladno - Dubí	25 - 49	Distribution and trade of gaseous fuels through mains	3 873	312 644 853, 602 378 565	eckg@eckg.cz	www.eckg.cz
Lego Production, s.r.o.	Kladno - Kročehlavy	500 - 999	Manufacture of games and toys	3 791	312 778 111, 312 811 111	lego@europe.lego.com	www.lego.com
Mountfield, a.s.	Mnichovice	n/a	Retail sale of hardware, paints and glass	3 574	255 704 217, 255 704 220	mountfield@mountfield.cz	www.mountfield.cz
Electric Powersteering Components	Slaný	100 - 199	Manufacture of electricity distribution and control apparatus	3 521	312 500 323, 312 500 333		www.epceurope.cz
Scania Finance Czech Republic, s.r.o.	Chrástany	10 - 19	Financial leasing	3 507	257 950 700, 251 095 127	info.scz@scania.cz	www.scania.com

Source: Albertina Company Monitor

SELECTED CZECHINVEST PROJECTS IN THE REGION					
Name	Location	Investor	Country	Sector	Year
AUFEEER DESIGN, s.r.o.	Mladá Boleslav	Aufeer Design	Slovakia	manufacture of motor vehicles	2007
Baxter BioScience s.r.o.	Bohumile	Baxter	USA	chemistry, pharmacy	2004
Behr Czech s.r.o.	Mnichovo Hradiště	Behr Czech	Germany	manufacture of motor vehicles	2005
BIOFERM - lihovar Kolín, a.s.	Kolín	BIOFERM - lihovar Kolín	Czech Republic	chemistry, pharmacy	2006
CEBALSOL s.r.o.	Velim	Cebal	Germany	other	2001
IRCR Manufacturing s.r.o.	Uničov	Ingersoll Rand	USA	manufacture of motor vehicles	2001
L I N E T spol. s r.o.	Slaný	Linnet	Germany	biotechnology, medical equipment	2007
Lasselsberger	Lubná u Rakovníka	Lasselsberger GmbH	Austria	other	2008
Lonza Biotec, s.r.o.	Kouřim	Lonza Biotec	Netherlands	biotechnology, medical equipment	2002
MITSUBISHI ELECTRIC AUTOMOTIVE CZECH s.r.o.	Slaný	Mitsubishi Electric	Japan	manufacture of motor vehicles	2000
Peguform Plastic s.r.o.	Nymburk	Peguform	Czech Republic	manufacture of motor vehicles	2002
Rigips, s.r.o.	Horní Počápy	Saint-Gobain	France	chemistry, pharmacy	2008
SYNTHOS PBR s.r.o.	Mělník	Synthos S.A.	Poland	chemistry, pharmacy	2008
ŠKODA AUTO a.s.	Mladá Boleslav	VOLKSWAGEN	Germany	manufacture of motor vehicles	1998
ŠKODA AUTO a.s.	Mladá Boleslav	VOLKSWAGEN	Germany	manufacture of motor vehicles	2004
Toyota Peugeot Citroën Automobile Czech, s.r.o.	Kolín	Toyota/PSA	Japan/France	manufacture of motor vehicles	2002
VALEO AUTOKLIMATIZACE s.r.o.	Rakovník	VALEO SYSTEMES THERMIQUES	France	manufacture of motor vehicles	2001
VDO Česká Republika, s.r.o.	Brandýs nad Labem	Siemens VDO Automotive	Germany	manufacture of motor vehicles	2002

Source: CzechInvest

LIST OF UNIVERSITIES 2009

Name of school	WWW	Orientation	Titles awarded	Students
Academia Rerum civilium	www.vpsv.cz	Politics	Bc.	433
CMC Graduate School of Business	www.cmc.cz	Variety of programmes	MBA	
Škoda Auto - Vysoká škola	www.savs.cz	Automotive industry, economics	Bc., Mgr.	800
Středočeský vysokoškolský institut	www.svikladno.cz	Marketing, economics and management	Bc.	506

Source: Institute for Information on Education

CBRE
CB RICHARD ELLIS
224 814 060
www.cbre.cz

INDUSTRIAL PARKS IN THE CZECH REPUBLIC

Project	Region	City/ Town	Total Area (warehouse + office)	Year of Completion
CTPark Divišov	Central Bohemia	Divisov	35 200	2005
VGP Park Mladá Boleslav	Central Bohemia	Nepřevázka	14 980	2009
Tuchomerice Warehouse	Central Bohemia	Tuchomerice	5 200	2006

Source: CB Richard Ellis

CBRE
CB RICHARD ELLIS
224 814 060
www.cbre.cz

RENTS IN INDUSTRIAL PREMISES IN CR REGIONS (EUR/sqm/month)

Central Bohemia Region	3.0-4.0
Note 1: Net effective rents for units ca 4,000 sq m which is average deal size in the market	
Note 2: Premises are immediately available only some regions.	

Source: CB Richard Ellis

CBRE
CB RICHARD ELLIS
224 814 060
www.cbre.cz

PRIME RENTS IN SHOPPING CENTRES (EUR/sqm/month)

Central Bohemia Region	20-30
Note: for units ca 100 sqm.	

Source: CB Richard Ellis

EMOTION ●

● FUNCTION

● INVENTION

K4

BRNO
PRAHA

—] □ □

www.k4.cz

ARCHITECTS & ENGINEERS

SELECTED INDUSTRIAL ZONES IN THE CENTRAL BOHEMIA REGION	
Industrial zone	Area (ha)
Kladno - Dřín	39,55
Kladno JIH	40,50
Kolín - Ovčáry	370,00
Kozomin - Úžice	156,00
Kutná Hora - Na Rovinách	129,00
Kutná Hora - Na Rovinách	46,00
Mladá Boleslav - Bezděčín	10,01
Mníšek pod Brdy	15,00
Mstětice	13,00
Nybmurk - Průmyslová zóna Sever	120,00
Obchodní a průmyslová zóna Třebestovice - Poříčany, II. a III. etapa	23,60
Průmyslová zóna Jih - Zruč nad Sázavou	14,80
Průmyslová zóna Sever - oblast I. ve Slaném	14,22
Průmyslový areál v k.ú. Kněžívka	14,50
Příbram - Suchodol	68,06
Tuchlovice technologický park a průmyslová zóna	10,50
Unhošť	17,00
Zdice	33,38
Zlatníky - Hodkovice 1.etapa	13,80
Žebrák	120,00

Source: CzechInvest

IMPORTANT CONTACTS IN THE REGION

Regional Council

Zborovská 81/11, 15021 Praha 5
tel.: 257 280 111, 257 280 333, 257 280 334
fax: 257 280 203
Email: info@stredocech.cz
URL: www.kr-stredocesky.cz

CzechInvest

Regional Office Štěpánská 15, 120 00 Praha 2
tel.: 296 342 553
fax: 296 342 651
Email: praha@czechinvest.org
Contact persons: Šárka Špoutilová, Blanka Miksová

Regional Development Agency

nám. Sítná č.p. 3105, 272 01 Kladno
tel./fax: 312 681 347
Email: svitek@rra-strednicechy.cz
URL: www.rra-strednicechy.cz

Regional Consulting & Information Center

- APIS Nybmurk, spol. s r.o.
Topolová 4008, 288 02 Nybmurk
tel.: 325 623 021
fax: 325 623 029
Email: info@apis-nb.cz
URL: www.apis-nb.cz

Regional Consulting & Information Center - FINVEST Příbram s.r.o.

nám. T. G. Masaryka 1, P.O.Box 111, 261 81 Příbram 1
tel.: 318 628 777
fax: 318 629 884
Email: info@finvest.cz
URL: www.finvest.cz

Regional Consulting & Information Center - Sigmin, a.s.

Karlovo nám. 76, 280 00 Kolín
tel.: 321 715 036, 724 241 723
Email: info@sigmin.cz
URL: www.sigmin.cz

CzechTrade - Regional Information Place

Dittrichova 21, 128 01 Praha 2
tel.: 224 907 558, 224 907 526, 224 907 598
fax: 224 913 800
contact person: Ing. Ludmila Brodová

Regional Economic Chamber

Freyova 27, 190 00 Praha 9
tel.: 296 646 206, fax: 296 646 165
KHKSTC@komora.cz, www.khkstrednicechy.cz
contact person: Mgr.Luděk Černý

UTILITIES

GAS

Středočeská plynárenská, a.s.
Novodvorská 803/82, 142 01 Praha 4
tel.: 261 153 150
fax: 261 153 109
Email: info@rwe-stpnet.cz
URL: www.rwe-stpnet.cz

ELECTRICITY

Středočeská energetická, a.s.
Vinohradská 325/8, 120 21 Praha 2
tel.: 211 021 111
fax: 211 022 555
Email: inbox@ste.cz
URL: ste.trade.cz/

ECK Generating, s.r.o

Dubská 257, 272 03 Kladno
tel.: 312 644 853
fax: 312 644 850
Email: eckg@eckg.cz
URL: www.eckg.cz

WATER AND SEWER SYSTEM

Vodárny Kladno-Mělník, a.s.
U Vodojemu 3085, 272 80 Kladno
tel.: 312 812 200
fax: 312 812 183
Email: sekretariat@vkm.cz
URL: www.vkm.cz

Vodovody a kanalizace Mladá Boleslav, a.s.

Čechova 1151, 293 22 Mladá Boleslav
tel.: 326 376 111
fax: 326 721 502
Email: obchodni@vakmb.cz
URL: www.vakmb.cz

Vodovody a kanalizace Nybmurk

Bobnická 712, 288 21 Nybmurk
tel.: 325 513 243-5
fax: 325 513 382
Email: info@vak-nybmurk.cz
URL: www.vak-nybmurk.cz

HEAT

Centrotherm Mladá Boleslav, a.s.
Jana Palacha 1294, 293 01 Mladá Boleslav
tel.: 326 326 747
fax: 326 326 636
E-mail: centrothermm@volny.cz

ECK Generating, s.r.o

Dubská 257, 272 03 Kladno
tel.: 312 644 853
fax: 312 644 850
Email: eckg@eckg.cz
URL: www.eckg.cz

Městská teplená Sedičany, s.r.o.

Církvická 58, 264 01 Sedičany
tel.: 318 821 627
Email: calta.mts@sedlany.cz

Městské tepelné hospodářství Kolín spol. s r.o.

Klenovecká 597, 280 02 Kolín
tel.: 321 724 229
fax: 321 717 126
Email: mth@mth-kolin.cz
URL: www.mth-kolin.cz

Tepelné hospodářství Kladno s.r.o.

Petra Bezruč 1556, 272 01 Kladno
tel.: 312 243 530
Email: tepelne.hospodarstvi@ites.info

Teplárenská a realitní společnost Dobříš

Petrovičova 86, 263 01 Dobříš
tel.: 318 521 033
Email: info@tear.cz
URL: www.tear.cz

Teplárna Týnec, s.r.o.

K Náklí 523, 257 41 Týnec nad Sázavou
tel.: 317 704 763

DISTRICT BENEŠOV



BASIC DATA

Land Area	1,523 km ²
-----------	-----------------------

TOWNS WITH POPULATION OVER 5,000

Benešov	16,375
Vlašim	12,061
Týnec nad Sázavou	5,410

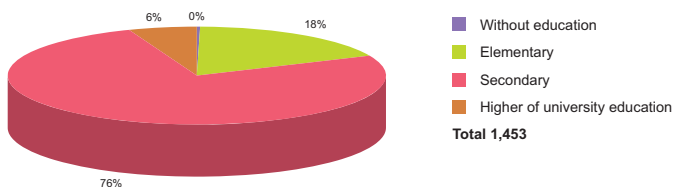
Source: Czech Statistical Office

ACTUAL SITUATION ON LABOUR MARKET

Population	93,392
Percentage in the total population of Czech Republic (%)	7.6
Population density (person/km ²)	61.3
Workforce	49,880
Number of job seekers	1,958
Unemployment rate (%)	3.8

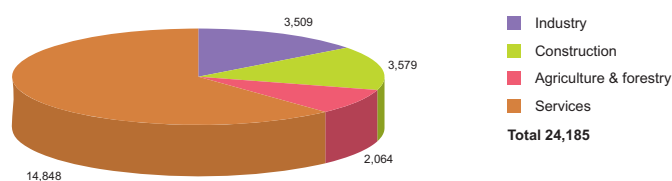
Source: Czech Statistical Office, Ministry of Labour and Social Affairs

NUMBER OF JOB SEEKERS ACCORDING TO EDUCATION



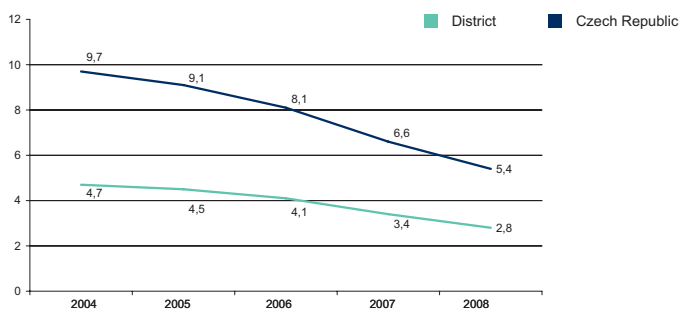
Source: Ministry of Labour and Social Affairs

NUMBER OF ECONOMIC UNITS ACCORDING TO PREVAILING ACTIVITY



Source: Czech Statistical Office

UNEMPLOYMENT - 5 YEAR TREND (%/YEAR)



Source: Czech Statistical Office

FOREIGN DIRECT INVESTMENT

	FDI (CZK)	FDI (EUR)
Benešov	1 539 906	57 848
CR (total)	2 032 111 185	76 337 761
Prague	1 049 062 899	39 408 824
Central Bohemia Average	19 274 074	724 045

Source: Czech National Bank

IMPORTANT COMPANIES IN THE DISTRICT ACCORDING TO TURNOVER

Name of company	Location	Employees	Activity (Sector)	Turnover	www
Alpla, s.r.o.	Bystřice - Petrovice	100 - 199	Manufacture of plastic packing goods	1 905	www.alpla.com
Sellier & Bellot, a.s.	Vlašim	n/a	Manufacture of weapons and ammunition	1 618	www.sellier-bellot.cz
Mlékářské hospodářské družstvo Střední	Benešov	1 - 5	Wholesale of dairy produce, eggs and edible oils and fats	1 520	
Twin Trans, s.r.o.	Vlašim	6 - 9	Wholesale of solid, liquid and gaseous fuels and related products	1500 mil. and more	www.twintrans.cz
TRW Autoelektronika, s.r.o.	Benešov	500 - 999	Manufacture of parts and accessories for motor vehicles and their engines	1500 mil. and more	www.trwauto.cz
Rabbit Trhový Štěpánov, a.s.	Trhový Štěpánov	500 - 999	Production and preserving of poultrymeat	1500 mil. and more	www.rabbitts.cz
Mars ČR, kom. spol.	Poříčí nad Sázavou	500 - 999	Manufacture of cocoa; chocolate and sugar confectionery	3 445	www.mars.com
Ing. Roman Holků	Benešov	6 - 9	Activities auxiliary to insurance and pension funding	1500 mil. and more	
Baest, a.s.	Benešov	200 - 249	Manufacture of metal structures and parts of structures	1 075	www.baest.cz
Sklárny Kavalier, a.s.	Sázava	1500 - 1999	Manufacture and processing of other glass, including technical glassware	1000 - 1499 mil.	www.kavalier.cz
Alima značková potravina, a.s.	Praha 4 - Podolí	500 - 999	Other retail sale in specialized stores	974	www.alima.cz
Zlatá Vejce, a.s.	Benešov	1 - 5	Retail trade, except of motor vehicles and motorcycles	500 - 999 mil.	www.zlatavejce.cz
Sakra, s.r.o.	Benešov	n/a	Other wholesale	500 - 999 mil.	
Mydlářka, a.s.	Benešov	200 - 249	Farming of swine	500 - 999 mil.	www.mydlarka.cz
Jasa trans, s.r.o.	Benešov	n/a	Retail sale of automotive fuel	500 - 999 mil.	
Jasa, s.r.o.	Benešov	n/a	Freight transport by road	469	www.jasatransport.cz
Niersberger Instalace, s.r.o.	Benešov	25 - 49	Plumbing	424	
Mavel, a.s.	Benešov	50 - 99	Architectural and engineering services (incl. design)	354	www.mavel.cz
Rabbit Chotýšany, a.s.	Chotýšany	25 - 49	Other retail sale in specialized stores	300 - 499 mil.	
METAZ, a.s.	Týnec nad Sázavou	250 - 499	Casting of light metals	300 - 499 mil.	www.metaz.cz

DISTRICT BEROUN



BASIC DATA	
Land Area	662 km ²

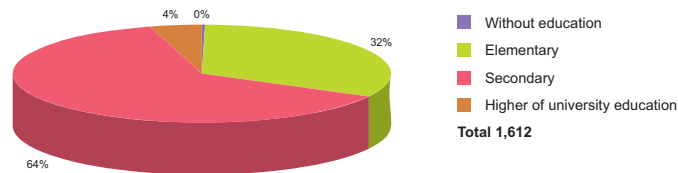
TOWNS WITH POPULATION OVER 5,000	
Beroun	18,352
Hořovice	6,695
Králův Dvůr	6,425

Source: Czech Statistical Office

ACTUAL SITUATION ON LABOUR MARKET	
Population	82,842
Percentage in the total population of Czech Republic (%)	6.7
Population density (person/km ²)	125.1
Workforce	47,123
Number of job seekers	2,442
Unemployment rate (%)	5.0

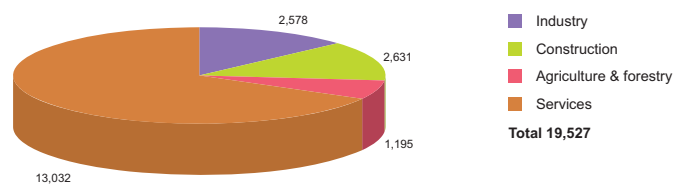
Source: Czech Statistical Office, Ministry of Labour and Social Affairs

NUMBER OF JOB SEEKERS ACCORDING TO EDUCATION



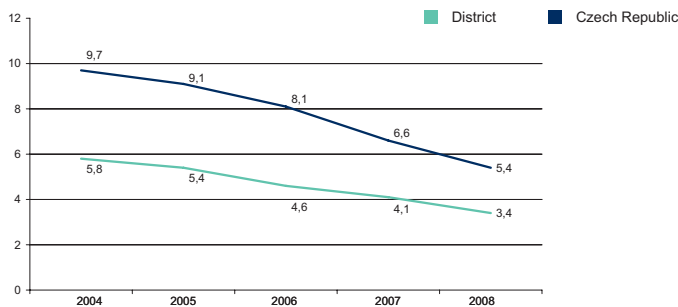
Source: Ministry of Labour and Social Affairs

NUMBER OF ECONOMIC UNITS ACCORDING TO PREVAILING ACTIVITY



Source: Czech Statistical Office

UNEMPLOYMENT - 5 YEAR TREND (%/YEAR)



Source: Czech Statistical Office

FOREIGN DIRECT INVESTMENT

	FDI (CZK)	FDI (EUR)
Beroun	20 898 360	785 062
CR (total)	2 032 111 185	76 337 761
Prague	1 049 062 899	39 408 824
Central Bohemia Average	19 274 074	724 045

Source: Czech National Bank

IMPORTANT COMPANIES IN THE DISTRICT ACCORDING TO TURNOVER

Name of company	Location	Employees	Activity (Sector)	Turnover	www
Kostal CR, s.r.o.	Zdice - Černín	1500 - 1999	Manufacture of electrical equipment for engines and vehicles n.e.c.	6 474	www.kostal.cz
Valeo Výměníky Tepla, k.s.	Žebrák	250 - 499	Manufacture of parts and accessories for motor vehicles and their engines	3 978	www.valeozebrak.cz
Smurfit Kappa Czech, s.r.o.	Žebrák	500 - 999	Manufacture of corrugated paper and paperboard and	2 529	www.smurfitkappa.cz
Cembrit a.s.	Beroun - Závodí	250 - 499	Manufacture of fibre cement	1 892	www.cembrit.cz
Saint - Gobain Sekurit ČR, s.r.o.	Hořovice	500 - 999	Shaping and processing of flat glass	1 719	www.sekurit.com
Schwarz Müller, s.r.o.	Žebrák	100 - 199	Sale of motor vehicles	1 582	www.schwarzmueller.com
Muramoto Manufacturing Europe, s.r.o.	Žebrák	500 - 999	Letting of own property	1500 mil. and more	
Mubea, s.r.o.	Žebrák	250 - 499	Manufacture of parts and accessories for motor vehicles and their engines	1500 mil. and more	www.mubea.com
Carrier Refrigeration Operation	Beroun - Závodí	1000 - 1499	Manufacture of non-domestic cooling and ventilation equipment	1500 mil. and more	www.lindefrigera.cz
Vápenka Čertovy schody, a.s.	Tmaň	100 - 199	Accounting, book-keeping and auditing activities; tax consultancy	1 371	www.lhoist.com
Schwarz Müller Tschechien, s.r.o.	Žebrák	200 - 249	Manufacture of bodies (coachwork) for motor vehicles	1 152	
Mecaplast CZ, s.r.o.	Žebrák	250 - 499	Manufacture of plastic components for productive consumption	1 058	
Tipsport, a.s.	Praha 1 - Nové Město	2000 - 2499	Gambling and betting activities	1000 - 1499 mil.	www.tipsport.cz
PaedDr. Henrieta Mottlová	Beroun - Město	n/a	Adult and other education n.e.c.	1000 - 1499 mil.	
GZ Digital Media, a.s.	Loděnice	500 - 999	Manufacture of prepared unrecorded media	1000 - 1499 mil.	
Buzuluk, a.s.	Komárov	500 - 999	Manufacture of parts and accessories for motor vehicles and their engines	974	www.buzuluk.cz
KWW, a.s.	Králův Dvůr - Karlova Huť	100 - 199	Other wholesale	923	www.kaltwv.cz
HDS Retail Czech Republic, a.s.	Beroun - Město	n/a	Restaurants	891	www.hds.cz
Jednota, spotřební družstvo v Hořovicích	Hořovice	250 - 499	Retail sale in non-specialized stores with food, beverages or tobacco predominating	732	www.sdhorovice.cz
Solitera, s.r.o.	Hořovice	100 - 199	Forestry and logging	697	www.solitera.cz

DISTRICT KLADNO



BASIC DATA

Land Area	691 km ²
-----------	---------------------

TOWNS WITH POPULATION OVER 5,000

Kladno	69,675
Slaný	15,020
Stochov	5,711

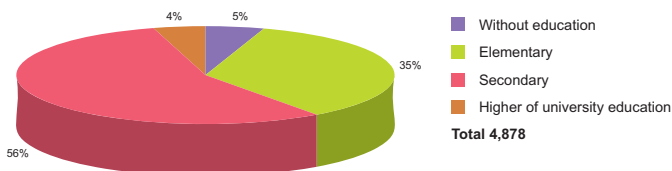
Source: Czech Statistical Office

ACTUAL SITUATION ON LABOUR MARKET

Population	157,243
Percentage in the total population of Czech Republic (%)	12.8
Population density (person/km ²)	227.6
Workforce	86,436
Number of job seekers	6,282
Unemployment rate (%)	7.0

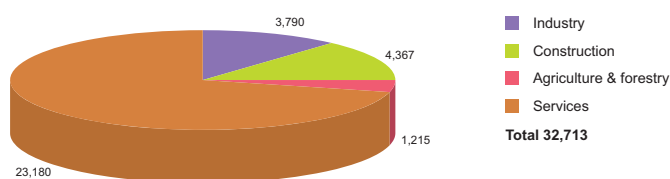
Source: Czech Statistical Office, Ministry of Labour and Social Affairs

NUMBER OF JOB SEEKERS ACCORDING TO EDUCATION



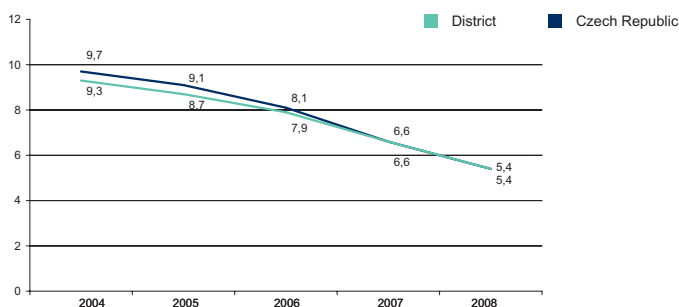
Source: Ministry of Labour and Social Affairs

NUMBER OF ECONOMIC UNITS ACCORDING TO PREVAILING ACTIVITY



Source: Czech Statistical Office

UNEMPLOYMENT - 5 YEAR TREND (%/YEAR)



Source: Czech Statistical Office

FOREIGN DIRECT INVESTMENT

	FDI (CZK)	FDI (EUR)
Kladno	14 362 336	539 532
CR (total)	2 032 111 185	76 337 761
Prague	1 049 062 899	39 408 824
Central Bohemia Average	19 274 074	724 045

Source: Czech National Bank

IMPORTANT COMPANIES IN THE DISTRICT ACCORDING TO TURNOVER

Name of company	Location	Employees	Activity (Sector)	Turnover	www
F.X. Meiller Slaný, s.r.o.	Slaný	500 - 999	Manufacture of parts and accessories for motor vehicles and their engines	4 043	www.meiller.com
ECK Generating, s.r.o.	Kladno - Dubí	25 - 49	Distribution and trade of gaseous fuels through mains	3 873	www.eckg.cz
Lego Production, s.r.o.	Kladno - Kročehlavy	500 - 999	Manufacture of games and toys	3 791	www.lego.com
Electric Powersteering Components	Slaný	100 - 199	Manufacture of electricity distribution and control apparatus	3 521	www.epceurope.cz
Mitsubishi Electric Automotive Czech	Slaný	250 - 499	Manufacture of electrical equipment for engines and vehicles n.e.c.	2 706	www.mitsubishielectric.cz
Linet, s.r.o.	Slaný - Želečnice	250 - 499	Manufacture of medical and surgical equipment and orthopaedic appliances	1 851	www.linet.cz
Interagencie, a.s.	Kladno - Kročehlavy	20 - 24	Wholesale of waste and scrap	1 636	www.interagencie.cz
ESA, s.r.o.	Kladno - Dubí	500 - 999	Activities of other transport agencies	1 534	www.esa.cz
Energie - stavební a báňská, a.s.	Praha 5 - Motol	500 - 999	Construction of pipe lines, communication lines and energy lines	1 520	www.energie-as.cz
Zdravotní pojišťovna Metal - Aliance	Kladno	n/a	Compulsory social security activities	1500 mil. and more	www.zpma.cz
RoBiN OIL, s.r.o.	Kladno - Dubí	50 - 99	Retail sale of automotive fuel	1500 mil. and more	www.robinoil.cz
Poldi Hütte, s.r.o.	Kladno	250 - 499	Treatment and coating of metals	1500 mil. and more	www.poldi.cz
nkt cables, s.r.o.	Kladno	250 - 499	Other wholesale	1500 mil. and more	www.nktcables.cz
Metal Trade Comax, a.s.	Velvary	25 - 49	Treatment and coating of metals	1500 mil. and more	www.metaltrade.cz
Karel Jersák	Kamenné Žehrovice	10 - 19	Freight transport by road	1500 mil. and more	
Česlog, s.r.o.	Kladno	n/a	Cargo handling and storage	1 402	www.ceslog.cz
Bontaz Centre CZ, s.r.o.	Velká Dobrá	500 - 999	Manufacture of parts and accessories for motor vehicles and their engines	1 401	www.bontaz-centre.com
Koska cz, s.r.o.	Unhošť	100 - 199	Wholesale of hardware, plumbing and heating equipment and supplies	1 184	www.koska.cz
Showa Aluminium Czech, s.r.o.	Kladno - Kročehlavy	250 - 499	Manufacture of parts and accessories for motor vehicles and their engines	1000 - 1499 mil.	www.showa.cz
Connectronics, s.r.o.	Kladno - Kročehlavy	200 - 249	Manufacture of electronic valves and tubes and other electronic components	1000 - 1499 mil.	

DISTRICT KOLÍN



BASIC DATA

Land Area	846 km ²
-----------	---------------------

TOWNS WITH POPULATION OVER 5,000

Kolín	30,736
Český Brod	6,735

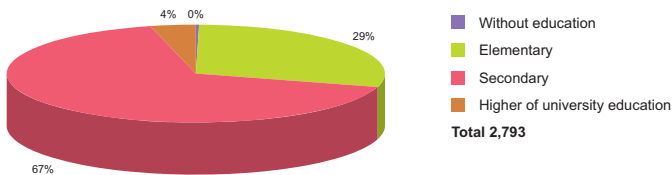
Source: Czech Statistical Office

ACTUAL SITUATION ON LABOUR MARKET

Population	94,293
Percentage in the total population of Czech Republic (%)	7.7
Population density (person/km ²)	111.5
Workforce	51,717
Number of job seekers	3,717
Unemployment rate (%)	7.0

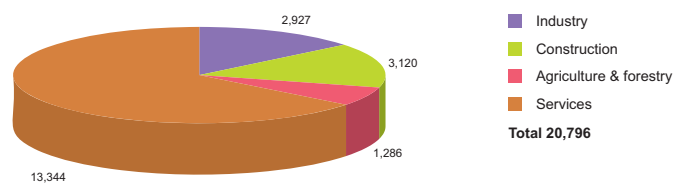
Source: Czech Statistical Office, Ministry of Labour and Social Affairs

NUMBER OF JOB SEEKERS ACCORDING TO EDUCATION



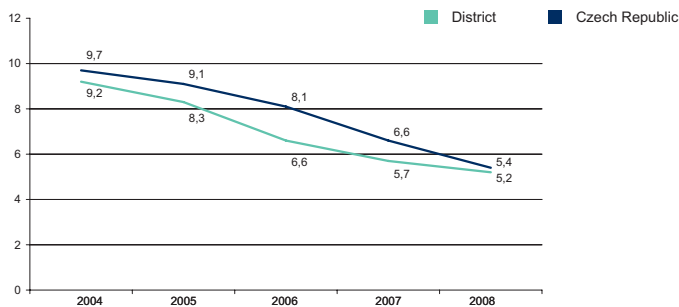
Source: Ministry of Labour and Social Affairs

NUMBER OF ECONOMIC UNITS ACCORDING TO PREVAILING ACTIVITY



Source: Czech Statistical Office

UNEMPLOYMENT - 5 YEAR TREND (%/YEAR)



Source: Czech Statistical Office

FOREIGN DIRECT INVESTMENT

	FDI (CZK)	FDI (EUR)
Kolín	18 253 015	685 688
CR (total)	2 032 111 185	76 337 761
Prague	1 049 062 899	39 408 824
Central Bohemia Average	19 274 074	724 045

Source: Czech National Bank

IMPORTANT COMPANIES IN THE DISTRICT ACCORDING TO TURNOVER

Name of company	Location	Employees	Activity (Sector)	Turnover	www
Toyota Peugeot Citroën Automobile Czech,	Kolín I	1500 - 1999	Manufacture of motor vehicles	54 092	www.tpca-cz.com
ZZN Polabí, a.s.	Kolín V	250 - 499	Manufacture of prepared feeds for farm animals	2 618	www.zznpolabi.cz
Michaela Semeráková	Ratboř	6 - 9	Other wholesale	1500 mil. and more	
Ingersoll - Rand Equipment Manufacturing	Kolín IV	500 - 999	Manufacture of non-domestic cooling and ventilation equipment	1500 mil. and more	www.irco.cz
Geosan Group, a.s.	Kolín III	n/a	General construction of buildings and civil engineering works	1500 mil. and more	www.geosan-group.cz
Kopos Kolín, a.s.	Kolín IV	250 - 499	Manufacture of plastic plates, sheets, tubes and profiles	1 383	www.kopos.cz
EKO Logistics, s.r.o.	Týnec nad Labem	25 - 49	Collection and treatment of other waste	1 210	www.ekologistics.cz
Obchodní tiskárny, akciová společnost	Kolín IV	500 - 999	Printing n.e.c.	1 146	www.otk.cz
Lonza Biotec s.r.o.	Kouřim	n/a	Manufacture of basic pharmaceutical products	1000 - 1499 mil.	
Josef Vlachovský	Kolín II	1 - 5	Plumbing	1000 - 1499 mil.	
Aerocan CZ, s.r.o.	Velim	100 - 199	Manufacture of light metal packaging	1000 - 1499 mil.	www.aerocan.cz
Spel, s.r.o.	Kolín V	250 - 499	Manufacture of insulated wire and cable	854	www.spel.cz
Tona, a.s.	Pečky	100 - 199	Manufacture of tools	676	www.tona.cz
Hügli Food, s.r.o.	Zásmuky	200 - 249	Manufacture of cocoa; chocolate and sugar confectionery	661	www.huegli.cz
Lučební závody Draslovka, a.s. Kolín	Kolín IV	250 - 499	Manufacture of other organic basic chemicals	630	www.draslovka.cz
Alper, a.s.	Přístoupim	100 - 199	Other mining and quarrying n.e.c.	546	www.alper.cz
Kopos - oil, s.r.o.	Kolín IV	6 - 9	Other wholesale	534	www.kopos.cz
Geosan Dopravní Stavby, a.s.	Zásmuky	100 - 199	Freight transport by road	526	www.geosands.cz, www.address.cz/geosands
Transfreight Automotive Logistics	Kolín V	6 - 9	Activities of other transport agencies	500 - 999 mil.	
Thi Nhi Le	Pečky	n/a	Other retail sale in specialized stores	500 - 999 mil.	

DISTRICT KUTNÁ HORA



BASIC DATA	
Land Area	917 km ²

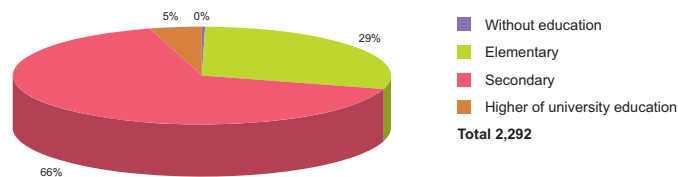
TOWNS WITH POPULATION OVER 5,000	
Kutná Hora	21,444
Čáslav	10,100
Zruč nad Sázavou	5,034

Source: Czech Statistical Office

ACTUAL SITUATION ON LABOUR MARKET	
Population	74,820
Percentage in the total population of Czech Republic (%)	6.1
Population density (person/km ²)	81.6
Workforce	38,351
Number of job seekers	3,160
Unemployment rate (%)	8.1

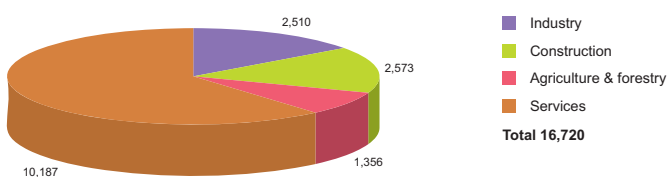
Source: Czech Statistical Office, Ministry of Labour and Social Affairs

NUMBER OF JOB SEEKERS ACCORDING TO EDUCATION



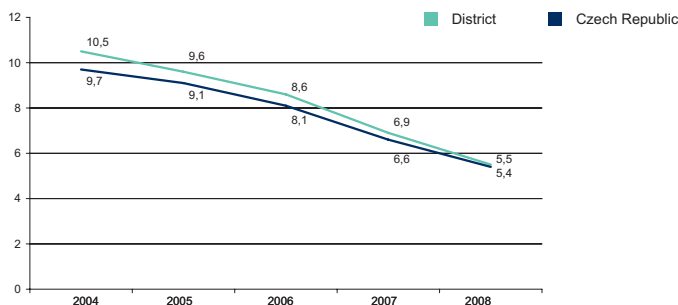
Source: Ministry of Labour and Social Affairs

NUMBER OF ECONOMIC UNITS ACCORDING TO PREVAILING ACTIVITY



Source: Czech Statistical Office

UNEMPLOYMENT - 5 YEAR TREND (%/YEAR)



Source: Czech Statistical Office

FOREIGN DIRECT INVESTMENT

	FDI (CZK)	FDI (EUR)
Kutná Hora	8 292 573	311 517
CR (total)	2 032 111 185	76 337 761
Prague	1 049 062 899	39 408 824
Central Bohemia Average	19 274 074	724 045

Source: Czech National Bank

IMPORTANT COMPANIES IN THE DISTRICT ACCORDING TO TURNOVER

Name of company	Location	Employees	Activity (Sector)	Turnover	www
Less & Forest, s.r.o.	Bohdaneč	250 - 499	Forestry and logging	3 388	www.less.cz/forest
ČKD Kutná Hora, a.s.	Kutná Hora - Karlov	n/a	Casting of steel	2 693	www.ckdkh.cz
Unikom, a.s.	Kutná Hora - Karlov	250 - 499	Farming of swine	1 560	www.unikom.cz
Asmo Czech, s.r.o.	Zruč nad Sázavou	100 - 199	Manufacture of motor vehicles	1 394	www.asmo.cz
Obila, a.s.	Kutná Hora - Karlov	100 - 199	Manufacture of prepared feeds for farm animals	1 267	www.obila.cz
Obden, s.r.o.	Kutná Hora - Karlov	50 - 99	Wholesale of metals and metal ores	1000 - 1499 mil.	
Goldbeck Bau, s.r.o.	Vrdy - Dolní Bučice	10 - 19	Architectural and engineering services (incl. design)	1000 - 1499 mil.	www.goldbeck.cz
Silnice Čáslav - Holding, a.s.	Zbraslavice	250 - 499	Construction of motorways, roads, airfields and sport facilities	601	www.silnicecaslav.cz
Město Kutná Hora	Kutná Hora - Vnitřní Město	200 - 249	General (overall) public service activities	500 - 999 mil.	www.kutnahora.cz
Less & Timber, s.r.o.	Bohdaneč	250 - 499	Forestry and logging related service activities	879	www.less.cz/timber
Goldbeck Prefabeton, s.r.o.	Vrdy - Dolní Bučice	n/a	Manufacture of concrete products for construction purposes	500 - 999 mil.	www.prefabeton.cz
Variel, a. s.	Zruč nad Sázavou	100 - 199	Manufacture of metal structures and parts of structures	478	www.variel.cz
Metalcom Kutná Hora, a.s.	Kutná Hora - Karlov	25 - 49	Wholesale of hardware, plumbing and heating equipment and supplies	417	www.metalcom.cz
Agrone Trading, s.r.o.	Čáslav - Nové Město	6 - 9	Other retail sale in specialized stores	389	
Charvát Group, s.r.o.	Zbraslavice	50 - 99	Wholesale on a fee or contract basis	300 - 499 mil.	
Gastrotabak, s.r.o.	Kutná Hora - Malín	n/a	Wholesale on a fee or contract basis	300 - 499 mil.	
Výkm Kutnohorsko, s.r.o.	Kutná Hora - Karlov	1 - 5	Growing of crops combined with farming of animals (mixed farming)	287	
Drubos, s.r.o.	Kutná Hora - Karlov	1 - 5	Other wholesale	282	
Zenit, s.r.o.	Čáslav - Nové Město	100 - 199	Manufacture of soap and detergents, cleaning and polishing preparations	200 - 299 mil.	www.zenit-caslav.cz
Josef Moravec - Adria	Žehušice	10 - 19	Activities auxiliary to financial intermediation n.e.c.	200 - 299 mil.	

DISTRICT MĚLNÍK



BASIC DATA	
Land Area	712 km ²

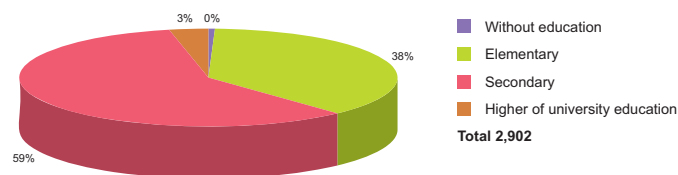
TOWNS WITH POPULATION OVER 5,000	
Mělník	19,012
Kralupy nad Vltavou	17,091
Neratovice	16,296

Source: Czech Statistical Office

ACTUAL SITUATION ON LABOUR MARKET	
Population	99,848
Percentage in the total population of Czech Republic (%)	8.1
Population density (person/km ²)	140.2
Workforce	54,135
Number of job seekers	3,609
Unemployment rate (%)	6.5

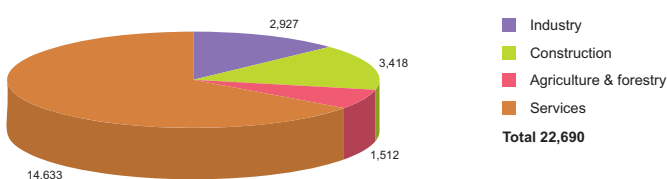
Source: Czech Statistical Office, Ministry of Labour and Social Affairs

NUMBER OF JOB SEEKERS ACCORDING TO EDUCATION



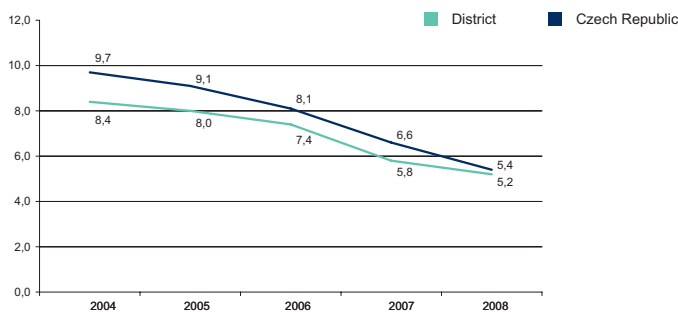
Source: Ministry of Labour and Social Affairs

NUMBER OF ECONOMIC UNITS ACCORDING TO PREVAILING ACTIVITY



Source: Czech Statistical Office

UNEMPLOYMENT - 5 YEAR TREND (%/YEAR)



Source: Czech Statistical Office

FOREIGN DIRECT INVESTMENT

	FDI (CZK)	FDI (EUR)
Mělník	15 246 823	572 758
CR (total)	2 032 111 185	76 337 761
Prague	1 049 062 899	39 408 824
Central Bohemia Average	19 274 074	724 045

Source: Czech National Bank

IMPORTANT COMPANIES IN THE DISTRICT ACCORDING TO TURNOVER

Name of company	Location	Employees	Activity (Sector)	Turnover	www
Vibracoustic CZ, s.r.o.	Mělník	25 - 49	Manufacture of parts and accessories for motor vehicles and their engines	2 594	www.vibracoustic.com
Wavin Ekoplastik, s.r.o.	Kostelec nad Labem	n/a	Retail sale in non-specialized stores	2 546	www.wavin.cz
Vitana, a.s.	Byšice	1000 - 1499	Manufacture of food concentrates and other food	2 335	www.vitana.cz
Valsabbia Praha, s.r.o.	Kralupy nad Vltavou	100 - 199	Manufacture of wire products	2 262	www.valsabbia.cz
Mělnická geodetická, s.r.o.	Mělník	1 - 5	Geodesic and cartographic activities	2 059	www.geodetpb.cz
SPOLANA a.s.	Neratovice	1000 - 1499	Manufacture of plastics in primary forms	1500 mil. and more	www.spolana.cz
Nowaco Czech Republic, s.r.o.	Kralupy nad Vltavou	500 - 999	Manufacture of other food products n.e.c.	1500 mil. and more	www.nowaco.cz
Mero ČR, a.s.	Kralupy nad Vltavou - Lobeč	100 - 199	Transport via oil pipelines	1500 mil. and more	www.mero.cz
Petr Maštalík	Mělník	10 - 19	Building of complete constructions or parts thereof; civil engineering	1000 - 1499 mil.	www.mastalko.cz
Erwin Junker, brousící technika Mělník	Mělník	250 - 499	Manufacture of other metalworking machine tools	1000 - 1499 mil.	www.junker-group.com
Agrobyškovice, s.r.o.	Neratovice - Byškovice	n/a	Wholesale on a fee or contract basis	1000 - 1499 mil.	byskovic.sweb.cz
VITOGAZ ČR, s.r.o.	Praha 9 - Vysočany	50 - 99	Wholesale of solid, liquid and gaseous fuels and related products	917	www.vitogaz.cz
Feralpi - praha, s.r.o.	Kralupy nad Vltavou	50 - 99	Manufacture of wire products	890	www.feralpi.cz
Bohemia Profinvest, s.r.o.	Neratovice - Byškovice	n/a	Wholesale on a fee or contract basis	885	
Thimm Obaly, k.s.	Všetaty	100 - 199	Manufacture of corrugated paper and paperboard and of containers	837	www.thimm.cz
Fytoz, s.r.o.	Mělník	25 - 49	Wholesale of chemical products	784	www.fytoz.cz
Danzer Bohemia - dýhárna, s.r.o.	Horní Počaply - Křivenice	n/a	Manufacture of veneer sheets; manufacture of plywood, laminboard	730	www.danzer.cz
Montako, s.r.o.	Kralupy nad Vltavou	100 - 199	Retail sale in non-specialized stores	616	www.montako.com
Zemědělské zásobování a nákup v Mělníku, Mělník	Mělník	n/a	Manufacture of prepared feeds for farm animals	500 - 999 mil.	www.zznmelnik.cz
Zásobování, a.s.	Mělník	100 - 199	Wholesale of electrical household appliances and radio and television goods	500 - 999 mil.	www.zasobovani.cz

DISTRICT MLADÁ BOLESLAV



BASIC DATA

Land Area	1,058 km ²
-----------	-----------------------

TOWNS WITH POPULATION OVER 5,000

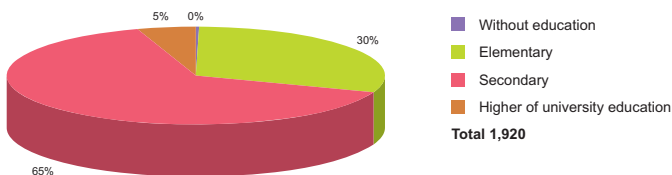
Mladá Boleslav	44,602
Mnichovo Hradiště	8,575
Benátky nad Jizerou	7,157
Bělá pod Bezdězem	5,013

ACTUAL SITUATION ON LABOUR MARKET

Population	123,097
Percentage in the total population of Czech Republic (%)	10.0
Population density (person/km ²)	116.3
Workforce	79,485
Number of job seekers	3,116
Unemployment rate (%)	3.8

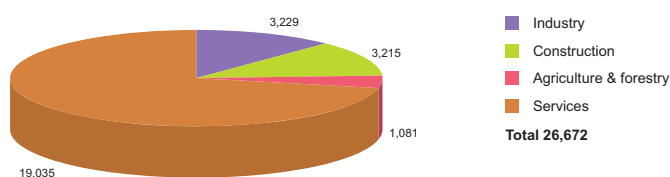
Source: Czech Statistical Office, Ministry of Labour and Social Affairs

NUMBER OF JOB SEEKERS ACCORDING TO EDUCATION



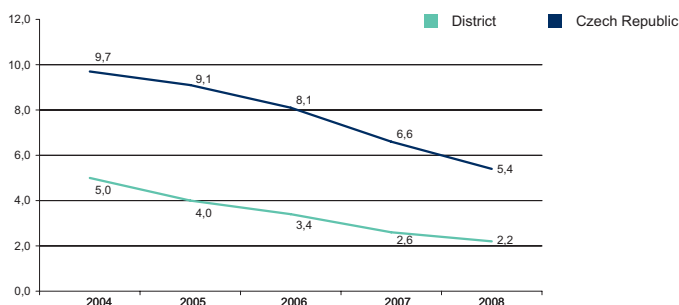
Source: Ministry of Labour and Social Affairs

NUMBER OF ECONOMIC UNITS ACCORDING TO PREVAILING ACTIVITY



Source: Czech Statistical Office

UNEMPLOYMENT - 5 YEAR TREND (%/YEAR)



Source: Czech Statistical Office

FOREIGN DIRECT INVESTMENT

	FDI (CZK)	FDI (EUR)
Mladá Boleslav	96 446 481	3 623 083
CR (total)	2 032 111 185	76 337 761
Prague	1 049 062 899	39 408 824
Central Bohemia Average	19 274 074	724 045

Source: Czech National Bank

IMPORTANT COMPANIES IN THE DISTRICT ACCORDING TO TURNOVER

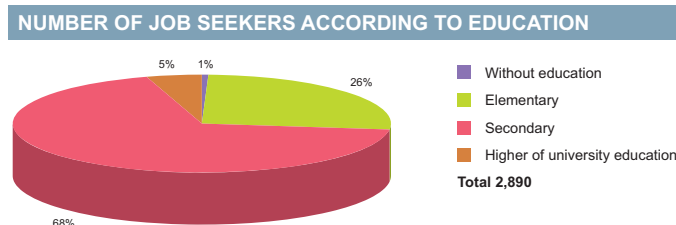
Name of company	Location	Employees	Activity (Sector)	Turnover	www
Škoda Auto, a.s.	Mladá Boleslav II	10 000 - and more	Manufacture of motor vehicles	215 879	www.skoda-auto.cz
Behr Czech, s.r.o.	Mnichovo Hradiště	500 - 999	Manufacture of parts and accessories for motor vehicles and their engines	10 178	www.behrgroup.com
SAS Autosystemtechnik, s.r.o.	Mladá Boleslav II	250 - 499	Manufacture of parts and accessories for motor vehicles and their engines	9 977	www.sas-automotive.com
Faurecia Exhaust Systems, s.r.o.	Bakov nad Jizerou - Horka	500 - 999	Manufacture of parts and accessories for motor vehicles and their engines	8 386	www.faurecia.cz
Cukrovary a lihovary TTD, a.s.	Dobrovice	250 - 499	Manufacture of sugar	4 779	www.cukrovarytttd.cz
Hbpo Czech, s.r.o.	Mnichovo Hradiště	50 - 99	Manufacture of parts and accessories for motor vehicles and their engines	2 269	www.hbpgroup.com
Ško - energo, s.r.o.	Mladá Boleslav II	200 - 249	Production of electricity	1 945	www.sko-energo.cz
Kautex Textron Bohemia, s.r.o.	Kněžmost 2	250 - 499	Manufacture of plastic packing goods	1 656	www.kautex.com
TRW - Carr, s.r.o.	Mladá Boleslav - Řepov	1000 - 1499	Manufacture of parts and accessories for motor vehicles and their engines	1500 mil. and more	www.trwauto.cz
Faurecia Interior Systems Bohemia, s.r.o.	Plazy	500 - 999	Manufacture of plastic products	1500 mil. and more	www.faurecia.com
Akuma, a.s.	Mladá Boleslav III	250 - 499	Manufacture of accumulators, primary cells and primary batteries	1500 mil. and more	www.akuma.cz
Zena - zemědělský nákup, a.s.	Mladá Boleslav II	100 - 199	Wholesale of grain, seeds and animal feeds	1 432	www.zena-mb.cz
Dehtochema Bitumat, s.r.o.	Bělá pod Bezdězem	100 - 199	Manufacture of articles of concrete, plaster and cement	1 357	
Schnellecke Bohemia, s.r.o.	Dobrovice	50 - 99	Manufacture of parts and accessories for motor vehicles and their engines	1 332	www.schnellecke.cz
EMCON Technologies Czech Republic, s.r.o.	Mladá Boleslav	n/a	Manufacture of parts and accessories for motor vehicles and their engines	1 148	www.arvinmeritor.com
Wagon Automotive, s.r.o.	Bělá pod Bezdězem	250 - 499	Manufacture of parts and accessories for motor vehicles and their engines	1000 - 1499 mil.	www.wagonautomotive.com
Würth, s.r.o.	Nepřevážka	250 - 499	Wholesale of hardware, plumbing and heating equipment and supplies	933	www.wuerth.cz
Hato, s.r.o.	Dobrovice	20 - 24	Wholesale of metals and metal ores	903	www.hato.cz
Jaroslav Cankar a syn Atmos	Bělá pod Bezdězem	n/a	Manufacture of central heating radiators and boilers	745	www.atmos.cz
Advanced Accessory Systems s.r.o.	Bakov nad Jizerou	100 - 199	Manufacture of parts and accessories for motor vehicles and their engines	689	

DISTRICT NYMBURK

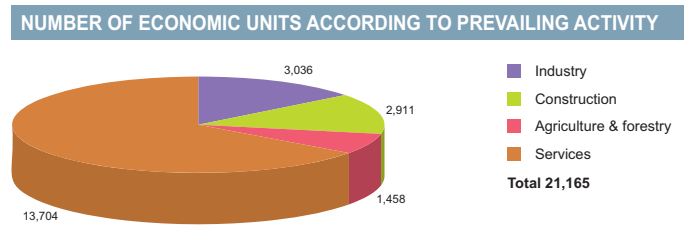


BASIC DATA	
Land Area	876 km ²
TOWNS WITH POPULATION OVER 5,000	
Nymburk	14,473
Poděbrady	13,495
Lysá nad Labem	8,471
Milovice	8,106
ACTUAL SITUATION ON LABOUR MARKET	
Population	90,157
Percentage in the total population of Czech Republic (%)	7.3
Population density (person/km ²)	102.9
Workforce	46,763
Number of job seekers	3,787
Unemployment rate (%)	7.9

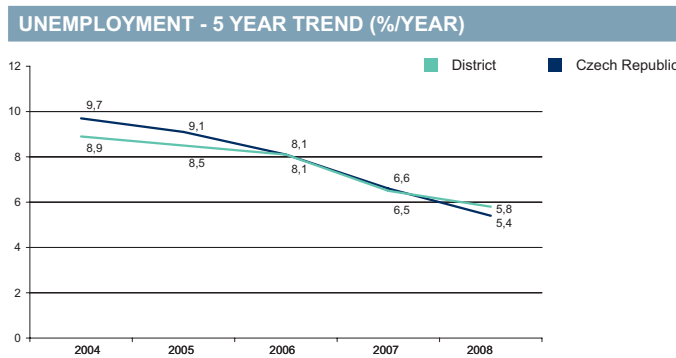
Source: Czech Statistical Office, Ministry of Labour and Social Affairs



Source: Ministry of Labour and Social Affairs



Source: Czech Statistical Office



Source: Czech Statistical Office

FOREIGN DIRECT INVESTMENT

	FDI (CZK)	FDI (EUR)
Nymburk	1 500 897	56 382
CR (total)	2 032 111 185	76 337 761
Prague	1 049 062 899	39 408 824
Central Bohemia Average	19 274 074	724 045

Source: Czech National Bank

IMPORTANT COMPANIES IN THE DISTRICT ACCORDING TO TURNOVER

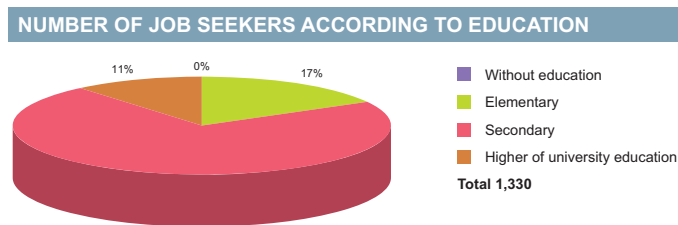
Name of company	Location	Employees	Activity (Sector)	Turnover	www
Linde + Wiemann CZ, s.r.o.	Lysá nad Labem	250 - 499	Manufacture of parts and accessories for motor vehicles and their engines	1 905	www.linde-wiemann.com
Josef Kolman	Lysá nad Labem	n/a	Other land transport	1500 mil. and more	
Alena Pactlová	Bobnice	n/a	Other wholesale	1500 mil. and more	
Jednota, spotřební družstvo v Nymburce	Nymburk	250 - 499	Non-specialized wholesale of food, beverages and tobacco	1 143	www.okres-nymburk.cz
Poděbradka, a.s.	Poděbrady - Velké Zboží	100 - 199	Production of mineral waters and soft drinks	1 010	www.podebradka.cz
Polabské Mlékárny, a.s.	Poděbrady II	100 - 199	Operation of dairies and cheese making	991	www.polabske.cz
CZ LOKO, a. s.	Nymburk	100 - 199	Agents involved in the sale of machinery, industrial equipment, ships and aircraft	897	www.cmks.cz
Fresenius HemoCare CZ, s.r.o., koncern	Hořátek	250 - 499	Manufacture of medical and surgical equipment and orthopaedic appliances	752	www.fresenius-kabi.com
Fertistav CZ, a.s.	Městec Králové	25 - 49	Wholesale of chemical products	733	www.fertistav.cz
Proagro Nymburk, a.s.	Nymburk	200 - 249	Farming of poultry	708	
Družstvo Bramko CZ	Semice	50 - 99	Other wholesale	607	
Dywidag Prefa, a.s.	Lysá nad Labem	100 - 199	Manufacture of concrete products for construction purposes	518	www.dywidag.cz
Parker - Hannifin, s.r.o.	Sadská	250 - 499	Manufacture of other rubber products	500 - 999 mil.	www.parker.com
Autosalon Louda, s.r.o.	Choťánky	50 - 99	Other retail sale in specialized stores	500 - 999 mil.	www.louda.cz
Maschinenfabrik Niehoff (CZ) , s.r.o.	Nymburk	50 - 99	Letting of own property	391	www.niehoff.cz
Bürger Transport, s.r.o.	Libice nad Cidlinou	25 - 49	Freight transport by road	387	www.burger-transport.cz
Temac, a.s.	Zvěřínec	200 - 249	Manufacture of other non-metallic mineral products n.e.c.	384	www.temac.cz
PMS, s.r.o.	Poděbrady III	50 - 99	Construction of other buildings	373	www.pmspodebrady.cz
Výrolat, s.r.o.	Nymburk	50 - 99	Retail sale in non-specialized stores	368	
Agrobet CZ, s.r.o.	Poděbrady II	1 - 5	Wholesale of agricultural raw materials and live animals	332	www.agrobet.cz

DISTRICT PRAGUE-EAST

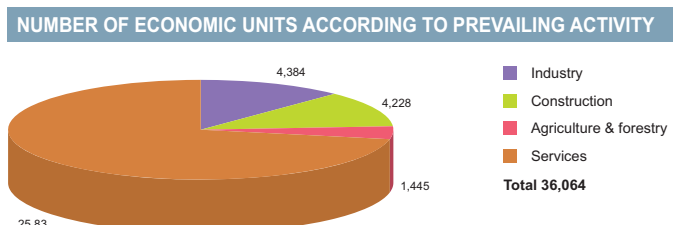


BASIC DATA	
Land Area	584 km ²
TOWNS WITH POPULATION OVER 5,000	
Brandýs nad Labem/Stará Boleslav	16,214
Říčany	12,388
Čelákovice	10,974
Úvaly	5,313
Odolena Voda	5,262
ACTUAL SITUATION ON LABOUR MARKET	
Population	134,955
Percentage in the total population of Czech Republic (%)	11.0
Population density (person/km ²)	231.1
Workforce	79,774
Number of job seekers	1,996
Unemployment rate (%)	2.4

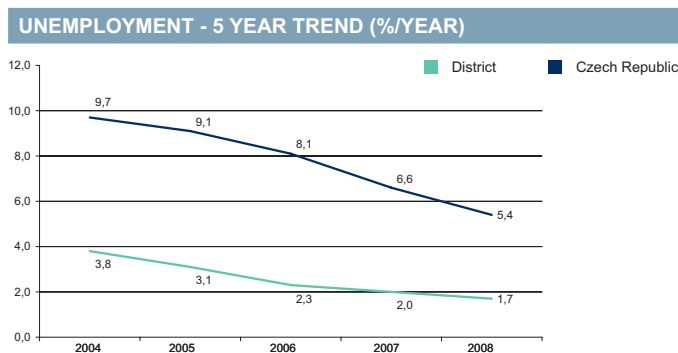
Source: Czech Statistical Office, Ministry of Labour and Social Affairs



Source: Ministry of Labour and Social Affairs



Source: Czech Statistical Office



Source: Czech Statistical Office

FOREIGN DIRECT INVESTMENT

	FDI (CZK)	FDI (EUR)
Prague-east	34 078 435	1 280 182
CR (total)	2 032 111 185	76 337 761
Prague	1 049 062 899	39 408 824
Central Bohemia Average	19 274 074	724 045

Source: Czech National Bank

IMPORTANT COMPANIES IN THE DISTRICT ACCORDING TO TURNOVER

Name of company	Location	Employees	Activity (Sector)	Turnover	www
Penny Market, s.r.o.	Jirny	3000 - 3999	Retail sale in non-specialized stores with food, beverages or tobacco predominating	17 663	www.penny.cz
Billa, s.r.o.	Modletice	2500 - 2999	Retail sale in non-specialized stores with food, beverages or tobacco predominating	8 830	www.billa.cz
Aero Vodochody, a.s.	Odolena Voda	2000 - 2499	Manufacture of aircraft and spacecraft	6 425	www.aero.cz
Fast ČR, a.s.	Říčany	250 - 499	Other retail sale of new goods in specialized stores	3 976	www.fastcr.cz
Mountfield, a.s.	Mnichovice	n/a	Retail sale of hardware, paints and glass	3 574	www.mountfield.cz
Volvo Truck Czech, s.r.o.	Čestlice	100 - 199	Sale of motor vehicles	3 352	www.volvotrucks.volvo.cz
KOVOHUTĚ HOLDING DT, a.s.	Čelákovice	250 - 499	Copper production	3 266	www.khc.cz
Bosal ČR, s.r.o.	Brandýs nad Labem	250 - 499	Manufacture of parts and accessories for motor vehicles and their engines	2 815	www.bosal.com
KIA Motors Czech, s.r.o.	Čestlice	25 - 49	Sale of motor vehicles	2 484	www.kiamotors.cz
Kenvelo Czech Republic, s.r.o.	Čestlice	500 - 999	Other retail sale in specialized stores	2 410	
Hoffmann a Žižák, s.r.o.	Zápy	100 - 199	Sale of motor vehicles	1 958	www.hoffmann-zizak.cz
K + B Progres, a.s.	Kličany	25 - 49	Wholesale of electrical household appliances and radio and television goods	1 951	www.kbexpert.cz
Rehau, s.r.o.	Čestlice	250 - 499	Wholesale of chemical products	1 810	www.rehau.cz
Ústav jaderného výzkumu Řež, a.s.	Husinec - Řež	1000 - 1499	Research and experimental development on natural sciences and engineering	1 775	www.ujv.cz, www.nri.cz/cz
XAVERgen, a.s.	Říčany	500 - 999	Farming of poultry	1 746	www.xavergen.cz
EWT, s.r.o.	Zápy	20 - 24	Sale of motor vehicles	1 582	www.ewt.cz
Asbis CZ, s.r.o.	Čestlice	50 - 99	Wholesale of computers, computer peripheral equipment and software	1 550	www.asbis.cz
Profi Auto CZ, a.s.	Říčany	50 - 99	Sale of motor vehicles	1500 mil. and more	www.profiautocz.cz
Plus - Discount, s.r.o.	Radonice	2000 - 2499	Retail sale in non-specialized stores with food, beverages	1500 mil. and more	
Phoenix - Zeppelin, s.r.o.	Modletice	250 - 499	Wholesale of mining, construction and civil engineering machinery	1500 mil. and more	www.p-z.cz

Source: Albertina Company Monitor

DISTRICT PARGUE-WEST

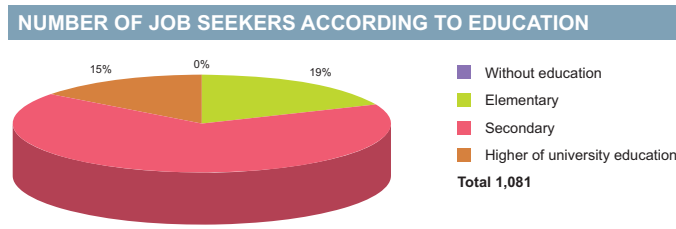


BASIC DATA	
Land Area	586 km ²

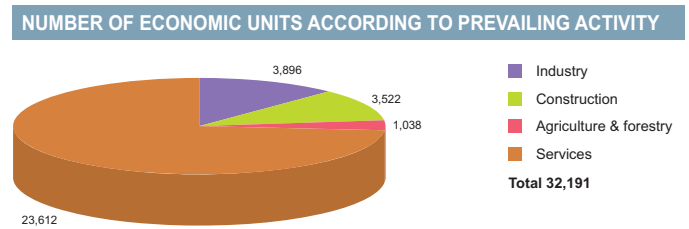
TOWNS WITH POPULATION OVER 5,000	
Roztoky	7,050
Hostivice	6,752
Černošice	5,788
Jesenice	5,289

ACTUAL SITUATION ON LABOUR MARKET	
Population	111,905
Percentage in the total population of Czech Republic (%)	9.1
Population density (person/km ²)	191.0
Workforce	58,207
Number of job seekers	1,621
Unemployment rate (%)	2.7

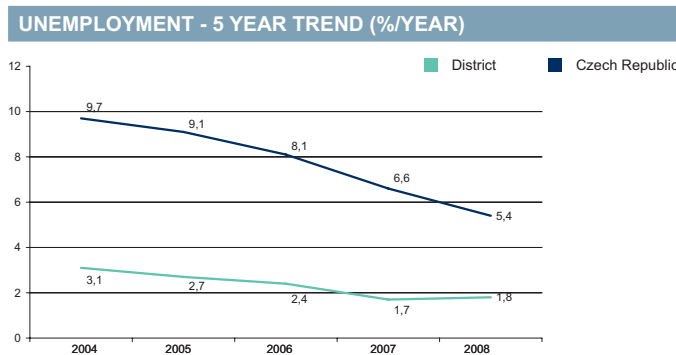
Source: Czech Statistical Office, Ministry of Labour and Social Affairs



Source: Ministry of Labour and Social Affairs



Source: Czech Statistical Office



Source: Czech Statistical Office

FOREIGN DIRECT INVESTMENT		
	FDI (CZK)	FDI (EUR)
Prague-west	11 430 427	429 392
CR (total)	2 032 111 185	76 337 761
Prague	1 049 062 899	39 408 824
Central Bohemia Average	19 274 074	724 045

Source: Czech National Bank

IMPORTANT COMPANIES IN THE DISTRICT ACCORDING TO TURNOVER						
Name of company	Location	Employees	Activity (Sector)	Turnover	www	
AAA Auto, a.s.	Hostivice	1000 - 1499	Sale of motor vehicles	7 539	www.aaaauto.cz	
Raab Karcher Slaviva, a.s.	Rudná	500 - 999	Wholesale of wood, construction materials and sanitary equipment	3 881	www.rkstaviva.cz	
Scania Finance Czech Republic, s.r.o.	Chrástany	10 - 19	Financial leasing	3 507	www.scania.com	
Maurice Ward & Co., s.r.o.	Kněževs	n/a	Other wholesale	1 930	www.mauriceward.cz	
Popilka, s.r.o.	Bratřínov - Hvozdnice	100 - 199	Freight transport by road	1 883	www.popilka.cz	
Charter AIR, s.r.o. v likvidaci	Tuchoměřice	n/a	Advertising	1 516		
Schenker, s.r.o.	Rudná	250 - 499	Activities of other transport agencies	1500 mil. and more	www.schenker.cz	
Show production, s.r.o.	Hostivice	n/a	Advertising	1500 mil. and more	www.actionpromo.cz	
SCANIA CZECH REPUBLIC s.r.o.	Chrástany	250 - 499	Sale of motor vehicles	1500 mil. and more	www.scania.cz	
Safina, a.s.	Vestec	250 - 499	Precious metals production	1500 mil. and more	www.safina.cz	
North GAS, s.r.o.	Jeneč	n/a	Wholesale of solid, liquid and gaseous fuels and related products	1500 mil. and more		
Gebrüder Weiss, s.r.o.	Rudná	250 - 499	Freight transport by road	1 405	www.weisslogistics.cz	
Office Depot, s.r.o.	Hostivice	250 - 499	Retail sale of books, newspapers and stationery	1 378	www.officedepot.cz, www.papirius.net/cz, www.papirius.cz	
Hesti - truck, s.r.o.	Zbuzany	1 - 5	Sale of motor vehicles	1 375	www.hesti.cz	
Peri, s.r.o.	Jesenice	50 - 99	Renting of construction and civil engineering machinery and equipment	1 355	www.peri.cz	
DSV Road a.s.	Rudná	100 - 199	Activities of other transport agencies	1 085	www.dsv.com/cz	
Hesti - Trailer, s.r.o.	Zbuzany	10 - 19	Sale of motor vehicles	1 067	www.hesti.cz	
Rhenus Freight Logistics, s.r.o.	Nučice	50 - 99	Courier activities other than national post activities	1 049	www.ihg-logistics.cz	
Mucos Pharma CZ, s.r.o.	Průhonice	25 - 49	Wholesale of pharmaceutical goods	1 026	www.mucos.cz	
Volvo Auto Czech, s.r.o.	Průhonice	25 - 49	Sale of motor vehicles	1000 - 1499 mil.	www.volvocars.com	

DISTRICT PŘÍBRAM



BASIC DATA

Land Area	1,628 km ²
-----------	-----------------------

TOWNS WITH POPULATION OVER 5,000

Příbram	34,591
Dobříš	8,131
Sedčany	7,713

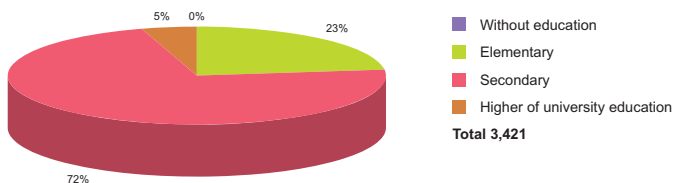
Source: Czech Statistical Office

ACTUAL SITUATION ON LABOUR MARKET

Population	111,650
Percentage in the total population of Czech Republic (%)	9.1
Population density (person/km ²)	68.6
Workforce	60,289
Number of job seekers	4,742
Unemployment rate (%)	7.7

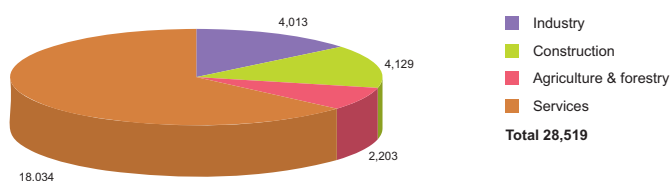
Source: Czech Statistical Office, Ministry of Labour and Social Affairs

NUMBER OF JOB SEEKERS ACCORDING TO EDUCATION



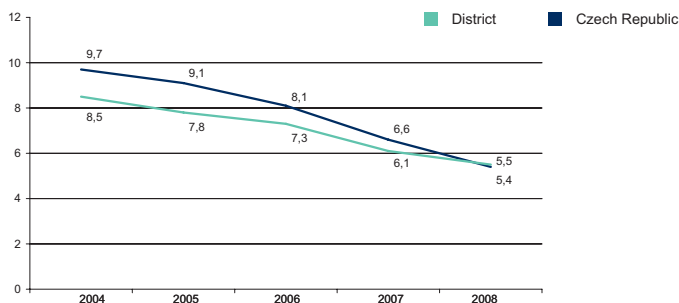
Source: Ministry of Labour and Social Affairs

NUMBER OF ECONOMIC UNITS ACCORDING TO PREVAILING ACTIVITY



Source: Czech Statistical Office

UNEMPLOYMENT - 5 YEAR TREND (%/YEAR)



Source: Czech Statistical Office

FOREIGN DIRECT INVESTMENT

	FDI (CZK)	FDI (EUR)
Příbram	5 274 177	198 128
CR (total)	2 032 111 185	76 337 761
Prague	1 049 062 899	39 408 824
Central Bohemia Average	19 274 074	724 045

Source: Czech National Bank

IMPORTANT COMPANIES IN THE DISTRICT ACCORDING TO TURNOVER

Name of company	Location	Employees	Activity (Sector)	Turnover	www
Kovohutě Příbram nástupnická, a.s.	Příbram VI - Březové Hory	200 - 249	Lead, zinc and tin production	2 661	www.kovopb.cz
Silmet Příbram, a.s.	Příbram IV	25 - 49	Wholesale of solid, liquid and gaseous fuels and related products	2 619	www.silmet.cz
Ravak, a.s.	Příbram I	500 - 999	Manufacture of builders' ware of plastic	1 794	www.ravak.cz
Primagra, a.s.	Milín	200 - 249	Accounting, book-keeping and auditing activities; tax consultancy	1 721	www.primagra.cz
Trimet Prag, s.r.o.	Dobříš	1 - 5	Wholesale of metals and metal ores	1500 mil. and more	www.trimet.cz
Anbremetall, a.s.	Rybníky	50 - 99	Recycling of metal waste and scrap	1500 mil. and more	www.anbremetall.cz
Masna Příbram, s.r.o.	Příbram I	250 - 499	Production and preserving of meat	1 383	www.masna-pribram.cz
Povltavské mlékárny, a. s.	Sedčany	250 - 499	Operation of dairies and cheese making	1 326	www.pm-sedlcany.cz
Bierhanzl Group, a.s.	Břežnice	100 - 199	Wholesale of wood, construction materials and sanitary equipment	1 308	www.bierhanzl.cz
ZAT, a.s.	Příbram VI - Březové Hory	250 - 499	Manufacture of industrial process control equipment	1 174	www.zat.cz
Czech Computer, s.r.o.	Sedlice	50 - 99	Retail in office equipment, computers and standard software	927	www.czechcomputer.cz
Disa Industries, s.r.o.	Příbram I	n/a	Manufacture of other general purpose machinery n.e.c.	898	www.disagroup.cz
Stanislav Šefl - Medos	Rožmitál pod Třemšínem	50 - 99	Retail sale of automotive fuel	500 - 999 mil.	
Pogrr, s.r.o.	Příbram I	100 - 199	Non-specialized wholesale of food, beverages and tobacco	500 - 999 mil.	www.pogrr.cz
ing. Petr Nohel NOHEL - GARDEN	Svaté Pole - Budínek	200 - 249	Other wholesale	500 - 999 mil.	www.nohelgarden.cz
Aluhut, a.s.	Rybníky	20 - 24	Aluminium production	500 - 999 mil.	www.aluhut.cz
Stros - Sedčanské strojírny, a.s.	Sedčany	100 - 199	Manufacture of lifting and handling equipment	378	www.stros.cz
Pilecký, s.r.o.	Nový Knín	20 - 24	Other wholesale	355	www.pilecky.cz
Jednota Příbram, družstvo	Příbram II	100 - 199	Retail sale in non-specialized stores with food, beverages or tobacco predominating	333	www.jednotapribram.cz
Obchodní Firma Kučera, s.r.o.	Sedčany	1 - 5	Other wholesale	323	

DISTRICT RAKOVNÍK



BASIC DATA	
Land Area	930 km ²

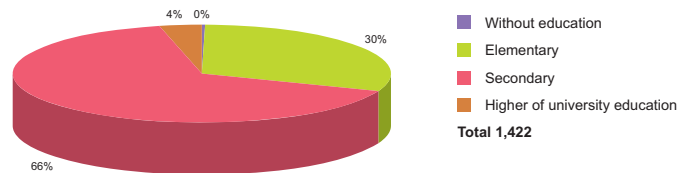
TOWNS WITH POPULATION OVER 5,000	
Rakovník	16,265
Nové Strašecí	5,175

Source: Czech Statistical Office

ACTUAL SITUATION ON LABOUR MARKET	
Population	54,549
Percentage in the total population of Czech Republic (%)	4.4
Population density (person/km ²)	58.7
Workforce	27,266
Number of job seekers	1,927
Unemployment rate (%)	6.9

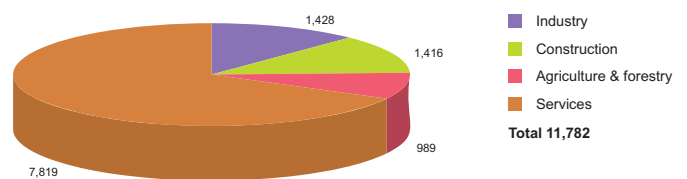
Source: Czech Statistical Office, Ministry of Labour and Social Affairs

NUMBER OF JOB SEEKERS ACCORDING TO EDUCATION



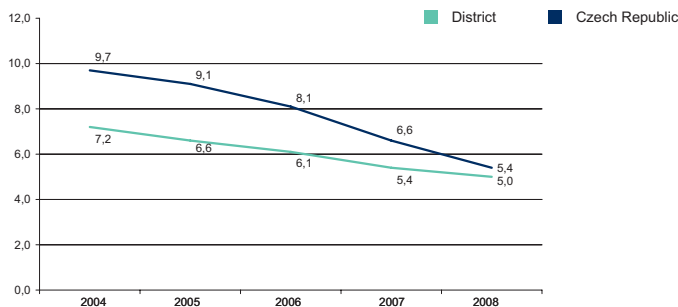
Source: Ministry of Labour and Social Affairs

NUMBER OF ECONOMIC UNITS ACCORDING TO PREVAILING ACTIVITY



Source: Czech Statistical Office

UNEMPLOYMENT - 5 YEAR TREND (%/YEAR)



Source: Czech Statistical Office

FOREIGN DIRECT INVESTMENT

	FDI (CZK)	FDI (EUR)
Rakovník	3 965 458	148 965
CR (total)	2 032 111 185	76 337 761
Prague	1 049 062 899	39 408 824
Central Bohemia Average	19 274 074	724 045

Source: Czech National Bank

IMPORTANT COMPANIES IN THE DISTRICT ACCORDING TO TURNOVER

Name of company	Location	Employees	Activity (Sector)	Turnover	www
Valeo Autoklimatizace, k.s.	Rakovník II	1000 - 1499	Manufacture of parts and accessories for motor vehicles and their engines	1500 mil. and more	www.valeo.com
Procter & Gamble Materials Management	Rakovník II	1 - 5	Other retail sale in specialized stores	1500 mil. and more	
Královský pivovar Krušovice, a.s.	Krušovice	n/a	Manufacture of beer	1 324	www.krusovice.cz
Zemědělské zásobování a nákup Rakovník,	Rakovník II	n/a	Manufacture of prepared feeds for farm animals	1000 - 1499 mil.	www.zznrakovnik.cz
Procter & Gamble - Rakona, s.r.o.	Rakovník II	500 - 999	Manufacture of soap and detergents, cleaning and polishing preparations	1000 - 1499 mil.	www.procter-gamble.cz
Losl, s.r.o.	Rakovník II	20 - 24	Maintenance and repair of motor vehicles	1 000	www.losl.cz
Croy, s.r.o.	Rakovník II	n/a	Sale of motor vehicles	549	www.croy.cz
Anexia, s.r.o.	Rakovník II	200 - 249	Freight transport by road	499	www.anexia.cz
Jednota, spotřební družstvo v Rakovníku	Rakovník II	n/a	Retail sale in non-specialized stores with food, beverages or tobacco predominating	428	
Volodymyr Kobysň	Rynholec	n/a	General mechanical engineering	300 - 499 mil.	
České lupkové závody, a.s.	Nové Strašecí	250 - 499	Mining of kaolin	398	www.cluz.cz
Geodis-Rakotrans, s.r.o.	Rakovník II	n/a	Other supporting transport activities	264	
Elektro - viola, s.r.o.	Rakovník II	25 - 49	Other retail sale	206	www.viola.cz
Rakotrans Doprava CZ, s.r.o.	Rakovník II	10 - 19	Freight transport by road	200 - 299 mil.	www.rakotrans.cz
Kverneland Czech, s.r.o.	Branov	n/a	Other business activities n.e.c.	200 - 299 mil.	www.kverneland.cz
Ivan Popyk	Senomaty	n/a	Site preparation	200 - 299 mil.	
Metall Holding Lány, a.s.	Lány	50 - 99	Forging, pressing, stamping and roll forming of metal; powder metallurgy	138	
Pentre Kovo CZ, s.r.o.	Lubná u Rakovníka	n/a	Manufacture of locks and hinges	132	
Qalt Rakovník, s.r.o.	Zavidov	25 - 49	Other retail sale in specialized stores	121	www.qalt.cz
BR Progress, s.r.o.	Rakovník II	n/a	Real estate agencies	106	www.brprogress.cz