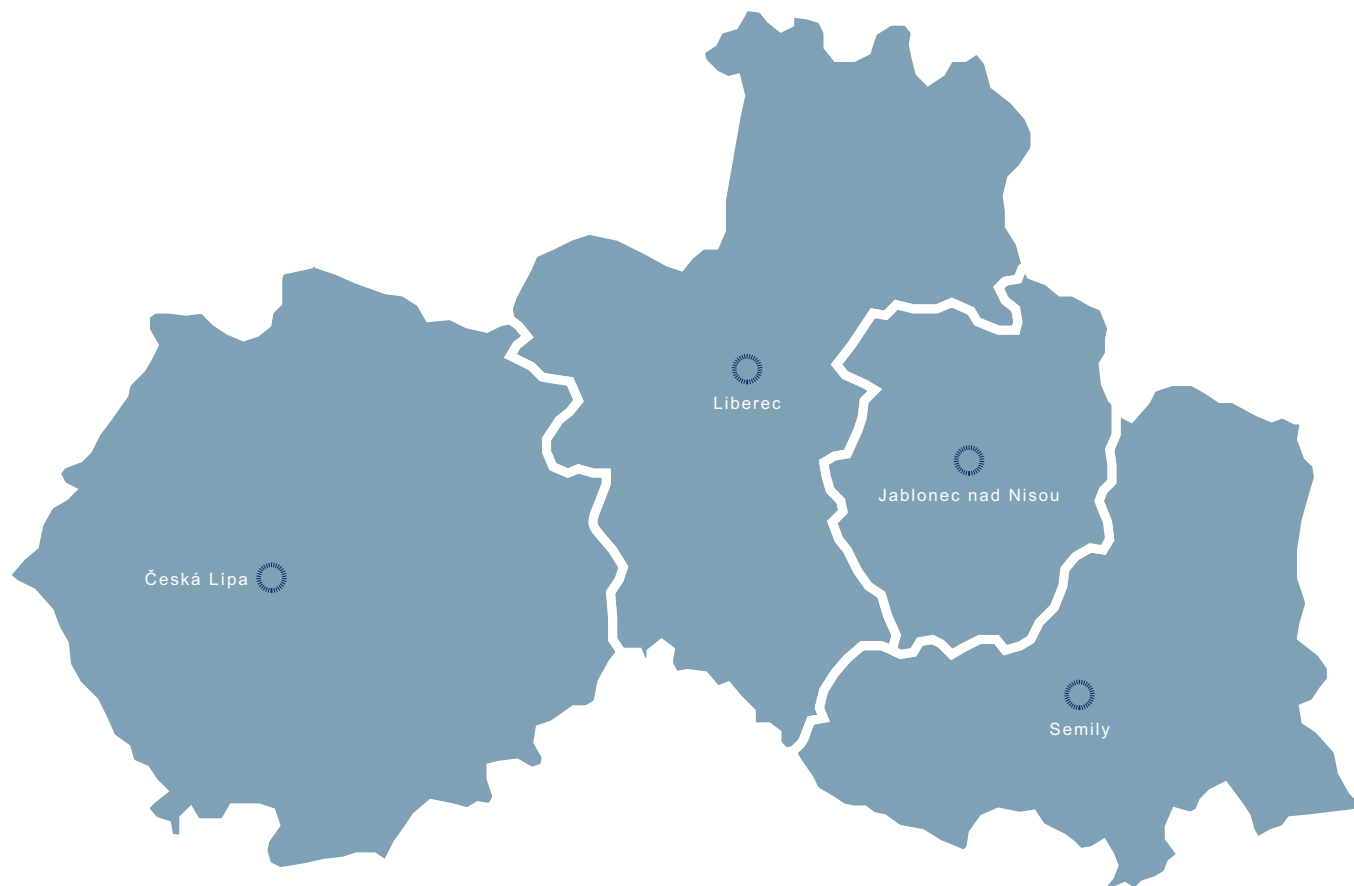


# LIBEREC REGION

DISTRICT ČESKÁ LÍPA  
DISTRICT JABLONEC NAD NISOU  
DISTRICT LIBEREC  
DISTRICT SEMILY



## ABOUT REGION

The Liberec Region is located in North Bohemia on the borders of Saxony and Poland, neighboring the regions Hradec Králové, Central Bohemia and Ústí nad Labem. The region of Liberec is divided among four districts: Česká Lípa, Jablonec nad Nisou, Liberec and Semily. It is the smallest region of the Czech Republic. Its area is just 3,163 km<sup>2</sup> or 4.0 % of the national territory. As of H1 2009 the region had 437,168 inhabitants, which was about 4.2 % of the population of the Czech Republic, one of the smallest among all regions in the country.

There are 215 communities in the region, which is 3.4 % of all communities in the country, only the region Karlovy Vary is behind Liberecký in this respect. Liberec (population 98,781) is the regional capital. There are only 15 towns with a population exceeding 5,000 in the region. Although Liberec Region is the smallest region in the Czech Republic, there are five protected landscape areas – among others: Jizerské hory, Český ráj, Kokořínsko) and a part of the National park Krkonoše.

The Liberec Region is remarkable for the density of recreational facilities built on its territory, mainly in Český ráj and around the lake Máchovo jezero. There are ideal conditions for winter sports in the region, mainly in western Krkonoše and in Jizerské hory with Jizerská magistrála, a ski highway running along the main range of the mountains. Even Liberec is an important winter sport center.

No landmark from the list of UNESCO can be found on the territory of this region but rock towns in Český ráj are among candidates. As for castles,

the most important are Hrubý Rohozec, Bezděz, Zákupy and Sychrov. Glass blowing museums in Nový Bor, Kamenický Šenov and Železný Brod, as well as the “Krkonošské museum” in Jilemnice, display local traditions to visitors. The zoo, botany garden and aquacentrum in Liberec belong to the most visited places.

There is just one university in the Liberec Region, the Technical University of Liberec (TUL) with six colleges. Art and Architecture College and Mechatronics College have certain importance, exceeding the regional boundaries, while a textile engineering college keeps the very top international level. The only school on this level for textile technologies in Czech Republic has a large share in research and development in Europe.

This region has the highest proportion of manufacturing in the Czech Republic. Glassworks and trinket factories are among the largest enterprises here and there is a big inflow of foreign investment to the local car making industry. The importance of the textile industry is of course very high. Another primary sector is the lumber industry and strong clusters of glassmaking and technical textiles production have been here for a long time.

The region's potential is in cluster initiatives growing from local traditional activities, supplies of raw materials for glassmaking and the construction industry, good road connection to the capital, research potential of universities in the area of technical textiles, both natural and cultural landmarks, good condition for development of winter sports, a high number of frontier - transit points and a high density of recreation facilities.

BASIC DATA	
Land Area	3,163 km <sup>2</sup>

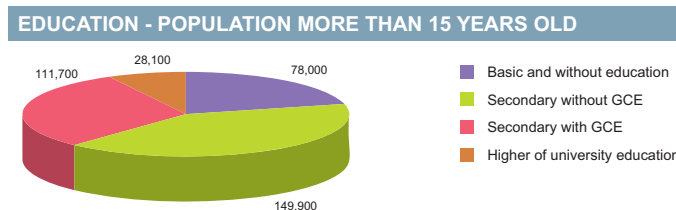
  

ACTUAL SITUATION ON LABOUR MARKET	
Population	437,168
Percentage in the total population of Czech Republic (%)	4.2
Population density (person/km <sup>2</sup> )	138.2
Workforce	226,118
Number of job seekers	22,265
Unemployment rate (%)	9.6

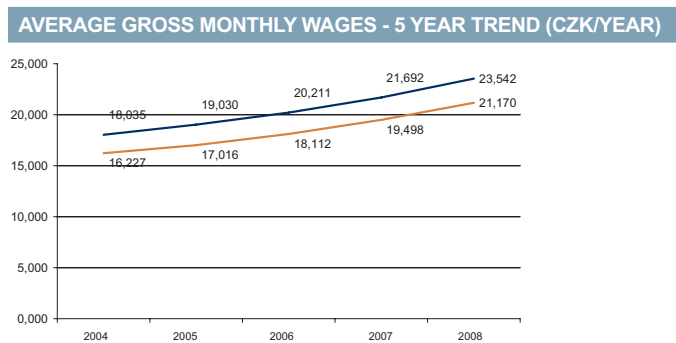
Source: Czech Statistical Office, Ministry of Labour and Social Affairs

NUMBER OF ECONOMIC UNITS ACCORDING TO PREVAILING ACTIVITY	
<b>Total</b>	<b>114,491</b>
Industry	17,909
Construction	16,006
Agriculture & forestry	6,206
Services	73,964

Source: Czech Statistical Office



Source: Czech Statistical Office



Source: Czech Statistical Office

GDP BY REGIONS				
Region	TOTAL		Per capita	
	mln. CZK	mln. EUR	Total CZK	Total EUR
Liberec	120 893	4 847	279 775	10 076
Average GDP for Czech regions	252 161	10 110	341 989	13 711
Share in GDP of the Czech Republic	3%			

Source: Czech Statistical Office

AVERAGE GROSS MONTHLY WAGES - 5 YEAR TREND										
Year	2004		2005		2006		2007		2008	
	CZK	EUR	CZK	EUR	CZK	EUR	CZK	EUR	CZK	EUR
Liberec	16,227	509	17,016	571	18,112	639	19,498	702	21,170	849
Average for Czech Republic	18,035	565	19,030	639	20,211	713	21,692	781	23,542	944

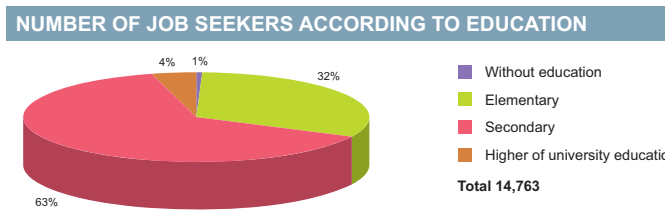
Source: Czech Statistical Office

ADMINISTRATIVE BREAKDOWN	
Number of districts	4
Number of municipalities	215
of that, number of towns	39

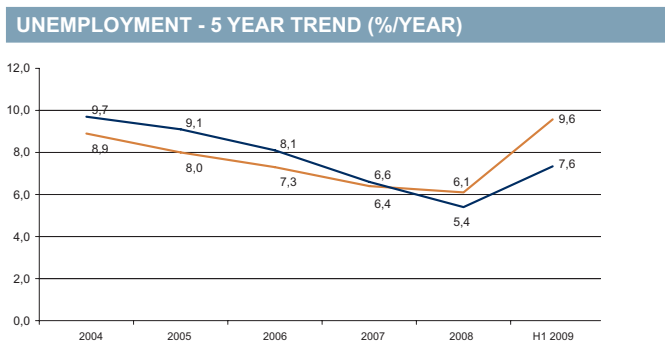
Source: Czech Statistical Office

NUMBER OF EMPLOYEES AND GROSS MONTHLY WAGES IN MANUFACTURING ACCORDING TO NACE CLASSIFICATION		
	Number of employees	Wages (EUR)
<b>Manufacturing</b>	<b>47,215</b>	<b>900</b>
Man. of food products, beverages and tobacco products	1,354	741
Man. of chemical, chemical products, pharmaceuticals, and chemical fibres	NA	NA
Man. of rubber and plastic products	4,614	946
Man. of basic metals and fabricated metal products	2,372	937
Man. and repairs of machinery and equipment	5,113	969
Man. of electrical and optical equipment	7,307	863
Man. of transport equipment	8,658	1,114

Source: Czech Statistical Office



Source: Ministry of Labour and Social Affairs



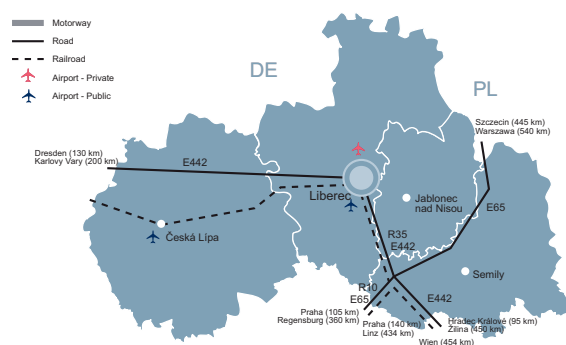
Source: Czech Statistical Office

FOREIGN DIRECT INVESTMENT		
Region	FDI (CZK)	FDI (EUR)
min.	17 940 192	673 937
Liberec	52 675 492	1 978 794
max.	1 049 062 899	39 408 824
Average	145 150 799	5 452 697

Source: Czech National Bank

LIST OF AIRPORTS			
	Specification		
	Public/Private	Civil/Military/Varied	International/Intranational
Česká Lípa	Public	Civil	Intranational
Hodkovice nad Mohelkou	Public	Civil	Intranational
Liberec	Private	Civil	International

Source: Ministry of Transport, Aerobaze.cz



SCHOOL SYSTEM			
	Number of schools	Number of students	Number of graduates
<b>Secondary schools</b>			
Technical fields	n/a	6 423	1 527
Economic fields	n/a	6 656	1 698
ICT fields	n/a	1 053	324
<b>Higher schools</b>			
Technical fields	n/a	55	n/a
Economic fields	n/a	393	74
ICT fields	n/a	55	n/a
<b>Universities</b>			
Technical fields	1	3 011	396
Economic fields	1	2 021	429
ICT fields	1	965	222

Source: Institute for Information on Education

LABOUR OFFICE				
City	Address	Phone	Fax	E-mail
Česká Lípa	Paní Zdislavy 419/6, 470 01 Česká Lípa 1	950 108 111	950 108 402	posta@cl.mpsv.cz
Jablonec nad Nisou	Emilie Floriánové 1004/3, 466 01 Jablonec nad Nisou 1	950 120 111	950 120 480	posta@jn.mpsv.cz
Liberec	Dr. Milady Horákové 361/23, 460 01 Liberec 1	950 132 111	950 132 302	posta@lb.mpsv.cz
Semily	Bořkovská č.p. 572, 513 01 Semily	481 650 111	481 650 317	posta.up@sm.mpsv.cz

Source: Ministry of Labour and Social Affairs

SELECTED CZECHINVEST PROJECTS IN THE REGION					
Name	Location	Investor	Country	Sector	Year
ArvinMeritor LVS Liberec a.s.	Liberec	ArvinMeritor Holdings SNC	USA	manufacture of motor vehicles	2008
AUTOBATERIE, spol. s r.o.	Česká Lípa	Autobaterie	Germany	manufacture of motor vehicles	2000
Cutisin, s.r.o.	Hrabačov	Devro	United Kingdom	food processing	2004
DENSO MANUFACTURING CZECH s.r.o.	Liberec	Denso	Japan	manufacture of motor vehicles	2001
Faerch Plast s.r.o.	Liberec	R. Faerch Plast	Denmark	plastics, rubber	2006
Fehrer Bohemia s.r.o.	Česká Lípa	Fehrer	Germany	manufacture of motor vehicles	2002
Laird Technologies s.r.o.	Liberec	Laird Technologies	United Kingdom	electronics, electrotechnics	2003
LIPLASTEC s.r.o.	Liberec	Shimizu	Japan	manufacture of motor vehicles	2002
Lucas Varity s.r.o.	Jablonec nad Nisou, Frydlant v Čechách	TRW Automotive	USA	manufacture of motor vehicles	2006
MEHLER ENGINEERED PRODUCTS s.r.o.	Jilemnice	Mehler	Germany	other	2005
Monroe Czechia s.r.o.	Liberec	Monroe Czechia	USA	manufacture of motor vehicles	2002
MSV SYSTEMS CZ s.r.o.	Liberec	MSV SYSTEMS CZ s.r.o.	Czech Republic	electronics, electrotechnics	2008
ONTEX CZ s.r.o.	Turnov	Ontex	Belgium	other	2000
Technolen technický textil a. s.	Hlinsko, Jilemnice, Lomnice nad Popelkou	Mehler	Germany	other	2005
TeLogic s.r.o.	Liberec	TeLogic s.r.o.	Germany	IT, software development	2008
TI Automotive AC s.r.o.	Jablonec nad Nisou, Mladá Boleslav	TI Automotive	United Kingdom	manufacture of motor vehicles	2001
TRUMPF Liberec, spol. s r.o.	Liberec	TRUMPF Group/Ditzingen	Germany	engineering	2005

Source: CzechInvest

IMPORTANT COMPANIES IN THE REGION ACCORDING TO TURNOVER							
Name of company	Location	Employees	Activity (Sector)	Turnover	Phone	E-mail	WWW
Johnson Controls Automobilové Součástky,	Česká Lípa	3000 - 3999	Manufacture of chairs and seats	23 665	487 803 111, 487 803 110	prague.office@jci.com	www.johnsoncontrols.com
Lucas Varity, s.r.o.	Jablonec nad Nisou	1000 - 1499	Manufacture of parts and accessories for motor vehicles and their engines	9 189	482 364 111, 482 364 112	aftermarket.cz@tw.com	www.lucas.cz
Denso Manufacturing Czech, s.r.o.	Liberec XXIII - Doubí	1500 - 1999	Manufacture of non-domestic cooling and ventilation equipment	8 443	482 323 651, 482 323 544	info@denso.cz	www.denso.cz
Benteler ČR, s.r.o.	Chrastava	n/a	Manufacture of parts and accessories for motor vehicles and their engines	5 607	482 421 622, 482 421 999	info@benteler.cz	www.benteler.cz
Johnson Controls Autobaterie spol. s r.o.	Česká Lípa	500 - 999	Manufacture of accumulators, primary cells and primary batteries	5 445	487 807 221, 487 807 275	info-cz@varta-automotive.com	www.varta-automotive.cz
Syner, s.r.o.	Liberec IV - Perštýn	250 - 499	General construction of buildings and civil engineering works	4 795	731 547 752, 486 123 111	info@syner.cz, syner@syner.cz	www.syner.cz
Diamo, s.p.	Stráž pod Ralskem	3000 - 3999	Mining of uranium and thorium ores	4 370	487 851 401, 487 851 432	diamo@diamo.cz	www.diamo.cz
KM - Prona, a.s.	Brištět	25 - 49	Retail sale of automotive fuel	4 296	485 246 708, 485 246 705	km-prona@km-prona.cz	www.km-prona.cz
ArvinMeritor LVS Liberec, a.s.	Liberec VIII - Dolní Hanychov	500 - 999	Manufacture of parts and accessories for motor vehicles and their engines	3 602	485 229 111, 485 229 307	volna.mista@arvinmeritor.com	www.arvinmeritor.com
Monroe Czechia, s.r.o.	Hodkovice nad Mohelkou	500 - 999	Manufacture of parts and accessories for motor vehicles and their engines	3 379	485 237 312, 485 237 212	josef.pivnec@eu.tenneco-automotive.com	www.eu.tenneco-automotive.com
Johnson Controls Czech, s.r.o.	Česká Lípa	1 - 5	Letting of own property	3 056	487 803 111, 487 807 111		
Sklostroj Turnov CZ, s.r.o.	Turnov	250 - 499	Manufacture of other special purpose machinery and equipment	2 471	481 350 210, 481 350 290	sklostroj@sklostroj.cz	www.sklostroj.cz
Grupo Antolin Turnov, s.r.o.	Turnov	250 - 499	Manufacture of plastic components for productive consumption	2 383	481 363 711, 481 636 743	info@grupoantolin.com	www.grupoantolin.com
Cutisin, s.r.o.	Jilemnice - Hrabačov	1000 - 1499	Manufacture of plastic plates, sheets, tubes and profiles	1 878	481 563 111, 544 123 111	general.cutisin@devro-casings.com	www.cutisin.cz
LVZ, a.s.	Liberec VI - Rochlice	250 - 499	Manufacture of non-domestic cooling and ventilation equipment	1 672	485 225 111, 488 010 111		www.gealvz.cz
TI Group Automotive Systems, s.r.o.	Jablonec nad Nisou - Rýnovice	250 - 499	Forging, pressing, stamping and roll forming of metal; powder metallurgy	1 635	483 334 111	jvagenknechtova@cz.tiauto.com	
Cadence Innovation, s.r.o.	Liberec VI - Rochlice	n/a	Manufacture of other special purpose machinery n.e.c.	1 596	485 104 415		
Preciosa, a.s.	Jablonec nad Nisou	3000 - 3999	Manufacture and processing of other glass, including technical glassware	1500 mil. a více	488 115 555, 483 225 111	info@preciosa.com	www.preciosa.cz, www.preciosa.com
Peguform Plastic, s.r.o.	Liberec VI - Rochlice	250 - 499	Manufacture of tools	1500 mil. a více	485 292 001	info@cadenceinnovation.cz	
Ontex CZ, s.r.o.	Turnov - Daliměřice	500 - 999	Manufacture of household and sanitary goods and of toilet requisites	1500 mil. a více	481 319 600, 481 323 320	obchod@ontexglobal.com	www.ontex.cz

Source: Albertina Company Monitor

KNOWLEDGE OF FOREIGN LANGUAGES			
LANGUAGE	ALL SKILLS LEVEL (%)	LANGUAGE	ALL SKILLS LEVEL (%)
English	36.5	Spanish	2.1
German	40.6	Polish	1.0
French	3.1	Russian	41.7
Italian	4.2	Nordic languages	1.0

Source: Augur Consulting

LIST OF UNIVERSITIES 2009				
Name of school	WWW	Orientation	Titles awarded	Students
Technická univerzita v Liberci	www.tul.cz	Variety of programmes	Bc., Mgr., Ph.D., BcA., Ing. Arch., Ing.	9 415

Source: Institute for Information on Education

**RENTS IN INDUSTRIAL PREMISES IN CR REGIONS (EUR/sqm/month)**

Liberec Region	3,5-4,0
Note 1: Net effective rents for units ca 4,000 sq m which is average deal size in the market	
Note 2: Premises are immediately available only some regions.	

Source: CB Richard Ellis

**PRIME RENTS IN SHOPPING CENTRES (EUR/sqm/month)**

Liberec Region	23-33
Note: for units ca 100 sqm.	

Source: CB Richard Ellis

**INDUSTRIAL PARKS IN THE CZECH REPUBLIC**

Project	Region	City/ Town	Total Area (warehouse + office)	Year of Completion
VGP Park Liberec	Liberec	Liberec	35 764	2008-2009
VGP Park Turnov Příšovice	Liberec	Příšovice	10 574	2008
VGP Park Turnov Vesecko	Liberec	Vesecko	12 037	n/a

Source: CB Richard Ellis

**SELECTED INDUSTRIAL ZONES IN THE LIBEREC REGION**

Industrial zone	Area (ha)
Hrádek nad Nisou - Oldřichovská	26,17
Liberec - North	99,00
Liberec JIH	125,00
Nový Bor - Za Crystalexem	17,19
Ralsko - Kuřivody	25,00
Stráž pod Ralskem	29,20

Source: CzechInvest

**IMPORTANT CONTACTS IN THE REGION****Regional Council**

U Jezů 642/2a, 46180 Liberec 2  
tel.: 485 226 111  
fax: 485 226 330, 485 226 362  
Email: info@kraj-lbc.cz  
URL: www.kraj-lbc.cz

**City Hall – Liberec**

nám. Dr. E. Beneše 1, 46059 Liberec  
tel.: 485 243 111, 488 050 111  
fax: 485 243 113  
Email: info@magistrat.liberec.cz  
URL: www.liberec.cz

**CzechInvest - Regional Office**

nám. Dr. E. Beneše 4/12, 460 01 Liberec  
tel.: 482 710 353, 482 710 065  
fax: 485 105 517  
Email: liberec@czechinvest.org  
Contact persons: Mgr. Jan Marek, Ing. Marie Lesná

**Regional Development Agency - ARR**

Tř. 1. máje 26/858, 460 01 Liberec III  
tel.: 488 577 070, 488 577 072  
fax: 488 577 071  
Email: info@arr-nisa.cz  
URL: www.arr-nisa.cz

**Euro Info Center - Liberec CZ-643-**

Tř. 1. máje 26, 460 01 Liberec 3  
tel.: 485 340 978  
fax: 485 340 977  
Email: info@arr-nisa.cz  
URL: www.arr-nisa.cz  
Contact person: Tomáš Šámal

**Regional Consulting & Information**

Center - REGIOINFO, spol. s r.o.  
Jablonecká 8/31, 460 01 Liberec 5  
tel.: 482 710 625  
fax: 482 710 626  
Email: regio@mbox.vol.cz  
URL: www.regioninfo.cz  
Contact person: Ing. Vladimíra Žďárská

**CzechTrade Regional Information Place**

(Regional Consultants for Liberec)  
Dittrichova 21, 128 01 Praha 2  
tel.: 224 907 544, 724 966 504  
fax: 224 913 805  
Email: adriana.dohnalova@czechtrade.cz  
Contact person: PhDr. Adriana Dohnalová

**Regional Economic Chamber – Liberec**

Rumunská 655/9, 460 01 Liberec  
tel.: 485 100 148  
fax: 485 100 767  
Email: info@khkliberec.cz  
URL: www.khkliberec.cz

**UTILITIES****GAS****Východočeská plynárenská, a.s.**

(for Eastern part of the region)  
Pražská ulice 702, 500 04 Hradec Králové  
tel.: 495 060 111  
fax: 495 532 745  
Email: info@rwe-vcp.cz, obchod@rwe-vcp.cz  
URL: www.vcp.cz

**ELECTRICITY****Severočeská energetika, a. s.**

(for Western part of the region)  
Sladkovského 215, 501 03 Hradec Králové  
tel.: 840 840 840  
fax: 411 122 977  
Email: info@duhovaenergie.cz  
URL: www.vce.cz

**Východočeská energetika, a.s.**

(for Eastern part of the region)  
Sladkovského 215, 501 03 Hradec Králové  
tel.: 495 842 201, 840 840 840  
fax: 495 842 198  
Email: info@duhovaenergie.cz  
URL: www.vce.cz

**WATER AND SEWER SYSTEM****Vodovody a kanalizace, a.s. Turnov (VaK)**

Kotlerovo nábř. 1379, 511 01 Turnov  
tel.: 481 322 141  
fax: 481 324 471  
Email: vaktturnov@iol.cz  
URL: www.turnov.cz/org/vak.htm  
**Frydlantské vodárenské sdružení**  
nám. T. G. Masaryka 37, 464 01 Frýdlant  
tel.: 482 312 122  
fax: 482 312 388

**HEAT****WTG-LK, spol. s r.o.**

Bíloustecká 223, 463 31 Chrastava  
tel.: 482 772 712, 602 447 961, 777 800 080  
fax: 482 772 715  
Email: wtglk@wtglk.cz  
URL: www.wtglk.cz/

**Desenská teplárenská, spol. s r.o.**

Údolní 295, 468 61 Desná  
tel.: 483 383 662

**Jablonecká teplárenská a realitní, a.s.**

Liberecká 480, 466 01 Jablonec nad Nisou  
tel.: 483 359 811  
fax: 483 311 897

**Lenoxa, a.s.**

Bukovského 222/4, 460 12 Liberec  
tel.: 485 201 010  
fax: 485 201 770  
Email: lenoxa@lenoxa.cz  
URL: www.lenoxa.cz

**TEPLO FRÝDLANT**

Fügnerova 1405, 464 01 Frýdlant  
Telefon: 482 312 442  
Email: teplofrydant@c-box.cz

**TEPLO NOVÝ BOR, spol. s r.o.**

Wolkerova 588, 473 01 Nový Bor  
tel.: 487 727 894

**Teplárství Tanvald, spol. s r.o.**

Pod Špičákem 546, 468 41 Tanvald  
tel.: 483 394 579  
fax: 483 395 898

**Teplárna Liberec, a.s.**

Dr. Milady Horákové 641/34a,  
460 06 Liberec  
tel.: 485 386 240, 485 386 111  
URL: www.tlib.cz

**Teplárny Jablonec, a.s.**

Liberecká 2167/18,  
466 01 Jablonec nad Nisou  
tel.: 483 312 921  
fax: 483 712 920  
Email: sekretariat@teplarnyjablonec.cz  
URL: www.teplarnyjablonec.cz



# DISTRICT ČESKÁ LÍPA

## BASIC DATA

Land Area	1,137 km <sup>2</sup>
-----------	-----------------------

## TOWNS WITH POPULATION OVER 5,000

Česká Lípa	38,315	Mimoň	6,771
Nový Bor	12,236	Doksy	5,119

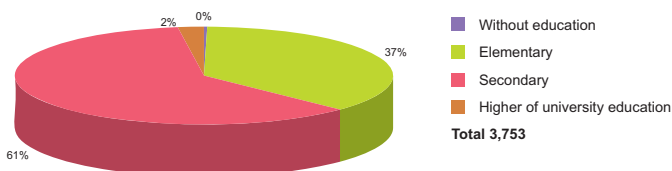
Source: Czech Statistical Office

## ACTUAL SITUATION ON LABOUR MARKET

Population	103,949
Percentage in the total population of Czech Republic (%)	23.8
Population density (person/km <sup>2</sup> )	91.4
Workforce	54,162
Number of job seekers	6,692
Unemployment rate (%)	12.1

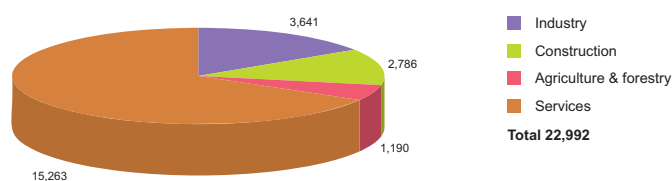
Source: Czech Statistical Office, Ministry of Labour and Social Affairs

## NUMBER OF JOB SEEKERS ACCORDING TO EDUCATION



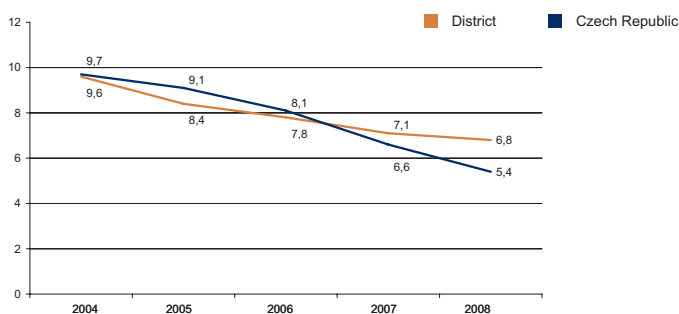
Source: Ministry of Labour and Social Affairs

## NUMBER OF ECONOMIC UNITS ACCORDING TO PREVAILING ACTIVITY



Source: Czech Statistical Office

## UNEMPLOYMENT - 5 YEAR TREND (%/YEAR)



Source: Czech Statistical Office

## FOREIGN DIRECT INVESTMENT

	FDI (CZK)	FDI (EUR)
Česká Lípa	25 179 667	945 893
CR (total)	2 032 111 185	76 337 761
Prague	1 049 062 899	39 408 824
Liberec Average	13 168 873	494 698

Source: Czech National Bank

## IMPORTANT COMPANIES IN THE DISTRICT ACCORDING TO TURNOVER

Name of company	Location	Employees	Activity (Sector)	Turnover	www
Johnson Controls Automobilové Součástky	Česká Lípa	3000 - 3999	Manufacture of chairs and seats	23 665	www.johnsoncontrols.com
Johnson Controls Autobaterie spol. s r.o	Česká Lípa	500 - 999	Manufacture of accumulators, primary cells and primary batteries	5 445	www.varta-automotive.cz
Diamo, s.p.	Stráž pod Ralskem	3000 - 3999	Mining of uranium and thorium ores	4 370	www.diamo.cz
Johnson Controls Czech, s.r.o.	Česká Lípa	1 - 5	Letting of own property	3 056	
Fehrer Bohemia, s.r.o.	Česká Lípa - Dubice	500 - 999	Manufacture of chairs and seats	1500 mil. and more	www.fehrer.com
Delphi Packard Electric Česká republika	Česká Lípa Dubice	3000 - 3999	Manufacture of electrical equipment for engines and vehicles n.e.c.	1500 mil. and more	www.delphi.com
Crystalex, a.s.	Nový Bor	2000 - 2499	Manufacture of hollow glass	1500 mil. and more	www.crystalex.cz
Bombardier Transportation Czech	Česká Lípa	250 - 499	Manufacture of railway and tramway locomotives and rolling stock	1 130	www.transport.bombardier.com
Protool s.r.o.	Česká Lípa	500 - 999	Manufacture of portable hand held power tools	1 075	www.narex.cz
VfG Cosmian, s.r.o.	Česká Lípa	n/a	Other business activities n.e.c.	1000 - 1499 mil.	
Vest-lzol, s.r.o.	Zákupy	250 - 499	Wholesale of wood, construction materials and sanitary equipment	875	
saM silnice a mosty, a.s.	Česká Lípa	200 - 249	Construction of motorways, roads, airfields and sport facilities	599	www.sam-cl.cz
Preciosa - Lustry, a.s.	Kamenický Šenov	500 - 999	Manufacture of lighting equipment and electric lamps	500 - 999 mil.	
OMA CZ, a.s.	Stráž pod Ralskem	50 - 99	Retail sale of automotive fuel	500 - 999 mil.	www.omacz.cz
Jakub, a.s.	Nový Bor - Arnultovice	100 - 199	Wholesale of electrical household appliances and radio and television goods	500 - 999 mil.	www.jakub.cz
Mega, a.s.	Praha 9 - Libeň	50 - 99	Collection and treatment of sewage	445	www.mega.cz
FOL-Obal, s.r.o.	Doksy	n/a	Manufacture of plastic plates, sheets, tubes and profiles	417	
Silnice Záček, s.r.o.	Česká Lípa	50 - 99	Construction of motorways, roads, airfields and sport facilities	376	
Narex, s.r.o.	Česká Lípa	20 - 24	Manufacture of tools	363	www.narex.cz
Sauer Žandov, a.s.	Žandov	100 - 199	Manufacture of pumps and compressors	360	www.sauerzandov.cz

# DISTRICT JABLONEC NAD NISOU



## BASIC DATA

Land Area	402 km <sup>2</sup>
-----------	---------------------

## TOWNS WITH POPULATION OVER 5,000

Jablonec nad Nisou	45,051
Tanvald	6,956
Železný Brod	6,482

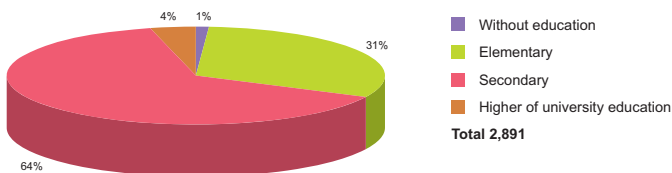
Source: Czech Statistical Office

## ACTUAL SITUATION ON LABOUR MARKET

Population	90,066
Percentage in the total population of Czech Republic (%)	20.6
Population density (person/km <sup>2</sup> )	224.0
Workforce	44,226
Number of job seekers	4,169
Unemployment rate (%)	9.0

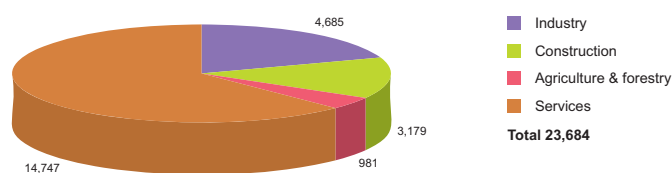
Source: Czech Statistical Office, Ministry of Labour and Social Affairs

## NUMBER OF JOB SEEKERS ACCORDING TO EDUCATION



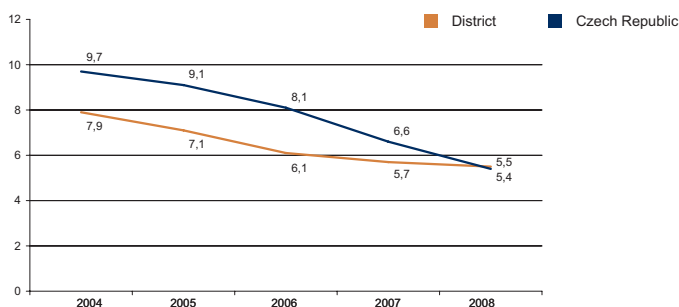
Source: Ministry of Labour and Social Affairs

## NUMBER OF ECONOMIC UNITS ACCORDING TO PREVAILING ACTIVITY



Source: Czech Statistical Office

## UNEMPLOYMENT - 5 YEAR TREND (%/YEAR)



Source: Czech Statistical Office

## FOREIGN DIRECT INVESTMENT

	FDI (CZK)	FDI (EUR)
Jablonec nad Nisou	9 384 232	352 526
CR (total)	2 032 111 185	76 337 761
Prague	1 049 062 899	39 408 824
Liberec Average	13 168 873	494 698

Source: Czech National Bank

## IMPORTANT COMPANIES IN THE DISTRICT ACCORDING TO TURNOVER

Name of company	Location	Employees	Activity (Sector)	Turnover	www
Lucas Varity, s.r.o.	Jablonec nad Nisou	1000 - 1499	Manufacture of parts and accessories for motor vehicles and their engines	9 189	www.lucas.cz
TI Group Automotive Systems, s.r.o.	Jablonec nad Nisou - Rýnovice	250 - 499	Forging, pressing, stamping and roll forming of metal; powder metallurgy	1 635	
Preciosa, a.s.	Jablonec nad Nisou	3000 - 3999	Manufacture and processing of other glass, including technical glassware	1500 mil. and more	www.preciosa.cz
Müller Sachsen GmbH, org.složka	Rychnov u Jablonce nad Nisou	1 - 5	Other wholesale	1500 mil. and more	
Jablonec Group, a.s.	Jablonec nad Nisou	3000 - 3999	Manufacture and processing of other glass, including technical glassware	2 861	www.jablonecgroup.cz
Centrum vína, s.r.o.	Jablonec nad Nisou	10 - 19	Restaurants	1 301	
A.Raymond Jablonec, s.r.o.	Jablonec nad Nisou - Rýnovice	100 - 199	Manufacture of other plastic products	976	
Jablotron, s.r.o.	Jablonec nad Nisou	100 - 199	Manufacture of other electrical equipment n.e.c.	823	www.jablotron.cz
Cikautxo CZ, s.r.o.	Jablonec nad Nisou - Kokonin	250 - 499	Manufacture of rubber products	590	www.cikautxo.cz
TI Automotive AC, s.r.o.	Jablonec nad Nisou - Rýnovice	250 - 499	General mechanical engineering	500 - 999 mil.	www.tiautomotive.com
International Metal Plast, s.r.o.	Jablonec nad Nisou 8	n/a	Manufacture of other fabricated metal products n.e.c.	500 - 999 mil.	www.imp-jablonec.cz
BTV plast, s.r.o.	Jablonec nad Nisou	500 - 999	Manufacture of parts and accessories for motor vehicles and their engines	500 - 999 mil.	www.btvplast.cz
AKT plastikařská technologie Čechy, s.r.	Jablonec nad Nisou - Rýnovice	250 - 499	Manufacture of plastic components for productive consumption	500 - 999 mil.	www.akt-cechy.cz
Seba T, a.s.	Tanvald	500 - 999	Cotton-type weaving	432	www.sebat.cz
JabloCOM, s.r.o.	Jablonec nad Nisou	25 - 49	Installation of electrical wiring and fittings	412	
Astra, s.r.o.	Jablonec nad Nisou	50 - 99	Sale of motor vehicles	412	www.stavebniny-astro.cz
Jablonecká teplárenská a realitní, a.s.	Jablonec nad Nisou	50 - 99	Real estate agencies	344	www.jtr.mvv.cz
Technology, s.r.o.	Jablonec nad Nisou	n/a	Technical testing and analysis	300 - 499 mil.	www.technology.cz
AG Plus, s.r.o.	Jablonec nad Nisou - Jablonecké Paseky	250 - 499	Manufacture of imitation jewellery	300 - 499 mil.	
Unitherm, s.r.o.	Jablonec nad Nisou - Mšeno nad Nisou	100 - 199	Casting of iron	265	www.unitherm.cz



# DISTRICT LIBEREC

## BASIC DATA

Land Area	925 km <sup>2</sup>
-----------	---------------------

## TOWNS WITH POPULATION OVER 5,000

Liberec	99,721	Hrádek nad Nisou	7,517
Frydlant	7,599	Chrastava	6,071

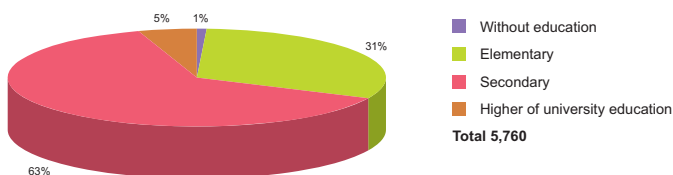
Source: Czech Statistical Office

## ACTUAL SITUATION ON LABOUR MARKET

Population	168,452
Percentage in the total population of Czech Republic (%)	38.5
Population density (person/km <sup>2</sup> )	182.1
Workforce	90,436
Number of job seekers	8,058
Unemployment rate (%)	8.7

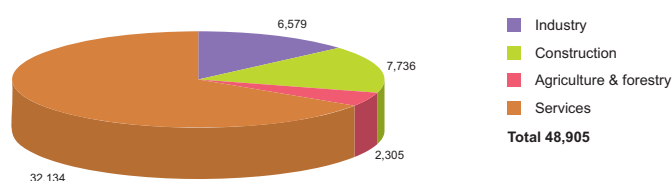
Source: Czech Statistical Office, Ministry of Labour and Social Affairs

## NUMBER OF JOB SEEKERS ACCORDING TO EDUCATION



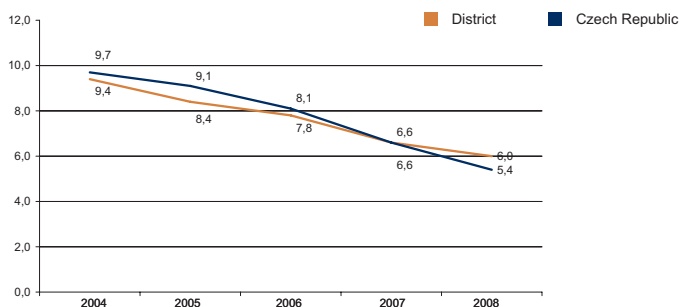
Source: Ministry of Labour and Social Affairs

## NUMBER OF ECONOMIC UNITS ACCORDING TO PREVAILING ACTIVITY



Source: Czech Statistical Office

## UNEMPLOYMENT - 5 YEAR TREND (%/YEAR)



Source: Czech Statistical Office

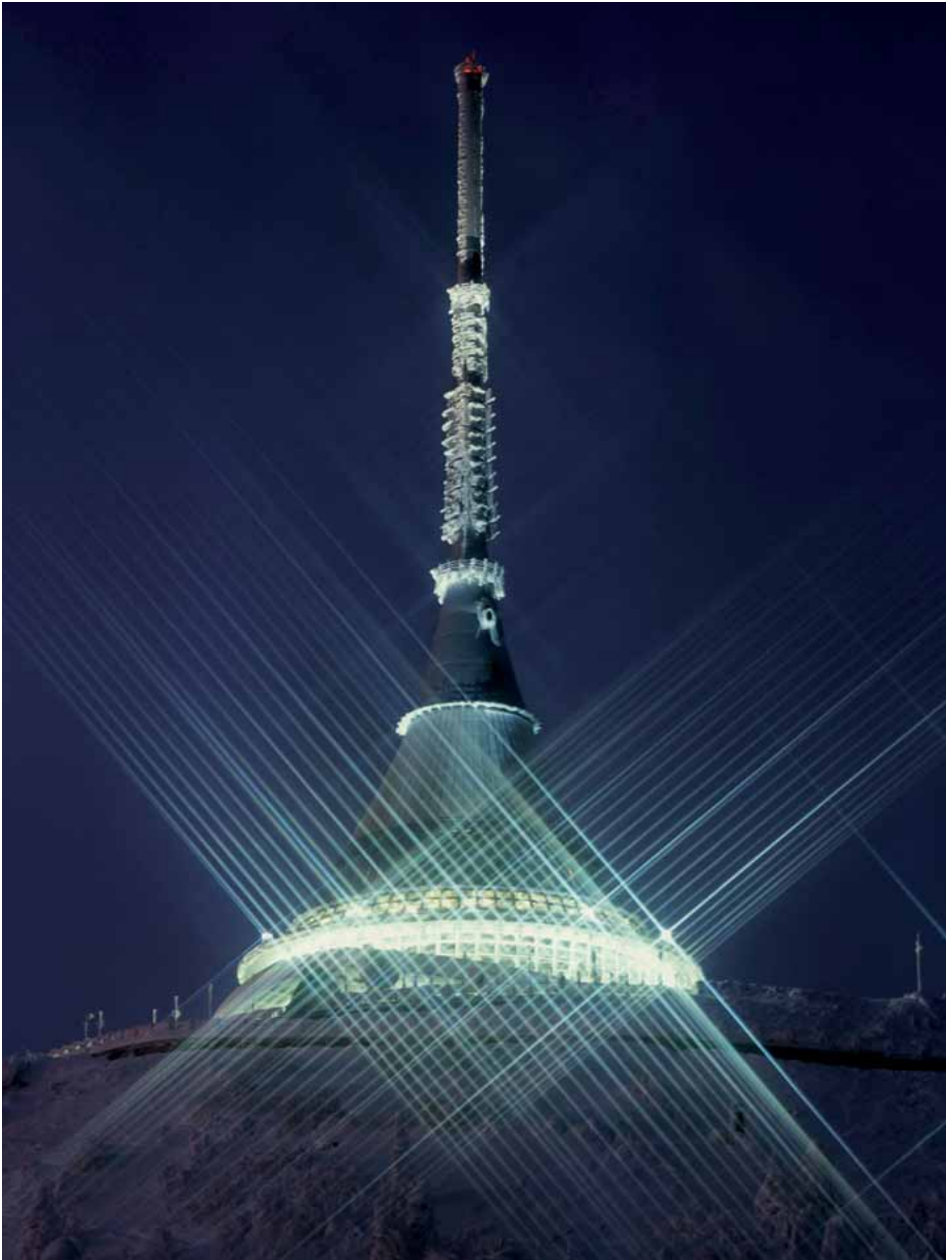
## FOREIGN DIRECT INVESTMENT

	FDI (CZK)	FDI (EUR)
Liberec	12 749 085	478 929
CR (total)	2 032 111 185	76 337 761
Prague	1 049 062 899	39 408 824
Liberec Average	13 168 873	494 698

Source: Czech National Bank

## IMPORTANT COMPANIES IN THE DISTRICT ACCORDING TO TURNOVER

Name of company	Location	Employees	Activity (Sector)	Turnover	www
Denso Manufacturing Czech, s.r.o.	Liberec XXIII - Doubi	1500 - 1999	Manufacture of non-domestic cooling and ventilation equipment	8 443	www.denso.cz
Benteler ČR, s.r.o.	Chrastava	n/a	Manufacture of parts and accessories for motor vehicles and their engines	5 607	www.benteler.cz
Syner, s.r.o.	Liberec IV - Perštýn	250 - 499	General construction of buildings and civil engineering works	4 795	www.syner.cz
KM - Prona, a.s.	Brníšťe	25 - 49	Retail sale of automotive fuel	4 296	www.km-prona.cz
ArvinMeritor LVS Liberec, a.s.	Liberec VIII - Dolní Hanychov	500 - 999	Manufacture of parts and accessories for motor vehicles and their engines	3 602	www.arvinmeritor.com
Monroe Czechia, s.r.o.	Hodkovice nad Mohelkou	500 - 999	Manufacture of parts and accessories for motor vehicles and their engines	3 379	www.eu.tenneco-automotive.com
LVZ, a.s.	Liberec VI - Rochlice	250 - 499	Manufacture of non-domestic cooling and ventilation equipment	1 672	www.gealvz.cz
Cadence Innovation, s.r.o.	Liberec VI - Rochlice	n/a	Manufacture of other special purpose machinery n.e.c.	1 596	
Peguform Plastic, s.r.o.	Liberec VI - Rochlice	250 - 499	Manufacture of tools	1500 mil. and more	
Knorr - Bremse Systémy pro užitková	Hejnice	250 - 499	Manufacture of parts and accessories for motor vehicles and their engines	1500 mil. and more	www.knorr-bremse.cz
Grupo Antolin Bohemia, a.s.	Dolní Chrastava	250 - 499	Manufacture of parts and accessories for motor vehicles and their engines	1500 mil. and more	www.grupoantolin.com
Bohemia Crystalex Trading, a.s.	Liberec I - Perštýn	100 - 199	Wholesale of china and glassware, wallpaper and cleaning materials	1500 mil. and more	www.bct.cz
Tarmac CZ, a.s.	Liberec I - Staré Město	250 - 499	Quarrying of stone, sands and gravel sand	1 376	www.tarmac.cz
Interma, a.s.	Liberec I - Staré Město	100 - 199	Development and selling of real estate	1 064	www.interma.cz
Pekm Kabeltechnik, s.r.o.	Liberec VI - Rochlice	250 - 499	Manufacture of electrical equipment for engines and vehicles n.e.c.	1000 - 1499 mil.	www.pekm.cz
Meritor Light Vehicle Systems, Inc.-	Liberec VIII - Dolní Hanychov	1 - 5	Wholesale on a fee or contract basis	1000 - 1499 mil.	
Trelleborg Fluid Solutions Czech	Hrádek nad Nisou	500 - 999	Manufacture of other plastic products	840	www.trelleborg.cz
Integra Liberec, a.s.	Liberec 33 - Machtín	25 - 49	Building of complete constructions or parts thereof; civil engineering	787	www.integra-liberec.cz
KSM Castings CZ, a.s.	Hrádek nad Nisou	200 - 249	Letting of own property	782	
DGS Druckguss Systeme, s.r.o.	Liberec IX - Janův Důl	200 - 249	Aluminium production	779	www.dgs-druckguss.com





## DISTRICT SEMILY

### BASIC DATA

Land Area	699 km <sup>2</sup>
-----------	---------------------

### TOWNS WITH POPULATION OVER 5,000

Turnov	14,509	Lomnice nad Popelkou	5,840
Semily	8,944	Jilemnice	5,715

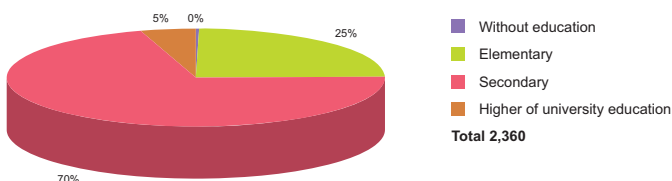
Source: Czech Statistical Office

### ACTUAL SITUATION ON LABOUR MARKET

Population	74,701
Percentage in the total population of Czech Republic (%)	17.1
Population density (person/km <sup>2</sup> )	106.9
Workforce	37,294
Number of job seekers	3,347
Unemployment rate (%)	8.8

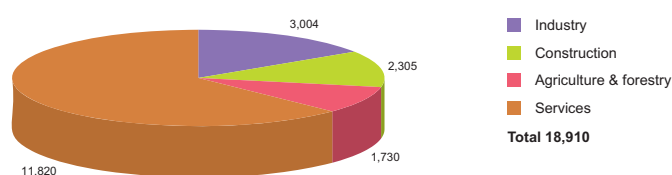
Source: Czech Statistical Office, Ministry of Labour and Social Affairs

### NUMBER OF JOB SEEKERS ACCORDING TO EDUCATION



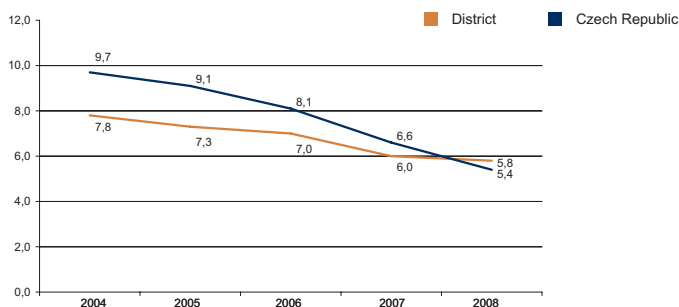
Source: Ministry of Labour and Social Affairs

### NUMBER OF ECONOMIC UNITS ACCORDING TO PREVAILING ACTIVITY



Source: Czech Statistical Office

### UNEMPLOYMENT - 5 YEAR TREND (%/YEAR)



Source: Czech Statistical Office

### FOREIGN DIRECT INVESTMENT

	FDI (CZK)	FDI (EUR)
Semily	5 362 508	201 447
CR (total)	2 032 111 185	76 337 761
Prague	1 049 062 899	39 408 824
Liberec Average	13 168 873	494 698

Source: Czech National Bank

### IMPORTANT COMPANIES IN THE DISTRICT ACCORDING TO TURNOVER

Name of company	Location	Employees	Activity (Sector)	Turnover	www
Sklostroj Turnov CZ, s.r.o.	Turnov	250 - 499	Manufacture of other special purpose machinery and equipment	2 471	www.sklostroj.cz
Grupo Antolin Turnov, s.r.o.	Turnov	250 - 499	Manufacture of plastic components for productive consumption	2 383	www.grupoantolin.com
Cutisin, s.r.o.	Jilemnice - Hrabačov	1000 - 1499	Manufacture of plastic plates, sheets, tubes and profiles	1 878	www.cutisin.cz
Ontex CZ, s.r.o.	Turnov - Daliměřice	500 - 999	Manufacture of household and sanitary goods and of toilet requisites	1500 mil. and more	www.ontex.cz
Mehler Technologies, s.r.o.	Lomnice nad Popelkou	200 - 249	Preparation and spinning of textile fibres	1 111	
Technolen technický textil a. s.	Lomnice nad Popelkou	500 - 999	Silk-type weaving	1 066	www.technolen.cz
Kamax s. r. o.	Turnov	n/a	Manufacture of fasteners, screw machine products, chain and springs	1000 - 1499 mil.	www.kamax.cz
Mehler Engineered Products, s.r.o.	Jilemnice	200 - 249	Letting of own property	635	mep.technolen.cz
Samohyl, a.s.	Lomnice nad Popelkou	100 - 199	Wholesale of pharmaceutical goods	500 - 999 mil.	www.samohyl.cz
Kontakt - služby motoristům, s.r.o.	Turnov	20 - 24	Wholesale of chemical products	500 - 999 mil.	www.kontaktcz.cz
Jilos Horka, s.r.o.	Horka u Staré Paky	100 - 199	Manufacture of wooden containers	500 - 999 mil.	www.jilos.cz
ČSAD Semily, a.s.	Semily - Podmoklice	250 - 499	Municipal mass transport	481	www.csadsm.cz
Trevos, a.s.	Turnov - Mašov	100 - 199	Manufacture of lighting equipment and electric lamps	440	www.trevos.cz
ZEA Sedmihorky, s.r.o.	Karlovice - Roudný	n/a	Manufacture of prepared animal feeds	418	www.zea.cz
Trevos Košťálov, s.r.o.	Košťálov	100 - 199	Manufacture of man-made fibres	418	www.trevos-kostalov.cz
Hybler Textil, s.r.o.	Semily - Podmoklice	250 - 499	Retail sale in non-specialized stores	405	www.hybler.cz
Hybler, s.r.o.	Semily - Podmoklice	500 - 999	Cotton-type weaving	382	www.hybler.cz
Granát, družstvo umělecké výroby, Turnov	Turnov	250 - 499	Manufacture of jewellery and related articles n.e.c.	317	www.granat-cz.com
Šroubárna Turnov, a.s.	Turnov	200 - 249	Manufacture of fasteners, screw machine products, chain and springs	316	www.sroubtu.cz
Hilding Anders Česká republika, a.s.	Roztoky u Jilemnice	50 - 99	Freight transport by road	311	www.tropico-plus.com