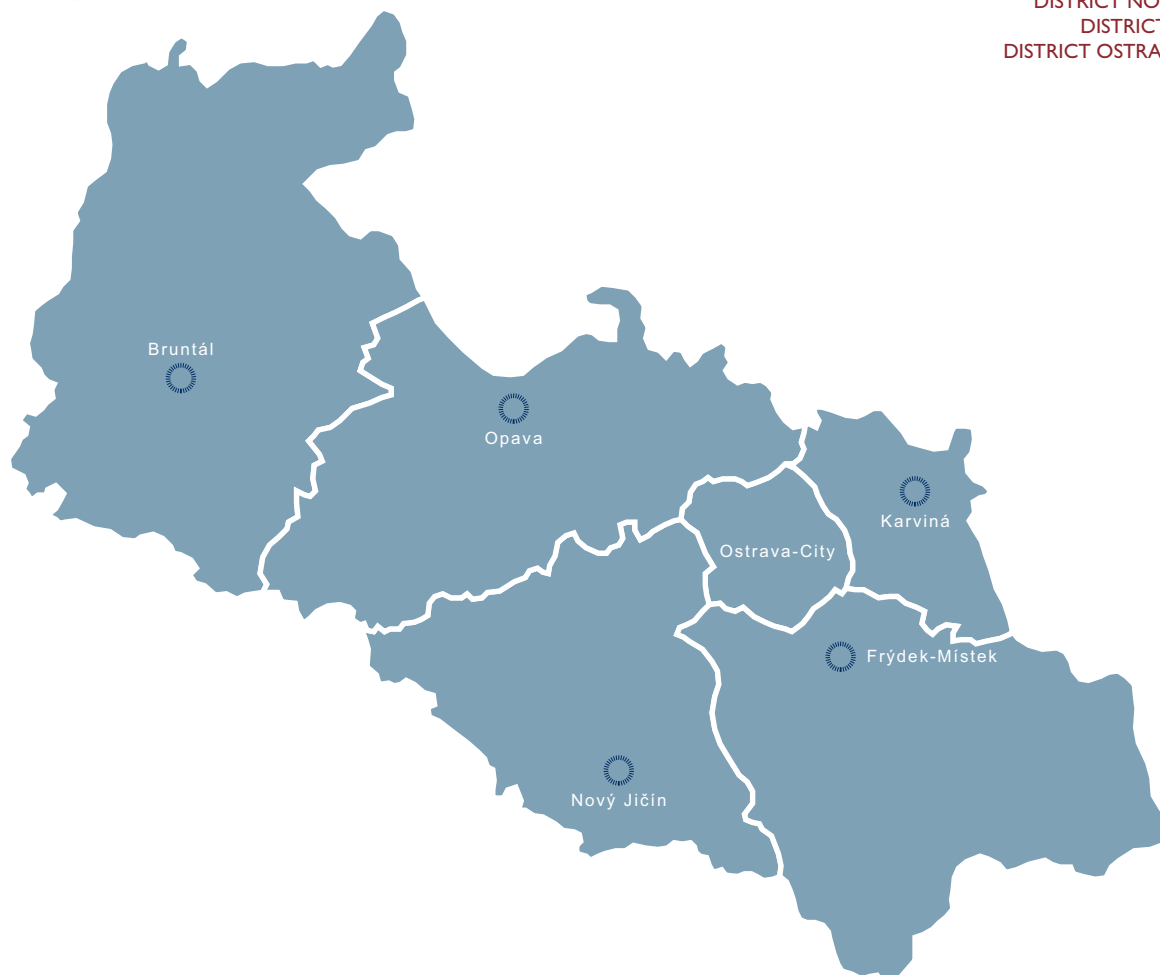


MORAVIA-SILESIA REGION

DISTRICT BRUNTÁL
 DISTRICT FRÝDEK-MÍSTEK
 DISTRICT KARVINÁ
 DISTRICT NOVÝ JIČÍN
 DISTRICT OPAVA
 DISTRICT OSTRAVA-CITY



ABOUT REGION

The Moravia-Silesia Region lies in northern Moravia along the Polish and Slovak borders. Its other neighbors are the regions of Olomouc and Zlín. Moravia-Silesia is divided among six districts: Bruntal, Frýdek-Místek, Karvina, Nový Jičín, Opava and Ostrava. Its area is 5,427 km² or 6.9 % of the national territory, making it the 6th largest region in the country.

Moravia-Silesia is the most populated region in Czech Republic. As of H1 2009 there were 1 250 262 inhabitants which is around 12% of the population of the Czech Republic. Inhabitants are concentrated in rather large towns and cities; therefore the region is highly urbanized. Ostrava, the regional capital with a population of 315,901 is the third largest city in the Czech Republic. There are 31 towns and cities with populations exceeding 5,000 in the region.

There are three protected landscape areas in the region, Jeseníky, Poodří and Beskydy (the largest protected landscape area in the Czech Republic). There are downhill slopes, cross country skiing tracks and hiking tracks in sufficient quantity in the Jeseníky and the Beskydy mountains; tourists are going there in all seasons.

There are three urban sanctuaries in Moravia-Silesia: Nový Jičín, Příbor and Štramberk. The most visited castles are Hradec nad Moravicí, Kravaře, Sovinec and Hukvaldy. None of the region's landmarks are registered on the UNESCO list of world heritage but the complex of former mines in Ostrava is on a list of candidates. There are three universities in Moravia-Silesia. Vysoká škola báňská-Technická univerzita Ostrava (a mining uni-

versity, VŠB-Technical university of Ostrava) with seven colleges.

New specializations are being added to traditional studies of this region (mining, geology, metallurgy), including nanotechnologies and mechatronics. Ostravská univerzita (OU) offers studies in both natural sciences and humanities; also pedagogy and art. Slezská univerzita (Silesian University - SU) is divided between Opava and Karviná. Philosophy and natural science is studied in Opava, the business and commerce college is seated in Karvina. There is a similarly oriented Vysoká škola podnikání (Business University) in Ostrava.

Moravia-Silesia Region is an area with a long industrial tradition. The basic sector of activities here consists of metallurgy, mining, energy and heavy industry. Chemistry and electronics industries are other important fields of business. A high number of cluster initiatives are a phenomenon typical for Moravia-Silesia. The most developed clusters are in the fields of renewable sources of energy, machinery, car making and wood working. New technological clusters were founded in the construction industry, ICT and selected specializations of the chemical industry.

The region's potential is in the rich supplies of quality raw materials for the energy and the construction industry as well as a plentitude of qualified workers for selected industries. There is the second largest national airport in the region and two modern railway corridors. Local life environment has been improving substantially, and mountain areas are suitable for further development of tourism in all seasons and cycling.

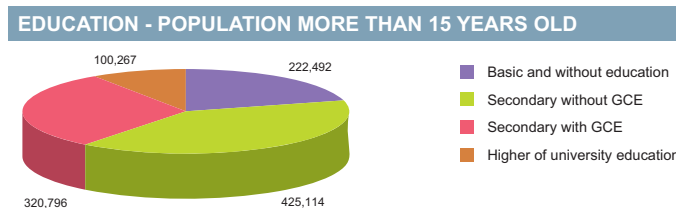
| BASIC DATA | |
|------------|-----------------------|
| Land Area | 5,427 km ² |

| ACTUAL SITUATION ON LABOUR MARKET | |
|--|-----------|
| Population | 1,250,262 |
| Percentage in the total population of Czech Republic (%) | 12.0 |
| Population density (person/km ²) | 230.4 |
| Workforce | 641,428 |
| Number of job seekers | 71,405 |
| Unemployment rate (%) | 10.8 |

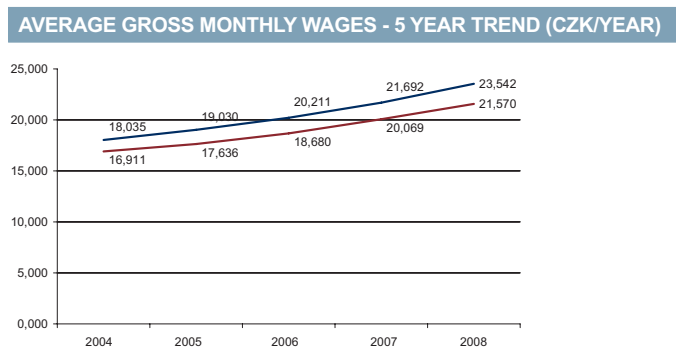
Source: Czech Statistical Office, Ministry of Labour and Social Affairs

| NUMBER OF ECONOMIC UNITS ACCORDING TO PREVAILING ACTIVITY | |
|---|----------------|
| Total | 240,486 |
| Industry | 29,875 |
| Construction | 25,671 |
| Agriculture & forestry | 12,005 |
| Services | 171,570 |

Source: Czech Statistical Office



Source: Czech Statistical Office



Source: Czech Statistical Office

| GDP BY REGIONS | | | | |
|------------------------------------|----------|----------|------------|-----------|
| Region | TOTAL | | Per capita | |
| | mln. CZK | mln. EUR | Total CZK | Total EUR |
| Moravia-Silesia | 358 031 | 14 355 | 286 580 | 10 321 |
| Average GDP for Czech regions | 252 161 | 10 110 | 341 989 | 13 711 |
| Share in GDP of the Czech Republic | 10% | | | |

Source: Czech Statistical Office

| AVERAGE GROSS MONTHLY WAGES - 5 YEAR TREND | | | | | | | | | | |
|--|--------|-----|--------|-----|--------|-----|--------|-----|--------|-----|
| Year | 2004 | | 2005 | | 2006 | | 2007 | | 2008 | |
| | CZK | EUR | CZK | EUR | CZK | EUR | CZK | EUR | CZK | EUR |
| Moravia-Silesia | 16,911 | 530 | 17,636 | 592 | 18,680 | 659 | 20,069 | 723 | 21,570 | 865 |
| Average for Czech Republic | 18,035 | 565 | 19,030 | 639 | 20,211 | 713 | 21,692 | 781 | 23,542 | 944 |

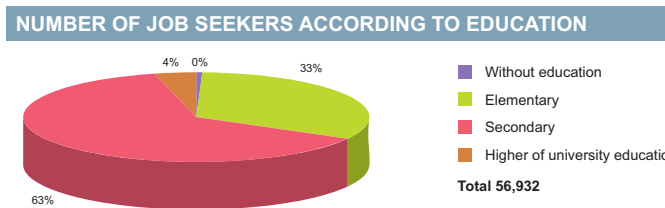
Source: Czech Statistical Office

| ADMINISTRATIVE BREAKDOWN | |
|--------------------------|-----|
| Number of districts | 6 |
| Number of municipalities | 299 |
| of that, number of towns | 40 |

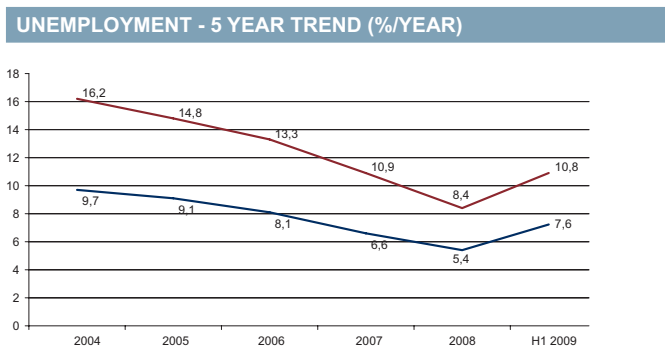
Source: Czech Statistical Office

| NUMBER OF EMPLOYEES AND GROSS MONTHLY WAGES IN MANUFACTURING ACCORDING TO NACE CLASSIFICATION | | |
|---|---------------------|-------------|
| | Number of employees | Wages (EUR) |
| Manufacturing | 105,311 | 925 |
| Man. of food products, beverages and tobacco products | 4,351 | 672 |
| Man. of chemical, chemical products, pharmaceuticals, and chemical fibres | 3,139 | 1,013 |
| Man. of rubber and plastic products | 5,847 | 717 |
| Man. of basic metals and fabricated metal products | 35,913 | 1,004 |
| Man. and repairs of machinery and equipment | 15,454 | 917 |
| Man. of electrical and optical equipment | 7,343 | 1,024 |
| Man. of transport equipment | 21,468 | 933 |

Source: Czech Statistical Office



Source: Ministry of Labour and Social Affairs



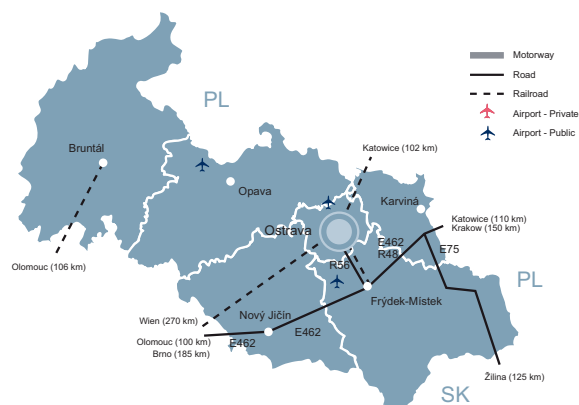
Source: Czech Statistical Office

| FOREIGN DIRECT INVESTMENT | | |
|---------------------------|---------------|------------|
| Region | FDI (CZK) | FDI (EUR) |
| min. | 17 940 192 | 673 937 |
| Moravia-Silesia | 164 500 764 | 6 179 593 |
| max. | 1 049 062 899 | 39 408 824 |
| Average | 145 150 799 | 5 452 697 |

Source: Czech National Bank

| LIST OF AIRPORTS | | | |
|------------------------|----------------|-----------------------|-----------------------------|
| | Specification | | |
| | Public/Private | Civil/Military/Varied | International/Intranational |
| Frydlant nad Ostravicí | Public | Civil | Intranational |
| Krnov | Public | Civil | Intranational |
| Ostrava Mošnov | Public | Civil | International |
| Zábřeh | Public | Civil | Intranational |

Source: Ministry of Transport, Aerobaze.cz



| SCHOOL SYSTEM | | | |
|--------------------------|-------------------|--------------------|---------------------|
| | Number of schools | Number of students | Number of graduates |
| Secondary schools | | | |
| Technical fields | n/a | 20 604 | 5 158 |
| Economic fields | n/a | 19 007 | 4 739 |
| ICT fields | n/a | 5 732 | 1 476 |
| Higher schools | | | |
| Technical fields | n/a | 125 | 37 |
| Economic fields | n/a | 1 408 | 280 |
| ICT fields | n/a | 22 | 13 |
| Universities | | | |
| Technical fields | 3 | 15 212 | 2 823 |
| Economic fields | 4 | 13 154 | 3 049 |
| ICT fields | 4 | 5 580 | 1 326 |

Source: Institute for Information on Education

| LABOUR OFFICE | | | | |
|---------------|---|-------------|-------------|------------------------|
| City | Address | Phone | Fax | E-mail |
| Bruntál | Květná č.p. 1457/64, 792 01 Bruntál 1 | 554 705 111 | 554 712 773 | bruntal@br.mpsv.cz |
| Frýdek-Místek | Na Pořičí 3510, 738 01 Frýdek-Místek 1 | 950 113 111 | 558 631 409 | posta@fm.mpsv.cz |
| Karviná | tř. Osvození 1388/60a, 735 06 Karviná 6 | 950 126 111 | 596 311 948 | sekretariat@ka.mpsv.cz |
| Nový Jičín | Msgr. Šrámka 1030/8, 741 01 Nový Jičín 1 | 950 139 111 | 556 710 020 | posta@nj.mpsv.cz |
| Opava | Bochenkova 2712/4, 746 01 Opava 1 | 553 608 111 | 553 608 110 | posta.up@op.mpsv.cz |
| Ostrava-city | 30. dubna 3130/2c, 702 00 Ostrava 2 | 950 143 511 | 950 143 537 | posta.up@ot.mpsv.cz |

Source: Ministry of Labour and Social Affairs

| SELECTED CZECHINVEST PROJECTS IN THE REGION | | | | | |
|--|----------------------------|--------------------------------------|----------------|---|------|
| Name | Location | Investor | Country | Sector | Year |
| ActiveCall, s.r.o. | Ostrava | Slávia Capital Holding SA | Germany | strategic services centre | 2008 |
| Bang & Olufsen, s.r.o. | Ostrava - Kopřivnice | BANG & OLUFSEN | Denmark | electronics, electrotechnics | 2004 |
| BATZ CZECH, s.r.o. | Frydlant nad Ostravicí | Batz | Spain | manufacture of motor vehicles | 2007 |
| Bontrans Group a.s. | Bohumín | KKCG Industry B.V. | Netherlands | engineering | 2007 |
| Briggs & Stratton (Czech) Power Products, s.r.o. | Ostrava | Briggs & Stratton | USA | engineering | 2006 |
| Brose CZ spol. s r.o. | Vlčovice | Brose III | Germany | manufacture of motor vehicles | 2007 |
| Brose CZ spol. s r.o. | Kopřivnice | Brose International | Germany | manufacture of motor vehicles | 2003 |
| CENTRAL EUROPE AIRCRAFT MAINTENANCE a.s. | Mošnov | CCG | Czech Republic | repair centre | 2006 |
| Česká Spořitelna | Ostrava | Erste Bank | Germany | strategic services centre | 2008 |
| DBC Coatings CZECH s.r.o. | Mošnov | Daihan Bee Chemicals LTD | South Korea | chemistry, pharmacy | 2008 |
| GE Capital (Money) Multiservis, a.s. | Ostrava | GE Capital (Money) Multiservis, a.s. | USA | customer service center | 2004 |
| Grupo Antolin Ostrava s.r.o. | Ostrava | Grupo Antolin Irausa S.A. | Spain | manufacture of motor vehicles | 2008 |
| Hanwha L&C Czech s.r.o. | Frýdek-Místek - Chlebovice | Hanwha L&C Corporation | South Korea | manufacture of motor vehicles | 2008 |
| Hayes Lemmerz Alukola, s.r.o. | Kunčice nad O. | Hayes Lemmerz International | USA | manufacture of motor vehicles | 1998 |
| HSBC | Ostrava | HSBC Bank plc | United Kingdom | customer contact/call centre, data processing | 2007 |
| Hyundai Motor Manufacturing Czech s.r.o. | Nižní Lhoty | Hyundai Motor Company | South Korea | manufacture of motor vehicles | 2006 |
| Ivax Pharmaceuticals s.r.o. | Opava-Komárov | Ivax Pharmaceuticals s.r.o. | Israel | chemistry, pharmacy | 2008 |
| Mayr-Melnhof Säge Paskov s.r.o. | Paskov | Franz Mayer | Austria | paper, wood processing | 2002 |
| OKIN Group, a.s. | Ostrava | OKIN Group, a.s. | Czech Republic | shared services center | 2008 |
| PLAKOR CZECH s.r.o. | Mošnov | ARRK | South Korea | manufacture of motor vehicles | 2006 |
| Shimano Czech Republic, s.r.o. | Karviná | Shimano | Japan | other | 2001 |
| Siemens Automobilové systémy s.r.o. | Frenštát pod Radhoštěm | Siemens Automobilové systémy | Germany | manufacture of motor vehicles | 2000 |
| SUNGWOO HITECH s.r.o. | Ostrava - Hrabová | SUNG WOO HITECH | South Korea | manufacture of motor vehicles | 2005 |
| Sungwoo Hitech s.r.o. | Ostrava - Hrabová | Sungwoo Hitech s.r.o. II | Korea | manufacture of motor vehicles | 2007 |
| Taforge a.s. | Kopřivnice | TATRA a.s. | Czech Republic | manufacture of motor vehicles | 2008 |
| VÍTKOVICE HAMMERING a.s. | Moravská Ostrava | VÍTKOVICE HOLDING a.s. | Czech Republic | engineering | 2008 |

Source: CzechInvest

| IMPORTANT COMPANIES IN THE DISTRICT ACCORDING TO TURNOVER | | | | | | | |
|---|----------------------------|-------------------|---|----------|-----------------------------|----------------------------|--------------------------------------|
| Name of company | Location | Employees | Activity (Sector) | Turnover | Phone | E-mail | WWW |
| Moravia Steel, a.s. | Třinec - Staré Město | 250 - 499 | Wholesale of metals and metal ores | 64 355 | 558 537 001, 558 532 000 | info@moravia-steel.cz | www.trz.cz, www.moravia-steel.cz |
| ArcelorMittal Ostrava a.s. | Ostrava - Kunčice | 10 000 - and more | Manufacture of basic iron and steel and of ferro-alloys | 54 254 | 595 684 130, 595 681 111 | prodej@novahut.cz | www.mittalsteelostrava.com |
| Třinecké Železářny, a. s. | Třinec - Staré Město | 5000 - 9999 | Manufacture of basic iron and steel and of ferro-alloys | 37 060 | 558 538 002, 558 531 111 | marketing@trz.cz | |
| OKD, a.s. | Ostrava - Moravská Ostrava | 10 000 - and more | Mining and agglomeration of hard coal | 23 759 | 596 262 630, 596 261 111 | info@okd.cz | www.okd.cz |
| Evráz Vítkovice Steel, a.s. | Ostrava - Hulváky | n/a | Manufacture of basic iron and steel and of ferro-alloys | 20 478 | 595 956 306, 595 953 971 | jan.polzer@cz.evraz.com | www.vitkovicesteel.com |
| Visteon - Autopal, s.r.o. | Nový Jičín | 4000 - 4999 | Manufacture of parts and accessories for motor vehicles and their engines | 14 434 | 556 780 326, 556 780 590 | orybnika@visteon.com | www.autopal.cz, www.visteon.cz |
| Continental Automotive Systems | Frenštát pod Radhoštěm | 2000 - 2499 | Manufacture of parts and accessories for motor vehicles and their engines | 12 523 | 556 881 111, 556 881 100 | siemens.cz@siemens.com | www.siemens.cz, www.siemensvdo.cz |
| Pharmos, a.s. | Ostrava - Radvanice | 500 - 999 | Wholesale of pharmaceutical goods | 11 724 | 597 575 211, 597 575 217 | info@pharmos.cz | www.pharmos.cz |
| eD` system Czech, a.s. | Ostrava - Mariánské Hory | 100 - 199 | Wholesale of computers, computer peripheral equipment and software | 11 138 | 596 665 111, 597 444 111 | info@edcz.cz | www.edcz.cz |
| Asus Czech, s.r.o. | Ostrava - Hrabová | 500 - 999 | Manufacture of computers and other information processing equipment | 8 933 | 596 766 888, 596 766 111 | | www.asus.cz, www.asusteam.cz |
| ŽDB Group, a.s. | Nový Bohumín | n/a | Letting of own property | 8 462 | 596 081 111, 596 012 552 | info@zdb.cz | www.zdb.cz, www.viadrus.cz |
| TCHAS, spol. s r. o. | Ostrava - Poruba | 1000 - 1499 | General construction of buildings and civil engineering works | 7 574 | 595 690 560, 595 690 511 | paha@tchas.cz | www.tchas.cz |
| OKD, OKK, a.s. | Ostrava-Přivoz | 1000 - 1499 | Manufacture of coke oven products | 7 196 | 596 291 111, 596 292 230 | info@okd.cz | okk.okd.cz, www.okd.cz |
| Hruška, s.r.o. | Ostrava - Martinov | 1500 - 1999 | Wholesale of fruit and vegetables | 6 592 | 596 948 111, 596 948 232 | | hruska.info |
| Ivax Pharmaceuticals, s.r.o. | Opava - Komárov | 1000 - 1499 | Manufacture of basic pharmaceutical products | 6 490 | 553 641 111, 553 642 512 | api@ivax-cz.com | www.ivax-cr.com |
| Finitrading, a.s. | Třinec - Lyžbice | 1 - 5 | Wholesale of metals and metal ores | 6 274 | 558 326 187, 558 326 188 | | |
| Sochorová válcovna TŽ, a.s. | Třinec - Staré Město | 500 - 999 | Manufacture of basic iron and steel and of ferro-alloys | 5 874 | 312 643 034, 312 643 098 | dana.tomasova@trz.cz | www.trz.cz |
| BorsodChem Mchz, s.r.o. | Ostrava - Mariánské Hory | 500 - 999 | Manufacture of other organic basic chemicals | 5 626 | 596 643 221, 596 629 610 | posta@bc-mchz.cz | www.bc-mchz.cz |
| Vitkovice, a.s. | Ostrava - Vítkovice | 200 - 249 | Distribution and trade of electricity | 4 784 | 595 956 273, 595 911 111 | kancelar.paha@vitkovice.cz | www.watrex.com, www.vitkovice.com |
| AL Invest Břidličná, a.s. | Břidličná | 1000 - 1499 | Aluminium production | 4 695 | 554 219 251, 554 222 201 | info@alinvest.cz | www.alinvest.cz |

Source: Albertina Company Monitor

| KNOWLEDGE OF FOREIGN LANGUAGES | | | |
|--------------------------------|----------------------|------------------|----------------------|
| LANGUAGE | ALL SKILLS LEVEL (%) | LANGUAGE | ALL SKILLS LEVEL (%) |
| English | 61.9 | Spanish | 4.2 |
| German | 43.9 | Polish | 48.4 |
| French | 6.7 | Russian | 45.5 |
| Italian | 3.5 | Nordic languages | 1.0 |

Source: Augur Consulting

| LIST OF UNIVERSITIES 2009 | | | | |
|--|-----------------|--|----------------------------|----------|
| Name of school | WWW | Orientation | Titles awarded | Students |
| Newport International University | www.newportu.cz | Variety of programmes | BBA, MBA, DBA, Ph.D. | |
| Ostravská univerzita v Ostravě | www.osu.cz | Variety of programmes | Bc., Mgr., BcA, MgA, Ph.D. | 9 143 |
| Slezská univerzita v Opavě | www.slu.cz | Variety of programmes | Bc., Mgr., Ph.D. | 7 750 |
| Vysoká škola báňská - Technická univerzita Ostrava | www.vsb.cz | Variety of programmes | Bc., Mgr., Ph.D. | 22 308 |
| Vysoká škola podnikání | www.vsp.cz | Informatics, management, internet | Bc., Mgr., Ing. | 3 301 |
| Vysoká škola sociálně-správní, Havířov | www.vsss.cz | Public economics and administration, management and social affairs | Bc. | 170 |

Source: Institute for Information on Education

LIST OF THE BEST OSTRAVA A-CLASS OFFICE PROJECTS

| Project name | EXISTING/PLANNED/UC | Status | Total Office Area (sqm) | Date of completion | Year of Completion |
|-------------------------------------|---------------------|-------------|-------------------------|-----------------------------|--------------------|
| Administrativní centrum ICEC | Existing | Refurbished | 3 000 | 1996 Q2 | 1996 |
| Axis Office Park Ostrava | Existing | New Build | 20 500 | phase development 2006-2007 | 2006-2007 |
| Nová Karolina | Under Construction | New Build | 24 635 | | 2011 |
| Nordica Ostrava | Existing | New Build | 10 619 | 2009 Q1 | 2009 |
| The Orchard | Existing | New Build | 33 305 | phase development 2007-2009 | 2007-2009 |
| IQ Ostrava (CTP Office Tower Alpha) | Planned | New Build | 25 000 | | n/a |
| Jindřich Plaza | Planned | New Build | 15 000 | | n/a |

Source: CB Richard Ellis

RENTS IN INDUSTRIAL PREMISES IN CR REGIONS (EUR/sqm/month)

| Region | RENTS (EUR/sqm/month) |
|------------------------|-----------------------|
| Moravia-Silesia Region | 3,0-4,0 |

Note 1: Net effective rents for units ca 4,000 sq m which is average deal size in the market

Note 2: Premises are immediately available only some regions.

Source: CB Richard Ellis

PRIME RENTS IN OFFICE PREMISES IN OSTRAVA (EUR/sqm/month)

| Region | RENTS (EUR/sqm/month) |
|---------|-----------------------|
| Ostrava | 10.50-12.50 |

„Prime rent definition: Prime Rent – typical 'achievable' open market headline rent (can be hypothetical) for a unit of standard size commensurate with demand in each location, of highest quality and specification and in the best location in a market at the survey date. It does not need to be identical to any of the transactions, particularly if the deal flow is very limited or made up of unusual one-off deals“

Source: CB Richard Ellis

PRIME RENTS IN SHOPPING CENTRES (EUR/sqm/month)

| Region | RENTS (EUR/sqm/month) |
|------------------------|-----------------------|
| Moravia-Silesia Region | 20-38 |

Note: for units ca 100 sqm.

Source: CB Richard Ellis

INDUSTRIAL PARKS IN THE CZECH REPUBLIC

| Project | Region | City/ Town | Total Area (warehouse + office) | Year of Completion |
|-------------------------------|-----------------|------------|---------------------------------|--------------------|
| CTPark Nový Jičín | Moravia-Silesia | Nový Jičín | 23 785 | 2009 |
| CTPark Ostrava | Moravia-Silesia | Ostrava | 144 063 | 2006-2009 |
| ProLogis Park Ostrava | Moravia-Silesia | Ostrava | 66 119 | 2008 |
| Tulipan Park Logistics Centre | Moravia-Silesia | Ostrava | 10 950 | 2009 |

Note: Date of completions highlighted in red - we don't know the beginning of completion

Source: CB Richard Ellis



TEBODIN
Consultants & Engineers

We offer our services to Czech and international clients from private and public sector:



PROJECT MANAGEMENT

CONSULTANCY → DESIGN & PERMITTING → PROCUREMENT → CONSTRUCTION MANAGEMENT → COMMISSIONING

We are active in the following markets:

- Industrial plants
- Commercial & Residential Buildings
- Process Units & Pipelines
- Infrastructure
- Power & Heat

Branch offices - Prague, Pardubice, Ostrava



www.tebodin.com

info@tebodin.cz

www.tebodin.cz

SELECTED INDUSTRIAL ZONES IN THE MORAVIA-SILESIA REGION

| Industrial zone | Area (ha) |
|--|-----------|
| Brantice | 21,00 |
| Český Těšín - Pod zelenou | 12,00 |
| Dolní Benešov - Moravec | 222,50 |
| Frýdek-Místek - Chlebovice | 12,44 |
| Hladké Životice | 29,80 |
| Hlučín - území pro průmysl a podnikání | 12,97 |
| Horní Suchá - Důl František | 22,00 |
| Karviná - Nové pole | 49,00 |
| Kopřivnice - Průmyslový park | 83,98 |
| Kopřivnice - Vlčovice | 73,40 |
| Krmelín - U hřbitova | 11,13 |
| Nošovice | 269,00 |
| Osoblaha - průmyslová zóna | 21,28 |
| Ostrava - Hrabová | 110,00 |
| Ostrava - Mošnov | 200,00 |
| Paskov | 198,20 |
| Průmyslová zóna Krnov - Červený dvůr | 42,00 |
| Průmyslová zóna Opava - Vávrovce | 15,00 |
| Studénka- průmyslová zóna | 26,90 |
| Třinec - Baliny | 22,00 |
| Venkovská průmyslová zóna Třanovice | 20,03 |
| Vitkov - Průmyslová zóna | 17,50 |

Source: CzechInvest

IMPORTANT CONTACTS IN THE REGION

Regional Council

28. října 117, 70218 Moravská Ostrava
tel.: +420 595 622 222
fax: +420 595 622 126
Email: posta@kr-moravskoslezsky.cz, epodatelna@kr-moravskoslezsky.cz
URL: www.kr-moravskoslezsky.cz

City Hall – Ostrava

Prokešovo náměstí 1803/8, 729 30 Ostrava
tel.: +420 599 444 444
fax: +420 599 442 386
Email: posta@ostrava.cz
URL: www.ostrava.cz

CzechInvest - Regional Office

Nádražní 923/118, 702 00 Ostrava
tel.: +420 595 198 480-4
fax: +420 595 198 488
Email: ostrava@czechinvest.org
URL: www.czechinvest.org
Contact persons: Ing. Lenka Matysková,
Mgr. Pavel Dominik

Regional Operational Programme Moravia-Silesia

Hrabáková 1/1861, 702 00 Ostrava
tel.: +420 552 303 546
Email: info@dobra-rada.cz
URL: www.m-moravskoslezsko.cz

Regional Development Agency

Na Jízdámě 7, 702 00 Ostrava 1
tel.: +420 595 691 211
fax: +420 595 691 204
Email: arr@arr.cz
URL: www.arr.cz

Business and Innovation Centre - BIC Ostrava s.r.o.

Mostárenská 1156/38, 703 00 Ostrava-Vitkovice
tel.: +420 595 957 458, +420 731 187 857
fax: +420 595 956 751
Email: bicova@bicova.cz
URL: www.bicova.cz

RPIC-VIP - counselling and project management

Výstavní 2224/8, 709 00 Ostrava - Mariánské Hory
tel.: +420 596 616 794, +420 606 748 429
fax: +420 596 626 917
Email: rpivicvip@rpic-vip.cz
URL: www.rpic-vip.cz

CzechTrade - Regional Information

Place - Ostrava
Výstavní 8, 709 00 Ostrava-Mariánské Hory
tel.: +420 597 479 322, +420 724 613 973
fax: +420 597 479 324
Email: monika.nemcova@czechtrade.cz
URL: www.czechtrade.cz

Chamber of Commerce of Moravia-Silesian Region

Výstavní 2224/8, 709 00 Ostrava - Mariánské Hory
tel.: +420 597 479 333
fax: +420 597 479 324
Email: info@khkmsk.cz
URL: www.khkmsk.cz

Enterprise Europe Network

Výstavní 2224/8, 709 00 Ostrava-Mariánské Hory
tel.: +420 597 479 335
Email: e.bergerova@khkmsk.cz
URL: www.khkmsk.cz

UTILITIES**GAS**

RWE SMP Net s.r.o.
Plynární 420/3, 702 72 Ostrava
tel.: 595 142 901
fax: 595 142 909
Email: info@rwe-smpnet.cz
URL: www.rwe-smpnet.cz

ELECTRICITY

ČEZ a.s.
28. října 3123/152, 709 02 Ostrava - Mor. Ostrava
tel.: 840 840 840, 596 671 111
fax: 596 612 388
Email: cez@cez.cz
URL: www.cez.cz

WATER AND SEWER SYSTEM

Ostravské vodárny a kanalizace, a.s.
Nádražní 28/3114, 702 00 Ostrava - Mor. Ostrava
tel.: 597 475 111, 595 152 111
Email: info@ovak.cz
URL: www.ovak.cz

Severomoravské vodovody a kanalizace, a.s.

28. října 169, 709 45 Ostrava
tel.: 596 697 111
fax: 596 624 205
Email: smvak@smvak.cz
URL: www.smvak.cz

HEAT

Dalkia Česká republika, a.s.
28. října 3123/152, 709 74 Ostrava
tel.: 596 609 111
fax: 596 609 300
Email: info@dalkia.cz
URL: www.dalkia.cz

Distep, a.s.

Ostravská 961, 738 01 Frýdek-Místek
tel.: 558 442 111, 558 442 119
fax: 558 442 141
Email: posta@distep.cz
URL: www.distep.cz

Distribuce tepla Třinec, a.s.

Máchova 1131, 739 61 Třinec
tel.: 558 333 779
fax: 558 333 779
Email: dttas@seznam.cz

Dotep - CT, s.r.o.

K. Čapka 373/15, 741 01 Nový Jičín
tel.: 556 710 275
fax: 556 710 274
Email: dotep@dotep.cz
URL: www.dotep.cz

Haviřovská teplotárenská společnost, a.s.

Konzumní 298/6a, 736 01 Haviřov-Šumbark
tel.: 596 411 906
fax: 596 411 960
Email: hts@htsas.cz
URL: www.htsas.cz

OPATHERM, a.s.

Horní náměstí 283/58, 746 01 Opava
tel.: 553 777 555
fax: 553 623 828
Email: office@opatherm.mvv.cz

Teplo Bruntál, a.s.

Šmilovského 659/6, 792 01 Bruntál
tel.: 554 774 224
fax: 554 774 223
URL: www.teplobr.cz

Teplo Vratimov spol. s r.o.

Frýdecká 853/57, 739 32 Vratimov
tel.: 596 732 640

Teplo Hlučín spol. s r.o.

Čs. Armády 1263/32, 748 01 Hlučín
tel.: 595 020 501
Email: teplohlucin@teplohlucin.cz

DISTRICT BRUNTÁL



BASIC DATA

| | |
|-----------|-----------------------|
| Land Area | 1,549 km ² |
|-----------|-----------------------|

TOWNS WITH POPULATION OVER 5,000

| | | | |
|---------|--------|--------------------|-------|
| Krnov | 25,211 | Rýmařov | 8,790 |
| Bruntál | 17,494 | Vrbno pod Pradědem | 5,825 |

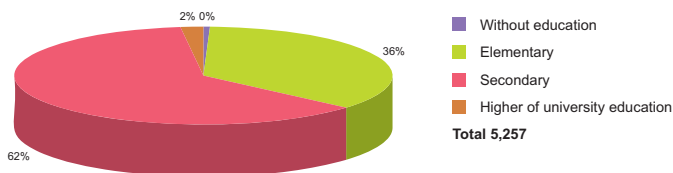
Source: Czech Statistical Office

ACTUAL SITUATION ON LABOUR MARKET

| | |
|--|--------|
| Population | 97,853 |
| Percentage in the total population of Czech Republic (%) | 7.8 |
| Population density (person/km ²) | 63.2 |
| Workforce | 51,068 |
| Number of job seekers | 7,105 |
| Unemployment rate (%) | 13.6 |

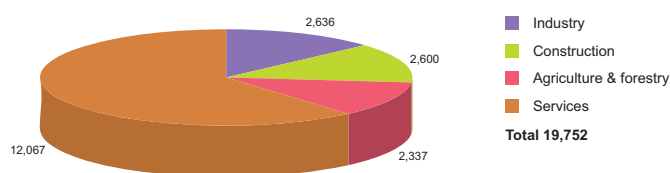
Source: Czech Statistical Office, Ministry of Labour and Social Affairs

NUMBER OF JOB SEEKERS ACCORDING TO EDUCATION



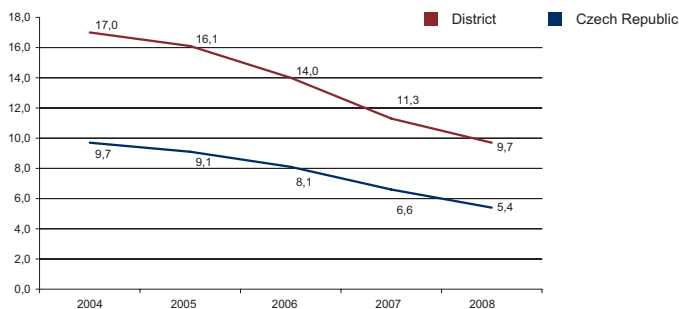
Source: Ministry of Labour and Social Affairs

NUMBER OF ECONOMIC UNITS ACCORDING TO PREVAILING ACTIVITY



Source: Czech Statistical Office

UNEMPLOYMENT - 5 YEAR TREND (%/YEAR)



Source: Czech Statistical Office

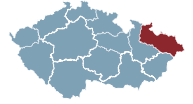
FOREIGN DIRECT INVESTMENT

| | FDI (CZK) | FDI (EUR) |
|-------------------------|---------------|------------|
| Bruntál | 3 462 873 | 130 085 |
| CR (total) | 2 032 111 185 | 76 337 761 |
| Prague | 1 049 062 899 | 39 408 824 |
| Moravia-Silesia Average | 27 416 794 | 1 029 932 |

Source: Czech National Bank

IMPORTANT COMPANIES IN THE DISTRICT ACCORDING TO TURNOVER

| Name of company | Location | Employees | Activity (Sector) | Turnover | www |
|---------------------------------------|-------------------------------|-------------|---|--------------------|-----------------------------|
| AL Invest Břidličná, a.s. | Břidličná | 1000 - 1499 | Aluminium production | 4 695 | www.alinvest.cz |
| Kofola, a.s. | Krnov - Pod Bezručovým vrchem | n/a | Letting of own property | 3 141 | www.kofola.cz |
| Advanced Plastics, s.r.o. | Vrbno pod Pradědem | 500 - 999 | Manufacture of plastic products | 1 582 | www.advplast.cz, www.lph.cz |
| Marek Vlasák ing. - eMsoft | Krnov - Pod Bezručovým vrchem | n/a | Accounting, book-keeping and auditing activities; tax consultancy | 1500 mil. and more | www.emsoft.cz |
| Karla, spol. s r.o. | Bruntál | 100 - 199 | Wholesale of metals and metal ores | 1 235 | www.karla.cz |
| Alfa Plastik, a.s. | Bruntál | n/a | Manufacture of plastic packing goods | 1 092 | www.alfaplastik.cz |
| RD Rýmařov s. r. o. | Rýmařov | 500 - 999 | Construction of buildings n.e.c. | 1 006 | www.rdrymarov.cz |
| Alfun, a.s. | Bruntál | 50 - 99 | Wholesale of metals and metal ores | 1 578 | www.alfun.cz, www.alfun.net |
| PVO Klub Rýmařov, v.o.s. | Rýmařov | n/a | Restaurants | 756 | |
| Krnovské opravny a strojirny, s.r.o. | Krnov - Pod Bezručovým vrchem | 500 - 999 | Manufacture of railway and tramway locomotives and rolling stock | 674 | www.kos.cz |
| Copreci CZ, s.r.o. | Dvorce | 100 - 199 | Retail sale in non-specialized stores | 668 | |
| Vladimír Erben - EKO Metalrecycling | Rýmařov | 50 - 99 | Retail sale in non-specialized stores | 500 - 999 mil. | www.erben-ekometal.cz |
| Sdružené zdravotnické zařízení Krnov, | Krnov - Pod Bezručovým vrchem | 1000 - 1499 | Hospital activities | 500 - 999 mil. | www.szzkrnov.cz |
| Miko Trade, s.r.o. v likvidaci | Bruntál | n/a | Collection and treatment of other waste | 500 - 999 mil. | www.mikotrade.cz |
| Den Braven Czech and Slovak, s.r.o. | Úvalno | 50 - 99 | Wholesale of chemical products | 500 - 999 mil. | www.denbraven.cz |
| Katr, a.s. | Stará Ves | 250 - 499 | Sawmilling and planing of wood; impregnation of wood | 419 | www.katr.biz |
| Segezha Packaging, s.r.o. | Úvalno | 100 - 199 | Manufacture of other articles of paper and paperboard n.e.c. | 414 | www.korsnas-packaging.cz |
| Alcom Alval, s.r.o. | Bruntál | 20 - 24 | Precious metals production | 380 | www.alcomalval.com |
| Santa - Trans, s.r.o. | Krnov - Pod Cvilínem | 100 - 199 | Freight transport by road | 362 | |
| Hobes, s.r.o. | Horní Benešov - Luhy | 200 - 249 | Treatment and coating of metals | 361 | www.hobes.cz |



DISTRICT FRÝDEK-MÍSTEK

BASIC DATA

| | |
|-----------|-----------------------|
| Land Area | 1,273 km ² |
|-----------|-----------------------|

TOWNS WITH POPULATION OVER 5,000

| | | | |
|-----------------------|--------|-----------|-------|
| Frýdek-Místek | 59,233 | Jablunkov | 5,692 |
| Třinec | 37,657 | Bystřice | 5,181 |
| Frýdlant nad Oslavicí | 9,652 | | |

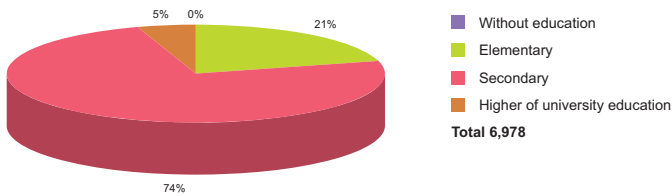
Source: Czech Statistical Office

ACTUAL SITUATION ON LABOUR MARKET

| | |
|--|---------|
| Population | 211,041 |
| Percentage in the total population of Czech Republic (%) | 16.9 |
| Population density (person/km ²) | 165.8 |
| Workforce | 107,806 |
| Number of job seekers | 8,940 |
| Unemployment rate (%) | 8.0 |

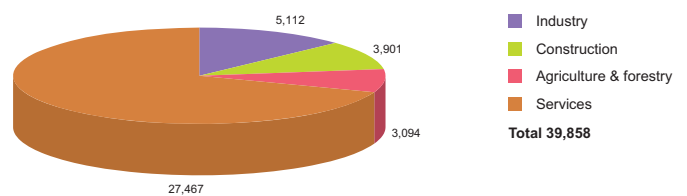
Source: Czech Statistical Office, Ministry of Labour and Social Affairs

NUMBER OF JOB SEEKERS ACCORDING TO EDUCATION



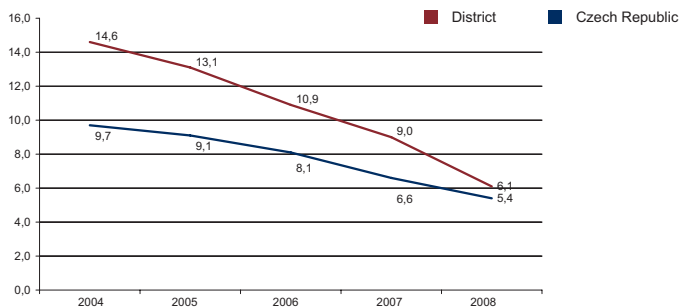
Source: Ministry of Labour and Social Affairs

NUMBER OF ECONOMIC UNITS ACCORDING TO PREVAILING ACTIVITY



Source: Czech Statistical Office

UNEMPLOYMENT - 5 YEAR TREND (%/YEAR)



Source: Czech Statistical Office

FOREIGN DIRECT INVESTMENT

| | FDI (CZK) | FDI (EUR) |
|-------------------------|---------------|------------|
| Frýdek-Místek | 24 207 757 | 909 382 |
| CR (total) | 2 032 111 185 | 76 337 761 |
| Prague | 1 049 062 899 | 39 408 824 |
| Moravia-Silesia Average | 27 416 794 | 1 029 932 |

Source: Czech National Bank

IMPORTANT COMPANIES IN THE DISTRICT ACCORDING TO TURNOVER

| Name of company | Location | Employees | Activity (Sector) | Turnover | www |
|------------------------------------|-----------------------|-------------|---|--------------------|--------------------------------------|
| Moravia Steel, a.s. | Třinec - Staré Město | 250 - 499 | Wholesale of metals and metal ores | 64 355 | www.trz.cz, www.moravia-steel.cz |
| Třinecké Železářny, a. s. | Třinec - Staré Město | 5000 - 9999 | Manufacture of basic iron and steel and of ferro-alloys | 37 060 | |
| Finitrading, a.s. | Třinec - Lyžbice | 1 - 5 | Wholesale of metals and metal ores | 6 274 | |
| Sochorová válcovna TŽ, a.s. | Třinec - Staré Město | 500 - 999 | Manufacture of basic iron and steel and of ferro-alloys | 5 874 | www.trz.cz |
| Biocel Paskov, a.s. | Paskov | 250 - 499 | Manufacture of pulp | 4 674 | www.biocel.cz |
| Manip Rakovo, s.r.o. | Jablunkov | n/a | Agents involved in the sale of timber and building materials | 4 081 | www.manip.sk |
| Válcovny Plechu, a.s. | Frýdek | 500 - 999 | Manufacture of basic iron and steel and of ferro-alloys | 3 608 | www.vpfm.cz |
| Moravia Energo, a.s. | Třinec - Lyžbice | 10 - 19 | Distribution and trade of electricity | 3 369 | www.moraviaenergo.cz |
| Mayr - Melnhof Holz Paskov, s.r.o. | Stafič | 200 - 249 | Sawmilling and planing of wood; impregnation of wood | 3 347 | www.mm-holz.com |
| Lumius, spol. s r.o. | Frýdek | 10 - 19 | Distribution and trade of electricity | 2 793 | www.lumius.cz |
| Energetika Třinec, a.s. | Třinec - Staré Město | 250 - 499 | Steam and hot water supply | 2 327 | www.etas.trz.cz |
| Arcimpex, s.r.o. | Sviadnov | 50 - 99 | Wholesale of metals and metal ores | 1 552 | www.arcimpex.cz |
| Strojmy Třinec, a.s. | Třinec - Staré Město | 1000 - 1499 | Manufacture of machinery for metallurgy | 1 509 | www.sv.trz.cz, www.strojmytrinec.cz |
| Walmart, a.s. | Třinec - Oldřichovice | 250 - 499 | Manufacture of pharmaceutical preparations | 1500 mil. and more | www.walmart.cz |
| Slévárny Třinec, a.s. | Třinec - Staré Město | 500 - 999 | Casting of iron | 1 356 | slevarny.trz.cz, www.slevarny.trz.cz |
| JAP Trading, s.r.o. | Třinec - Karpentná | 50 - 99 | Wholesale of metals and metal ores | 1 246 | www.jap.cz, www.jap.cz/spedex |
| PR market, s.r.o. | Třinec - Lyžbice | 500 - 999 | Retail sale in non-specialized stores with food, beverages or tobacco | 1 145 | www.pmarket.cz, www.ikoruna.cz |
| Slezan Frýdek - Místek a. s. | Frýdek | 1500 - 1999 | Finishing of textiles | 1000 - 1499 mil. | www.slezanfm.cz |
| Martek Medical, a.s. | Třinec - Kanská | 25 - 49 | Wholesale of pharmaceutical goods | 1000 - 1499 mil. | www.martekmedical.cz |
| Expol Trade, s.r.o. | Frýdek | 25 - 49 | Wholesale of solid, liquid and gaseous fuels and related products | 1000 - 1499 mil. | www.expol.cz |

DISTRICT KARVINÁ



BASIC DATA

| | |
|-----------|---------------------|
| Land Area | 347 km ² |
|-----------|---------------------|

TOWNS WITH POPULATION OVER 5,000

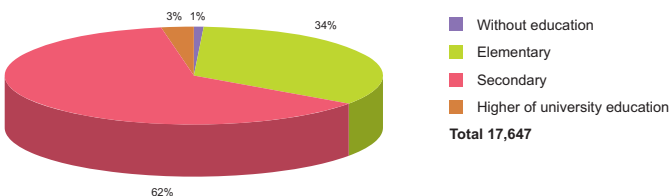
| | | | |
|-------------|--------|---------------------|--------|
| Haviřov | 84,033 | Bohumín | 22,914 |
| Karviná | 62,881 | Petřvald | 7,020 |
| Orlová | 32,918 | Rychvald | 6,875 |
| Český Těšín | 25,633 | Petrovice u Karviné | 5,384 |

ACTUAL SITUATION ON LABOUR MARKET

| | |
|--|---------|
| Population | 274,889 |
| Percentage in the total population of Czech Republic (%) | 22.0 |
| Population density (person/km ²) | 792.2 |
| Workforce | 139,851 |
| Number of job seekers | 19,542 |
| Unemployment rate (%) | 13.7 |

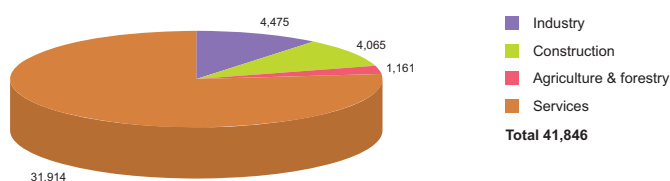
Source: Czech Statistical Office, Ministry of Labour and Social Affairs

NUMBER OF JOB SEEKERS ACCORDING TO EDUCATION



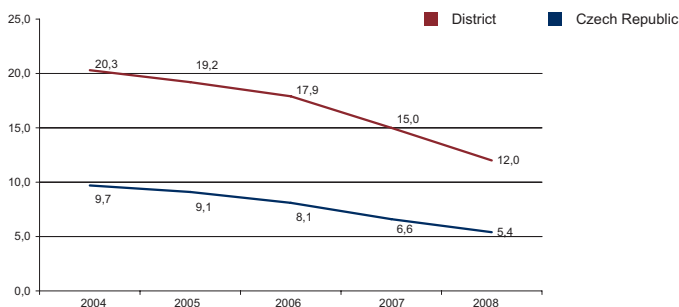
Source: Ministry of Labour and Social Affairs

NUMBER OF ECONOMIC UNITS ACCORDING TO PREVAILING ACTIVITY



Source: Czech Statistical Office

UNEMPLOYMENT - 5 YEAR TREND (%/YEAR)



Source: Czech Statistical Office

FOREIGN DIRECT INVESTMENT

| | FDI (CZK) | FDI (EUR) |
|-------------------------|---------------|------------|
| Karviná | 6 041 952 | 226 970 |
| CR (total) | 2 032 111 185 | 76 337 761 |
| Prague | 1 049 062 899 | 39 408 824 |
| Moravia-Silesia Average | 27 416 794 | 1 029 932 |

Source: Czech National Bank

IMPORTANT COMPANIES IN THE DISTRICT ACCORDING TO TURNOVER

| Name of company | Location | Employees | Activity (Sector) | Turnover | www |
|--|--------------------------------|-------------|---|--------------------|-----------------------|
| ŽDB Group, a.s. | Nový Bohumín | n/a | Letting of own property | 8 462 | www.zdb.cz |
| PCC MORAVA - CHEM s.r.o. | Český Těšín | 25 - 49 | Wholesale of chemical products | 1 879 | |
| Petr Hlaváč | Orlová - Lutyně | n/a | Investigation and security activities | 1500 mil. and more | |
| Lydie Jašková | Karviná - Mizerov | 6 - 9 | Other retail sale in non-specialized stores | 1500 mil. and more | |
| Karimpex, a.s. | Orlová - Poruba | 100 - 199 | Retail sale of automotive fuel | 1500 mil. and more | www.karimpex.cz |
| Equus, s.r.o. | Český Těšín | 50 - 99 | Wholesale of other food, including fish, crustaceans and molluscs | 1500 mil. and more | www.equus.cz |
| Bonatrans Group, a.s. | Nový Bohumín | 1000 - 1499 | Manufacture of railway and tramway locomotives and rolling stock | 1500 mil. and more | www.bonatrans.cz |
| ArcelorMittal Tubular Products | Karviná - Hranice | 500 - 999 | Manufacture of steel tubes | 1500 mil. and more | www.jakl.cz |
| Bekaert Petrovice, s.r.o. | Petrovice u Karviné | 50 - 99 | Manufacture of wire products | 1 297 | www.bekaert.com |
| Mölnlycke Health Care Klinipro, s.r.o. | Karviná - Staré Město | 250 - 499 | Manufacture of cotton-wool and dressing materials | 1000 - 1499 mil. | www.molnlycke.com |
| Lama Plus, s.r.o. | Karviná - Nové Město | n/a | Wholesale of other office machinery and equipment | 1000 - 1499 mil. | www.lama.cz |
| Bekaert Bohumín, s.r.o. | Bohumín - Pudlov | 100 - 199 | Treatment and coating of metals | 1000 - 1499 mil. | www.bekaert.com |
| Kovona System, a.s. | Karviná - Nové Město | 250 - 499 | Manufacture of other office and shop furniture | 969 | www.kovona-system.cz |
| OKD, Rekultivace, a.s. | Haviřov - Prostřední Suchá | 250 - 499 | Demolition and wrecking of buildings; earth moving | 675 | www.okd.cz |
| Shimano Czech Republic, s.r.o. | Karviná - Staré Město | 250 - 499 | Manufacture of bicycles | 654 | |
| POL - Alplex, s.r.o. | Hotel. dům Petrovice u Karviné | 250 - 499 | Demolition and wrecking of buildings; earth moving | 634 | |
| Orfa, a.s. | Orlová - Poruba | 100 - 199 | Advertising | 634 | www.orfa.info |
| Trestles, a.s. | Karviná - Mizerov | 250 - 499 | Manufacture of metal structures and parts of structures | 597 | www.trestles.cz |
| Kovona Karviná, a. s. | Karviná - Nové Město | | Manufacture of builders' carpentry and joinery of metal | 595 | www.kovona-karvina.cz |
| Finidr, s.r.o. | Český Těšín | 250 - 499 | Publishing of books | 579 | www.finidr.cz |



DISTRICT NOVÝ JIČÍN

BASIC DATA

| | |
|-----------|---------------------|
| Land Area | 918 km ² |
|-----------|---------------------|

TOWNS WITH POPULATION OVER 5,000

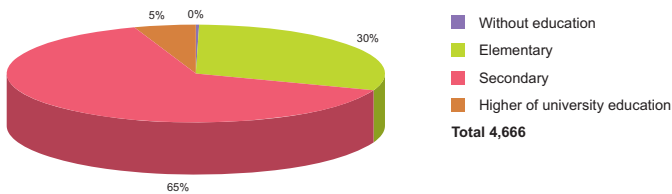
| | | | |
|------------------------|--------|---------|-------|
| Nový Jičín | 26,071 | Příbor | 8,789 |
| Kopřivnice | 23,248 | Bilovec | 7,519 |
| Frenštát pod Radhoštěm | 11,187 | Odry | 7,344 |
| Studénka | 10,220 | Fulnek | 5,980 |

ACTUAL SITUATION ON LABOUR MARKET

| | |
|--|---------|
| Population | 152,512 |
| Percentage in the total population of Czech Republic (%) | 12.2 |
| Population density (person/km ²) | 166.1 |
| Workforce | 78,972 |
| Number of job seekers | 8,429 |
| Unemployment rate (%) | 10.5 |

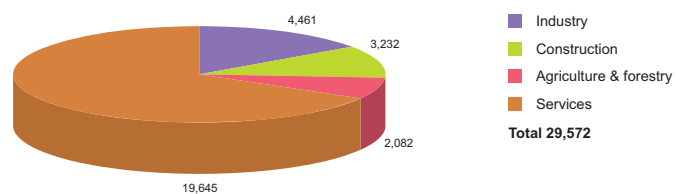
Source: Czech Statistical Office, Ministry of Labour and Social Affairs

NUMBER OF JOB SEEKERS ACCORDING TO EDUCATION



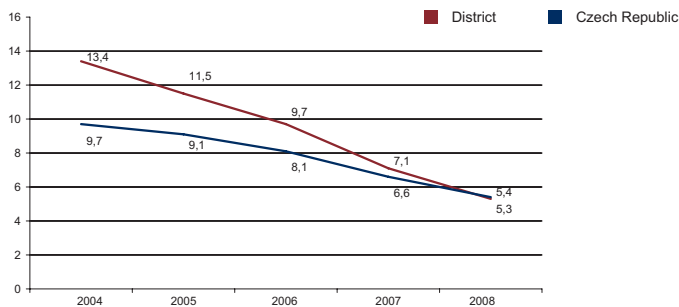
Source: Ministry of Labour and Social Affairs

NUMBER OF ECONOMIC UNITS ACCORDING TO PREVAILING ACTIVITY



Source: Czech Statistical Office

UNEMPLOYMENT - 5 YEAR TREND (%/YEAR)



Source: Czech Statistical Office

FOREIGN DIRECT INVESTMENT

| | FDI (CZK) | FDI (EUR) |
|-------------------------|---------------|------------|
| Nový Jičín | 12 966 760 | 487 106 |
| CR (total) | 2 032 111 185 | 76 337 761 |
| Prague | 1 049 062 899 | 39 408 824 |
| Moravia-Silesia Average | 27 416 794 | 1 029 932 |

Source: Czech National Bank

IMPORTANT COMPANIES IN THE DISTRICT ACCORDING TO TURNOVER

| Name of company | Location | Employees | Activity (Sector) | Turnover | www |
|---|------------------------|-------------|---|--------------------|-----------------------|
| Visteon - Autopal, s.r.o. | Nový Jičín | 4000 - 4999 | Manufacture of parts and accessories for motor vehicles and their engines | 14 434 | www.autopal.cz |
| Continental Automotive Systems | Frenštát pod Radhoštěm | 2000 - 2499 | Manufacture of parts and accessories for motor vehicles and their engines | 12 523 | www.siemens.cz |
| Semperflex Optimit, s.r.o. | Odry | 500 - 999 | Manufacture of other rubber products | 2 240 | www.semperflex.com |
| Agroslužby Nový Jičín - Odbytové | Nový Jičín | n/a | Wholesale of chemical products | 2 058 | |
| Primus CE, s.r.o. | Příbor | 500 - 999 | Other wholesale | 1 862 | www.primuslaundry.com |
| Dura Automotive Systems CZ, s.r.o. | Kopřivnice - Vlčovice | 250 - 499 | Manufacture of parts and accessories for motor vehicles and their engines | 1500 mil. and more | www.duraauto.com |
| Brose CZ, s.r.o. | Kopřivnice - Vlčovice | 500 - 999 | Manufacture of parts and accessories for motor vehicles and their engines | 1500 mil. and more | www.brose.net |
| Bang & Olufsen, s.r.o. | Kopřivnice - Vlčovice | 200 - 249 | Letting of own property | 1500 mil. and more | www.bang-olufsen.com |
| Tawesco, s.r.o. | Kopřivnice | 500 - 999 | Forging, pressing, stamping and roll forming of metal; powder metallurgy | 1 471 | www.tawesco.cz |
| Vojenský opravárenský podnik 025 Nový Jičín | Šenov u Nového Jičína | 1000 - 1499 | Manufacture of weapons and ammunition | 1 468 | www.vop025.cz |
| Henniges Automotive s.r.o. | Odry | 500 - 999 | Manufacture of other rubber products | 1 286 | www.gdxautomotive.com |
| Stecomtra, s.r.o. | Nový Jičín | 200 - 249 | Manufacture of locks and hinges | 1 079 | |
| Tafonco, a.s. | Kopřivnice | 500 - 999 | Casting of iron | 1 038 | www.tafonco.cz |
| Tatra Export, s.r.o. | Kopřivnice | 1 - 5 | Letting of own property | 1000 - 1499 mil. | |
| Tatra, a.s. | Kopřivnice | 1500 - 1999 | Manufacture of motor vehicles | 882 | www.tatra.cz |
| Romotop, s.r.o. | Suchdol nad Odrou | 250 - 499 | Manufacture of non-electric domestic appliances | 747 | www.romotop.cz |
| Kotouč Štramberk, s.r.o. | Ženklaava | 200 - 249 | Manufacture of cement, lime and plaster | 566 | www.kotouc.cz |
| NC Line, s.r.o. | Suchdol nad Odrou | 250 - 499 | General mechanical engineering | 522 | www.ncline.cz |
| Tonak, a.s. | Nový Jičín | 500 - 999 | Milliners' production | 520 | www.tonak.cz |
| Lucco, a.s. | Velké Albrechtice | n/a | Other retail sale of new goods in specialized stores | 508 | |

DISTRICT OPAVA



BASIC DATA

| | |
|-----------|-----------------------|
| Land Area | 1,126 km ² |
|-----------|-----------------------|

TOWNS WITH POPULATION OVER 5,000

| | | | |
|---------|--------|---------------------|-------|
| Opava | 58,923 | Vitkov | 6,192 |
| Hlučín | 14,232 | Hradec nad Moravicí | 5,371 |
| Kravaře | 6,821 | | |

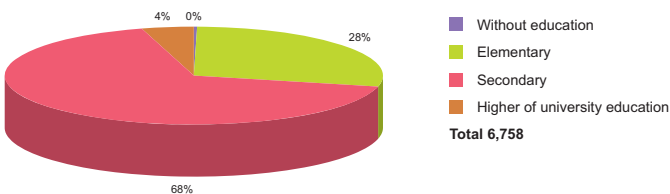
Source: Czech Statistical Office

ACTUAL SITUATION ON LABOUR MARKET

| | |
|--|---------|
| Population | 177,190 |
| Percentage in the total population of Czech Republic (%) | 14.2 |
| Population density (person/km ²) | 157.4 |
| Workforce | 90,479 |
| Number of job seekers | 8,534 |
| Unemployment rate (%) | 9.0 |

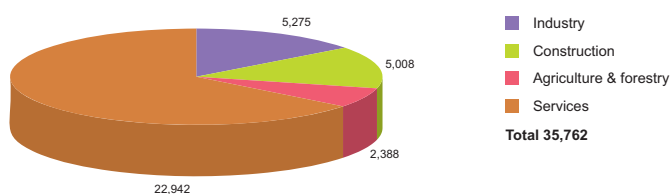
Source: Czech Statistical Office, Ministry of Labour and Social Affairs

NUMBER OF JOB SEEKERS ACCORDING TO EDUCATION



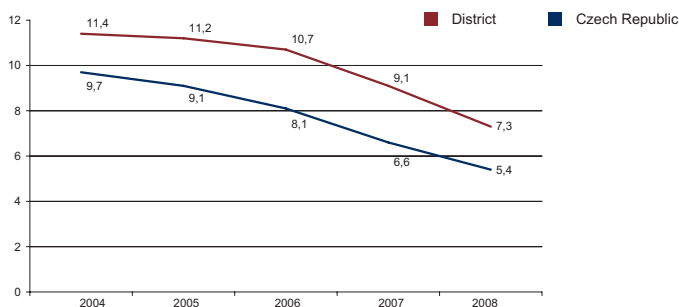
Source: Ministry of Labour and Social Affairs

NUMBER OF ECONOMIC UNITS ACCORDING TO PREVAILING ACTIVITY



Source: Czech Statistical Office

UNEMPLOYMENT - 5 YEAR TREND (%/YEAR)



Source: Czech Statistical Office

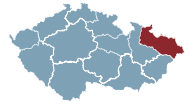
FOREIGN DIRECT INVESTMENT

| | FDI (CZK) | FDI (EUR) |
|-------------------------|---------------|------------|
| Opava | 8 511 604 | 319 745 |
| CR (total) | 2 032 111 185 | 76 337 761 |
| Prague | 1 049 062 899 | 39 408 824 |
| Moravia-Silesia Average | 27 416 794 | 1 029 932 |

Source: Czech National Bank

IMPORTANT COMPANIES IN THE DISTRICT ACCORDING TO TURNOVER

| Name of company | Location | Employees | Activity (Sector) | Turnover | www |
|------------------------------|------------------------|-------------|---|--------------------|----------------------|
| Ivax Pharmaceuticals, s.r.o. | Opava - Komárov | 1000 - 1499 | Manufacture of basic pharmaceutical products | 6 490 | www.ivax-cr.com |
| Model Obaly, a.s. | Opava - Předměstí | 500 - 999 | Manufacture of corrugated paper and paperboard and of containers of paper | 3 972 | www.modelgroup.com |
| Argos Elektro, a.s. | Opava - Kateřinky | 50 - 99 | Wholesale of electrical household appliances and radio and television goods | 2 082 | www.argos.cz |
| Svam CS, s.r.o. | Dolní Životice | 50 - 99 | Wholesale of solid, liquid and gaseous fuels and related products | 1500 mil. and more | www.svam.cz |
| Brano, a.s. | Hradec nad Moravicí | 2000 - 2499 | Manufacture of locks and hinges | 1500 mil. and more | www.brano.cz |
| Tempo, obchodní družstvo | Opava - Město | 500 - 999 | Retail sale in non-specialized stores with food, beverages or tobacco predominating | 1 189 | www.jednota.opava.cz |
| Techfloor s.r.o. | Opava - Otice | n/a | Other construction work involving special trades | 1000 - 1499 mil. | www.techfloor.cz |
| Petr Lamich - Lama | Opava - Předměstí | 10 - 19 | Wholesale of solid, liquid and gaseous fuels and related products | 1000 - 1499 mil. | |
| MSA, a.s. | Dolní Benešov | 500 - 999 | Manufacture of taps and valves | 1000 - 1499 mil. | www.msa.cz |
| Armatury Group, a.s. | Dolní Benešov | 200 - 249 | Manufacture of taps and valves | 1000 - 1499 mil. | www.armaturygroup.cz |
| Lanex, a.s. | Bolatice | 500 - 999 | Manufacture of canvas, tents, etc. | 991 | www.lanex.cz |
| Ferram, a.s. | Opava - Město | 200 - 249 | Wholesale of metals and metal ores | 941 | www.ferram.cz |
| FAU s. r. o. | Opava - Město | 25 - 49 | Wholesale of solid, liquid and gaseous fuels and related products | 856 | www.fau.cz |
| Witzenmann Opava, s.r.o. | Opava | 250 - 499 | Treatment and coating of metals; general mechanical engineering | 702 | www.witzenmann.cz |
| Silagra CZ, a.s. | Opava Předměstí | 50 - 99 | Manufacture of prepared animal feeds | 700 | www.silagra.cz |
| Jatka - Kurka, s.r.o. | Otice | n/a | Production and preserving of meat | 690 | www.jatkyotice.cz |
| TQM - holding, s.r.o. | Opava - Předměstí | 250 - 499 | Freight transport by road | 676 | www.tqm.cz |
| KSR Industrial, s.r.o. | Opava - Předměstí | n/a | Letting of own property | 660 | |
| Linaset, a.s. | Budišov nad Budišovkou | 500 - 999 | Manufacture of plastic components for productive consumption | 645 | www.linaset.cz |
| Akzo Nobel Coatings CZ, a.s. | Opava - Komárov | 100 - 199 | Manufacture of paints, varnishes and similar coatings, printing ink and mastics | 520 | www.balakov.com |



DISTRICT OSTRAVA-CITY

BASIC DATA

| | |
|-----------|---------------------|
| Land Area | 214 km ² |
|-----------|---------------------|

TOWNS WITH POPULATION OVER 5,000

| | |
|----------|---------|
| Ostrava | 308,374 |
| Vratimov | 6,712 |
| Šenov | 5,658 |

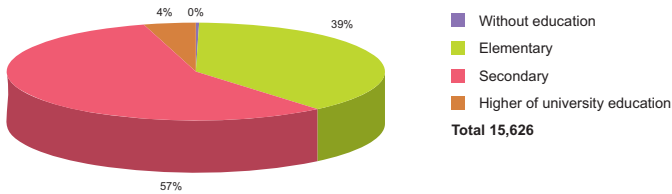
Source: Czech Statistical Office

ACTUAL SITUATION ON LABOUR MARKET

| | |
|--|---------|
| Population | 336,777 |
| Percentage in the total population of Czech Republic (%) | 26.9 |
| Population density (person/km ²) | 1,573.7 |
| Workforce | 173,254 |
| Number of job seekers | 18,856 |
| Unemployment rate (%) | 10.6 |

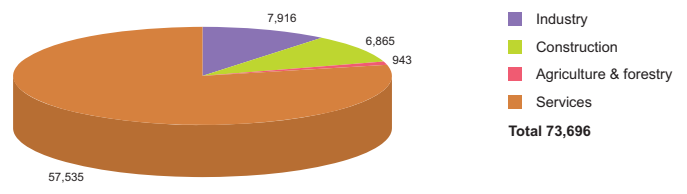
Source: Czech Statistical Office, Ministry of Labour and Social Affairs

NUMBER OF JOB SEEKERS ACCORDING TO EDUCATION



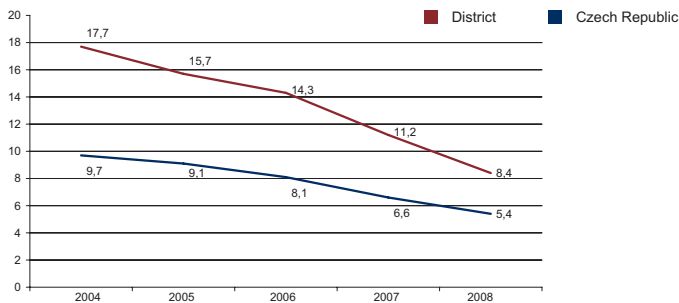
Source: Ministry of Labour and Social Affairs

NUMBER OF ECONOMIC UNITS ACCORDING TO PREVAILING ACTIVITY



Source: Czech Statistical Office

UNEMPLOYMENT - 5 YEAR TREND (%/YEAR)



Source: Czech Statistical Office

FOREIGN DIRECT INVESTMENT

| | FDI (CZK) | FDI (EUR) |
|-------------------------|---------------|------------|
| Ostrava-city | 109 309 817 | 4 106 304 |
| CR (total) | 2 032 111 185 | 76 337 761 |
| Prague | 1 049 062 899 | 39 408 824 |
| Moravia-Silesia Average | 27 416 794 | 1 029 932 |

Source: Czech National Bank

IMPORTANT COMPANIES IN THE DISTRICT ACCORDING TO TURNOVER

| Name of company | Location | Employees | Activity (Sector) | Turnover | www |
|---------------------------------------|----------------------------|-------------------|---|----------|----------------------------|
| ArcelorMittal Ostrava a.s. | Ostrava - Kunčice | 10 000 - and more | Manufacture of basic iron and steel and of ferro-alloys | 54 254 | www.mittalsteelostrava.com |
| OKD, a.s. | Ostrava - Moravská Ostrava | 10 000 - and more | Mining and agglomeration of hard coal | 23 759 | www.okd.cz |
| Evráz Vítkovice Steel, a.s. | Ostrava - Hulváky | n/a | Manufacture of basic iron and steel and of ferro-alloys | 20 478 | www.vitkovicesteel.com |
| Pharmos, a.s. | Ostrava - Radvanice | 500 - 999 | Wholesale of pharmaceutical goods | 11 724 | www.pharmos.cz |
| eD` system Czech, a.s. | Ostrava - Mariánské Hory | 100 - 199 | Wholesale of computers, computer peripheral equipment and software | 11 138 | www.edcz.cz |
| Asus Czech, s.r.o. | Ostrava - Hrabová | 500 - 999 | Manufacture of computers and other information processing equipment | 8 933 | www.asus.cz |
| TCHAS, spol. s r. o. | Ostrava - Poruba | 1000 - 1499 | General construction of buildings and civil engineering works | 7 574 | www.tchas.cz |
| OKD, OKK, a.s. | Ostrava-Přívóz | 1000 - 1499 | Manufacture of coke oven products | 7 196 | www.okd.cz |
| Hruška, s.r.o. | Ostrava - Martínov | 1500 - 1999 | Wholesale of fruit and vegetables | 6 592 | hruska.info |
| BorsodChem Mchz, s.r.o. | Ostrava - Mariánské Hory | 500 - 999 | Manufacture of other organic basic chemicals | 5 626 | www.bc-mchz.cz |
| Vitkovice, a.s. | Ostrava - Vítkovice | 200 - 249 | Distribution and trade of electricity | 4 784 | www.watrex.com |
| DHL Express (Czech Republic) , s.r.o. | Ostrava - Přívóz | 1000 - 1499 | Activities of other transport agencies | 4 311 | www.dhl.cz |
| ČEZ Distribuční služby, s.r.o. | Moravská Ostrava | 2000 - 2499 | Manufacture of electricity distribution and control apparatus | 4 167 | www.cezdistribuce.cz |
| ČEZ Logistika, s.r.o. | Moravská Ostrava | 200 - 249 | Wholesale of other machinery for use in industry, trade and navigation | 4 055 | www.cezlogistika.cz |
| Vonet CR, s.r.o. | Ostrava - Poruba | 50 - 99 | Wholesale of tobacco products | 3 841 | www.vonet.cz |
| OKD, Doprava, a.s. | Moravská Ostrava | 1500 - 1999 | Transport via railways | 3 504 | www.okd-doprava.cz |
| CZECH-KARBON s.r.o. | Moravská Ostrava | 6 - 9 | Distribution and trade of electricity | 3 437 | www.czechkarbon.cz |
| SMP Net, s.r.o. | Ostrava Moravská Ostrava | 25 - 49 | Distribution and trade of gaseous fuels through mains | 3 358 | www.rwe-smpnet.cz |
| ODS - Dopravní stavby Ostrava, a.s. | Ostrava-Jih - Zábřeh | n/a | Construction of bridges, overhead motorways, tunnels and pedestrian subways | 3 142 | www.ods-dso.cz |
| VVT - Vitkovice Válcovna Trub, a.s. | Ostrava - Vítkovice | 500 - 999 | Manufacture of steel tubes | 2 944 | www.tube.cz, www.trubky.cz |