

PLZEŇ REGION

DISTRICT DOMAŽLICE
 DISTRICT KLATOVY
 DISTRICT PLZEŇ-SOUTH
 DISTRICT PLZEŇ-CITY
 DISTRICT PLZEŇ-NORTH
 DISTRICT ROKYCANY
 DISTRICT TACHOV



ABOUT REGION

The region of Plzeň is located in the western part of Bohemia on the boundary with Bavaria, neighboring with Central and South Bohemia and with the regions of Karlovy Vary and Ústí nad Labem. The Plzeň Region is divided among seven districts: Domažlice, Klatovy, Plzeň-město (City), Plzeň-sever (North), Rokycany and Tachov. The area of the Plzeň region is 7,561 km², i.e. 9.6 % of the country's territory.

It is the third largest of regions. As of H1 2009 the Plzeň Region had a population of 568,976 which is 5.4 % of the Czech Republic population and the ninth place among the country's region. The region's capital Plzeň with 165,238 inhabitants is the fourth largest city in Czech Republic. There are 14 towns with a population over 5,000 in the Plzeň Region.

The most important natural monuments include the National Park of Šumava, sanctuary Šumava and sanctuary Český les in the Plzeň Region. All of these are continuously gaining importance as winter sports resorts. Areas in the vicinity of Plzeň also offer interesting space for leisure and recreation activities. Though none of the landmarks and historic buildings in the region belongs to the UNESCO list of World Heritage, the region is virtually covered with them. Among the most interesting are monasteries in Plasy and Kladruby and castles Kozel, Rabi (ruins) and Švihov.

There are three urban sanctuaries in Plzeň Region. The tower of St. Bartholomew's Dome (the highest church tower in Czech Republic) has become

a symbol of the sanctuary in Plzeň. The other two sanctuaries are in Domažlice and Horšovský Týn. The folklore festival organized every year in Domažlice (sub-region Chodsko) is an event of utmost cultural importance for the region.

The largest university in Plzeň Region is Západočeská univerzita (West Bohemia University) in Plzeň, with seven colleges offering courses in engineering, science, and humanities, as well as new disciplines of applied sciences. There is also a local faculty of Medicine belonging to Charles University Prague. Private universities are not of much importance in Plzeň. One of them, Vysoká škola v Plzni (University of Plzeň) is focused on health care.

Plzeň and its outskirts have always belonged to the most industrialized areas in the country, mainly thanks to rich deposits of raw materials. Foreign investments are flowing in the electronics, machinery and food industries. Lumber and car making industries have their importance here as well. Thematic industrial clusters are not well developed yet.

This region's potential depends on its advantageous position in the western part of the country. Other promising assets include qualified workforce, the status of the local university, sufficient supplies of raw materials for the manufacturing industry, good conditions for tourism in mountain areas and numerous landmarks and natural monuments.

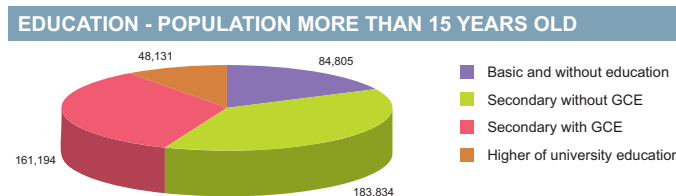
BASIC DATA	
Land Area	7,561 km ²

ACTUAL SITUATION ON LABOUR MARKET	
Population	568,976
Percentage in the total population of Czech Republic (%)	5.4
Population density (person/km ²)	75.3
Workforce	322,554
Number of job seekers	21,506
Unemployment rate (%)	6.5

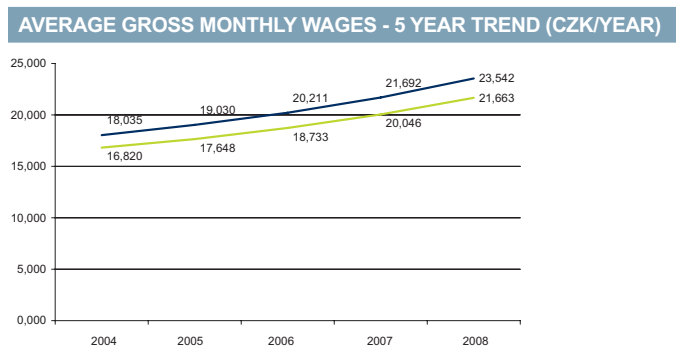
Source: Czech Statistical Office, Ministry of Labour and Social Affairs

NUMBER OF ECONOMIC UNITS ACCORDING TO PREVAILING ACTIVITY	
Total	136,698
Industry	17,247
Construction	16,117
Agriculture & forestry	9,727
Services	92,651

Source: Czech Statistical Office



Source: Czech Statistical Office



Source: Czech Statistical Office

GDP BY REGIONS				
Region	TOTAL		Per capita	
	mln. CZK	mln. EUR	Total CZK	Total EUR
Plzeň	179 545	7 198	322 162	11 603
Average GDP for Czech regions	252 161	10 110	341 989	13 711
Share in GDP of the Czech Republic	5%			

Source: Czech Statistical Office

AVERAGE GROSS MONTHLY WAGES - 5 YEAR TREND										
Year	2004		2005		2006		2007		2008	
	CZK	EUR	CZK	EUR	CZK	EUR	CZK	EUR	CZK	EUR
Plzeň	16,820	527	17,648	593	18,733	661	20,046	722	21,663	869
Average for Czech Republic	18,035	565	19,030	639	20,211	713	21,692	781	23,542	944

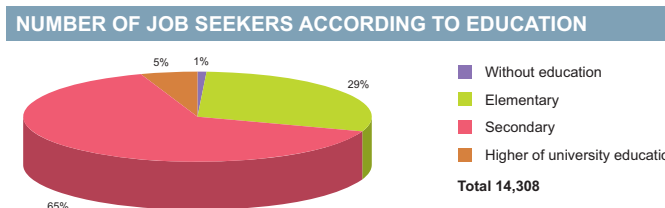
Source: Czech Statistical Office

ADMINISTRATIVE BREAKDOWN	
Number of districts	7
Number of municipalities	501
of that, number of towns	54

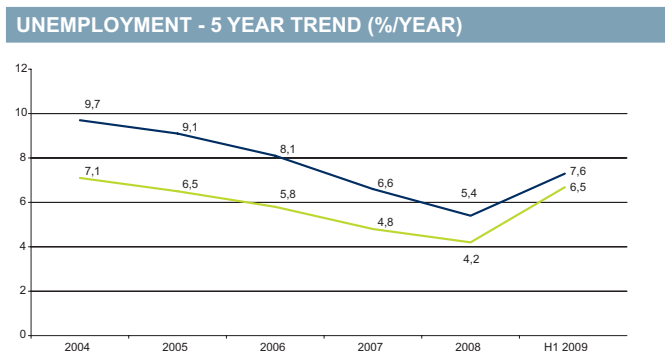
Source: Czech Statistical Office

NUMBER OF EMPLOYEES AND GROSS MONTHLY WAGES IN MANUFACTURING ACCORDING TO NACE CLASSIFICATION		
	Number of employees	Wages (EUR)
Manufacturing	58,992	930
Man. of food products, beverages and tobacco products	5,730	1,139
Man. of chemical, chemical products, pharmaceuticals, and chemical fibres	NA	NA
Man. of rubber and plastic products	5,609	828
Man. of basic metals and fabricated metal products	6,841	999
Man. and repairs of machinery and equipment	6,579	1,025
Man. of electrical and optical equipment	15,859	818
Man. of transport equipment	10,012	939

Source: Czech Statistical Office



Source: Ministry of Labour and Social Affairs



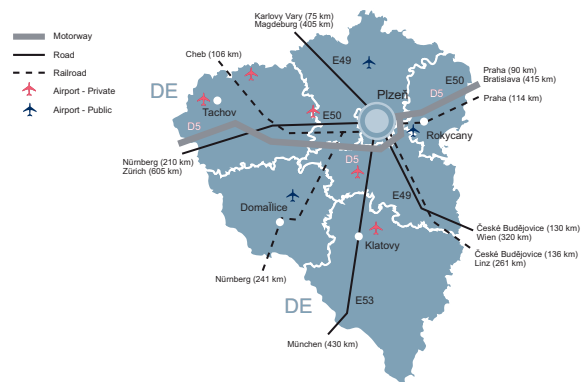
Source: Czech Statistical Office

FOREIGN DIRECT INVESTMENT		
Region	FDI (CZK)	FDI (EUR)
min.	17 940 192	673 937
Plzeň	59 215 392	2 224 470
max.	1 049 062 899	39 408 824
Average	145 150 799	5 452 697

Source: Czech National Bank

LIST OF AIRPORTS	Specification		
	Public/Private	Civil/Military/Varied	International/Intrnational
Erpužice	Private	Civil	Intrnational
Klatovy	Private	Civil	International
Křižanec	Private	Civil	Intrnational
Letkov	Public	Civil	Intrnational
Plasy	Public	Civil	Intrnational
Plzeň Lině	Private	Civil	International
Rokycany	Private	Civil	Intrnational
Staňkov	Public	Civil	Intrnational
Tachov	Private	Civil	Intrnational

Source: Ministry of Transport, Aerobaze.cz



SCHOOL SYSTEM	Number of schools	Number of students	Number of graduates
Secondary schools			
Technical fields	n/a	8 554	2 228
Economic fields	n/a	7 064	1 784
ICT fields	n/a	2 517	634
Higher schools			
Technical fields	n/a	100	25
Economic fields	n/a	432	70
ICT fields	n/a	60	12
Universities			
Technical fields	1	4 537	870
Economic fields	1	2 569	618
ICT fields	1	3 219	769

Source: Institute for Information on Education

LABOUR OFFICE				
City	Address	Phone	Fax	E-mail
Domažlice	Mgr. B. Staška 265, 344 01 Domažlice 1	379 739 011 379 724 698	379 725 841	domazlice@do.mpsv.cz
Klatovy	Krameriova 180, 339 01 Klatovy 1	376 349 111	376 349 497	klatovy.up@kt.mpsv.cz
Plzeň-south	Kapliřova 2731/7, 301 00 Plzeň 1	377 411 111	377 429 671	posta.up@pj.mpsv.cz
Plzeň-city	„Kapliřova 2731/7, 301 00 Plzeň 1	377 411 111	377 429 669, 377 429 670	posta@pm.mpsv.cz
Plzeň-north	Kapliřova 2731/7, 301 00 Plzeň 1	377 411 111	377 429 668	posta.up@ps.mpsv.cz
Rokycany	Palackého 162, 337 01 Rokycany 1	950 158 111	950 158 110	posta@ro.mpsv.cz
Tachov	tř. Míru 1633, 347 01 Tachov 1	374 799 411	374 723 754	posta.up@tc.mpsv.cz

Source: Ministry of Labour and Social Affairs

KNOWLEDGE OF FOREIGN LANGUAGES			
LANGUAGE	ALL SKILLS LEVEL (%)	LANGUAGE	ALL SKILLS LEVEL (%)
English	58.8	Spanish	0.0
German	48.1	Polish	7.6
French	9.9	Russian	19.1
Italian	1.5	Nordic languages	3.1

Source: Augur Consulting

LIST OF UNIVERSITIES 2009				
Name of school	WWW	Orientation	Titles awared	Students
Univerzita Karlova - Lékařská fakulta v Plzni	www.lfp.cuni.cz	General medicine	Bc., MUDr.	2 045
Vysoká škola v Plzni	www.vsplzen.cz	Health care	Bc.	
Západočeská univerzita v Plzni	www.zcu.cz	Variety of programmes	Bc., Mgr., Ing.	17 990

Source: Institute for Information on Education

SELECTED INDUSTRIAL ZONES IN THE PLZEŇ REGION	
Industrial zone	Area (ha)
Domažlice - PZ lokalita za Kasárny	10,00
Kožlany	12,00
Město Touškov	13,00
Myslinka	19,54
Plzeň - Borská pole	105,00
Plzeň - PZ Škoda	189,98
Rozvojová zóna Litice	11,50
Stod - Průmyslová zóna	11,00

Source: CzechInvest

ENVIROS, s.r.o. – energy and environmental consultancy, a member of the international Enviros Consulting Group – providing services for investors including

- Environmental Due Diligence
- Renewable Energy and Energy Efficiency
- Energy and Environmental Management

Contact: ENVIROS, s.r.o., Na Rovnosti, 130 00 Prague 3, Czech Republic
Phone: +420 284 007 498; Fax: +420 284 861 245; e-mail: office@enviros.cz, www.enviros.cz

IMPORTANT COMPANIES IN THE REGION ACCORDING TO TURNOVER							
Name of company	Location	Employees	Activity (Sector)	Turnover	Phone	E-mail	WWW
Západočeská plynárenská, a.s.	Plzeň 3 - Jižní Předměstí	250 - 499	Distribution and trade of gaseous fuels through mains	6 340	840 113 355, 377 097 111	skg@skg.cz	www.rwe-zcp.cz
PLISEN STEEL s.r.o.	Plzeň 3 - Jižní Předměstí	250 - 499	Casting of steel	6 015	378 133 339, 378 133 599	info@pilsensteel.cz	www.pilsensteel.cz
Jtekt Automotive Czech Plzeň, s.r.o.	Plzeň 3 - Skvrňany	500 - 999	Manufacture of parts and accessories for motor vehicles and their engines	5 076	378 011 011, 378 011 060	info@jtekt.cz	www.jtekt.cz
Lasselsberger, a.s.	Plzeň 3 - Jižní Předměstí	3000 - 3999	Manufacture of ceramic tiles and flags	4 962	378 021 171, 377 670 119	info@rako.cz	www.rako.cz
Škoda Power, a.s.	Plzeň 3 - Jižní Předměstí	500 - 999	Manufacture of engines and turbines, except aircraft, vehicle and cycle engines	4 766	378 185 939, 377 717 537	info.power@skoda.cz	www.skoda.cz/energo www.skoda.cz/power
Škoda Transportation, s.r.o.	Plzeň 3 - Jižní Předměstí	500 - 999	Manufacture of railway and tramway locomotives and rolling stock	4 393	378 186 666	transportation@skoda.cz	www.skoda.cz/transportation
Borgers CS, s.r.o.	Rokycany	2000 - 2499	Manufacture of other plastic products	3 939	371 700 111, 371 725 428	info@borgers.cz	www.borgers-group.com
Yazaki Wiring Technologies Czech, s.r.o.	Plzeň 2-Slovany - Božkov	2500 - 2999	Manufacture of electrical equipment for engines and vehicles n.e.c.	3 703	378 213 319, 378 213 100	siemens.cz@siemens.com	www.siemens.cz www.yazaki-czech.cz
HP - Pelzer k. s.	Plzeň - Křimice	1000 - 1499	Manufacture of parts and accessories for motor vehicles and their engines	3 416	378 215 112, 378 215 111	contact.plzen@pelzer.cz	www.pelzer.de
Škoda JS, a.s.	Plzeň	500 - 999	Manufacture of steam generators, except central heating hot water boilers	2 860	378 041 111, 378 042 202	info@skoda-js.cz	www.skoda-js.cz
Masokombinát Plzeň, s.r.o.	Plzeň 3 - Východní Předměstí	200 - 249	Production, processing and preserving of meat and meat products	2 743	377 616 200, 377 616 300	info@schneider-group.cz	www.schneider-group.eu
Stora Enso Timber Planá, s.r.o.	Planá	250 - 499	Sawmilling and planing of wood; impregnation of wood	2 409	569 776 600, 374 707 700	petr.randis@storaenso.com	www.storaenso.com
Brush SEM, s.r.o.	Plzeň 3 - Doudlevo	500 - 999	Manufacture of electric motors, generators and transformers	2 382	378 210 111, 378 210 628	sales@sem.fki-et.com	www.brush.eu
Škoda Electric, s.r.o.	Plzeň 3 - Jižní Předměstí	500 - 999	Manufacture of electric motors, generators and transformers	2 281	378 181 113, 378 181 155	electric@skoda.cz	www.skoda.cz
Agropodnik Domažlice a. s.	Domažlice - Bezděkovské Předměstí	100 - 199	Wholesale of chemical products	2 116	379 724 621, 379 722 190	agropodnik@agropodnik.cz	www.agropodnik.cz/
Berger Bohemia a. s.	Plzeň 3 - Litice	n/a	Construction of motorways, roads, airfields and sport facilities	2 006	378 777 101, 378 777 111	info@bergerbohemia.cz	www.berger-holding.com
Plzeňská teplárenská, a.s.	Plzeň 4 - Východní Předměstí	250 - 499	Steam and hot water supply	1 879	377 221 026, 377 180 229	kin@pltep.cz	www.pltep.cz

SELECTED CZECHINVEST PROJECTS IN THE REGION					
Name	Location	Investor	Country	Sector	Year
Behr Thermot-tronik Czech, s.r.o.	Holýšov	BEHR V.	Germany	manufacture of motor vehicles	2007
DAIHO (CZECH) s.r.o.	n.s.	Daiho kogyo	Japan	plastics, rubber	2000
Daikin Industries Czech Republic s.r.o.	Plzeň	Daikin Industries	Japan	electronics, electrotechnics	2003
Fuji Koyo Czech, s.r.o.	Plzeň	Fuji Kiko	Japan	manufacture of motor vehicles	2002
Haselmeier s.r.o.	Dnešice	Haselmeier	Switzerland	biotechnology, medical equipment	2007
IDEAL AUTOMOTIVE Bor, s.r.o.	Tachov	Ideal Automotive	Germany	manufacture of motor vehicles	2002
JTEKT Automotive Czech Plzeň s.r.o.	Plzeň	JTEKT Europe S.A.S.	France	manufacture of motor vehicles	2007
Koyo Steering Systems Czech s.r.o.	Plzeň	Koyo Seiko	Japan	manufacture of motor vehicles	2002
Matsushita Electric Works (CZ), s.r.o.	Planá	Matsushita Elec.	Japan	electronics, electrotechnics	1996
Muramoto Manufacturing Europe s.r.o.	Přeštice	MURAMOTO INDUSTRY	Japan	metal products	2006
OLHO - Technik Czech s.r.o.	Janovice	OLHO-Technik	Germany	electronics, electrotechnics	2004
PA Business Systeme CZ s.r.o.		PA Business Systems Ltd.	United Kingdom	electronics, electrotechnics	2007
Panasonic AVC Networks Czech, s.r.o.	Plzeň	Matsushita Electric Industrial Co.	Japan	electronics, electrotechnics	2000
PDM technology Europe s.r.o.	Plzeň	PDM technology ApS	Denmark	IT, software development	2009
Precision Castparts CZ s.r.o.	Plzeň	PCC	USA	engineering	2000
PROWELL s.r.o.	Rokycany	Prowell	Germany	paper, wood processing	2000
Rodenstock ČR s.r.o.	Klatovy	Rodenstock	Germany	biotechnology, medical equipment	2000
Solectron Czech s.r.o.	Plzeň	Solectron Corporation	USA	repair centre	2007
ŠKODA POWER a.s.	Plzeň	ŠKODA HOLDING a.s.	Czech Republic	engineering	2008
ŠKODA TRANSPORTATION s.r.o.	Plzeň	ŠKODA HOLDING	Czech Republic	electronics, electrotechnics	2006
Technocrane s.r.o.	Plzeň	Horst Burbulla	Germany	electronics, electrotechnics	2002
TietoEnator Consulting, a.s.	Plzeň	TietoEnator Consulting, a.s.	Czech Republic	IT, software development	2009
VIZA AUTO CZ, s.r.o.	Plzeň	Viza Automocion	Spain	manufacture of motor vehicles	2003
Wacker-Chemie s.r.o.	Plzeň	Wacker Chemie	Germany	chemistry, pharmacy	2007
ZF Engineering Plzeň s.r.o.	Plzeň	ZF Engineering Plzeň s.r.o.	Germany	engineering	2007

RENTS IN INDUSTRIAL PREMISES IN CR REGIONS (EUR/sqm/month)

Plzeň Region	2,75-4,25
Note 1: Net effective rents for units ca 4,000 sq m which is average deal size in the market	
Note 2: Premises are immediately available only some regions.	

Source: CB Richard Ellis

PRIME RENTS IN SHOPPING CENTRES (EUR/sqm/month)

Plzeň Region	20-38
Note: for units ca 100 sqm.	

Source: CB Richard Ellis

INDUSTRIAL PARKS IN THE CZECH REPUBLIC

Project	Region	City/ Town	Total Area (warehouse + office)	Year of Completion
CTPark Bor	Plzeň	Bor	240 470	n/a
Logistic Centre Ejovice	Plzeň	Ejovice	5 000	2008
VGP Park Nýřany	Plzeň	Nýřany	16 760	2008-2009
D5 Logistics Park	Plzeň	Ostrov u Stříbra	60 100	2007-2008
Business Park Plzeň Křimice	Plzeň	Pilsen	24 609	2007
CTPark Plzeň	Plzeň	Pilsen	115 812	2007-2008
Flexis Business Park 1. phase	Plzeň	Pilsen	3 300	2007
Orange Park	Plzeň	Pilsen	23 365	2008
Prologis Park Štěnovice	Plzeň	Pilsen	58 504	2008-2009

Note: Date of completions highlighted in red - we don't know the beginning of completion

Source: CB Richard Ellis

IMPORTANT CONTACTS IN THE REGION

Krajský úřad/Regional Council
 Škroupova 18, 30613 Plzeň
 tel.: 377 195 111
 fax: 377 195 405
 Email: posta@kr-plzensky.cz
 URL: www.kr-plzensky.cz

Statutární město Plzeň
Magistrát města/City Hall - Plzeň
 Nám. Republiky 1, 30100 Plzeň
 tel.: 378 031 111, 378 032 001
 fax: 378 032 002
 Email: posta@plzen.eu
 URL: www.plzen.eu, e-podatelna.plzen.eu

CzechInvest
Regionální kancelář/Regional Office
 Anglické náměstí 1, 301 45 Plzeň
 tel.: 378 226 630-4
 fax: 378 226 632
 Email: plzen@czechinvest.org
 URL: www.czechinvest.org
 Contact persons: PhDr. Blanka Bendlová, Bc. Pavel Hájek, Ing. Renata Pašková

Regionální rozvojová agentura/Regional Development Agency
 Riegrova 1, 306 25 Plzeň
 tel.: 377 237 679
 fax: 377 235 320
 Email: info@rra-pk.cz
 URL: www.rra-pk.cz

Regionální poradenská a informační centrum/Regional Consulting & Information Center-Institut průmyslového managementu, s.r.o.
 Univerzitní 22, 320 00 Plzeň
 tel.: 377 638 475, 377 638 423
 fax: 377 638 402
 Email: info@ipm-plzen.cz
 URL: www.ipm-plzen.cz
 Contact persons: Ing. Robert Caihlam, Ing. Miroslav Tůma, Ph.D.

CzechTrade - Regional Information Place Plzeň
 Teslova 3, 301 00 Plzeň
 tel.: 724 613 028
 Email: marie.bastarova@czechtrade.cz
 URL: www.czechtrade.cz
 Contact person: Marie Baštařová

Krajská hospodářská komora/Regional Economic Chamber
 Teslova 3, 301 00 Plzeň
 Email: janovska@khkpk.cz
 URL: www.khkpk.cz
 Contact person: Markéta Janovská

BIC Plzeň - podnikatelské a inovační centrum/Business innovation centre Plzeň
 Riegrova 1, 301 11 Plzeň
 tel.: 377 235 379
 fax: 377 235 320
 Email: bic@bic.cz
 URL: www.bic.cz

Euroskop.cz - Eurocentrum Plzeň
 nám. Republiky 41, 301 16 Plzeň
 tel.: 378 035 338,339
 Email: eurocentrum.plzen@euroskop.cz
 URL: www.euroskop.cz/659/sekce/eurocentrum-plzen/

UTILITIES

GAS
Západočeská plynárenská, a.s.
 Guldenerova 2657/17, 326 00 Plzeň-Východní Předměstí
 tel.: 840 113 355
 Email: info@rwe.cz
 URL: www.rwe.cz

ZČP Net, s.r.o.
 Ed. Beneše 2439/70-2438/72
 304 77 Plzeň
 tel.: 377 097 498

fax: 377 097 400
 email: info@rwe-zcpnet.cz
 web: www.rwe-zcpnet.cz

ELECTRICITY
ČEZ Zákaznické služby, s.r.o.
 Guldenerova 19, 303 28 Plzeň
 tel.: 840 840 840
 fax: 371 102 008
 Email: cez@cez.cz
 URL: www.cez.cz

WATER AND SEWER SYSTEM
Vodárna Plzeň, a.s.
 Malostranská 2, 317 68 Plzeň
 tel.: 377 413 111, 377 413 300
 fax: 377 413 555
 Email: mail@vodarna.cz
 URL: www.vodarna.cz

Šumavské vodovody a kanalizace, a.s.
 Čs. legií 37, 339 01 Klatovy
 tel.: 376 356 234,235
 Email: svk@svak.cz
 URL: www.svak.cz

Chodské vodárny a kanalizace, a.s.
 Bezděkovské předměstí 388, 344 78 Domažlice
 tel.: 379 792 311
 fax: 379 722 159
 Email: chvak@chvak.cz
 URL: www.chvak.cz

HEAT
Plzeňská energetika, a.s.
 Tyllova 1/57, 316 00 Plzeň
 tel.: 378 133 790
 fax: 378 133 007
 Email: pe@pe.cz
 URL: www.pe.cz

BOKROŠOVÁ, s.r.o.
 U Borského parku 1213/3, 301 00 Plzeň
 tel.: 377 371 250, 724 272 460
 fax: 377 371 250
 Email: bokrosova@volny.cz
 URL: www.bokrosova.cz

HF - ENERGO spol. s r.o.
 Kříčkova 1203, 342 01 Sušice
 tel./fax: 376 520 277
 Email: hf-energo@egf.cz

Plzeňské služby a.s.
 Edvarda Beneše 430/23, 301 00 Plzeň
 tel.: 377 499 206, 800 505 505
 fax: 377 423 509
 Email: info@plzenskesluzby.cz
 URL: www.plzenskesluzby.cz

Plzeňská teplárenská, a.s. - centrála
 Doubravecká 2578/1, 304 10 Plzeň
 tel.: 377 180 111
 fax: 377 180 222
 Email: inbox@plzenskateplarenska.cz
 URL: www.pltep.cz

Polyteza, spol. s r.o.
 Holoubkov 293, 338 01 Holoubkov
 tel.: 371 751 167
 fax: 371 722 239
 Email: petr.suchy@seap.cz

Termglobal, s.r.o.
 Na Roudné 433/46, 301 00 Plzeň
 tel.: 377 528 467
 fax: 377 527 694

Transteplo Kdyně, spol. s r.o.
 Dělnická 425, 345 06 Kdyně
 tel./fax: 379 732 137

DISTRICT DOMAŽLICE



BASIC DATA

Land Area	1,140 km ²
-----------	-----------------------

TOWNS WITH POPULATION OVER 5,000

Domažlice	10,872
Kdyně	5,190

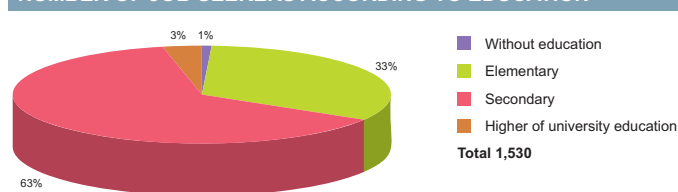
Source: Czech Statistical Office

ACTUAL SITUATION ON LABOUR MARKET

Population	60,222
Percentage in the total population of Czech Republic (%)	10.6
Population density (person/km ²)	52.8
Workforce	32,578
Number of job seekers	2,544
Unemployment rate (%)	7.6

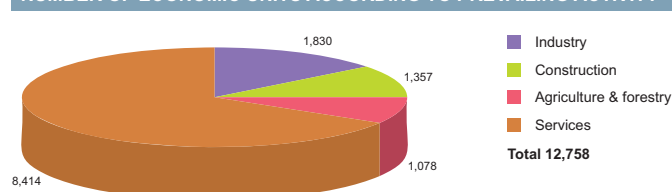
Source: Czech Statistical Office, Ministry of Labour and Social Affairs

NUMBER OF JOB SEEKERS ACCORDING TO EDUCATION



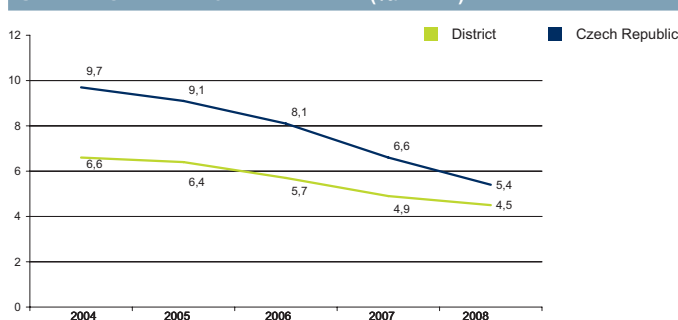
Source: Ministry of Labour and Social Affairs

NUMBER OF ECONOMIC UNITS ACCORDING TO PREVAILING ACTIVITY



Source: Czech Statistical Office

UNEMPLOYMENT - 5 YEAR TREND (%/YEAR)



Source: Czech Statistical Office

FOREIGN DIRECT INVESTMENT

	FDI (CZK)	FDI (EUR)
Domažlice	1 026 691	38 568
CR (total)	2 032 111 185	76 337 761
Prague	1 049 062 899	39 408 824
Plzeň Average	8 459 342	317 781

Source: Czech National Bank

IMPORTANT COMPANIES IN THE DISTRICT ACCORDING TO TURNOVER

Name of company	Location	Employees	Activity (Sector)	Turnover	www
Agropodnik Domažlice a. s.	Domažlice - Bezděkovské Předměstí	100 - 199	Wholesale of chemical products	2 116	www.agropodnik.cz/agpdomazlice
Karpem, a.s.	Horšovský Týn - Město	100 - 199	Wholesale of wood, construction materials and sanitary equipment	1 159	www.karpem.cz
První chodská stavební společnost, s.r.o.	Klenčí pod Čerchovem	100 - 199	Wholesale of wood, construction materials and sanitary equipment	1 018	www.chodska.cz
Gerresheimer Wilden Czech, s.r.o.	Horšovský Týn - Malé Předměstí	500 - 999	Manufacture of other plastic products	1000 - 1499 mil.	www.gerresheimer-wilden.cz,
Plastik HT a. s.	Horšovský Týn - Malé Předměstí	500 - 999	Manufacture of other plastic products	987	www.plastikht.cz
Holzindustrie Donau, s.r.o.	Trhanov	100 - 199	Sawmilling and planing of wood; impregnation of wood	752	www.holzindustrie-donau.com
APM Automotive s.r.o.	Kdyně	100 - 199	Sale of motor vehicle parts and accessories	720	www.apm.cz
LST, a.s.	Trhanov	250 - 499	Forestry and logging	713	www.lst.cz
Winklmann, s.r.o.	Domažlice - Bezděkovské Předměstí	n/a	Wholesale on a fee or contract basis	604	www.winklmann.cz
Kdynium a. s.	Kdyně	500 - 999	Casting of steel	578	www.kdynium.cz
Stauner palet s.r.o.	Mrákov - Starý Klíčov	100 - 199	Treatment and coating of metals	500 - 999 mil.	
Ekool - WAY, s.r.o.	Domažlice - Týnské Předměstí	6 - 9	Other retail sale in specialized stores	500 - 999 mil.	
ARIMEX TRADE s.r.o.	Domažlice - Týnské Předměstí	n/a	Wholesale of grain, seeds and animal feeds	500 - 999 mil.	
Rosenberg s. r. o.	Klenčí pod Čerchovem	10 - 19	Freight transport by road	418	www.rosenberg.cz
Autocentrum Jan Šmucier, s.r.o.	Horšovský Týn - Velké Předměstí	n/a	Sale of motor vehicles	392	hyundai.smucier.cz
Kovobel, výrobní družstvo	Domažlice - Bezděkovské Předměstí	50 - 99	Manufacture of other agricultural and forestry machinery	322	www.kovobel.cz
Sano - Moderní výživa zvířat, s.r.o.	Domažlice - Hořejší Předměstí	10 - 19	Wholesale of grain, seeds and animal feeds	300 - 499 mil.	www.sano.cz
Podhoran Černíkov, a.s.	Černíkov	250 - 499	Growing of crops combined with farming of animals (mixed farming)	300 - 499 mil.	www.podhoranpalety.cz
Niehoff Nábytek, k.s.	Meclov	n/a	Other retail sale in specialized stores	300 - 499 mil.	
Imagolux, s.r.o.	Domažlice - Bezděkovské Předměstí	100 - 199	Other retail sale in specialized stores	300 - 499 mil.	www.flabeg.com

DISTRICT KLATOVY

BASIC DATA

Land Area	1,940 km ²
-----------	-----------------------

TOWNS WITH POPULATION OVER 5,000

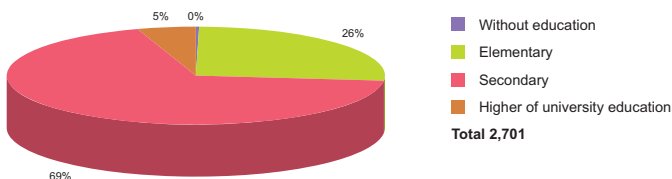
Klatovy	22,890
Sušice	11,524
Horázdovice	5,686
Nýrsko	5,132

ACTUAL SITUATION ON LABOUR MARKET

Population	88,648
Percentage in the total population of Czech Republic (%)	15.6
Population density (person/km ²)	45.7
Workforce	46,153
Number of job seekers	3,510
Unemployment rate (%)	7.4

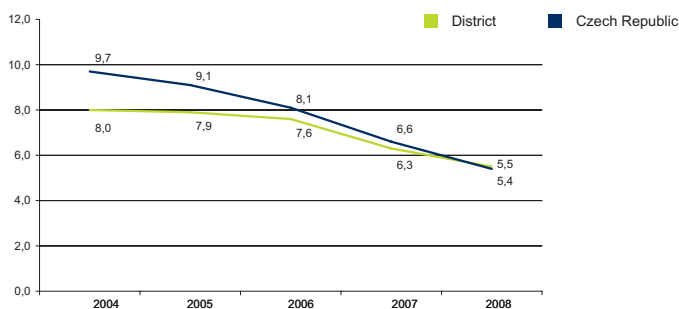
Source: Czech Statistical Office, Ministry of Labour and Social Affairs

NUMBER OF JOB SEEKERS ACCORDING TO EDUCATION



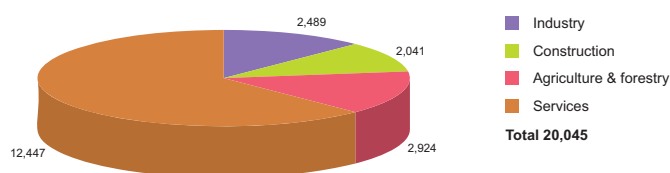
Source: Ministry of Labour and Social Affairs

UNEMPLOYMENT - 5 YEAR TREND (%/YEAR)



Source: Czech Statistical Office

NUMBER OF ECONOMIC UNITS ACCORDING TO PREVAILING ACTIVITY



Source: Czech Statistical Office

FOREIGN DIRECT INVESTMENT

	FDI (CZK)	FDI (EUR)
Klatovy	3 942 505	148 103
CR (total)	2 032 111 185	76 337 761
Prague	1 049 062 899	39 408 824
Plzen Average	8 459 342	317 781

Source: Czech National Bank

IMPORTANT COMPANIES IN THE DISTRICT ACCORDING TO TURNOVER

Name of company	Location	Employees	Activity (Sector)	Turnover	www
Unileasing, a.s.	Klatovy I	50 - 99	Financial leasing	1 805	www.unileasing.cz
Proagro, a.s.	Klatovy IV	100 - 199	Wholesale of grain, seeds and animal feeds	1 474	www.proagro.cz
Západočeské konzumní družstvo Sušice	Sušice I	500 - 999	Retail sale in non-specialized stores with food, beverages or tobacco predominating	1 445	www.zkdsusice.cz
Haas Fertigbau, s.r.o.	Chanovice	250 - 499	Manufacture of elements for built-up structures made of wood and other light materials	1 285	www.haas-fertigbau.cz
Drůbežářský závod Klatovy a. s.	Klatovy IV	250 - 499	Production and preserving of poultrymeat	1 278	www.dzklatovy.cz
Mlékárna Klatovy a. s.	Klatovy IV	200 - 249	Operation of dairies and cheese making	1 167	www.mlekarna-kt.cz
Okula Nýrsko, a.s.	Nýrsko	25 - 49	Manufacture of plastic components for productive consumption	989	www.okula.cz
Rodenstock ČR, s.r.o.	Klatovy III	500 - 999	Manufacture of optical instruments and photographic equipment	878	www.rodenstock.cz
Hasit Šumavské vápenice a omítkáry,	Velké Hydčice	200 - 249	Manufacture of mortars	787	www.hasit-svo.cz
Klatovské dřevo - stavební centrum, s.r.	Klatovy II	n/a	Manufacture of builders' carpentry and joinery	783	
DOPLA PAP a.s.	Sušice II	100 - 199	Manufacture of plastic packing goods	675	www.pap.cz
Olho - Technik Czech, s.r.o.	Janovice nad Úhlavou	200 - 249	Letting of own property	636	
Škoda Klatovy, s.r.o.	Klatovy III	n/a	Manufacture of furnaces and furnace burners	526	
Goldsteig Käsereien Bayerwald CZ, s.r.o.	Nýrsko	1 - 5	Other wholesale	516	
Lorenc Logistic, s.r.o.	Klatovy IV	100 - 199	Other supporting transport activities	463	www.lorenc-logic.cz
Spar Šumava, s.r.o.	Sušice II	50 - 99	Wholesale of food, beverages and tobacco	359	www.spar.cz
Barentz spol s.r.o.	Klatovy IV	25 - 49	Wholesale of chemical products	359	www.barentz.cz
Lyckebý Amylex, a.s.	Horázdovice	25 - 49	Processing and preserving of fruit and vegetables	344	www.lyckebý.cz
Silnice Klatovy, a.s.	Klatovy I	100 - 199	Manufacture of other articles of concrete, plaster and cement	305	www.silnice-klatovy.cz
Spak Foods, s.r.o.	Sušice II	n/a	Manufacture of condiments and seasonings	300 - 499 mil.	www.spak.cz

DISTRICT PLZEŇ-SOUTH



BASIC DATA	
Land Area	1,076 km ²

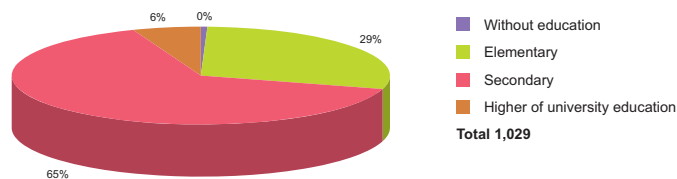
TOWNS WITH POPULATION OVER 5,000	
Přeštice	6,607
Dobřany	6,000

Source: Czech Statistical Office

ACTUAL SITUATION ON LABOUR MARKET	
Population	60,775
Percentage in the total population of Czech Republic (%)	10.7
Population density (person/km ²)	56.5
Workforce	32,357
Number of job seekers	1,708
Unemployment rate (%)	5.1

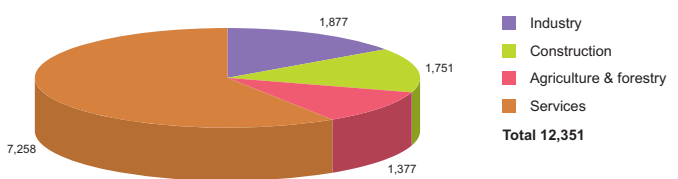
Source: Czech Statistical Office, Ministry of Labour and Social Affairs

NUMBER OF JOB SEEKERS ACCORDING TO EDUCATION



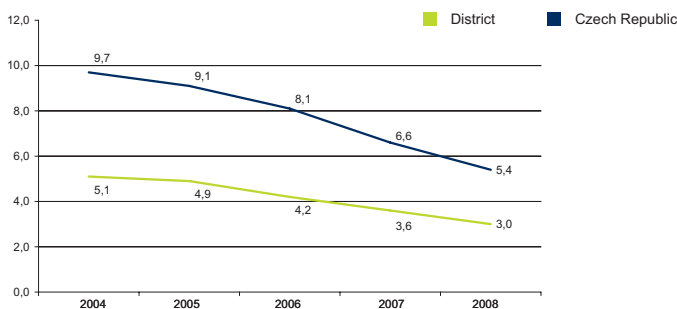
Source: Ministry of Labour and Social Affairs

NUMBER OF ECONOMIC UNITS ACCORDING TO PREVAILING ACTIVITY



Source: Czech Statistical Office

UNEMPLOYMENT - 5 YEAR TREND (%/YEAR)



Source: Czech Statistical Office

FOREIGN DIRECT INVESTMENT

	FDI (CZK)	FDI (EUR)
Plzeň-south	5 007 635	188 116
CR (total)	2 032 111 185	76 337 761
Prague	1 049 062 899	39 408 824
Plzen Average	8 459 342	317 781

Source: Czech National Bank

IMPORTANT COMPANIES IN THE DISTRICT ACCORDING TO TURNOVER

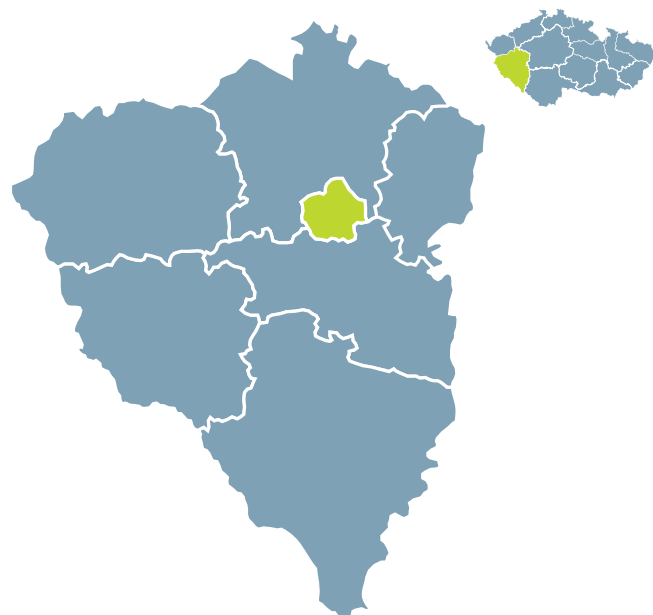
Name of company	Location	Employees	Activity (Sector)	Turnover	www
Vishay Electronic, s.r.o.	Přeštice	1500 - 1999	Manufacture of electronic valves and tubes and other electronic components	1500 mil. and more	www.vishay.com
Petr Březina - APB Plzeň	Losiná	250 - 499	Demolition and wrecking of buildings; earth moving	1500 mil. and more	www.apb-plzen.cz
IACG s.r.o.	Přeštice	500 - 999	Manufacture of parts and accessories for motor vehicles and their engines	1500 mil. and more	www.iacgroup.com
Bohemia Sekt, a.s.	Starý Plzenec	250 - 499	Manufacture of wines	1 434	www.bohemiasekt.cz
Zeten, s.r.o.	Blovce	50 - 99	Wholesale of grain, seeds and animal feeds	719	www.zetenblovice.cz
MD Elmont, s.r.o.	Chotěšov	1500 - 1999	Manufacture of insulated wire and cable	691	
Streicher, s.r.o. Plzeň	Štěnovice	100 - 199	General construction of buildings and civil engineering works	683	www.streicher.cz
KS Katalog - Servis, s.r.o.	Šňáhly	500 - 999	Other retail sale in specialized stores	558	
Lekov, a.s.	Blovce	200 - 249	Manufacture of railway and tramway locomotives and rolling stock	430	www.lekov.cz
Fink, výroba krmných směsí, s.r.o.	Nezvěstice	n/a	Manufacture of prepared feeds for farm animals	358	www.plzen-info.cz/firma/fink/index.php
ProMinent Systems, s.r.o.	Blovce	100 - 199	Manufacture of other plastic products	300 - 499 mil.	www.prominentsystems.cz
Jan Štolba, Bekro	Chlumčany	n/a	General construction of buildings and civil engineering works	300 - 499 mil.	
G - Team, a.s.	Dobřany	100 - 199	Manufacture of taps and valves		www.g-team.cz
Fintec, s.r.o.	Starý Plzenec	10 - 19	Manufacture of basic chemicals	218	www.fintec.cz
Murr CZ, s.r.o.	Stod	500 - 999	Manufacture of other electrical equipment n.e.c.	209	www.murrelektronik.cz
AGC Stod, s.r.o., člen AGC Group	Stod	50 - 99	Wholesale of china and glassware, wallpaper and cleaning materials	202	
ZNZ Přeštice, a.s.	Přeštice	25 - 49	Agricultural service activities; landscape gardening	200 - 299 mil.	
SWA, s.r.o.	Stod	50 - 99	Manufacture of other special purpose machinery and equipment	200 - 299 mil.	www.swa.cz
Serw, s.r.o.	Starý Plzenec - Sedlec	200 - 249	Manufacture of electricity distribution and control apparatus	200 - 299 mil.	www.serw.cz
Okal CZ, s.r.o.	Žákava	50 - 99	Architectural and engineering services (incl. design)	200 - 299 mil.	

DISTRICT PLZEŇ-CITY

BASIC DATA	
Land Area	138 km ²

TOWNS WITH POPULATION OVER 5,000	
Plzeň	165,238

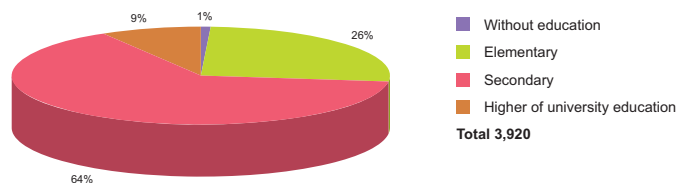
Source: Czech Statistical Office



ACTUAL SITUATION ON LABOUR MARKET	
Population	184,775
Percentage in the total population of Czech Republic (%)	32.5
Population density (person/km ²)	1,338.9
Workforce	113,024
Number of job seekers	5,622
Unemployment rate (%)	4.8

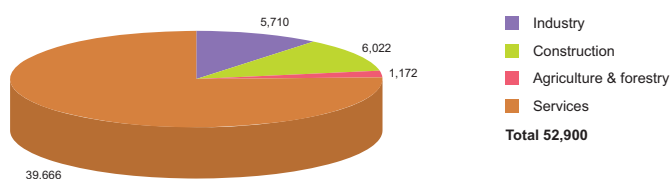
Source: Czech Statistical Office, Ministry of Labour and Social Affairs

NUMBER OF JOB SEEKERS ACCORDING TO EDUCATION



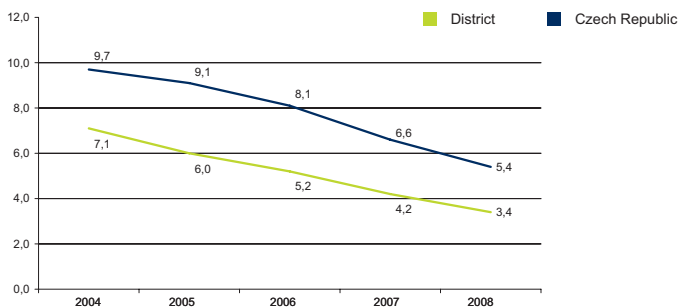
Source: Ministry of Labour and Social Affairs

NUMBER OF ECONOMIC UNITS ACCORDING TO PREVAILING ACTIVITY



Source: Czech Statistical Office

UNEMPLOYMENT - 5 YEAR TREND (%/YEAR)



Source: Czech Statistical Office

FOREIGN DIRECT INVESTMENT

	FDI (CZK)	FDI (EUR)
Plzeň-city	37 838 640	1 421 437
CR (total)	2 032 111 185	76 337 761
Prague	1 049 062 899	39 408 824
Plzen Average	8 459 342	317 781

Source: Czech National Bank

IMPORTANT COMPANIES IN THE DISTRICT ACCORDING TO TURNOVER

Name of company	Location	Employees	Activity (Sector)	Turnover	www
Západočeská plynárenská, a.s.	Plzeň 3 - Jižní Předměstí	250 - 499	Distribution and trade of gaseous fuels through mains	6 340	www.rwe-zcp.cz
PILSEN STEEL s.r.o.	Plzeň 3 - Jižní Předměstí	250 - 499	Casting of steel	6 015	www.pilsensteel.cz
Jtekt Automotive Czech Plzen, s.r.o.	Plzeň 3 - Skvrňany	500 - 999	Manufacture of parts and accessories for motor vehicles and their engines	5 076	www.jtekt.cz
Lasselsberger, a.s.	Plzeň 3 - Jižní Předměstí	3000 - 3999	Manufacture of ceramic tiles and flags	4 962	www.rako.cz
Škoda Power, a.s.	Plzeň 3 - Jižní Předměstí	500 - 999	Manufacture of engines and turbines, except aircraft, vehicle and cycle engines	4 766	www.skoda.cz/power
Škoda Transportation, s.r.o.	Plzeň 3 - Jižní Předměstí	500 - 999	Manufacture of railway and tramway locomotives and rolling stock	4 393	www.skoda.cz/transportation
Yazaki Wiring Technologies Czech, s.r.o.	Plzeň 2-Slovany - Božkov	2500 - 2999	Manufacture of electrical equipment for engines and vehicles n.e.c.	3 703	www.yazaki-czech.cz
HP - Pelzer k. s.	Plzeň - Křimice	1000 - 1499	Manufacture of parts and accessories for motor vehicles and their engines	3 416	www.pelzer.de
Eurowex, s.r.o.	Plzeň 1 - Severní Předměstí	n/a	Activities auxiliary to financial intermediation n.e.c.	3 015	www.eurowex.cz
Škoda JS, a.s.	Plzeň	500 - 999	Manufacture of steam generators, except central heating hot water boilers	2 860	www.skoda-js.cz
Masokombinát Plzeň, s.r.o.	Plzeň 3 - Východní Předměstí	200 - 249	Production, processing and preserving of meat and meat products	2 743	www.schneider-group.eu
Brush SEM, s.r.o.	Plzeň 3 - Doudlevice	500 - 999	Manufacture of electric motors, generators and transformers	2 382	www.brush.eu
Škoda Electric, s.r.o.	Plzeň 3 - Jižní Předměstí	500 - 999	Manufacture of electric motors, generators and transformers	2 281	www.skoda.cz
Berger Bohemia a. s.	Plzeň 3 - Litice	n/a	Construction of motorways, roads, airfields and sport facilities	2 006	www.berger-holding.com
Plzeňská teplárenská, a.s.	Plzeň 4 - Východní Předměstí	250 - 499	Steam and hot water supply	1 879	www.pltep.cz
Škoda Machine Tool, s.r.o.	Plzeň 3 - Jižní Předměstí	250 - 499	Manufacture of other metalworking machine tools	1 791	www.skoda.cz/machinetool
InterCora, s.r.o.	Plzeň 1 - Severní Předměstí	20 - 24	Letting of own property	1 683	www.intercora.cz
ZČP Net, s.r.o.	Plzeň 3 - Jižní Předměstí	20 - 24	Letting of own property	1 624	www.rwe-zcpnet.cz
Petrol Plzeň, s.r.o.	Plzeň 3 - Jižní Předměstí	6 - 9	Retail sale of automotive fuel	1 523	www.petrol-plzen.cz
Tank ONO, s.r.o.	Plzeň 3 - Skvrňany	100 - 199	Retail sale of automotive fuel	1500 mil. and more	www.tank-ono.cz

Source: Albertina Company Monitor

DISTRICT PLZEŇ-NORTH



BASIC DATA

Land Area	1,314 km ²
-----------	-----------------------

TOWNS WITH POPULATION OVER 5,000

Nýřany	6,999
--------	-------

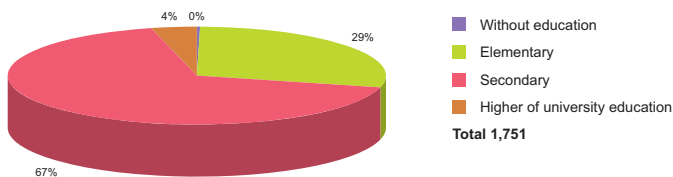
Source: Czech Statistical Office

ACTUAL SITUATION ON LABOUR MARKET

Population	73,955
Percentage in the total population of Czech Republic (%)	13.0
Population density (person/km ²)	56.3
Workforce	41,136
Number of job seekers	2,661
Unemployment rate (%)	6.3

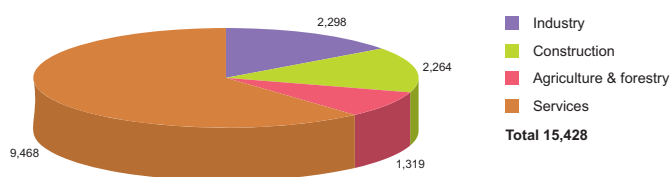
Source: Czech Statistical Office, Ministry of Labour and Social Affairs

NUMBER OF JOB SEEKERS ACCORDING TO EDUCATION



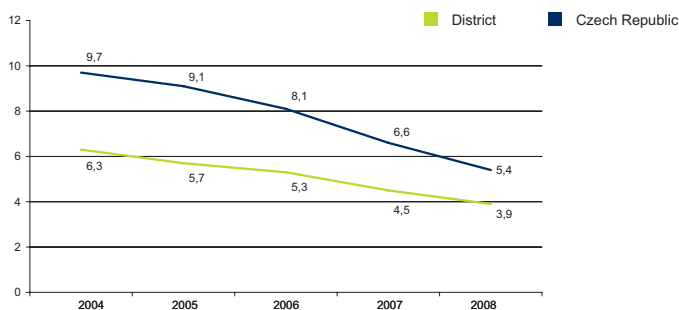
Source: Ministry of Labour and Social Affairs

NUMBER OF ECONOMIC UNITS ACCORDING TO PREVAILING ACTIVITY



Source: Czech Statistical Office

UNEMPLOYMENT - 5 YEAR TREND (%/YEAR)



Source: Czech Statistical Office

FOREIGN DIRECT INVESTMENT

	FDI (CZK)	FDI (EUR)
Plzeň-north	3 669 694	137 855
CR (total)	2 032 111 185	76 337 761
Prague	1 049 062 899	39 408 824
Plzeň Average	8 459 342	317 781

Source: Czech National Bank

IMPORTANT COMPANIES IN THE DISTRICT ACCORDING TO TURNOVER

Name of company	Location	Employees	Activity (Sector)	Turnover	www
LB Minerals, s.r.o.	Horní Bříza	n/a	Manufacture of other non-metallic mineral products	1500 mil. and more	
AIR Power, s.r.o.	Chrást	100 - 199	Manufacture of machinery for the production and use of mechanical power, except aircraft, vehicle and cycle engines	1 323	
Best, a.s.	Rybnice	250 - 499	Manufacture of concrete products for construction purposes	1 080	www.best.info
NET Kralovice, s.r.o.	Kralovice	100 - 199	Operation of dairies and cheese making	896	www.mlekarna-kralovice.cz
Kimos com.-CZ, s.r.o.	Třemošná	10 - 19	Other retail sale in specialized stores	862	www.kimos.cz
Dioss Nýřany, a.s.	Nýřany	1000 - 1499	Manufacture of accumulators, primary cells and primary batteries	602	www.dioss-ny.cz
Gührling společnost s ručením omezeným	Lině	n/a	Manufacture of tools	542	www.guehring.cz
Stölzle - Union, s.r.o.	Heřmanova Huť - Vlkýš	100 - 199	Manufacture of household and ornamental glassware	426	www.stoelzle.com
Neva Západní Čechy, s.r.o.	Všeruby u Plzně	10 - 19	Other retail sale in non-specialized stores	401	www.dafrucksneva.cz
Kreiner, s.r.o.	Vejpřice	50 - 99	Wholesale of hardware, plumbing and heating equipment and supplies	393	www.kreiner.cz
Hansa Česko, s.r.o.	Kralovice	n/a	Other retail sale in specialized stores	388	
GHP Direct Mail, s. r. o.	Kozojedy	n/a	Advertising	373	www.ghp.cz
Trio - D, s.r.o.	Plzeň 9 - Malesice	10 - 19	Other retail sale in specialized stores	300 - 499 mil.	
Rexam Beverage Can Czech Republic, s.r.	Dýšina	50 - 99	Manufacture of light metal packaging	300 - 499 mil.	www.rexam.com
Reks Plzeň, s.r.o.	Plzeň - Třemošná	n/a	Manufacture of electric motors, generators and transformers	300 - 499 mil.	www.reks.cz
Pebal, s.r.o.	Třemošná	50 - 99	Other retail sale in specialized stores	300 - 499 mil.	www.pebal.cz
Meiller direct cz, s.r.o.	Nýřany	250 - 499	Secretarial and translation activities	300 - 499 mil.	www.meiller.cz
Lesní společnost Plasy, a.s.	Plasy	n/a	Forestry, logging and related service activities	300 - 499 mil.	www.lasplasy.cz
Jednota, spotřební družstvo Plasy	Plasy	250 - 499	Retail sale in non-specialized stores with food, beverages or tobacco predominating	300 - 499 mil.	www.jednotaplasy.cz
Gerresheimer Wilden Dysina, s.r.o.	Dýšina	n/a	Manufacture of plastic products	300 - 499 mil.	

DISTRICT ROKYCANY

BASIC DATA

Land Area	575 km ²
-----------	---------------------

TOWNS WITH POPULATION OVER 5,000

Rokycany	14,062
----------	--------

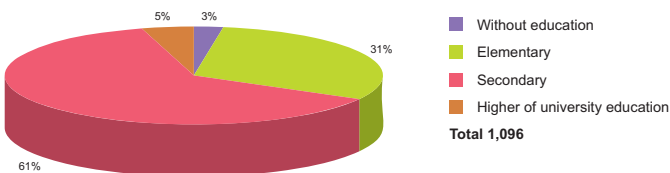
Source: Czech Statistical Office

ACTUAL SITUATION ON LABOUR MARKET

Population	47,299
Percentage in the total population of Czech Republic (%)	8.3
Population density (person/km ²)	82.3
Workforce	24,619
Number of job seekers	1,763
Unemployment rate (%)	6.9

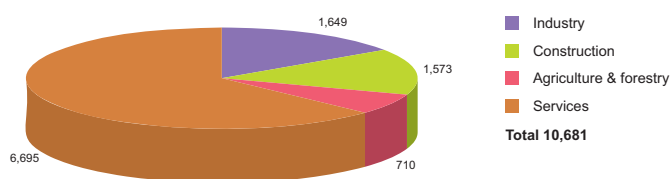
Source: Czech Statistical Office, Ministry of Labour and Social Affairs

NUMBER OF JOB SEEKERS ACCORDING TO EDUCATION



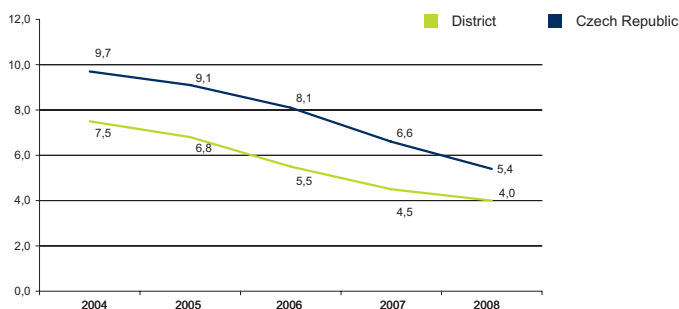
Source: Ministry of Labour and Social Affairs

NUMBER OF ECONOMIC UNITS ACCORDING TO PREVAILING ACTIVITY



Source: Czech Statistical Office

UNEMPLOYMENT - 5 YEAR TREND (%/YEAR)



Source: Czech Statistical Office

FOREIGN DIRECT INVESTMENT

	FDI (CZK)	FDI (EUR)
Rokycany	2 424 757	91 088
CR (total)	2 032 111 185	76 337 761
Prague	1 049 062 899	39 408 824
Plzen Average	8 459 342	317 781

Source: Czech National Bank

IMPORTANT COMPANIES IN THE DISTRICT ACCORDING TO TURNOVER

Name of company	Location	Employees	Activity (Sector)	Turnover	www
Borgers CS, s.r.o.	Rokycany	2000 - 2499	Manufacture of other plastic products	3 939	www.borgers-group.com
Hutchinson, s.r.o.	Rokycany - Plzeňské Předměstí	500 - 999	Manufacture of other rubber products	1 719	www.hutchinsonrubber.com
Prowell, s.r.o.	Rokycany - Plzeňské Předměstí	50 - 99	Manufacture of corrugated paper and paperboard	1500 mil. and more	
Geis CZ, s.r.o.	Ejovice	250 - 499	Activities of other transport agencies	1500 mil. and more	www.geis.cz
EuWe Eugen Wexler ČR, s.r.o.	Rokycany - Nové Město	n/a	Manufacture of plastic components for productive consumption	1 048	www.euwe.de
Monteferro Hrádek a. s.	Hrádek - Nová Huť	100 - 199	General mechanical engineering	1 005	www.monteferro.it
Duvenbeck Logistik, s.r.o.	Volduchy	100 - 199	Activities of other transport agencies	1000 - 1499 mil.	www.duvenbeck.de
Primalex, a.s.	Břasy	100 - 199	Manufacture of paints, varnishes and similar coatings, printing ink and mastics	706	www.primalex.cz
Kovohutě Rokycany, a. s.	Rokycany - Nové Město	100 - 199	Copper production	562	www.koro.cz
Železářny Hrádek a. s.	Hrádek - Nová Huť	250 - 499	Renting of other machinery and equipment n.e.c.	500 - 999 mil.	www.zhr.cz
General Parcel Čechy, s.r.o.	Ejovice	20 - 24	Activities of other transport agencies	319	www.generalparcel.cz
Westtransport Plzeň a. s.	Rokycany - Nové Město	100 - 199	Freight transport by road	316	www.westtransport.cz
Šabata, s.r.o.	Rokycany - Nové Město	50 - 99	Wholesale of wood, construction materials and sanitary equipment	300 - 499 mil.	www.sabata.cz
Berdych plus, s.r.o.	Rokycany - Nové Město	50 - 99	General construction of buildings and civil engineering works	300 - 499 mil.	www.berdych.cz
B.A.F. centrum s.r.o.	Rokycany - Plzeňské Předměstí	20 - 24	Wholesale of tobacco products	300 - 499 mil.	
Ing. Matas - Slévárna Strašice, s.r.o.	Strašice	100 - 199	Casting of iron	233	
SMS CZ, s.r.o.	Rokycany - Střed	n/a	Manufacture of other agricultural and forestry machinery	231	www.smscz.cz
Weiler Holoubkov, s.r.o.	Holoubkov	250 - 499	Manufacture of other metalworking machine tools	200 - 299 mil.	www.weilercz.com
DCK Holoubkov Bohemia, a.s.	Holoubkov	50 - 99	Manufacture of electricity distribution and control apparatus	200 - 299 mil.	www.dck.cz
allkabel, s.r.o.	Cheznovice	n/a	Other wholesale	154	www.allkabel.cz

DISTRICT TACHOV

BASIC DATA	
Land Area	1,379 km ²

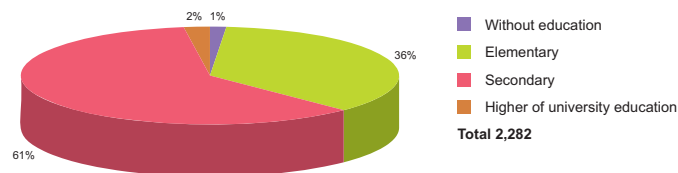
TOWNS WITH POPULATION OVER 5,000	
Tachov	12,557
Stříbro	7,766
Planá	5,539

Source: Czech Statistical Office

ACTUAL SITUATION ON LABOUR MARKET	
Population	53,303
Percentage in the total population of Czech Republic (%)	9.4
Population density (person/km ²)	38.7
Workforce	32,688
Number of job seekers	3,698
Unemployment rate (%)	11.3

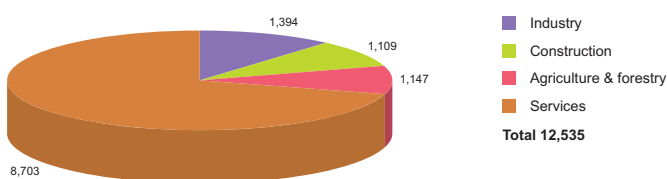
Source: Czech Statistical Office, Ministry of Labour and Social Affairs

NUMBER OF JOB SEEKERS ACCORDING TO EDUCATION



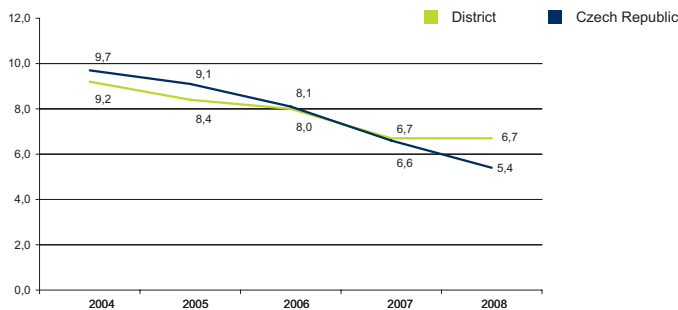
Source: Ministry of Labour and Social Affairs

NUMBER OF ECONOMIC UNITS ACCORDING TO PREVAILING ACTIVITY



Source: Czech Statistical Office

UNEMPLOYMENT - 5 YEAR TREND (%/YEAR)



Source: Czech Statistical Office

FOREIGN DIRECT INVESTMENT

	FDI (CZK)	FDI (EUR)
Tachov	5 305 470	199 304
CR (total)	2 032 111 185	76 337 761
Prague	1 049 062 899	39 408 824
Plzen Average	8 459 342	317 781

Source: Czech National Bank

IMPORTANT COMPANIES IN THE DISTRICT ACCORDING TO TURNOVER

Name of company	Location	Employees	Activity (Sector)	Turnover	www
Alcoa Fujikura Czech, s.r.o.	Stříbro	1500 - 1999	Manufacture of electrical equipment for engines and vehicles n.e.c.	2 426	www.alcoa.com
Stora Enso Timber Planá, s.r.o.	Planá	250 - 499	Sawmilling and planing of wood; impregnation of wood	2 409	www.storaenso.com
Willi Betz Logistik, s.r.o.	Bor - Vysočany	n/a	Activities of other transport agencies	1 682	
Ideal Automotive Bor, s.r.o.	Bor - Nová Hospoda	500 - 999	Manufacture of parts and accessories for motor vehicles and their engines	1 572	www.ideal-group.com
Kermi, s.r.o.	Stříbro	n/a	Manufacture of central heating radiators and boilers	1 321	www.kermi.cz
Ehrmann Stříbro, s.r.o.	Stříbro	100 - 199	Operation of dairies and cheese making	1 044	www.ehrmann.cz
Key Plastics Czech, s.r.o., člen skupiny	Tachov - Vítkov	250 - 499	Manufacture of plastic products	1 037	www.kendrion.cz
Eissmann Automotive Česká republika,	Bor - Vysočany	n/a	Tanning and dressing of leather	913	
Konfektion E - CZ, s.r.o.	Staré Sediště	250 - 499	Manufacture of other electrical equipment n.e.c.	752	www.konfektion-e.de
Lesní společnost Stříbro, a.s.	Stříbro	100 - 199	Forestry	738	
Agroservis Tachov, a. s.	Bor	100 - 199	Accounting, book-keeping and auditing activities; tax consultancy	626	www.agroservistachov.cz
Novasport, s.r.o.	Tachov	200 - 249	Manufacture of sports goods	500 - 999 mil.	
SIT-Scherm International Transports, s.r.o.	Bor - Průmyslový areál Vysočany	50 - 99	Sale of motor vehicles	455	
Vega Trucks, s.r.o.	Tachov	25 - 49	Wholesale on a fee or contract basis	438	www.vegatrucks.cz
Euroserum, s.r.o.	Stříbro	50 - 99	Operation of dairies and cheese making	428	www.euroserum.com
Inotech ČR, s.r.o.	Tachov - Oldřichov	100 - 199	Manufacture of other plastic products	348	www.inotech.cz
Tien Pham Dinh	Planá	n/a	Activities auxiliary to financial intermediation n.e.c.	300 - 499 mil.	
Lesní společnost Přimda, a.s.	Přimda	200 - 249	Forestry and logging	300 - 499 mil.	www.lasprimda.cz
Jednota, spotřební družstvo v Tachově	Tachov	250 - 499	Retail sale in non-specialized stores with food, beverages or tobacco predominating	300 - 499 mil.	
BHS Corrugated Fertigungs, Montage,	Tachov	n/a	Other retail sale in non-specialized stores	300 - 499 mil.	www.bhs-corrugated.com