

SOUTH BOHEMIA REGION

DISTRICT ČESKÉ BUDĚJOVICE
 DISTRICT ČESKÝ KRUMLOV
 DISTRICT JINDŘICHŮV HRADEC
 DISTRICT PÍSEK
 DISTRICT PRACHATICE
 DISTRICT STRAKONICE
 DISTRICT TÁBOR



ABOUT REGION

The region of South Bohemia is situated on the boundary with Bavaria and Austria. Its neighbors are Kraj Vysočina (Vysočina Region), Plzeňský kraj (Plzeň Region), Středočeský kraj (Central Bohemia) and Jihomoravský kraj (South Moravia Region). There are seven districts in this region: České Budějovice, Český Krumlov, Jindřichův Hradec, Písek, Prachatice, Strakonice and Tábor. The area of South Bohemia is 10,057 km² which is 12.8 % of Czech Republic territory. South Bohemia is the second largest region in the country but only the seventh most populated – in H1 2009 there were only 636,030 inhabitants living in South Bohemia (about 6 % of the population in the Czech Republic). České Budějovice is the capital of South Bohemia with a population of 95,071. There are 20 towns with populations exceeding 5,000 in the region.

Tourists coming to South Bohemia seek its well preserved nature. There is the national park Šumava and three other sanctuaries in the region. South Bohemia has areas that are well disposed for outdoor sports in the summer (Lipno reservoir, Třeboň with its ponds and the Vltava valley) and in winter there are skiing resorts in the Šumava Mountains. Fairs of national importance are organized every year in the city of České Budějovice.

Two of South Bohemia's landmarks are on the UNESCO World Heritage List – the medieval downtown of Český Krumlov and "rural baroque" sanctuary in Holašovice village. The town of Slavonice and the complex of ponds in the Třeboň area are also contending for a place on UNESCO list. České Budějovice, Jindřichův Hradec, Tábor and Třeboň are protected by law as

urban sanctuaries. The most visited castles in South Bohemia are Hluboká nad Vltavou, Český Krumlov, Orlík and Zvíkov. "Jelení" bridge in the town of Písek dates from the end of the 13th century and is the oldest existing bridge built of stones on Czech territory.

Jihočeská univerzita (University of South Bohemia; JČU) has seven colleges. Mainly local works in disciplines linked to agriculture and biology have national importance. Prague's VŠE College of management is located in Jindřichův Hradec and in České Budějovice there are two institutes of the Academy of Sciences of the CR: The Biology Center and the Institute of Systems of Biology and Ecology.

Thanks to the long local tradition in fishpond cultivation South Bohemia economy is marked with a high participation in this primary sector. Other traditional domains are construction, machinery and the food industry. A typical feature of South Bohemia's economy is a high number of industrial clusters.

The most developed industries are those in waterworks technologies, renewable resources of energy, and construction materials production. South Bohemia has its potential in preserved nature, numerous landmarks, a relatively advantageous age structure of the population, a contemplated construction of a railway corridor and a highway leading to České Budějovice, sufficiency of accommodation capacity in mountain areas, numerous expositions and fairs, the opening of new border check points, building of new thematic industrial clusters and research and development in biology and farming.

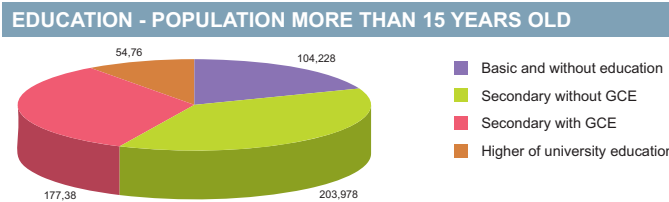
BASIC DATA	
Land Area	10,057 km ²

ACTUAL SITUATION ON LABOUR MARKET	
Population	636,030
Percentage in the total population of Czech Republic (%)	6.1
Population density (person/km ²)	63.2
Workforce	342,099
Number of job seekers	22,359
Unemployment rate (%)	6.3

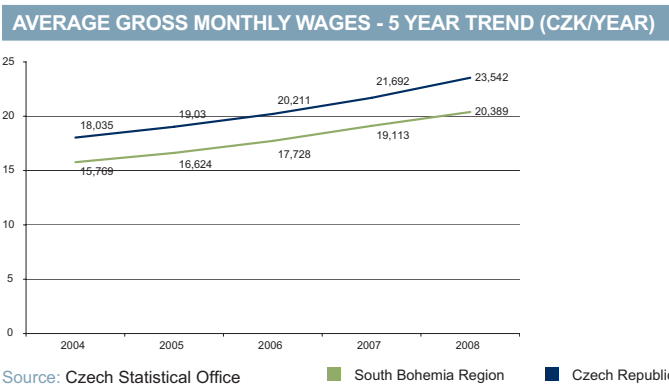
Source: Czech Statistical Office, Ministry of Labour and Social Affairs

NUMBER OF ECONOMIC UNITS ACCORDING TO PREVAILING ACTIVITY	
Total	151,989
Industry	19,610
Construction	19,691
Agriculture & forestry	13,711
Services	98,128

Source: Czech Statistical Office



Source: Czech Statistical Office



Source: Czech Statistical Office

GDP BY REGIONS				
Region	TOTAL		Per capita	
	mln. CZK	mln. EUR	Total CZK	Total EUR
South Bohemia	189 516	7 598	300 158	10 810
Average GDP for Czech regions	252 161	10 110	341 989	13 711
Share in GDP of the Czech Republic	5%			

Source: Czech Statistical Office

AVERAGE GROSS MONTHLY WAGES - 5 YEAR TREND										
Year	2004		2005		2006		2007		2008	
	CZK	EUR	CZK	EUR	CZK	EUR	CZK	EUR	CZK	EUR
South Bohemia	15,769	494	16,624	558	17,728	625	19,113	688	20,389	817
Average for Czech Republic	18,035	565	19,030	639	20,211	713	21,692	781	23,542	944

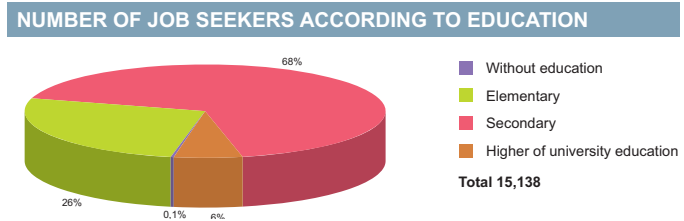
Source: Czech Statistical Office

ADMINISTRATIVE BREAKDOWN	
Number of districts	7
Number of municipalities	623
of that, number of towns	53

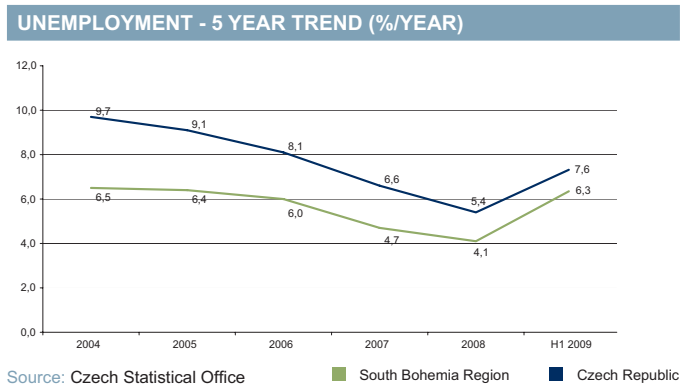
Source: Czech Statistical Office

NUMBER OF EMPLOYEES AND GROSS MONTHLY WAGES IN MANUFACTURING ACCORDING TO NACE CLASSIFICATION		
	Number of employees	Wages (EUR)
Manufacturing	48,918	858
Man. of food products, beverages and tobacco products	6,423	777
Man. of chemical, chemical products, pharmaceuticals, and chemical fibres	1,542	911
Man. of rubber and plastic products	3,263	886
Man. of basic metals and fabricated metal products	5,160	851
Man. and repairs of machinery and equipment	7,191	951
Man. of electrical and optical equipment	7,532	730
Man. of transport equipment	6,713	1,049

Source: Czech Statistical Office



Source: Ministry of Labour and Social Affairs



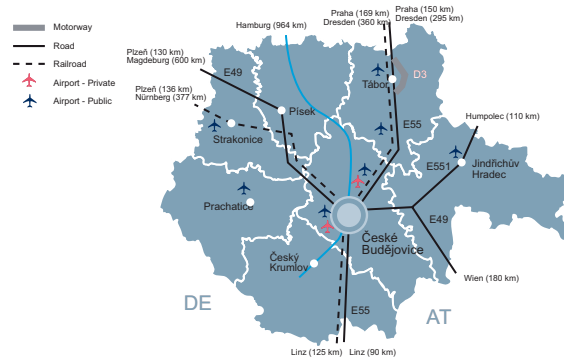
Source: Czech Statistical Office

FOREIGN DIRECT INVESTMENT		
Region	FDI (CZK)	FDI (EUR)
min.	17 940 192	673 937
South Bohemia	71 092 440	2 670 640
max.	1 049 062 899	39 408 824
Average	145 150 799	5 452 697

Source: Czech National Bank

	Specification		
	Public/Private	Civil/Military/ Varied	International/Intranational
České Budějovice	Private	Civil	International
České Budějovice	Public	Civil	Intranational
Hosín	Public	Civil	Intranational
Hosín	Private	Civil	International
Jindřichův Hradec	Public	Civil	Intranational
Soběslav	Public	Civil	Intranational
Strakonice	Public	Civil	Intranational
Strunkovice	Public	Civil	Intranational
Tábor	Public	Civil	Intranational

Source: Ministry of Transport, Aerobaze.cz



SCHOOL SYSTEM			
	Number of schools	Number of students	Number of graduates
Secondary schools			
Technical fields	n/a	10 302	2 457
Economic fields	n/a	9 378	2 298
ICT fields	n/a	2 825	707
Higher schools			
Technical fields	n/a	829	194
Economic fields	n/a	785	244
ICT fields	n/a	167	48
Universities			
Technical fields	1	620	127
Economic fields	1	1 719	373
ICT fields	1	596	81

Source: Institute for Information on Education

LABOUR OFFICE				
City	Address	Phone	Fax	E-mail
České Budějovice	Klavíkova 1570/7, 370 04 České Budějovice 4	387 709 111	387 315 267	cbudejovice@cb.mpsv.cz
Český Krumlov	Věncova 248, 381 01 Český Krumlov 1	380 303 888	380 728 935	ckrumlov@ck.mpsv.cz
Jindřichův Hradec	Janderova 147, 377 01 Jindřichův Hradec 1	950 124 111	950 124 302	posta@jh.mpsv.cz
Písek	Nábřeží 1. máje 2259, 397 01 Písek 1	382 756 111	382 215 250	posta.up@pi.mpsv.cz
Prachovice	Poštovní 113, 383 01 Prachovice	388 380 111	388 311 189	prachovice.up@pt.mpsv.cz
Strakonice	Textiláků 393, 386 01 Strakonice 1	950 162 111	383 324 490	strakonice.up@st.mpsv.cz
Tábor	Husovo nám. 2938, 390 02 Tábor 2	950 165 111	950 165 302	tabor@ta.mpsv.cz

Source: Ministry of Labour and Social Affairs

KNOWLEDGE OF FOREIGN LANGUAGES			
LANGUAGE	ALL SKILLS LEVEL (%)	LANGUAGE	ALL SKILLS LEVEL (%)
English	47.2	Spanish	4.7
German	53.5	Polish	5.5
French	5.5	Russian	41.7
Italian	1.6	Nordic languages	0.8

Source: Augur Consulting

TEBODIN
Consultants & Engineers

www.tebodin.com

We offer our services to Czech and international clients from private and public sector:

PROJECT MANAGEMENT

CONSULTANCY

DESIGN & PERMITTING

PROCUREMENT

CONSTRUCTION MANAGEMENT

COMMISSIONING

Branch offices - Prague, Pardubice, Ostrava

info@tebodin.cz

We are active in the following markets:

- Industrial plants
- Commercial & Residential Buildings
- Process Units & Pipelines
- Infrastructure
- Power & Heat

www.tebodin.cz

IMPORTANT COMPANIES IN THE REGION ACCORDING TO TURNOVER							
Name of company	Location	Employees	Activity (Sector)	Turnover	Phone	E-mail	WWW
E.ON Energie, a.s.	České Budějovice 7	100 - 199	Production of electricity	33 611	545 142 427, 387 861 111	info@eon.cz	www.eon.cz
Robert Bosch, s.r.o.	České Budějovice 5	1500 - 1999	Manufacture of parts and accessories for motor vehicles and their engines	10 026	261 300 211, 380 404 923	pavel.roman@cz.bosch.com	www.bosch.cz
Madeta a. s.	České Budějovice 4	1500 - 1999	Operation of dairies and cheese making	7 359	387 411 952, 387 411 948	madeta@madeta.cz	www.madeta.cz
Schneider Electric, a.s.	Písek	500 - 999	Manufacture of electricity distribution and control apparatus	4 151	382 760 111, 382 272 181	info@cz.schneider-electric.com	www.schneider-electric.cz
Silon, s.r.o.	Planá nad Lužnicí	n/a	Real estate agencies	3 667	381 291 197, 381 291 064	silon@silon.eu	www.silon.eu
Wienerberger cihlářský průmysl, a.s.	České Budějovice 1	250 - 499	Manufacture of bricks, tiles and construction products, in baked clay	3 399	387 766 314, 387 766 318	info@wienerberger.cz	www.porotherm.cz
TRW - DAS, a.s.	Dačice III	500 - 999	Manufacture of parts and accessories for motor vehicles and their engines	3 185	384 456 451, 384 456 892	aftermarket.cz@trw.com	www.trwauto.cz
Maso Planá, a.s.	Planá nad Lužnicí	250 - 499	Production and preserving of meat	2 362	381 419 304, 381 419 303	sekret@masoplana.cz	www.masoplana.cz
Budějovický Budvar, národní podnik	České Budějovice 3	500 - 999	Manufacture of beer	2 301	387 311 168, 387 705 200	budvar@budvar.cz	www.budvar.tv, www.pardal.cz
ČSAD Jihotrans, a.s.	České Budějovice 3	1000 - 1499	Freight transport by road	2 060	389 009 143, 389 009 127	salvia@salvia.cz	www.jihotrans.cz
Jednota, společníci družstvo	České Budějovice 7	500 - 999	Retail sale in non-specialized stores with food, beverages or tobacco predominating	1 913	386 790 145, 387 412 543	info@jednotacb.cz	www.jednotacb.cz
Aisin Europe Manufacturing Czech, s.r.o.	Písek	250 - 499	Manufacture of machinery for the production and use of mechanical power, except aircraft, vehicle and cycle engines	1 837	382 909 382, 382 909 111	info@aisin.co.cz	www.aisin.co.cz
Heluz cihlářský průmysl, v.o.s.	Dolní Bukovsko	250 - 499	Manufacture of bricks, tiles and construction products, in baked clay	1 788	385 793 012, 385 793 041	odbyt@heluz.cz	www.heluz.cz
Magna Cartech, s.r.o.	České Velenice	250 - 499	Forging, pressing, stamping and roll forming of metal; powder metallurgy	1 761	384 753 201, 384 795 080		www.magnacartech.com
Kovosvit MAS, a.s.	Sezimovo Ústí	1000 - 1499	Manufacture of machine tools	1 721	381 632 201, 381 632 300	mas@kovosvit.cz	www.kovosvit.cz
ZVZ, a. s.	Milevsko	1000 - 1499	Manufacture of non-domestic cooling and ventilation equipment	1 719	382 551 111, 382 552 836	zvz@zvz.cz	www.zvz.cz
JCL - obchod, a.s.	České Budějovice 4	10 - 19	Wholesale of wood, construction materials and sanitary equipment	1 625	387 713 299, 387 713 266	jcl-obchod@jcl-obchod.cz	www.jcl-obchod.cz
BOHEMIA ASFALT, s.r.o.	Soběslav II	100 - 199	Manufacture of other non-metallic mineral products n.e.c.	1 608	381 541 192, 381 541 111	cmo@bauholding.cz	
Waldviertler Sparkasse von 1842	Jindřichův Hradec II	100 - 199	Other monetary intermediation	1500 mil. and more	384 344 111, 384 344 108	info@wspk.cz	www.wspk.cz

Source: Albertina Company Monitor

IMPORTANT CONTACTS IN THE REGION

Regional Council

U Zimního stadionu 1952/2, 370 76 Č. Budějovice
tel.: 386 720 111
fax: 386 359 049
Email: podatelna@kraj-jihocesky.cz
URL: www.kraj-jihocesky.cz

City Hall - České Budějovice

nám. Přemysla Otakara II. č. 1,
370 92 České Budějovice
tel.: 386 801 804, 386 801 805, 386 801 807
Email: posta@c-budejovice.cz
URL: www.c-budejovice.cz

CzechInvest

Regionální kancelář/Regional Office

Husova 5, 370 01 České Budějovice
tel.: 387 962 413
fax: 387 962 424
Email: ceskebudejovice@czechinvest.org
Contact persons: Ing. Robert Bártů, Ing. Tomáš Severa, Martina Trajerová BBUS.

Regional Development Agency of the South Bohemia, RERA a.s.

Boženy Němcové 49/3, 370 01 České Budějovice
tel.: 386 720 858
fax: 386 720 860
Email: rera@rera.cz, info@rera.cz
URL: www.rera.cz

Regional Development Agency Šumava, o.p.s.

Stachy 422, 384 73 Stachy
tel.: 380 120 261
fax: 380 120 272
Email: info@rras.cz
URL: www.rra-sumava.cz

CzechTrade - Regional Information Place

Husova 9, 370 01 České Budějovice
tel.: 387 699 318, 724 613 802
fax: 387 318 431
Email: cbudejovice-czechtrade@komora.cz
URL: www.jhk.cz
Contact person: Mgr. Pavel Šímanek

Jihočeská Hospodářská Komora/South Bohemian Economic Chamber

Husova 9, 370 01 České Budějovice
tel.: 387 318 433
fax: 387 318 431
URL: www.jhk.cz
Contact person: Ing. Jiří Stráský

UTILITIES

GAS

E.ON Česká republika

F. A. Gerstnera 2151/6, 370 49 České Budějovice
tel.: 840 111 333
Email: info@eon.cz
URL: www.eon.cz

ELECTRICITY

E.ON Česká republika

F. A. Gerstnera 2151/6, 370 49 České Budějovice
tel.: 840 111 333
Email: info@eon.cz
URL: www.eon.cz

WATER AND SEWER SYSTEM

Vodovody a kanalizace Jižní Čechy, a.s.

B. Němcové 12/2, 370 80 České Budějovice
tel.: 389 132 111, 844 844 870
fax: 389 132 395
Email: vakjc@cb.vakjc.cz
URL: www.vakjc.cz

JVS, a.s.

Severní 8/2264, 370 10 České Budějovice
tel.: 387 761 911, fax: 387 761 225
Email: 1.jvs@1jvs.cz
URL: www.1jvs.cz

HEAT

AES Bohemia spol. s r.o.

Průmyslová 748, 391 02 Sezimovo Ústí 2
tel.: 381 732 400
Email: eva.hlubocka@aes.com
URL: www.aes.com

Teplárna České Budějovice, a.s.

Novohradská 32, 372 15 České Budějovice
tel.: 389 003 111
fax: 389 003 456
Email: info@teplarna-cb.cz
URL: www.teplarna-cb.cz

Teplárna Písek, a.s.

U Smrkovické silnice 2263, 397 01 Písek
tel.: 382 730 111
fax: 382 265 959
Email: teplarna.pisek@tpi.cz
URL: www.tpi.cz

Teplárna Strakonice, a.s.

Komenského 59, 386 43 Strakonice
tel.: 383 318 111
fax: 383 324 651
Email: tst@tst.cz
URL: www.tst.cz

Teplárna Tábor, a.s.

U Cihelny 2128, Tábor
tel.: 381 417 202
fax: 381 417 286, 381 417 247
Email: info@tta.cz
URL: www.tta.cz

SELECTED CZECHINVEST PROJECTS IN THE REGION

Name	Location	Investor	Country	Sector	Year
A. Pöttinger, spol. s r.o.	Vodňany	A. Pöttinger, Maschinefabrik, GmbH	Austria	engineering	2007
AISIN EUROPE MANUFACTURING CZECH s.r.o.	Písek	Aisin	Japan	manufacture of motor vehicles	2002
DURA Automotive CZ, s.r.o.	Blatná	Dura Automotive systems	USA	manufacture of motor vehicles	2000
Engel strojírenská spol. s r.o.	n.s.	ENGEL	Austria	engineering	2006
Faurecia Automotive Czech Republic s.r.o.	Písek	FAURECIA	France	manufacture of motor vehicles	2005
HARTMANN - RICO a.s.	Havlíčkův Brod	Hartmann-Rico	Germany	other	2001
InTiCom Components Tschechien s.r.o.	Prachatice	InTiCom System	Germany	electronics, electrotechnics	2005
Jihočeský zemědělský lihovar, a.s.	Knín	Agroethanol	Luxembourg	chemistry, pharmacy	2005
KOH-I-NOOR HARDTMUTH a.s.	n.s.	KO-I-NOOR HARDTMUTH a.s.	Czech Republic	other	2008
KOVOSVIT MAS, a.s.	Sezimovo Ústí	KKCG SE	Cyprus	engineering	2008
Linde Pohony s.r.o.	Český Krumlov	Linde	Germany	engineering	2005
Longway Czech s.r.o.	Brno	Baolong	China	manufacture of motor vehicles	2008
METAL PROGRES Strakonice spol. s r.o.	Strakonice	Metalprogres	France	manufacture of motor vehicles	2001
Rhode & Schwarz závod Vimperk, s.r.o.	Vimperk	RUSA Rohde & Schwarz	Germany	manufacture of motor vehicles	2001
Robert Bosch, spol. s r.o.	České Budějovice	Bosch	Germany	manufacture of motor vehicles	2004
Schwan-STABILO ČR,s.r.o.	Český Krumlov	Schwan - STABILO	Germany	other	2001
Silon s.r.o.	Planá nad Lužnicí	Silon s.r.o.	Germany	chemistry, pharmacy	2007
Tieto Czech, s.r.o	České Budějovice	TietoEnator Consulting, a.s.	Czech Republic	IT, software development	2009
TRW - DAS a.s.	Dačice	TRW Automotive	Germany	manufacture of motor vehicles	2005
Wiegel CZ zárové zinkování s.r.o.	České Budějovice	Wiegel Tschechia	Germany	engineering	2001
Wincor Nixdorf s.r.o.	České Budějovice	Wincor Nixdorf s.r.o.	Czech Republic	IT, software development	2009

Source: CzechInvest

LIST OF UNIVERSITIES 2009

Name of school	WWW	Orientation	Titles awarded	Students
Filmová akademie Miroslava Ondříčka v Písku	www.filmovka.cz	Film	Bc.	90
Jihočeská univerzita v Českých Budějovicích	www.jcu.cz	Variety of programmes	Bc., Mgr., Ing., Ph.D.	11 728
Vysoká škola evropských a regionálních studií	www.vsers.cz	Variety of programmes	Bc.	631
Vysoká škola technická a ekonomická v Českých Budějovicích	www.vstecb.cz	Economic and management, construct, engineering	Bc.	529

Source: Institute for Information on Education

RENTS IN INDUSTRIAL PREMISES IN CR REGIONS (EUR/sqm/month)

South Bohemia Region	3,5-4,5
Note 1: Net effective rents for units ca 4,000 sq m which is average deal size in the market	
Note 2: Premises are immediately available only some regions.	



Source: CB Richard Ellis

PRIME RENTS IN SHOPPING CENTRES (EUR/sqm/month)

South Bohemia Region	20-30
Note: for units ca 100 sqm.	



Source: CB Richard Ellis

SELECTED INDUSTRIAL ZONES IN THE SOUTH BOHEMIA REGION

Industrial zone	Area (ha)
Blatná - Sádlov	10,00
České Budějovice - Boršov II	30,00
České Velenice	47,85
Český Krumlov - Domoradice	61,30
Milevsko - Dukelská	19,00
Milevsko - Hrejkovická	19,00
Písek - Čížovská	64,00
Planá nad Lužnicí	64,00
Prachatice - Krumlovská	10,25
Průmyslová zóna Sedlice	15,00

Source: CzechInvest

DISTRICT ČESKÉ BUDĚJOVICE



BASIC DATA

Land Area	1,626 km ²
-----------	-----------------------

TOWNS WITH POPULATION OVER 5,000

České Budějovice	95,071
Týn nad Vltavou	8,483

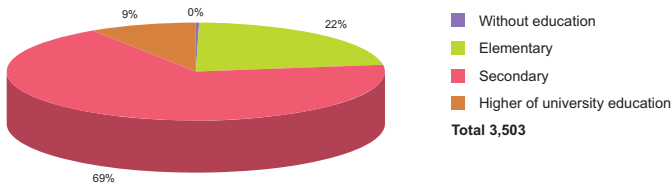
Source: Czech Statistical Office

ACTUAL SITUATION ON LABOUR MARKET

Population	185,517
Percentage in the total population of Czech Republic (%)	29.2
Population density (person/km ²)	114.1
Workforce	99,920
Number of job seekers	5,110
Unemployment rate (%)	4.9

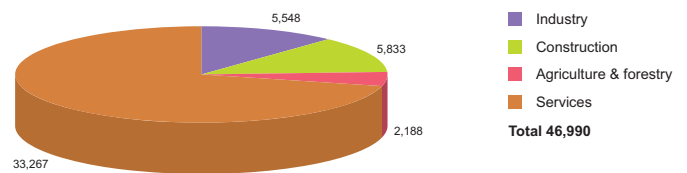
Source: Czech Statistical Office, Ministry of Labour and Social Affairs

NUMBER OF JOB SEEKERS ACCORDING TO EDUCATION



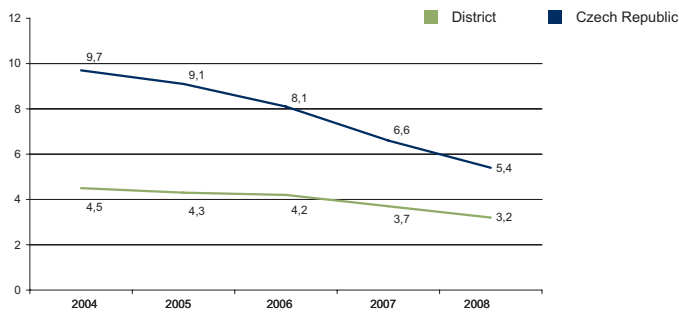
Source: Ministry of Labour and Social Affairs

NUMBER OF ECONOMIC UNITS ACCORDING TO PREVAILING ACTIVITY



Source: Czech Statistical Office

UNEMPLOYMENT - 5 YEAR TREND (%/YEAR)



Source: Czech Statistical Office

FOREIGN DIRECT INVESTMENT

	FDI (CZK)	FDI (EUR)
České Budějovice	51 015 510	1 916 435
CR (total)	2 032 111 185	76 337 761
Prague	1 049 062 899	39 408 824
South Bohemia Average	10 156 063	381 520

Source: Czech National Bank

IMPORTANT COMPANIES IN THE DISTRICT ACCORDING TO TURNOVER

Name of company	Location	Employees	Activity (Sector)	Turnover	www
E.ON Energie, a.s.	České Budějovice 7	100 - 199	Production of electricity	33611	www.eon.cz
Robert Bosch, s.r.o.	České Budějovice 5	1500 - 1999	Manufacture of parts and accessories for motor vehicles and their engines	10026	www.bosch.cz
Madeta a. s.	České Budějovice 4	1500 - 1999	Operation of dairies and cheese making	7359	www.madeta.cz
Wienerberger cihlářský průmysl, a.s.	České Budějovice 1	250 - 499	Manufacture of bricks, tiles and construction products, in baked clay	3399	www.porotherm.cz
Budějovický Budvar, národní podnik	České Budějovice 3	500 - 999	Manufacture of beer	2 301	www.budvar.tv
ČSAD Jihotrans, a.s.	České Budějovice 3	1000 - 1499	Freight transport by road	2 060	www.jihotrans.cz
Jednota, spotřební družstvo	České Budějovice 7	500 - 999	Retail sale in non-specialized stores with food, beverages or tobacco predominating	1 913	www.jednotacb.cz
Heluz cihlářský průmysl, v.o.s.	Dolní Bukovsko	250 - 499	Manufacture of bricks, tiles and construction products, in baked clay	1 788	www.heluz.cz
JCL - obchod, a.s.	České Budějovice 4	10 - 19	Wholesale of wood, construction materials and sanitary equipment	1 625	www.jcl-obchod.cz
Swietelsky stavební, s.r.o.	České Budějovice 3	500 - 999	Construction of motorways, roads, airfields and sport facilities	1500 mil. and more	www.swietelsky.cz

DISTRICT ČESKÝ KRUMLOV



BASIC DATA

Land Area	1,615 km ²
-----------	-----------------------

TOWNS WITH POPULATION OVER 5,000

Český Krumlov	13,752
Kaplice	7,310

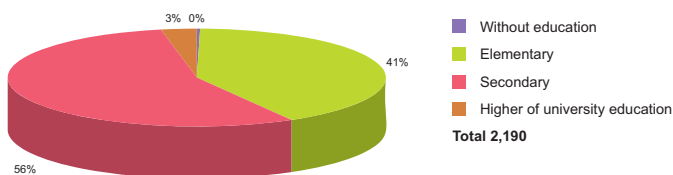
Source: Czech Statistical Office

ACTUAL SITUATION ON LABOUR MARKET

Population	61,504
Percentage in the total population of Czech Republic (%)	9.7
Population density (person/km ²)	38.1
Workforce	35,851
Number of job seekers	3,081
Unemployment rate (%)	8.4

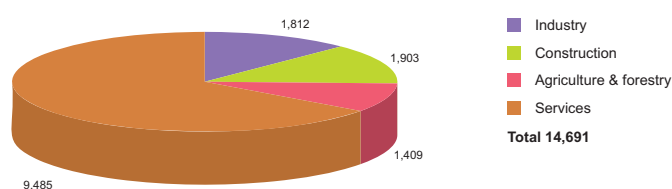
Source: Czech Statistical Office, Ministry of Labour and Social Affairs

NUMBER OF JOB SEEKERS ACCORDING TO EDUCATION



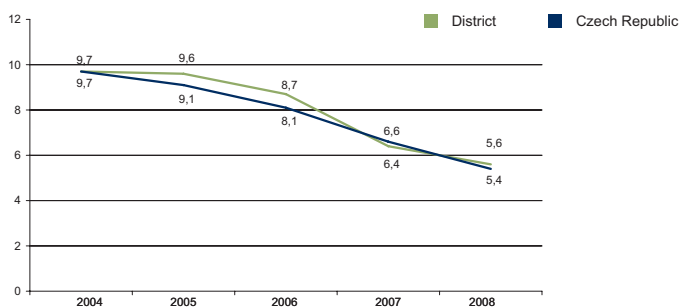
Source: Ministry of Labour and Social Affairs

NUMBER OF ECONOMIC UNITS ACCORDING TO PREVAILING ACTIVITY



Source: Czech Statistical Office

UNEMPLOYMENT - 5 YEAR TREND (%/YEAR)



Source: Czech Statistical Office

FOREIGN DIRECT INVESTMENT

	FDI (CZK)	FDI (EUR)
Český Krumlov	4 584 078	172 204
CR (total)	2 032 111 185	76 337 761
Prague	1 049 062 899	39 408 824
South Bohemia Average	10 156 063	381 520

Source: Czech National Bank

IMPORTANT COMPANIES IN THE DISTRICT ACCORDING TO TURNOVER

Name of company	Location	Employees	Activity (Sector)	Turnover	www
Linde Pohony, s.r.o.	Český Krumlov Domoradice	200 - 249	Manufacture of parts and accessories for motor vehicles and their engines	1500 mil. and more	
JIP - Papírny Větrní, a. s.	Větrní	250 - 499	Manufacture of paper and paperboard	1500 mil. and more	www.jip.cz
Engel strojírenská, s.r.o.	Kaplice	100 - 199	Manufacture of other general purpose machinery n.e.c.	1000 - 1499 mil.	www.engel.cz
Jednota družstvo spotřebitelů v Kaplici	Střítež - Kaplice-nádraží	250 - 499	Retail sale in non-specialized stores with food, beverages or tobacco predominating	931	www.jednotakaplice.cz
Schwan Cosmetics CR, s.r.o.	Český Krumlov - Domoradice	n/a	Manufacture of perfumes and toilet preparations	876	www.schwancosmetics.com
Jihostroj, a.s.	Velešín	500 - 999	Manufacture of pumps and compressors	859	www.jihostroj.cz
Zambelli - technik, s.r.o.	Český Krumlov - Domoradice	250 - 499	General mechanical engineering	816	www.zambelli.cz
Kopp Elektrotechnika, s.r.o.	Kaplice	100 - 199	Manufacture of electricity distribution and control apparatus	604	www.kopp-czech.cz
Actual, s.r.o.	Kaplice	50 - 99	Treatment and coating of metals	536	www.spg-int.com
Brawe, s.r.o.	Kaplice	250 - 499	General mechanical engineering	520	www.brandl-hb.com
Agrana Fruit Bohemia, s.r.o. v likvidaci	Kaplice	n/a	Processing and preserving of fruit and vegetables n.e.c.	516	
Carolyn Harris - u Vodníka Hostel	Český Krumlov - Horní Brána	n/a	Other provision of lodgings n.e.c.	500 - 999 mil.	
Bentex Automotive, a.s.	Benešov nad Černou - Klení	250 - 499	Manufacture of chairs and seats	500 - 999 mil.	www.bentex.cz
Kámen a písek, s.r.o.	Český Krumlov - Plešivec	100 - 199	Quarrying of stone, sands and gravel sand	390	www.kamen-ck.cz
Lesy Vyšší Brod, a.s.	Vyšší Brod	n/a	Forestry and logging	357	www.lesybas.vyssibrod.cz
Isotherm, s.r.o.	Kaplice	n/a	Basic manufacture of builders' carpentry and joinery (manufacture of windows, doors, etc.)	357	
Schwan - STABILO ČR, s.r.o.	Český Krumlov - Domoradice	250 - 499	Other manufacturing n.e.c.	300 - 499 mil.	www.schwan-stabilo.cz
Oknotherm, s.r.o.	Kaplice	100 - 199	Manufacture of builders' ware of plastic	343	www.oknotherm.cz
BENTEX - elektro, s.r.o.	Benešov nad Černou	100 - 199	Manufacture of electric motors, generators and transformers	300 - 499 mil.	www.bentex.cz

DISTRICT JINDŘICHŮV HRADEC



BASIC DATA	
Land Area	1,944 km ²

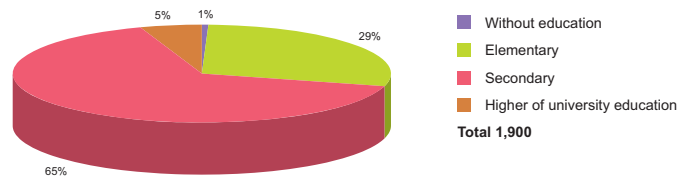
TOWNS WITH POPULATION OVER 5,000	
Jidřichův Hradec	22,300
Třeboň	8,840
Dačice	7,848

Source: Czech Statistical Office

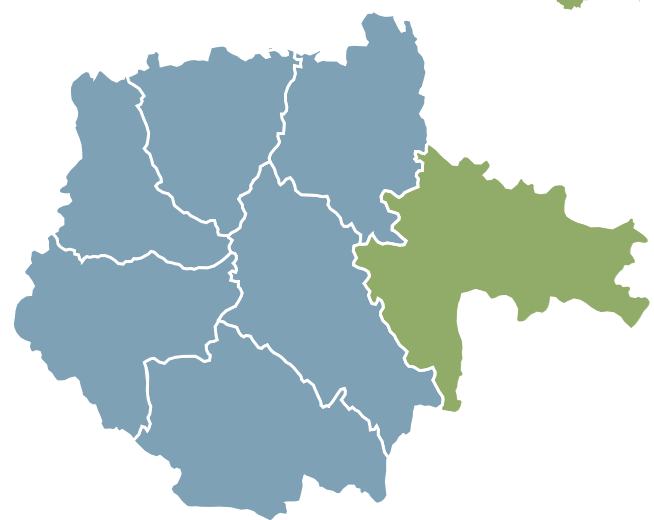
ACTUAL SITUATION ON LABOUR MARKET	
Population	93,180
Percentage in the total population of Czech Republic (%)	14.7
Population density (person/km ²)	47.9
Workforce	46,929
Number of job seekers	3,204
Unemployment rate (%)	6.6

Source: Czech Statistical Office, Ministry of Labour and Social Affairs

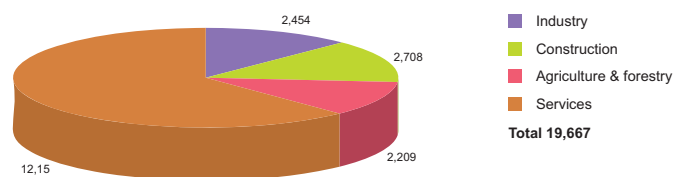
NUMBER OF JOB SEEKERS ACCORDING TO EDUCATION



Source: Ministry of Labour and Social Affairs

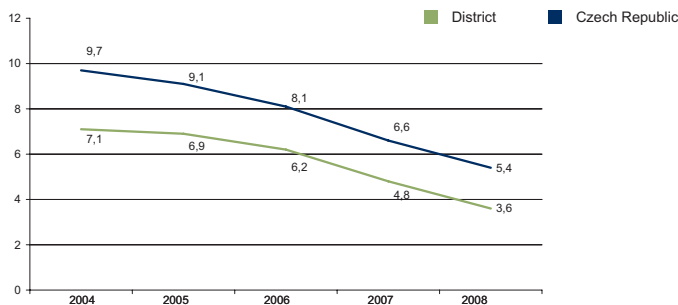


NUMBER OF ECONOMIC UNITS ACCORDING TO PREVAILING ACTIVITY



Source: Czech Statistical Office

UNEMPLOYMENT - 5 YEAR TREND (%/YEAR)



Source: Czech Statistical Office

FOREIGN DIRECT INVESTMENT

	FDI (CZK)	FDI (EUR)
Jidřichův Hradec	3 108 486	116 773
CR (total)	2 032 111 185	76 337 761
Prague	1 049 062 899	39 408 824
South Bohemia Average	10 156 063	381 520

Source: Czech National Bank

IMPORTANT COMPANIES IN THE DISTRICT ACCORDING TO TURNOVER

Name of company	Location	Employees	Activity (Sector)	Turnover	www
TRW - DAS, a.s.	Dačice III	500 - 999	Manufacture of parts and accessories for motor vehicles and their engines	3185	www.trwauto.cz
Magna Cartech, s.r.o.	České Velenice	250 - 499	Forging, pressing, stamping and roll forming of metal; powder metallurgy	1761	www.magnacartech.com
Waldviertler Sparkasse von 1842	Jindřichův Hradec II	100 - 199	Other monetary intermediation	1500 mil. and more	www.wspk.at, www.wspk.cz
Josef Princ VVP	Jindřichův Hradec II	n/a	Architectural and engineering services (incl. design)	1500 mil. and more	
Jednota, spotřební družstvo	Jindřichův Hradec IV	250 - 499	Retail sale in non-specialized stores with food, beverages or tobacco predominating	887	www.jednotajh.cz
Centropen, a.s.	Dačice V	250 - 499	Manufacture of stationery except paper articles	673	www.centropen.cz
Lesostavby Třeboň, a.s.	Jihlava	250 - 499	General construction of buildings and civil engineering works	534	www.lstb.cz
Some Jindřichův Hradec, s.r.o.	Jindřichův Hradec II	100 - 199	Other retail sale in specialized stores	500 - 999 mil.	www.somejh.cz
Lesy Český Rudolec, a.s.	Český Rudolec	250 - 499	Forestry and logging	458	www.lcr.cz
Kasalova pila, s.r.o.	Jindřichův Hradec II	n/a	Manufacture of builders' carpentry and joinery	431	www.kasalovapila.cz
Stavcent, a.s.	Jindřichův Hradec II	250 - 499	General construction of buildings and civil engineering works	409	www.stavcentjh.cz
ČSAD Jindřichův Hradec, a.s.	Jindřichův Hradec II	200 - 249	Freight transport by road	352	www.mujweb.cz /www.csadjhnd
Agrico, s.r.o.	Třeboň II	100 - 199	Manufacture of other agricultural and forestry machinery	342	www.agrico.cz
PKD, s.r.o.	Dačice V	n/a	Manufacture of locks and hinges	340	www.pkd.cz
Kinshofer CZ, s.r.o.	České Velenice	100 - 199	Other retail sale in specialized stores	309	www.kinshofer.com
Tecnocap, s.r.o.	Střížovice	250 - 499	Manufacture of light metal packaging	300 - 499 mil.	
Fish Market a. s.	Třeboň II	100 - 199	Processing and preserving of fish and fish products	300 - 499 mil.	
Ekopron - Metal, s.r.o.	Okrouhlá Radouň	n/a	Wholesale of waste and scrap	300 - 499 mil.	

DISTRICT PÍSEK



BASIC DATA

Land Area	1,138 km ²
-----------	-----------------------

TOWNS WITH POPULATION OVER 5,000

Písek	29,898
Milevsko	9,158
Protivín	5,065

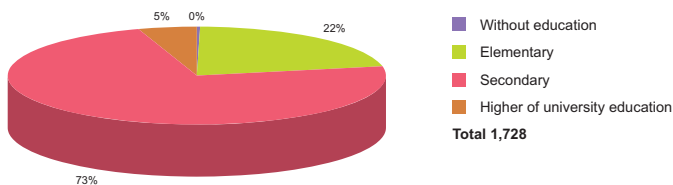
Source: Czech Statistical Office

ACTUAL SITUATION ON LABOUR MARKET

Population	70,544
Percentage in the total population of Czech Republic (%)	11.1
Population density (person/km ²)	62.0
Workforce	36,603
Number of job seekers	2,470
Unemployment rate (%)	6.6

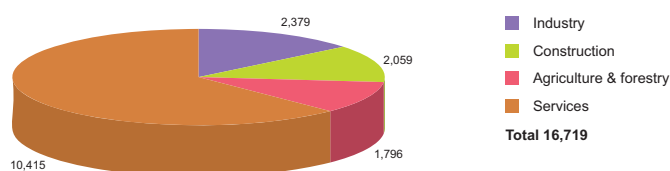
Source: Czech Statistical Office, Ministry of Labour and Social Affairs

NUMBER OF JOB SEEKERS ACCORDING TO EDUCATION



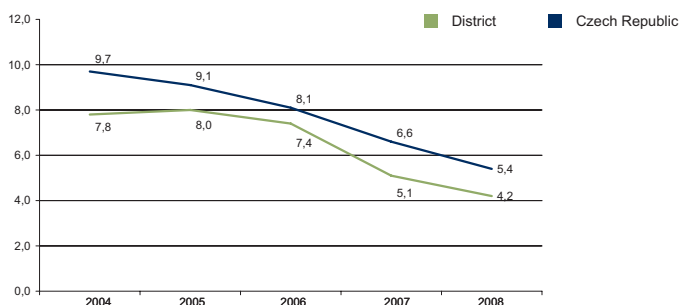
Source: Ministry of Labour and Social Affairs

NUMBER OF ECONOMIC UNITS ACCORDING TO PREVAILING ACTIVITY



Source: Czech Statistical Office

UNEMPLOYMENT - 5 YEAR TREND (%/YEAR)



Source: Czech Statistical Office

FOREIGN DIRECT INVESTMENT

	FDI (CZK)	FDI (EUR)
Písek	5 054 162	189 863
CR (total)	2 032 111 185	76 337 761
Prague	1 049 062 899	39 408 824
South Bohemia Average	10 156 063	381 520

Source: Czech National Bank

IMPORTANT COMPANIES IN THE DISTRICT ACCORDING TO TURNOVER

Name of company	Location	Employees	Activity (Sector)	Turnover	www
Schneider Electric, a.s.	Písek - Pražské Předměstí	500 - 999	Manufacture of electricity distribution and control apparatus	4151	www.schneider-electric.cz
Aisin Europe Manufacturing Czech, s.r.o.	Písek - Pražské Předměstí	250 - 499	Manufacture of machinery for the production and use of mechanical power, except aircraft, vehicle and cycle engines	1837	www.aisin.co.cz
ZVVZ, a. s.	Milevsko	1000 - 1499	Manufacture of non-domestic cooling and ventilation equipment	1719	www.zvvz.cz
Timotheus Svoboda	Písek - Budějovické Předměstí	n/a	Growing of crops combined with farming of animals (mixed farming)	1500 mil. and more	
s. n. o. p. cz, a.s.	Písek - Pražské Předměstí	500 - 999	General mechanical engineering	1500 mil. and more	www.snop.cz
Polari, s.r.o.	Písek - Budějovické Předměstí	25 - 49	Wholesale of solid, liquid and gaseous fuels and related products	1500 mil. and more	www.polari.cz
Casta, a.s.	Písek - Pražské Předměstí	50 - 99	Architectural and engineering services (incl. design)	945	www.castapisek.cz
Jihočeská drůbež Mirovice, a.s.	Mirovice	100 - 199	Production and preserving of poultrymeat	530	www.jd.cz
Agpi, a.s.	Písek 1	200 - 249	Growing of crops combined with farming of animals (mixed farming)	500 - 999 mil.	www.agpi.cz
Ekoklima, a.s.	Milevsko	n/a	Plumbing	432	www.ekoklima.cz
Otava, výrobní družstvo	Písek - Pražské Předměstí	250 - 499	Manufacture of electricity distribution and control apparatus	379	
OM Protivín, a.s.	Protivín	100 - 199	Manufacture of motorcycles	343	www.omprotivin.cz
Městský pivovar Platan, s.r.o.	Protivín	100 - 199	Manufacture of beer	330	www.pivo-platan.cz
KB Building CZ, s.r.o.	Písek - Pražské Předměstí	n/a	Building of complete constructions or parts thereof; civil engineering	307	
Logistic, s.r.o.	Písek - Budějovické Předměstí	n/a	Letting of own property	300 - 499 mil.	
Faurecia Automotive Czech Republic, s.r.	Písek - Pražské Předměstí	n/a	Business and management consultancy activities	300 - 499 mil.	



DISTRICT PRACHATICE

BASIC DATA

Land Area	1,375 km ²
-----------	-----------------------

TOWNS WITH POPULATION OVER 5,000

Prachatice	11,712
Vimperk	7,873

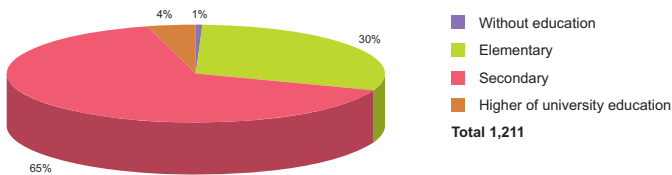
Source: Czech Statistical Office

ACTUAL SITUATION ON LABOUR MARKET

Population	51,532
Percentage in the total population of Czech Republic (%)	8.1
Population density (person/km ²)	37.5
Workforce	27,337
Number of job seekers	1,717
Unemployment rate (%)	6.0

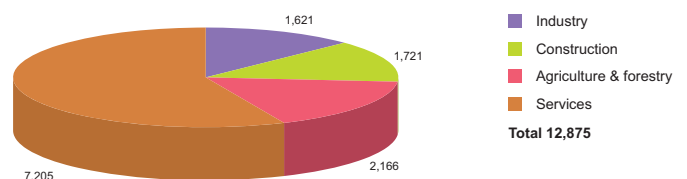
Source: Czech Statistical Office, Ministry of Labour and Social Affairs

NUMBER OF JOB SEEKERS ACCORDING TO EDUCATION



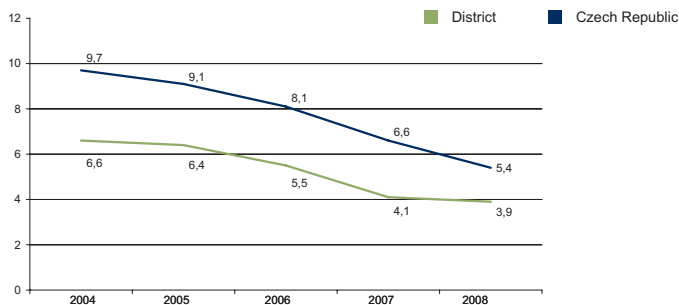
Source: Ministry of Labour and Social Affairs

NUMBER OF ECONOMIC UNITS ACCORDING TO PREVAILING ACTIVITY



Source: Czech Statistical Office

UNEMPLOYMENT - 5 YEAR TREND (%/YEAR)



Source: Czech Statistical Office

FOREIGN DIRECT INVESTMENT

	FDI (CZK)	FDI (EUR)
Prachatice	942 047	35 389
CR (total)	2 032 111 185	76 337 761
Prague	1 049 062 899	39 408 824
South Bohemia Average	10 156 063	381 520

Source: Czech National Bank

IMPORTANT COMPANIES IN THE DISTRICT ACCORDING TO TURNOVER

Name of company	Location	Employees	Activity (Sector)	Turnover	www
Otherm, a.s.	Husinec - Výrov	250 - 499	Manufacture of builders' ware of plastic	1067	www.otherm.cz
Seaquist - Löffler Kunststoffwerk, s.r.	Čkyně	250 - 499	Manufacture of plastic products for final consumption	500 - 999 mil.	www.seaquistclosures.com
Halz CZ, s.r.o.	Vlachovo Březí	25 - 49	Manufacture of parts and accessories for motor vehicles and their engines	500 - 999 mil.	
Českomoravská olejářská, k.s.	Lenora - Houžná	10 - 19	Other business activities n.e.c.	500 - 999 mil.	www.cmo.cz
Jednota, spotřební družstvo ve Vimperku	Vimperk II	200 - 249	Retail sale in non-specialized stores with food, beverages or tobacco predominating	445	www.jednota.vimperk.virt.cz
Vimperská masna, a.s.	Vimperk - Pravětín	100 - 199	Production and preserving of meat	441	www.vimperskamasna.cz
Vykov, a.s.	Prachatice II	10 - 19	Manufacture of other fabricated metal products	350	www.vykov.cz
Agromont Vimperk, s.r.o.	Bohumilice	n/a	General construction of buildings and civil engineering works	343	www.agromont.cz
Dřevostroj Čkyně, a.s.	Čkyně	100 - 199	Manufacture of other machine tools n.e.c.	301	www.drevostroj.cz
Rohde & Schwarz závod Vimperk, s.r.o.	Vimperk - Pravětín	250 - 499	Manufacture of television and radio transmitters and apparatus for line telephony and line telegraphy	300 - 499 mil.	
Benx, s.r.o.	Vlachovo Březí	6 - 9	Advertising	300 - 499 mil.	
Zdeněk Vymětal - Vykov	Prachatice II	20 - 24	Wholesale on a fee or contract basis	286	www.vykov.cz
Stavoplast KL, s.r.o.	Stachy	100 - 199	General construction of buildings and civil engineering works	200 - 299 mil.	www.stavoplastkl.cz
STS Prachatice, a.s.	Těšovice, Husinec	50 - 99	Manufacture of other fabricated metal products n.e.c.	188	www.stsprachatice.cz
Agropodnik, a.s. Strunkovice nad Blanicí	Strunkovice nad Blanicí	10 - 19	Maintenance and repair of motor vehicles	163	
CN Cargo, s.r.o.	Netolice	25 - 49	Courier activities other than national post activities	161	www.cncargo.cz
Zemědělské zásobování a výkup	Prachatice II	25 - 49	Wholesale of agricultural raw materials and live animals	149	
Reno Šumava, a.s.	Prachatice II	n/a	Painting and glazing	143	www.sweb.cz/renosumava
InTiCa Systems, s.r.o.	Prachatice II	100 - 199	Manufacture of electricity distribution and control apparatus	131	

DISTRICT STRAKONICE



BASIC DATA

Land Area	1,032 km ²
-----------	-----------------------

TOWNS WITH POPULATION OVER 5,000

Strakonice	23,280
Vodňany	7,028
Blatná	6,693

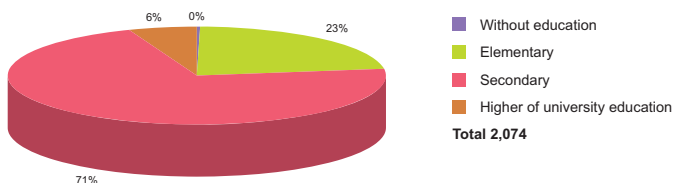
Source: Czech Statistical Office

ACTUAL SITUATION ON LABOUR MARKET

Population	70,988
Percentage in the total population of Czech Republic (%)	11.2
Population density (person/km ²)	68.8
Workforce	39,817
Number of job seekers	2,890
Unemployment rate (%)	7.1

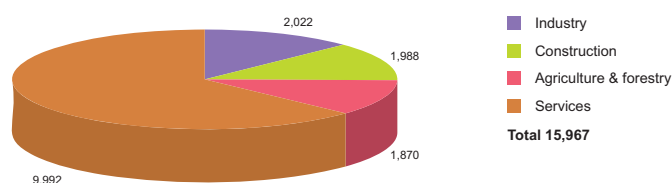
Source: Czech Statistical Office, Ministry of Labour and Social Affairs

NUMBER OF JOB SEEKERS ACCORDING TO EDUCATION



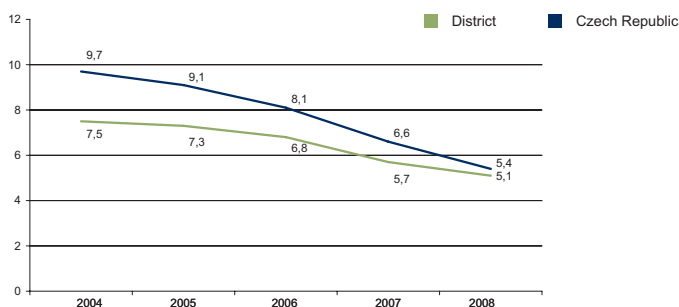
Source: Ministry of Labour and Social Affairs

NUMBER OF ECONOMIC UNITS ACCORDING TO PREVAILING ACTIVITY



Source: Czech Statistical Office

UNEMPLOYMENT - 5 YEAR TREND (%/YEAR)



Source: Czech Statistical Office

FOREIGN DIRECT INVESTMENT

	FDI (CZK)	FDI (EUR)
Strakonice	1 504 669	56 524
CR (total)	2 032 111 185	76 337 761
Prague	1 049 062 899	39 408 824
South Bohemia Average	10 156 063	381 520

Source: Czech National Bank

IMPORTANT COMPANIES IN THE DISTRICT ACCORDING TO TURNOVER

Name of company	Location	Employees	Activity (Sector)	Turnover	www
Jihočeská drůbež, a.s.	Vodňany II	500 - 999	Production and preserving of poultrymeat	1500 mil. and more	www.jd.cz
Dura Automotive CZ, k.s.	Blatná	1000 - 1499	Manufacture of parts and accessories for motor vehicles and their engines	1500 mil. and more	www.duraauto.com
PechaSan, s.r.o.	Strakonice I	25 - 49	Wholesale of hardware, plumbing and heating equipment and supplies	848	www.pechasan.cz
Zemědělské zásobování a nákup	Radošovice	100 - 199	Manufacture of prepared feeds for farm animals	777	www.zznstrakonice.cz
Knürr, s.r.o.	Nišovice	200 - 249	Manufacture of metal structures and parts of structures	620	www.knuerr.cz
Jednota, spotřební družstvo ve Volyni	Volyně	250 - 499	Retail sale in non-specialized stores with food, beverages or tobacco predominating	541	www.jednota.volyn.cz
Metal Progres Strakonice, s.r.o.	Strakonice I	250 - 499	Treatment and coating of metals	503	www.metal-progres.cz
Penta CZ, s.r.o.	Strakonice - Přední Ptákovice	50 - 99	Wholesale of computers, computer peripheral equipment and software	500 - 999 mil.	www.penta.cz
LEIFHEIT s.r.o.	Blatná	250 - 499	Manufacture of other fabricated metal products n.e.c.	500 - 999 mil.	www.trade.cz/btf-blтна
Teplárna Strakonice, a.s.	Strakonice II	200 - 249	Steam and hot water supply	435	www.tst.cz
Agro Blatná, a.s.	Lnáře	25 - 49	Wholesale of chemical products	426	
Doprava Záruba M & k, s.r.o.	Vodňany II	100 - 199	Maintenance and repair of motor vehicles	408	www.zaruba.cz
Agra Group, a.s.	Střelské Hoštice	25 - 49	Manufacture of fertilizers and nitrogen compounds	406	www.agra.cz
Jihospol, Jihočeská obchodní a stavební	Strakonice I	100 - 199	General construction of buildings and civil engineering works	386	www.jihospol.cz
Reta com, s.r.o.	Strakonice II	50 - 99	Other business activities n.e.c.	355	www.retacomputer.cz
Prima, a.s.	Strakonice I	100 - 199	General construction of buildings and civil engineering works	310	www.prima-strakonice.cz
ČSAD Sitrans, a.s.	Strakonice I	100 - 199	Freight transport by road	308	www.sitrans.cz
Václav Cimburek - Civa Trans	Rovná	100 - 199	Freight transport by road	300 - 499 mil.	www.civatrans.cz
Siko CB, a.s.	Vodňany	50 - 99	Architectural and engineering services (incl. design)	300 - 499 mil.	www.sikocb.cz

DISTRICT TÁBOR



BASIC DATA

Land Area	1,327 km ²
-----------	-----------------------

TOWNS WITH POPULATION OVER 5,000

Tábor	35,769		
Soběslav	7,304	Veselí nad Lužnicí	6,598
Sezimovo Ústí	7,302	Bechyně	5,557

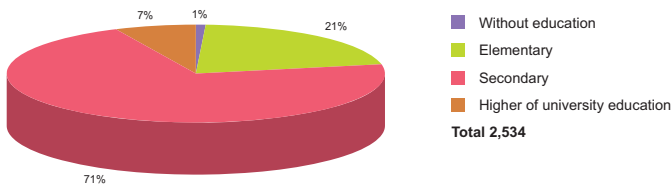
Source: Czech Statistical Office

ACTUAL SITUATION ON LABOUR MARKET

Population	102,764
Percentage in the total population of Czech Republic (%)	16.2
Population density (person/km ²)	77.4
Workforce	55,644
Number of job seekers	3,887
Unemployment rate (%)	6.7

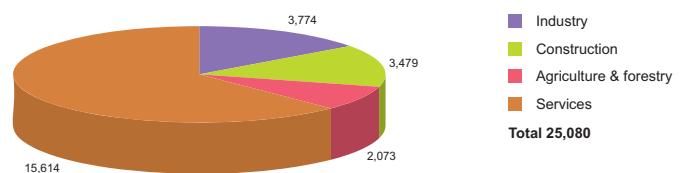
Source: Czech Statistical Office, Ministry of Labour and Social Affairs

NUMBER OF JOB SEEKERS ACCORDING TO EDUCATION



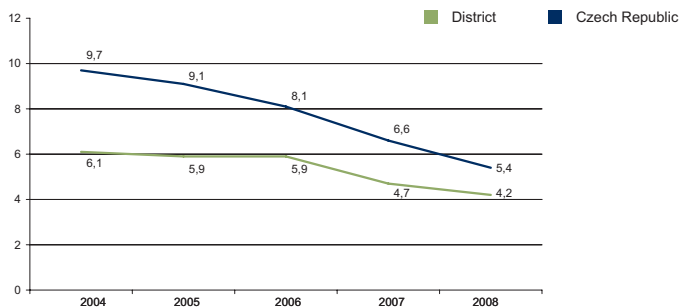
Source: Ministry of Labour and Social Affairs

NUMBER OF ECONOMIC UNITS ACCORDING TO PREVAILING ACTIVITY



Source: Czech Statistical Office

UNEMPLOYMENT - 5 YEAR TREND (%/YEAR)



Source: Czech Statistical Office

FOREIGN DIRECT INVESTMENT

	FDI (CZK)	FDI (EUR)
Tábor	4 883 488	183 452
CR (total)	2 032 111 185	76 337 761
Prague	1 049 062 899	39 408 824
South Bohemia Average	10 156 063	381 520

Source: Czech National Bank

IMPORTANT COMPANIES IN THE DISTRICT ACCORDING TO TURNOVER

Name of company	Location	Employees	Activity (Sector)	Turnover	www
Silon, s.r.o.	Planá nad Lužnicí	n/a	Real estate agencies	3 667	www.silon.eu
Maso Planá, a.s.	Planá nad Lužnicí	250 - 499	Production and preserving of meat	2 362	www.masoplana.cz
Kovosvit MAS, a.s.	Sezimovo Ústí	1000 - 1499	Manufacture of machine tools	1 721	www.kovosvit.cz
BOHEMIA ASFALT, s.r.o.	Soběslav II	100 - 199	Manufacture of other non-metallic mineral products n.e.c.	1 608	
Mlékařské a hospodářské družstvo JIH	Tábor	1 - 5	Wholesale of dairy produce, eggs and edible oils and fats	1500 mil. and more	
JITONA a.s.	Soběslav	1000 - 1499	Manufacture of other furniture	1500 mil. and more	www.jitona.cz
Flosman, a.s.	Tábor - Měšice	250 - 499	Non-specialized wholesale of food, beverages and tobacco	1 491	www.flosman.cz
Flop JIH, s.r.o.	Tábor	10 - 19	Non-specialized wholesale of food, beverages and tobacco	1 405	www.flopjih.cz
Tagrea, a. s.	Tábor - Čekanice	100 - 199	Manufacture of prepared feeds for farm animals	1 044	www.tagrea.cz
Intersnack, a.s.	Choustník	n/a	Processing and preserving of potatoes	1000 - 1499 mil.	intersnack.devel.sic.cz
Zeelandia, s.r.o.	Malšice	100 - 199	Wholesale of dairy produce, eggs and edible oils and fats	978	www.zeelandia.cz
BRISK Tábor, a.s.	Tábor	500 - 999	Manufacture of electrical equipment for engines and vehicles n.e.c.	800	www.brisk.cz
Acco Deutschland GmbH & Co.KG, org.	Tábor	250 - 499	Manufacture of other plastic products	735	www.hetzel.cz
Jednota, obchodní družstvo Tábor	Tábor	n/a	Retail sale in non-specialized stores with food, beverages or tobacco predominating	685	www.jednota-tabor.cz
Motor Jikov Strojírenská, a.s.	Soběslav II	250 - 499	Manufacture of parts and accessories for motor vehicles and their engines	660	www.mjs.cz
Outokumpu, s.r.o.	Chýnov - Záhostice	25 - 49	Wholesale of metals and metal ores	637	www.outokumpu.com
Comett Plus, s.r.o.	Tábor	250 - 499	Freight transport by road	603	www.comettplus.cz
AES Bohemia, s.r.o.	Planá nad Lužnicí	50 - 99	Steam and hot water supply	577	www.aes.com
Fontea, a.s.	Veselí nad Lužnicí	n/a	Production of mineral waters and soft drinks	576	www.fontea.cz
Hanson CR, a.s.	Veselí nad Lužnicí II	100 - 199	Quarrying of stone, sands and gravel sand	564	www.hansonplc.com