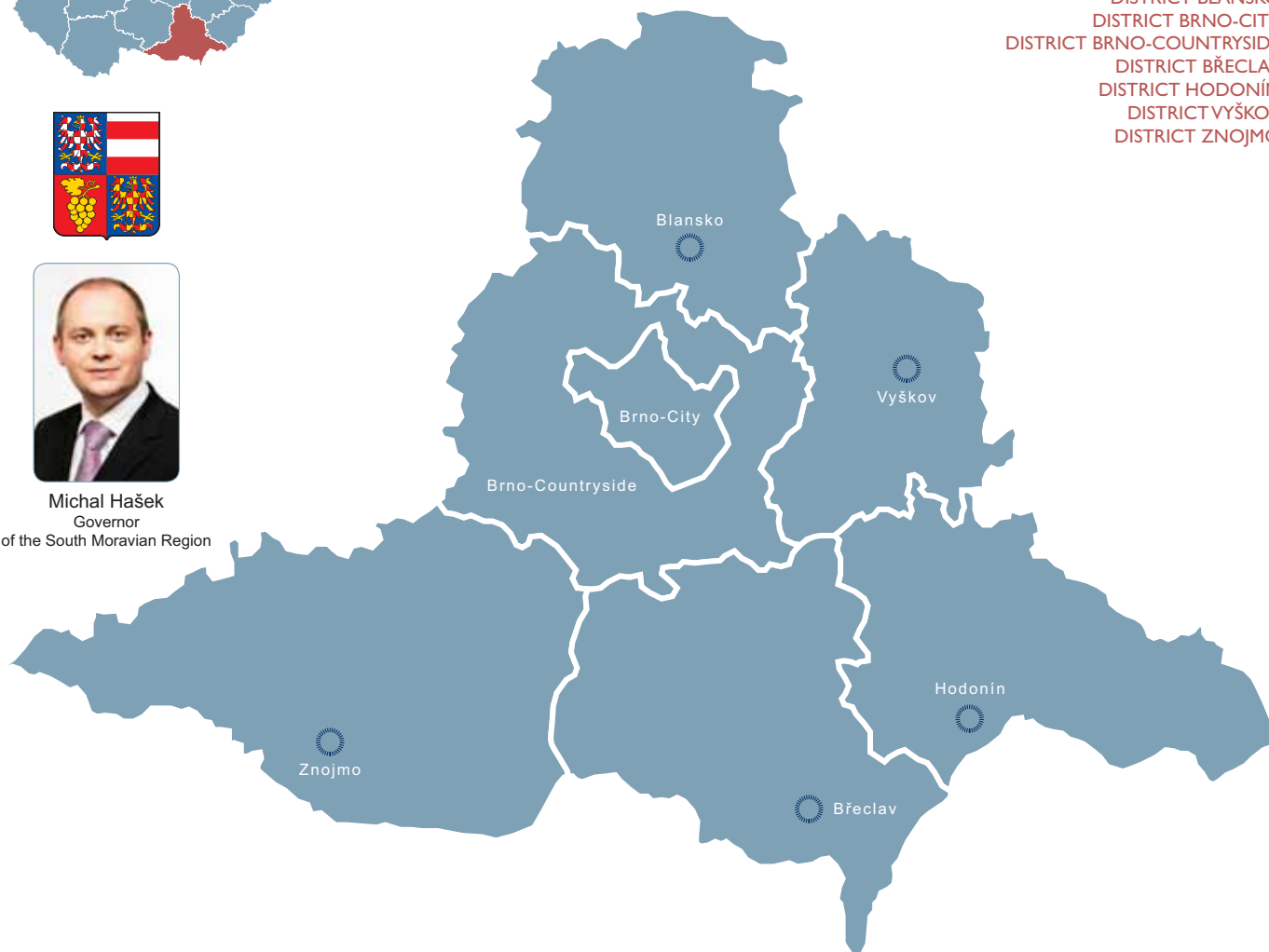


Michal Hašek
Governor
of the South Moravian Region

SOUTH MORAVIA REGION

DISTRICT BLANSKO
DISTRICT BRNO-CITY
DISTRICT BRNO-COUNTRYSIDE
DISTRICT BŘECLAV
DISTRICT HODONÍN
DISTRICT VYŠKOV
DISTRICT ZNOJMO



ABOUT REGION

The South Moravia region occupies a strategic position in Central Europe and features good connections to the main European transport network. The region covers an area of 719,555 hectares and has a population of more than 1.14 million people, ranking it fourth in the Czech Republic. Located in the middle of South Moravia, the nation's second-largest city and the regional capital, Brno, is an important centre of education and seat of several universities, significant research institutes and judicial bodies, and also regularly hosts international trade fairs and exhibitions.

The region's advantage lies in its outstanding transport accessibility and strategic location at the intersection of trans-European highways and railroads, which are important arteries linking Western Europe to the continent's eastern, northern and southern regions. The Category I Brno-Tuřany international airport plays an important role in the region.

The region's high-quality university system greatly contributes to the population's high level of education. Fourteen universities operate in the region with a combined student body of 80,000 representing strong potential for the development of a highly skilled workforce focused on research and development.

South Moravia has one of the highest rates of per-capita GDP in the Czech Republic. The predominant economic activities are targeted at supporting innovative investment opportunities. The main industrial sectors are mechanical engineering, electrical engineering, information technology and life sciences. The region is the second most important centre of information technologies in the Czech Republic. South Moravia also plays a leading role in the Czech Republic in the areas of medicine, research and biotechnology, making it a very attractive destination for foreign investors (in 2008

South Moravia was the region with the greatest number of investments for the second time).

South Moravia was the first region in the Czech Republic to start systematically focusing support on innovation (since 2001). It was also the first region to formulate a regional innovation strategy (RIS), leading to the development of infrastructure needed for innovation. The third version of the strategy, RIS3, was elaborated in 2009. The aim of RIS3 is to enhance competitiveness through cooperation between the science-research sphere and companies, and to maximise the introduction of the results of science and research projects into practice.

The region offers favourable conditions for the development of science and research, supports the creation of sophisticated infrastructure for innovative business and distinctly promotes the development of technology-oriented firms through, among other things, technology and biotechnology incubators and other specific tools for start-up and innovative firms. There are currently three incubators operating in South Moravia: VUT Technology Incubator, Technology Incubator II and INBIT Biotechnology Incubator.

With numerous historical sites and great wine, South Moravia is a popular tourist destination. The region has four sites registered on the UNESCO World Heritage List: Lednice-Valtice Cultural Landscape, Tugendhat Villa, and the Pálava and White Carpathians Biosphere Reservation. The Moravian Karst protected landscape area is another world-famous site. Fans of motor sports are drawn to the car and motorcycle races held at the Masaryk Circuit. A dense network of hiking and bike trails, among the best in the Czech Republic, offers a unique way to get to know the region.

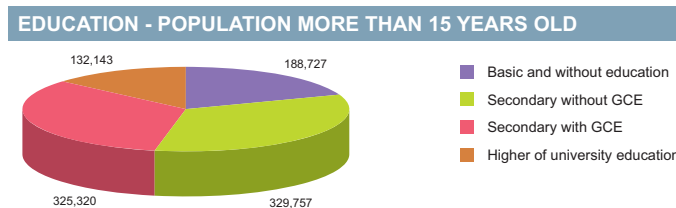
BASIC DATA	
Land Area	7,196 km ²

ACTUAL SITUATION ON LABOUR MARKET	
Population	1,146,803
Percentage in the total population of Czech Republic (%)	11.0
Population density (person/km ²)	159.4
Workforce	607,170
Number of job seekers	52,421
Unemployment rate (%)	8.4

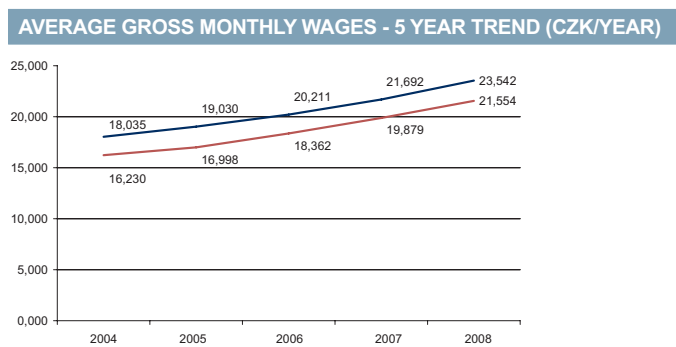
Source: Czech Statistical Office, Ministry of Labour and Social Affairs

NUMBER OF ECONOMIC UNITS ACCORDING TO PREVAILING ACTIVITY	
Total	276,873
Industry	37,833
Construction	32,495
Agriculture & forestry	17,494
Services	187,378

Source: Czech Statistical Office



Source: Czech Statistical Office



Source: Czech Statistical Office

GDP BY REGIONS				
Region	TOTAL		Per capita	
	mln. CZK	mln. EUR	Total CZK	Total EUR
South Moravia	362 044	14 515	318 863	11 484
Average GDP for Czech regions	252 161	10 110	341 989	13 711
Share in GDP of the Czech Republic	10%			

Source: Czech Statistical Office

AVERAGE GROSS MONTHLY WAGES - 5 YEAR TREND										
Year	2004		2005		2006		2007		2008	
	CZK	EUR	CZK	EUR	CZK	EUR	CZK	EUR	CZK	EUR
South Moravia	16,230	509	16,998	571	18,362	648	19,879	716	21,554	864
Average for Czech Republic	18,035	565	19,030	639	20,211	713	21,692	781	23,542	944

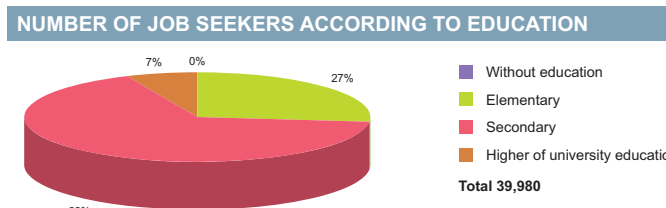
Source: Czech Statistical Office

ADMINISTRATIVE BREAKDOWN	
Number of districts	7
Number of municipalities	673
of that, number of towns	49

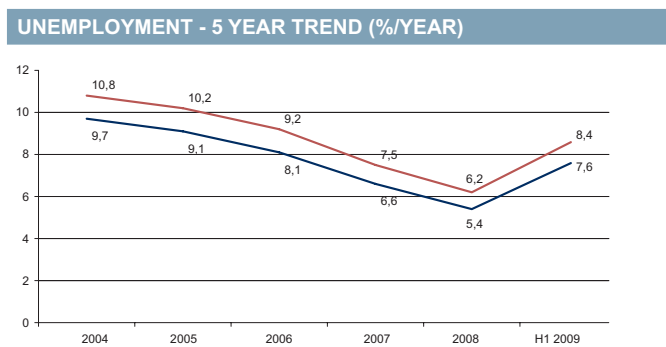
Source: Czech Statistical Office

NUMBER OF EMPLOYEES AND GROSS MONTHLY WAGES IN MANUFACTURING ACCORDING TO NACE CLASSIFICATION		
	Number of employees	Wages (EUR)
Manufacturing	76,043	868
Man. of food products, beverages and tobacco products	9,612	780
Man. of chemical, chemical products, pharmaceuticals, and chemical fibres	3,887	917
Man. of rubber and plastic products	5,547	778
Man. of basic metals and fabricated metal products	9,965	873
Man. and repairs of machinery and equipment	15,469	953
Man. of electrical and optical equipment	14,712	885
Man. of transport equipment	2,367	859

Source: Czech Statistical Office



Source: Ministry of Labour and Social Affairs



Source: Czech Statistical Office

FOREIGN DIRECT INVESTMENT		
Region	FDI (CZK)	FDI (EUR)
min.	17 940 192	673 937
South Moravia	83 395 704	3 132 821
max.	1 049 062 899	39 408 824
Average	145 150 799	5 452 697

Source: Czech National Bank

LIST OF AIRPORTS

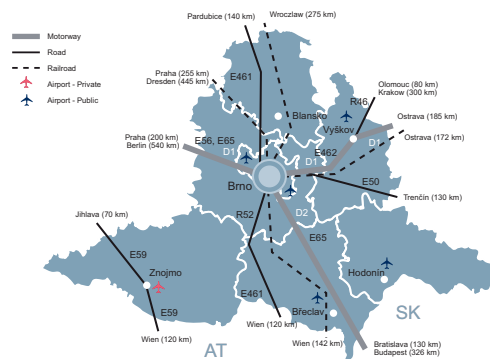
	Specification		
	Public/Private	Civil/Military/Varied	International/Intrnational
Brno / Tuřany	Public	Civil	International
Břeclav	Public	Civil	Intrnational
Kyjov	Public	Civil	Intrnational
Medlánky	Public	Civil	Intrnational
Vyškov	Public	Civil	Intrnational
Znojmo	Private	Civil	Intrnational

Source: Ministry of Transport, Aerobaze.cz

LABOUR OFFICE

City	Address	Phone	Fax	E-mail
Blansko	Vodní 1992/9, 678 01 Blansko 1	950 103 111	950 103 302	blansko@bk.mpsv.cz
Brno-city	Křenová 111/25, 602 00 Brno 2	543 517 111	543 211 349	brnomesto.up@bm.mpsv.cz
Brno-countryside	Šujanovo náměstí 302/3, 602 00 Brno 2	543 160 332	543 211 093	brnovenkov@bo.mpsv.cz
Břeclav	Fintajsova 1976/7, 690 02 Břeclav 2	950 107 111	950 107 302	uradprace@bv.mpsv.cz
Hodonin	Lipová alej 3846/8, 695 01 Hodonin 1	518 301 111	518 321 319	posta@ho.mpsv.cz
Vyškov	Palánek 375/3a, 682 01 Vyškov	517 304 111	517 304 666	posta@vy.mpsv.cz
Znojmo	náměstí Svobody 2889/8, 669 02 Znojmo 2	515 203 111	515 203 130	posta@zn.mpsv.cz

Source: Ministry of Labour and Social Affairs



SCHOOL SYSTEM

	Number of schools	Number of students	Number of graduates
Secondary schools			
Technical fields	n/a	18 672	5 153
Economic fields	n/a	14 269	3 900
ICT fields	n/a	5 494	1 605
Higher schools			
Technical fields	n/a	180	62
Economic fields	n/a	458	98
ICT fields	n/a	126	32
Universities			
Technical fields	3	16 356	3 954
Economic fields	8	11 003	2 074
ICT fields	3	9 909	2 071

Source: Institute for Information on Education

KNOWLEDGE OF FOREIGN LANGUAGES

Source: Augur Consulting

LANGUAGE	ALL SKILLS LEVEL (%)	LANGUAGE	ALL SKILLS LEVEL (%)	LANGUAGE	ALL SKILLS LEVEL (%)	LANGUAGE	ALL SKILLS LEVEL (%)
English	70.5	French	8.5	Spanish	3.4	Russian	47.9
German	57.3	Italian	5.6	Polish	7.3	Nordic languages	1.7

LIST OF UNIVERSITIES 2009

Name of school	WWW	Orientation	Titles awarded	Students
Akademie STING	www.sting.cz	Economics, management, economic policy	Bc., Ing.	835
Brno International Business School	www.bibs.cz	Economics, management, law	BA, MSc., MBA, DBA, LL.M., Bc., Ph.D.	523
Janáčkova akademie múzických umění v Brně (JAMU)	www.jamu.cz	Music, theatre	BcA, MgA, Ph.D.	652
Masarykova univerzita v Brně	www.muni.cz	Variety of programmes	Bc., Mgr., Ph.D.	36 252
Mendelova zemědělská a lesnická univerzita v Brně	www.mendelu.cz	Economics, agriculture, forestry, gardening	Bc., Mgr., Ing.	10 352
Rašínova vysoká škola	www.ravys.cz	Law, economics	Bc.	330
Soukromá vysoká škola ekonomická Znojmo	www.vsve.cz	Economics, marketing, management, accounting	Bc.	686
Univerzita obrany	www.unob.cz	Military, strategic, medical, economics	Bc., Mgr., MUDr., Ph.D., Ing.	n/a
Veterinární a farmaceutická univerzita Brno	www.vfu.cz	Veterinary medicine, hygiene, pharmacy	Bc., Mgr., MVDr., Ph.D., PharmDr.	2 816
Vysoká škola aplikovaného práva	www.vsap.cz	Law	Bc.	n/a
Vysoká škola Karla Engliš v Brně	www.vske.cz	Economics, management	Bc.	499
Vysoká škola NEWTON College	www.newtoncollege.cz	Economics, management	Bc.	230
Vysoká škola obchodní a hotelová	www.hotkolabno.cz	Management	Bc.	209
Vysoké učení technické v Brně	www.vutbr.cz	Technical, chemistry, art, business	Bc., Ing., Ing. Arch, MgA, Ph.D., MBA	21 176

Source: Institute for Information on Education

INDUSTRIAL PARKS IN THE CZECH REPUBLIC



Project	Region	City/ Town	Total Area (warehouse + office)	Year of Completion	Project	Region	City/ Town	Total Area (warehouse + office)	Year of Completion
CTPark Brno	South Moravia	Brno	151 627	2007	CTZone Brno Skrobarna	South Moravia	Brno	20 622	2007-2008
CTPark Brno South	South Moravia	Brno	41 722	2008-2009	CTPark Pohořelice	South Moravia	Pohořelice	91 491	2007-2009
CTPark Modřice	South Moravia	Brno	145 055	n/a	Logistický park Pohořelice	South Moravia	Pohořelice	27 000	2008

Note: Date of completions highlighted in red - we don't know the beginning of completion

Source: CB Richard Ellis

RENTS IN INDUSTRIAL PREMISES IN CR REGIONS (EUR/sqm/month)	
South Moravia Region	3,75-4,75
Note 1: Net effective rents for units ca 4,000 sq m which is average deal size in the market	
Note 2: Premises are immediately available only some regions.	

Source: CB Richard Ellis

PRIME RENTS IN OFFICE PREMISES IN BRNO (EUR/sqm/month)	
Brno	10.50-12.50
„Prime rent definition: Prime Rent – typical 'achievable' open market headline rent (can be hypothetical) for a unit of standard size commensurate with demand in each location, of highest quality and specification and in the best location in a market at the survey date. It does not need to be identical to any of the transactions, particularly if the deal flow is very limited or made up of unusual one-off deals“	

Source: CB Richard Ellis

PRIME RENTS IN SHOPPING CENTRES (EUR/sqm/month)	
South Moravia Region	25-45
Note: for units ca 100 sqm.	

Source: CB Richard Ellis

LIST OF THE BEST BRNO A-CLASS OFFICE PROJECTS					
Project name	Type	EXISTING/ PLANNED/UC	Total Office Area (sqm)	Date of completion	Year of Completion
Avriopoint	New Build	Existing	4 096	2008 Q4	2008
Axis Office Park	New Build	Existing	10 000	phase development 2005-2006	2005-2006
Brno Business Park	New Build	Existing	32 316	phase development 2005-2007	2005-2007
Campus Park Building A	New Build	Existing	12 000	2009 Q2	2009
Platinum	New Build	Existing	7 312	2005 Q3	2005
Spielberk	New Build	Existing	54 541	phase development 2005-2007	2005-2007
Technology Park	New Build	Existing	19 472	phase development 2006-2008	2006-2008
Trinitii Office Centre	New Build	Existing	5 470	2009 Q2	2009
Vienna Point 1	New Build	Existing	5 050	2005 Q4	2005
CTPark Brno Honeywell Office Campus	New Build	Under Construction	8 000	2009 Q3	2009
Magnum Administrativní centrum	New Build	Under Construction	5 650		2009
Spielberk Tower	New Build	Under Construction	15 000		2011
Titanium Phase 1	New Build	Under Construction	24 335		2011
Trinitii Office Centre	New Build	Under Construction	4 260		2011
Vienna Point 2	New Build	Under Construction	8 000		n/a
Campus Park Building B	New Build	Planned	8 000		n/a

Source: CB Richard Ellis

SELECTED INDUSTRIAL ZONES IN THE SOUTH MORAVIA REGION	
Industrial zone	Area (ha)
Blansko - Vojánky	13,60
Blučina	55,00
Brankovice	10,10
Černovická terasa	195,00
Hodonín - Kapříška	19,60
Hodonín - Pánov	10,00
Hodonín - Zadní díly	10,17
Krystal park - Znojmo - Přímětice	15,00
Kuřim - Blanenská	30,00
Letovice - Roviny	14,00
Mikulov - průmyslová zóna Západ	14,85
Miroslav - Pozemek pro podnikání	12,49
Průmyslová zóna dolní Štngary	43,88
Průmyslová zóna Vyškov - Nouzka II	14,10
Technologický park Brno	15,00
Vyškov - Sochorova II	17,00
Znojmo - Přímětice	10,50

Source: CzechInvest

IMPORTANT CONTACTS IN THE REGION	
<p>Regional Council Žerotínovo náměstí 3/5, 601 82 Brno tel.: 541 651 111 fax: 541 651 209 Email: posta@kr-jihomoravsky.cz URL: www.kr-jihomoravsky.cz</p>	<p>Podnikatelské a inovační centrum/ Business and Innovation Center - BIC Brno, spol. s r.o. Příkop 4, 602 00 Brno tel.: 545 176 130 fax: 545 176 120 Email: bicbrno@bicbrno.cz URL: www.bicbrno.cz</p>
<p>City Hall – Brno Dominikánské nám. 196/1, 601 67 Brno tel.: 542 173 590 Email: informace@brno.cz URL: www.brno.cz Contact person: Mgr. Tereza Chrástová (tel.: 542 172 309, email: chrastova.tereza@brno.cz)</p>	<p>CzechTrade - Regional Information Place – Brno Výstaviště 1, 648 04 Brno tel.: 541 159 544, 724 613 027 fax: 541 153 055 Email: brno-czechtrade@komora.cz URL: www.ohkbrno.cz</p>
<p>CzechInvest - Regional Office Spielberk Office Centre, Holandská 3 (Vila K - 4. patro), 639 00 Brno tel.: 543 422 780 - 785 fax: 543 422 795 Email: brno@czechinvest.org Contact persons: Mgr. Martin Potůček, Mgr. Lucie Kuljovská</p>	<p>Euro Info Center – Brno Výstaviště 1, areál BVV 648 04 Brno tel.: 532 194 918 fax: 532 194 938 Email: eicbrno@ohkbrno.cz URL: www.rhkbrno.cz/eic Contact persons: Jana Koudelková, Ing. Libor Kejda</p>
<p>Regional Development Agency of the South Moravia Královopolská 139, 612 00 Brno tel.: 541 211 635, 541 219 282, 541 212 125 fax: 541 211 635 Email: rrajm@rrajm.cz, jana.svestkova@rrajm.cz URL: www.rrajm.cz</p>	<p>Jihomoravské inovační centrum JIC, zájmové sdružení právnických osob U Vodárny 2, 616 00 Brno tel.: 541 143 000 fax: 541 143 011 E-mail: jic@jic.cz</p>
<p>Regional Consulting & Information Center - Trade & Economic Chamber Výstaviště 1, 648 04 Brno tel.: 532 194 911 fax: 532 194 938 Email: rhkbrno@rhkbrno.cz URL: www.rhkbrno.cz Contact person: Petr Bajar</p>	<p>Austrian Trade - Marketing Office Brno Hybešova 42, 602 00 Brno tel: 543 128 274 fax: 543 128 275 Email: brno@austriantrade.org Contact person: Martin Žák</p>
	<p>UTILITIES</p> <p>GAS Jihomoravská plynárenská a.s. Plynárenská 499/1, 657 02 Brno tel.: 545 579 566 fax: 545 243 722 Email: info@rwe-jmpnet.cz URL: www.rwe-jmpnet.cz</p> <p>ELECTRICITY E.ON Česká republika, a.s. Lidická 36, 659 44 Brno tel.: 840 111 333 Email: info@eon.cz URL: www.eon.cz</p> <p>WATER AND SEWER SYSTEM Brněnské vodárny a kanalizace, a.s. Hybešova 254/16, 657 33 Brno tel.: 543 433 111 fax: 543 433 000 Email: bvkc@bvkc.cz URL: www.bvkc.cz</p> <p>Vodovody a kanalizace Vyškov, a.s. Brněnská 13/410, 682 01 Vyškov tel.: 517 324 930 fax: 517 348 066 Email: info@vakvyskov.cz URL: www.vakvyskov.cz</p> <p>Vodovody a kanalizace Hodonín, a.s. Purkyňova 2/2933, 695 11 Hodonín tel.: 518 305 911, 800 800 825 fax: 518 351 221 Email: vak@vak-hod.cz URL: www.vak-hod.cz</p>
	<p>HEAT STOS - TZ Brno v.o.s Korejská 3082/4, 616 00 Brno tel.: 541 217 324 Email: stos-tz.jochmymbox.cz</p> <p>TEPLO Kyjov spol. s r.o. Svatoborská 27, 697 01 Kyjov 1 tel.: 518 612 467 Email: teplokyjov@seznam.cz</p> <p>Tepelné zásobování Brno a.s. Hlinky 135/68, 603 00 Brno tel.: 543 424 311, fax: 543 211 924 Email: info@tezabrn.cz URL: www.tezabrn.cz</p> <p>Teplárna Kyjov a.s. Havlíčková 180/18, 697 01 Kyjov tel.: 518 698 712 fax: 518 698 713 Email: tky@tky.cz</p> <p>Teplárny Brno a.s. Okružní 25, 638 00 Brno – Lesná tel.: 545 161 111 fax: 545 169 999 Email: mail@teplarny.cz URL: www.teplarny.cz</p> <p>Vustern a.s. Hudcova 78, 612 00 Brno tel.: 541 513 218, fax: 541 513 217 Email: vustern@brn.czn.cz URL: www.vuste.cz</p> <p>Zásobování teplem s.r.o. Sukova 6, 678 01 Blansko tel.: 516 498 711, fax: 516 417 173 Email: info@zt-blansko.cz URL: www.zt-blansko.cz</p>

IMPORTANT COMPANIES IN THE REGION ACCORDING TO TURNOVER

Name of company	Location	Employees	Activity (Sector)	Turnover	WWW
Ahold Czech Republic, a.s.	Brno-sever - Lesná	10 000 - and more	Retail sale in non-specialized stores with food, beverages or tobacco	39 755	www.ahold.cz
Skanska DS, a.s.	Brno-jih - Horní Heršpice	2000 - 2499	Construction of motorways, roads, airfields and sport facilities	16 580	www.skanska.cz
Inventec (Czech), s.r.o.	Modřice	250 - 499	Other wholesale	14 794	
VB Leasing CZ, s.r.o.	Brno-střed - Štýřice	100 - 199	Financial leasing	9 535	www.vbleasing.cz
Alta, a.s.	Brno-Královo Pole - Ponava	50 - 99	Wholesale of metals and metal ores	8 586	www.alta.cz
Imos Brno, a.s.	Brno - Černovice	500 - 999	General construction of buildings and civil engineering works	6 781	www.imos.as
Vertikal Plus, s.r.o.	Brno-střed - Veverí	25 - 49	Joinery installation	5 686	www.vertikalplus.cz
Tyco Electronics Czech, s.r.o.	Kuřim	1500 - 1999	Manufacture of electrical equipment for engines and vehicles n.e.c.	5 314	www.tycoelectronics.cz
Zetor Trade, s.r.o.	Brno - Líšeň	25 - 49	Wholesale of agricultural machinery and accessories and implements, tractors	4 866	www.zetor.com
Andrew Telecommunications, s.r.o.	Modřice	500 - 999	Manufacture of television and radio receivers, sound or video apparatus	4 769	www.andrew.com
Českomoravský cement, a.s., nástupnická	Mokrá-Horákov	500 - 999	Manufacture of cement	4 663	www.cmcm.cz
Zetor Tractors, a.s.	Brno - Líšeň	1000 - 1499	Letting of own property	4 617	www.zetor.cz
United Bakeries, a.s.	Brno-jih - Horní Heršpice	1500 - 1999	Business and management consultancy activities	4 391	www.united-bakeries.cz
Pegas Nonwovens, s.r.o.	Znojmo	100 - 199	Letting of own property	4 341	www.pegas.cz
Železárný Veselí, a.s.	Veselí nad Moravou	500 - 999	Manufacture of steel tubes	4 099	www.zeves.cz
Moravské naftové doly, a.s.	Hodonín	250 - 499	Extraction of crude petroleum and natural gas	3 841	www.mnd.cz
Agrotec, a.s.	Hustopeče	250 - 499	Sale of motor vehicles	3 835	www.agrotec.cz
JMP Net, s.r.o.	Brno-střed - Zábřovice	25 - 49	Distribution and trade of gaseous fuels through mains	3 737	www.rwe-jmpnet.cz
Hortim - International, s.r.o.	Břeclav	500 - 999	Wholesale of fruit and vegetables	3 624	www.hortim.cz

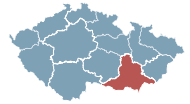
Source: Albertina Company Monitor

SELECTED CZECHINVEST PROJECTS IN THE REGION

Name	Location	Investor	Country	Sector	Year
Acer Czech Republic s.r.o.	Brno	Acer Europe BV	Netherlands	high tech repair centre	2005
Acision Czech Republic s.r.o.	Brno	LogicaCMG Holdings Limited	United Kingdom	shared services center	2006
APV Czech Republic s.r.o.	Brno	APV Invensys	United Kingdom	engineering	2007
Atento Česká republika a.s.	Brno	Atento Česká republika a.s.	Czech Republic	strategic services centre	2009
AVG Technologies CZ, s.r.o.	Brno	AVG Technologies, N.V.	Netherlands	IT, software development	2008
BenQ Technologies Czech s.r.o.	Brno	Benq Corporation	Tchaj-wan	electronics, electrotechnics	2005
BioVendor - Laboratorní medicína a.s.	Modřice	BioVendor - Laboratorní medicína a.s.	Czech Republic	biotechnology, medical equipment	2009
BLATA, s.r.o.	Blansko	Blata	Czech Republic	manufacture of motor vehicles	2003
Celestica Ráječko, s.r.o.	Ráječko u Blanska	Celestica	Canada	electronics, electrotechnics	1999
Daikin Device Czech republic s.r.o.	Brno	Daikin Industries	Japan	engineering	2004
DSG International SSC s.r.o.	Brno	DSG international plc	United Kingdom	other	2007
Edwards Services s.r.o.	Brno	The BOC Group	United Kingdom	repair centre	2006
EMERSON CLIMATE TECHNOLOGIES, s.r.o.	Mikulov	Emerson Copeland	USA	engineering	2005
Global Tele Sales Brno s.r.o.	Brno	Lufthansa Commercial GmbH	Germany	call centre	2005
HARTMANN - RICO a.s.	Havlíčkův Brod	Hartmann-Rico	Germany	other	2001
Hill's Pet Nutrition Manufacturing, s.r.o.	n.s.	Colgate-Palmolive	USA	food processing	2006
Honeywell, spol. s r.o.	Brno	Honeywell	Germany/USA	electronics, electrotechnics	2002
IDS Sheer ČR s.r.o.	Brno	IDS Sheer ČR s.r.o.	Luxembourg	IT, software development	2007
Infosys	Brno	Infosys Technologies Ltd.	India	shared services center	2004
KORFIL a.s.	Hustopeče	KORFIL	Czech Republic	chemistry, pharmacy	2005
Lohman & Rauscher s.r.o.	Slavkov u Brna	Lohmann & Rauscher International	Austria	biotechnology, medical equipment	2004
Monster Worldwide CZ s.r.o.	Brno	Monster Worldwide CZ s.r.o.	USA	shared services center	2008
MediClinic a.s.	Brno	Pentalinvestments	Slovakia	strategic services centre	2008
Pegas - DS a.s.	Znojmo	Pegas	Czech Republic	other	1998
PEGAS - NW a.s.	Znojmo	PEGAS NONWOVENS	Czech Republic	chemistry, pharmacy	2005
Red Hat Czech s.r.o.	Brno	Red Hat Limited	Ireland	software development	2006
Saint-Gobain Vertex, a.s.	Znojmo	Saint-Gobain Vertex	Germany	other	2001
SIAD Czech spol. s r.o.	Rajhradice	SIAD Czech	Italy	chemistry, pharmacy	2003
Software Development Europe s.r.o.	Brno	Jeffrey Kent Smith (fyzická osoba)	USA	IT, software development	2008
Symbol Technologies Czech Republic, s.r.o.	Brno	Symbol Technologies Czech Republic	USA	repair centre	2003
TietoEnator Consulting, a.s.	Brno	TietoEnator Consulting, a.s.	Czech Republic	IT, software development	2009
Tyco Electronic Czech s.r.o.	Kuřim	Tyco	USA	electronics, electrotechnics	2000
Wienerberger cihelna Hodonín spol. s r.o.	Hodonín	Wienerberger AG	Austria	other	2007
Solarwinds Czech s.r.o.	Brno	Solarwinds Software Europe Limited	USA	IT, software development	2007

Source: Czechinvest

DISTRICT BLANSKO



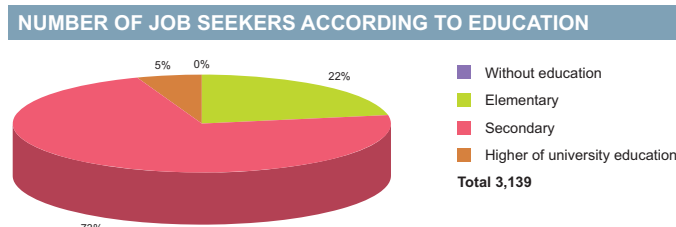
BASIC DATA	
Land Area	942 km ²

TOWNS WITH POPULATION OVER 5,000	
Blansko	20,920
Boskovice	10,928
Letovice	6,914

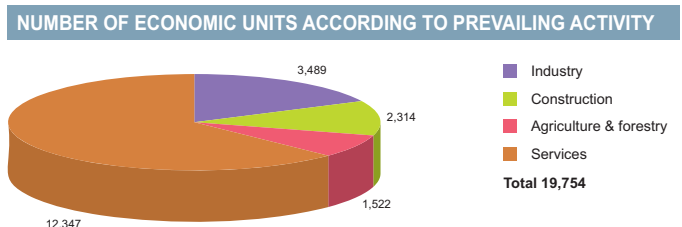
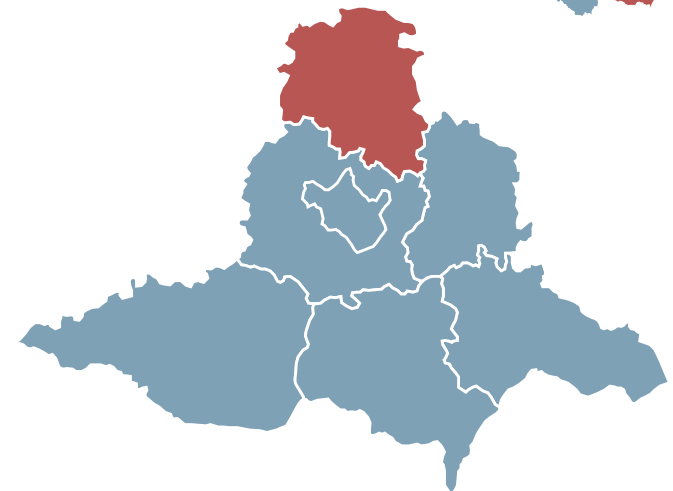
Source: Czech Statistical Office

ACTUAL SITUATION ON LABOUR MARKET	
Population	106,214
Percentage in the total population of Czech Republic (%)	9.3
Population density (person/km ²)	112.8
Workforce	51,409
Number of job seekers	4,963
Unemployment rate (%)	9.3

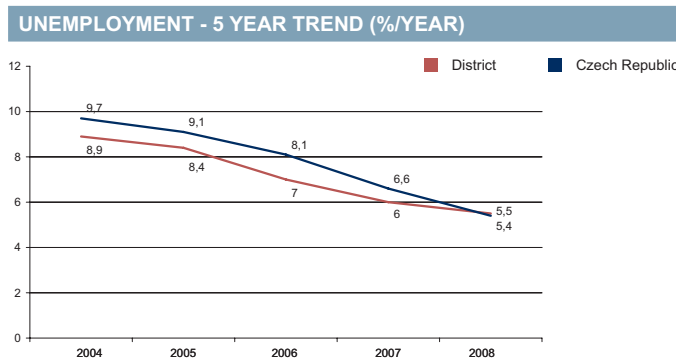
Source: Czech Statistical Office, Ministry of Labour and Social Affairs



Source: Ministry of Labour and Social Affairs



Source: Czech Statistical Office



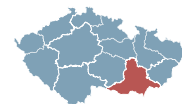
Source: Czech Statistical Office

FOREIGN DIRECT INVESTMENT		
	FDI (CZK)	FDI (EUR)
Blansko	5 724 077	215 029
CR (total)	2 032 111 185	76 337 761
Prague	1 049 062 899	39 408 824
South Moravia Average	11 913 672	447 546

Source: Czech National Bank

IMPORTANT COMPANIES IN THE DISTRICT ACCORDING TO TURNOVER						
Name of company	Location	Employees	Activity (Sector)	Turnover	www	
Celestica Czech Republic, s.r.o.	Ráječko	2000 - 2499	Manufacture of computers and other information processing equipment	15 402	www.celestica.cz	
P - D Refractories CZ, a.s.	Velké Opatovice	500 - 999	Manufacture of refractory ceramic products	1 377	www.mslz.cz	
Novibra Boskovice, s.r.o.	Boskovice	250 - 499	Manufacture of machinery for textile, apparel and leather production	1 039	www.novibra.cz	
Alps Electric Czech, s.r.o.	Boskovice	500 - 999	Manufacture of television and radio receivers, sound or video apparatus	1000 - 1499 mil.	www.alps.cz	
Minerva Boskovice, a.s.	Boskovice	500 - 999	Manufacture of machinery for textile, apparel and leather production	982	www.minerva-boskovice.com	
Mlékárna Olešnice, rolnické mlékařské	Olešnice	100 - 199	Operation of dairies and cheese making	824	www.mleko.cz	
Jednota, spotřební družstvo	Boskovice	n/a	Retail sale in non-specialized stores with food, beverages or tobacco predominating	820	www.jednotabce.cz	
DSB Euro, s.r.o.	Blansko	250 - 499	Business and management consultancy activities	785	www.dsblansko.cz	
Ilab Shop Concept CZ, a.s.	Blansko	100 - 199	Manufacture of other furniture	782	www.aposblansko.cz	
Metra Blansko, a.s.	Blansko	1000 - 1499	Manuf. of instruments and appliances for measuring, checking, testing, navigating	630	www.metra.cz	
Adast, a.s.	Adamov	500 - 999	Manufacture of machinery and equipment for printing, stitching and book binding	612	www.adast.cz	
Bodos Czechia, a.s.	Boskovice	n/a	Freight transport by road	584	www.bodosczechia.cz	
Stavebniny ŠKB, s.r.o.	Letovice	6 - 9	Other wholesale	579		
Elkov elektro, a.s.	Blansko	50 - 99	Wholesale of other electronic parts and equipment	538	www.elkov.cz	
Letoplast, s.r.o.	Letovice	250 - 499	Manufacture of wooden containers	531	www.letoplast.cz	
Michal Kugler	Blansko	1 - 5	Restaurants	500 - 999 mil.		
Město Blansko	Blansko	200 - 249	General (overall) public service activities	500 - 999 mil.	www.blansko.cz	
ČKD Blansko Strojírny, a.s.	Blansko	250 - 499	General construction of buildings and civil engineering works	500 - 999 mil.	www.cdblansko.cz	
Baumüller Bmo, s.r.o.	Skalice nad Svitavou	250 - 499	Manufacture of electric motors, generators and transformers	500 - 999 mil.	www.baumueller.de	
Apos - auto, s.r.o.	Blansko	250 - 499	Manufacture of parts and accessories for motor vehicles and their engines	500 - 999 mil.	www.apos-auto.cz	

DISTRICT BRNO-CITY



BASIC DATA

Land Area	230 km ²
-----------	---------------------

TOWNS WITH POPULATION OVER 5,000

Brno	368,533
------	---------

Source: Czech Statistical Office

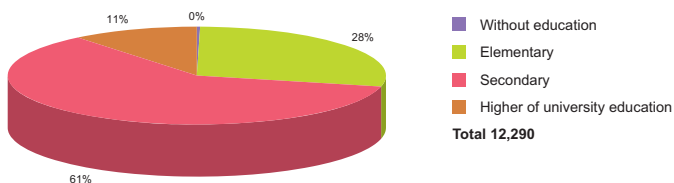


ACTUAL SITUATION ON LABOUR MARKET

Population	370,470
Percentage in the total population of Czech Republic (%)	32.3
Population density (person/km ²)	1,610.7
Workforce	212,055
Number of job seekers	14,920
Unemployment rate (%)	6.9

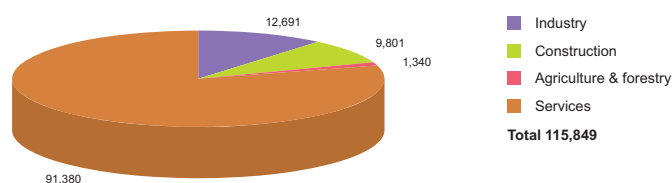
Source: Czech Statistical Office, Ministry of Labour and Social Affairs

NUMBER OF JOB SEEKERS ACCORDING TO EDUCATION



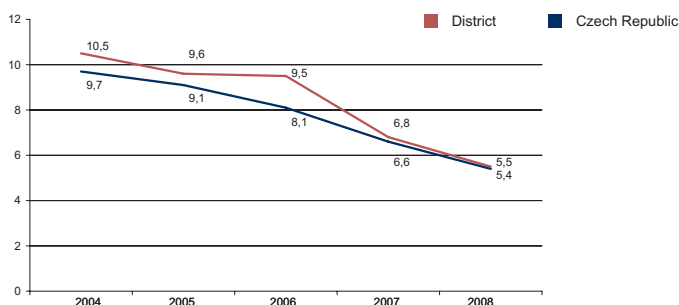
Source: Ministry of Labour and Social Affairs

NUMBER OF ECONOMIC UNITS ACCORDING TO PREVAILING ACTIVITY



Source: Czech Statistical Office

UNEMPLOYMENT - 5 YEAR TREND (%/YEAR)



Source: Czech Statistical Office

FOREIGN DIRECT INVESTMENT

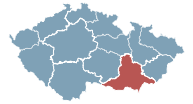
	FDI (CZK)	FDI (EUR)
Brno-city	41 579 756	1 561 974
CR (total)	2 032 111 185	76 337 761
Prague	1 049 062 899	39 408 824
South Moravia Average	11 913 672	447 546

Source: Czech National Bank

IMPORTANT COMPANIES IN THE DISTRICT ACCORDING TO TURNOVER

Name of company	Location	Employees	Activity (Sector)	Turnover	www
Ahold Czech Republic, a.s.	Brno-sever - Lesná	10 000 - and more	Retail sale in non-specialized stores with food, beverages or tobacco predominating	39 755	www.ahold.cz
con animo, s.r.o.	Brno-střed - Veveří	1 - 5	Letting of own property	17 910	
Skanska DS, a.s.	Brno-jih - Horní Heršpice	2000 - 2499	Construction of motorways, roads, airfields and sport facilities	16 580	www.skanska.cz
VB Leasing CZ, s.r.o.	Brno-střed - Štýřice	100 - 199	Financial leasing	9535	www.vbleasing.cz
Alta, a.s.	Brno-Královo Pole - Ponava	50 - 99	Wholesale of metals and metal ores	8 586	www.alta.cz
Imos Brno, a.s.	Brno - Černovice	500 - 999	General construction of buildings and civil engineering works	6 781	www.imos.as
Vertikal Plus, s.r.o.	Brno-střed - Veveří	25 - 49	Joinery installation	5 686	www.vertikalplus.cz
Zetor Trade, s.r.o.	Brno - Lišeň	25 - 49	Wholesale of agricultural machinery and accessories and implements, including tractors	4 866	www.zetor.com
Zetor Tractors, a.s.	Brno - Lišeň	1000 - 1499	Letting of own property	4 617	www.zetor.cz
United Bakeries, a.s.	Brno-jih - Horní Heršpice	1500 - 1999	Business and management consultancy activities	4 391	www.united-bakeries.cz
JMP Net, s.r.o.	Brno-střed - Zábřovice	25 - 49	Distribution and trade of gaseous fuels through mains	3 737	www.rwe-jmpnet.cz
Hortim - International, s.r.o.	Břeclav	500 - 999	Wholesale of fruit and vegetables	3 624	www.hortim.cz
Coop Morava, s.r.o.	Brno-střed - Brno-město	20 - 24	Non-specialized wholesale of food, beverages and tobacco	3 411	www.coopmorava.cz
Penam, a.s.	Brno-střed - Zábřovice	2000 - 2499	Manufacture of bread; manufacture of fresh pastry goods and cakes	3 241	www.penam.cz
C & a Moda, s.r.o.	Brno-střed - Brno-město	n/a	Other wholesale	3 241	
Siemens Industrial Turbomachinery, s.r.o.	Brno - Židenice	500 - 999	Manufacture of machinery for the production and use of mechanical power	2947	www.siemens.cz
Nová Mosilana, a.s.	Brno - Černovice	500 - 999	Worsted-type weaving	2788	www.mosilana.cz
Česká lékárna, a.s.	Brno - Královo Pole	250 - 499	Dispensing chemists	2582	www.ceskalekarna.cz
UNICORN - Oil, s.r.o.	Brno-jih - Horní Heršpice	6 - 9	Retail sale of automotive fuel	2263	
Remet, s.r.o.	Brno-jih - Přízřenice	100 - 199	Recycling of metal waste and scrap	2151	

DISTRICT BRNO-COUNTRYSIDE



BASIC DATA

Land Area	1,238 km ²
-----------	-----------------------

TOWNS WITH POPULATION OVER 5,000

Kuřim	10,285	Šlapanice	6,758
Ivančice	9,303	Rosice	5,427
Tišnov	8,485		

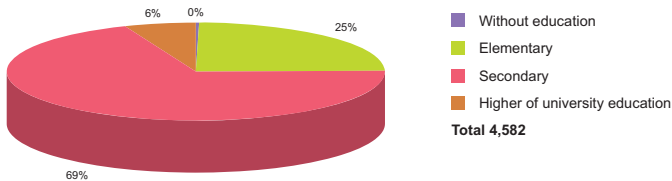
Source: Czech Statistical Office

ACTUAL SITUATION ON LABOUR MARKET

Population	198,257
Percentage in the total population of Czech Republic (%)	17.3
Population density (person/km ²)	160.1
Workforce	102,690
Number of job seekers	6,254
Unemployment rate (%)	5.9

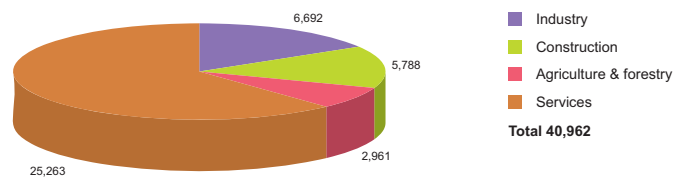
Source: Czech Statistical Office, Ministry of Labour and Social Affairs

NUMBER OF JOB SEEKERS ACCORDING TO EDUCATION



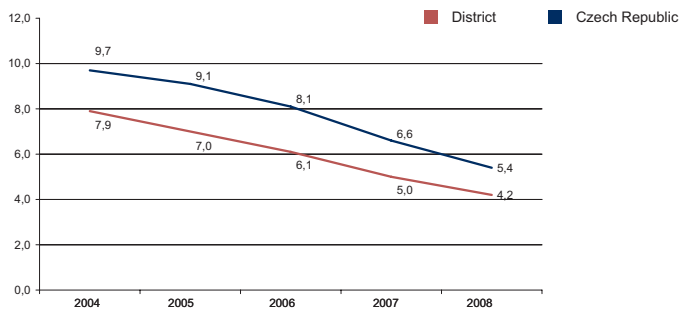
Source: Ministry of Labour and Social Affairs

NUMBER OF ECONOMIC UNITS ACCORDING TO PREVAILING ACTIVITY



Source: Czech Statistical Office

UNEMPLOYMENT - 5 YEAR TREND (%/YEAR)



Source: Czech Statistical Office

FOREIGN DIRECT INVESTMENT

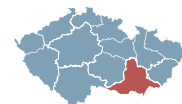
	FDI (CZK)	FDI (EUR)
Brno-countryside	19 207 138	721 530
CR (total)	2 032 111 185	76 337 761
Prague	1 049 062 899	39 408 824
South Moravia Average	11 913 672	447 546

Source: Czech National Bank

IMPORTANT COMPANIES IN THE DISTRICT ACCORDING TO TURNOVER

Name of company	Location	Employees	Activity (Sector)	Turnover	www
Inventec (Czech), s.r.o.	Modřice	250 - 499	Other wholesale	14 794	
Tyco Electronics Czech, s.r.o.	Kuřim	1500 - 1999	Manufacture of electrical equipment for engines and vehicles n.e.c.	5 314	www.tycoelectronics.cz
Andrew Telecommunications, s.r.o.	Modřice	500 - 999	Manufacture of television and radio receivers, sound or video apparatus	4 769	www.andrew.com
Českomoravský cement, a.s., nástupnická	Mokrá-Horákov	500 - 999	Manufacture of cement	4 663	www.cmccm.cz
Hartmann - Rico, a.s.	Veverská Bílýška	1500 - 1999	Manufacture of cotton-wool and dressing materials	3 453	www.hartmann-rico.cz
Juli Motorenwerk, s.r.o.	Moravany	250 - 499	Manufacture of electric motors, generators and transformers	2 732	www.juli.cz
Xella CZ, s.r.o.	Hrušovany u Brna	250 - 499	Manufacture of concrete products for construction purposes	2 137	www.hebel.cz
Ife - cr, a.s.	Modřice	250 - 499	Manufacture of railway and tramway locomotives and rolling stock	2 075	www.ife.cz
Českomoravský štěrk, a.s.	Mokrá-Horákov - Mokrá	250 - 499	Other wholesale	1 694	www.cmsterk.cz
Wood & Paper, a.s.	Hlína	10 - 19	Wholesale of wood, construction materials and sanitary equipment	1500 mil. and more	www.wood-paper.cz
Ptáček - velkoobchod, a.s.	Modřice	500 - 999	Wholesale of hardware, plumbing and heating equipment and supplies	1500 mil. and more	www.ptacek.cz
Metaldyne Oslavany, s.r.o.	Oslavany	200 - 249	Forging, pressing, stamping and roll forming of metal; powder metallurgy	1500 mil. and more	www.metaldyne.cz
Konsorcium B+K, s.r.o.	Šlapanice	1 - 5	Wholesale of solid, liquid and gaseous fuels and related products	1500 mil. and more	
Deceuninck, s.r.o.	Popůvky	50 - 99	Other wholesale	1 437	www.deceuninck.cz
Bachl, s.r.o.	Modřice	n/a	Manufacture of plastic plates, sheets, tubes and profiles	1 214	www.bachl.cz
Kovolit, a.s.	Modřice	500 - 999	Casting of light metals	1 140	www.kovolit.cz
Siemens Electric Machines, s.r.o.	Drásov	500 - 999	Manufacture of electric motors, generators and transformers	1 108	www.sem.cz
Truck Trade, s.r.o.	Brno - Modřice	50 - 99	Sale of motor vehicles	1 059	www.dafrucktrade.cz
Walter, s.r.o.	Kuřim	100 - 199	Manufacture of other metalworking machine tools	1000 - 1499 mil.	www.walter-machines.com
Lega - inox, s.r.o.	Otmárov	50 - 99	Wholesale of hardware, plumbing and heating equipment and supplies	1000 - 1499 mil.	www.lega.cz

DISTRICT BŘECLAV



BASIC DATA

Land Area	1,174 km ²
-----------	-----------------------

TOWNS WITH POPULATION OVER 5,000

Břeclav	24,319
Hustopeče	7,478
Mikulov	5,950

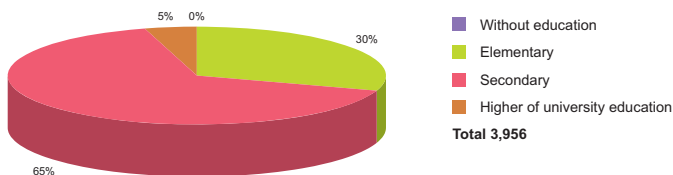
Source: Czech Statistical Office

ACTUAL SITUATION ON LABOUR MARKET

Population	113,465
Percentage in the total population of Czech Republic (%)	9.9
Population density (person/km ²)	96.6
Workforce	60,674
Number of job seekers	5,554
Unemployment rate (%)	9.0

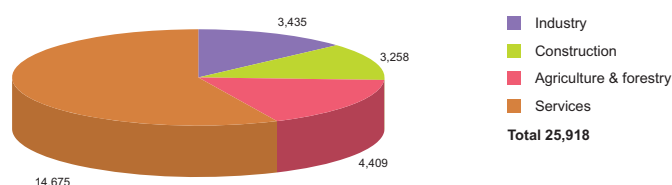
Source: Czech Statistical Office, Ministry of Labour and Social Affairs

NUMBER OF JOB SEEKERS ACCORDING TO EDUCATION



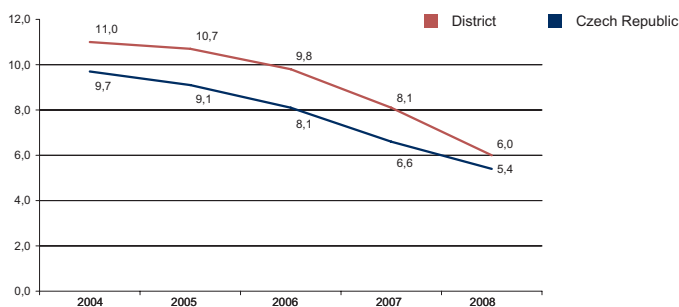
Source: Ministry of Labour and Social Affairs

NUMBER OF ECONOMIC UNITS ACCORDING TO PREVAILING ACTIVITY



Source: Czech Statistical Office

UNEEMPLOYMENT - 5 YEAR TREND (%/YEAR)



Source: Czech Statistical Office

FOREIGN DIRECT INVESTMENT

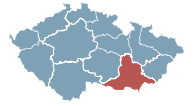
	FDI (CZK)	FDI (EUR)
Břeclav	3 696 690	138 869
CR (total)	2 032 111 185	76 337 761
Prague	1 049 062 899	39 408 824
South Moravia Average	11 913 672	447 546

Source: Czech National Bank

IMPORTANT COMPANIES IN THE DISTRICT ACCORDING TO TURNOVER

Name of company	Location	Employees	Activity (Sector)	Turnover	www
Agrotec, a.s.	Hustopeče	250 - 499	Sale of motor vehicles	3 835	www.agrotec.cz
Gumotex, a.s.	Břeclav	1500 - 1999	Manufacture of plastic plates, sheets, tubes and profiles	2 860	www.gumotex.cz
Otis, a.s.	Břeclav	250 - 499	Manufacture of lifting and handling equipment	1500 mil. and more	
Karel Hurta	Hustopeče	1 - 5	Plumbing	1500 mil. and more	www.hurta-thermaltrend.cz
Gebauer a Griller Kabeltechnik, s.r.o.	Mikulov	250 - 499	Manufacture of insulated wire and cable	1500 mil. and more	www.griller.at
Signum, s.r.o.	Hustopeče	n/a	Treatment and coating of metals	1 327	www.signumcz.com
Jednota, spotřební družstvo v Mikulově	Mikulov	n/a	Retail sale in non-specialized stores with food, beverages or tobacco	1 231	www.jednota.cz
Ramico, s.r.o.	Břeclav - Poštorná	6 - 9	Other wholesale	1 175	
Otis Escalators, s.r.o.	Břeclav	250 - 499	Manufacture of lifting and handling equipment	1000 - 1499 mil.	www.otis.com
Moraviapress, a.s.	Břeclav	250 - 499	Publishing of journals and periodicals	1000 - 1499 mil.	www.moraviapress.cz
Fosfa, a.s.	Břeclav - Poštorná	250 - 499	Manufacture of other inorganic basic chemicals	1000 - 1499 mil.	www.fosfa.cz
Flaga Český Plyn, s.r.o.	Hustopeče u Brna	200 - 249	Wholesale of solid, liquid and gaseous fuels and related products	1000 - 1499 mil.	www.flaga.cz
ZFP akademie, a.s.	Břeclav	n/a	Activities auxiliary to insurance and pension funding	888	www.zfpa.cz
Manuli Hydraulics Europe, s.r.o.	Pohořelice	50 - 99	Other wholesale	850	www.manuli-hydraulics.com
Heat Transfer Systems, s.r.o.	Novosedly	200 - 249	Manufacture of non-domestic cooling and ventilation equipment	822	www.htsystems.cz
Agri CS, a.s.	Hustopeče	1 - 5	Other wholesale	813	www.agrics.cz
Molitan, a.s.	Břeclav	n/a	Manufacture of plastic products	725	
Belagra, a.s.	Hustopeče	50 - 99	Manufacture of prepared feeds for farm animals	650	www.belagra.cz
Bors Břeclav, a.s.	Břeclav	250 - 499	Freight transport by road	640	www.bors.cz

DISTRICT HODONÍN



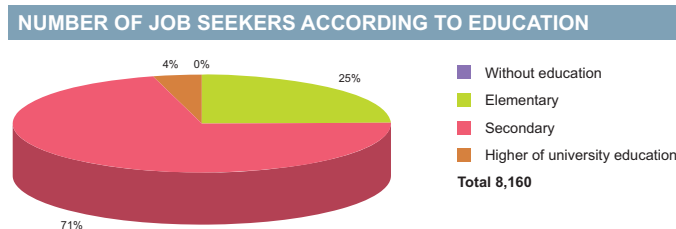
BASIC DATA	
Land Area	1,086 km ²

TOWNS WITH POPULATION OVER 5,000			
Hodonín	25,897	Dubřany	6,533
Veselí nad Moravou	11,850	Strážnice	5,774
Kyjov	11,830		

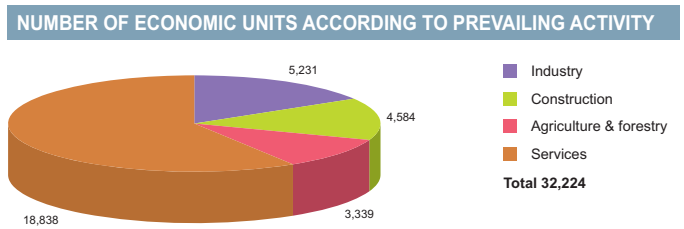
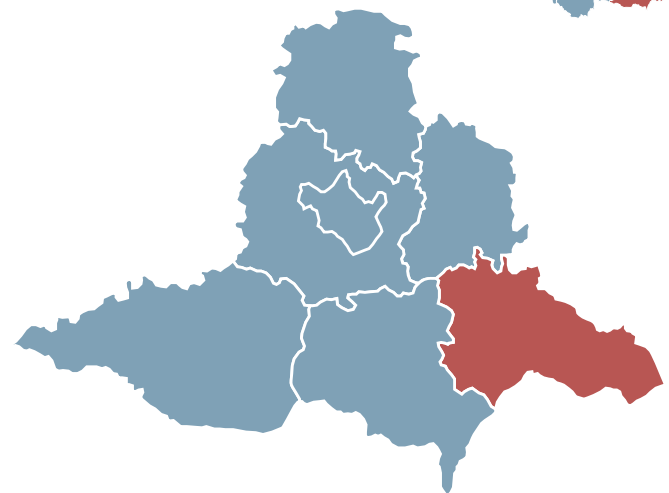
Source: Czech Statistical Office

ACTUAL SITUATION ON LABOUR MARKET	
Population	157,092
Percentage in the total population of Czech Republic (%)	13.7
Population density (person/km ²)	144.7
Workforce	77,436
Number of job seekers	10,273
Unemployment rate (%)	13.0

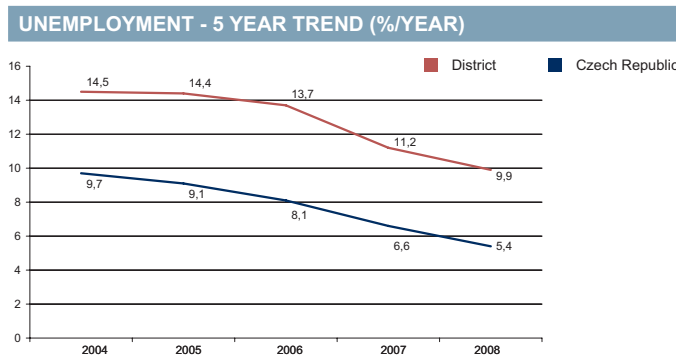
Source: Czech Statistical Office, Ministry of Labour and Social Affairs



Source: Ministry of Labour and Social Affairs



Source: Czech Statistical Office



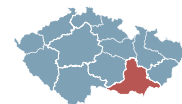
Source: Czech Statistical Office

FOREIGN DIRECT INVESTMENT		
	FDI (CZK)	FDI (EUR)
Hodonín	3 998 126	150 193
CR (total)	2 032 111 185	76 337 761
Prague	1 049 062 899	39 408 824
South Moravia Average	11 913 672	447 546

Source: Czech National Bank

IMPORTANT COMPANIES IN THE DISTRICT ACCORDING TO TURNOVER					
Name of company	Location	Employees	Activity (Sector)	Turnover	www
Železářny Veselí, a.s.	Veselí nad Moravou	500 - 999	Manufacture of steel tubes	4 099	www.zeves.cz
Moravské naftové doly, a.s.	Hodonín	250 - 499	Extraction of crude petroleum and natural gas	3 841	www.mnd.cz
Vetropack Moravia Glass, a.s.	Kyjov	500 - 999	Manufacture of household and ornamental glassware	2 588	www.vetropack.cz
ZZN Pomoraví, a.s.	Hodonín	100 - 199	Manufacture of prepared feeds for farm animals	2 110	www.zznpomoravi.cz
ČSAD Hodonín, a.s.	Hodonín	500 - 999	Freight transport by road	1 706	www.csad-ho.cz
Kordárna, a.s.	Velká nad Veličkou	n/a	Manufacture of impregnated, coated or laminated textile materials	5 611	www.kordarna.cz
Ing. Petr Čechovský	Hodonín	50 - 99	Restaurants	1500 mil. and more	
Britterm, s.r.o.	Moravský Písek	n/a	Other wholesale	1 299	
TOP Centrum car, s.r.o.	Kyjov	n/a	Sale of motor vehicles	1 279	www.topcencar.cz
Jihomoravská armaturka, s.r.o.	Hodonín	500 - 999	Manufacture of taps and valves	1 126	www.jmahod.cz
Slovmlýn, s.r.o.	Velká nad Veličkou	100 - 199	Manufacture of refined oils and fats	1000 - 1499 mil.	
Delimax, a.s.	Hodonín	250 - 499	Other wholesale	1000 - 1499 mil.	
T Machinery, a.s.	Ratíškovice	100 - 199	Other business activities n.e.c.	984	www.tmachinery.cz
Jednota, spotřební družstvo v Hodoníně	Hodonín	n/a	Retail sale in non-specialized stores with food, beverages or tobacco predominating	968	www.jednota-hodonin.cz
TPK, s.r.o.	Hodonín	250 - 499	Operation of dairies and cheese making	945	www.tpk.cz
RI Okna, a.s.	Bzenec	200 - 249	Manufacture of builders' ware of plastic	914	www.ri-okna.cz
Šroubárna Kyjov, s.r.o.	Kyjov	250 - 499	Manufacture of fasteners, screw machine products, chain and springs	908	www.sroubk.cz
Ploma, a.s.	Hodonín	500 - 999	Manufacture of veneer sheets; manufacture of plywood, laminboard, particle board	892	www.ploma.cz
MND Servisní, a.s.	Lužice	100 - 199	General mechanical engineering	821	servisni.mnd.cz
KM Beta, a.s.	Hodonín	250 - 499	Manufacture of concrete products for construction purposes	666	www.kmbeta.cz

DISTRICT VYŠKOV



BASIC DATA

Land Area	889 km ²
-----------	---------------------

TOWNS WITH POPULATION OVER 5,000

Vyškov	21,901	Slavkov u Brna	6,139
Bučovice	6,453	Rousínov	5,088

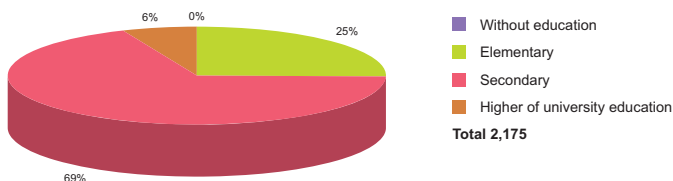
Source: Czech Statistical Office

ACTUAL SITUATION ON LABOUR MARKET

Population	88,033
Percentage in the total population of Czech Republic (%)	7.7
Population density (person/km ²)	99.0
Workforce	45,503
Number of job seekers	3,241
Unemployment rate (%)	7.0

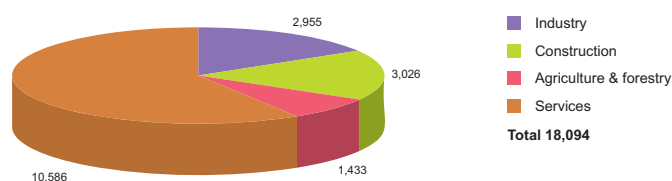
Source: Czech Statistical Office, Ministry of Labour and Social Affairs

NUMBER OF JOB SEEKERS ACCORDING TO EDUCATION



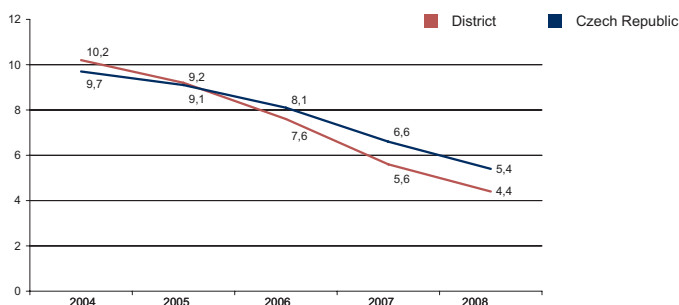
Source: Ministry of Labour and Social Affairs

NUMBER OF ECONOMIC UNITS ACCORDING TO PREVAILING ACTIVITY



Source: Czech Statistical Office

UNEMPLOYMENT - 5 YEAR TREND (%/YEAR)



Source: Czech Statistical Office

FOREIGN DIRECT INVESTMENT

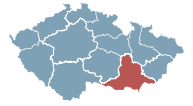
	FDI (CZK)	FDI (EUR)
Vyškov	4 103 316	154 144
CR (total)	2 032 111 185	76 337 761
Prague	1 049 062 899	39 408 824
South Moravia Average	11 913 672	447 546

Source: Czech National Bank

IMPORTANT COMPANIES IN THE DISTRICT ACCORDING TO TURNOVER

Name of company	Location	Employees	Activity (Sector)	Turnover	www
American game, s.r.o.	Komořany	100 - 199	Gambling and betting activities	2 543	
BKR ČR, s.r.o.	Vyškov - Předměstí	250 - 499	Manufacture of builders' ware of plastic	1 928	
Admiral Global Betting, a.s.	Komořany	20 - 24	Renting of personal and household goods n.e.c.	1 811	
Morava, mlékařské odbytové družstvo	Vyškov - Brňany	1 - 5	Wholesale of dairy produce, eggs and edible oils and fats	1 761	web.telecom.cz/morava
Lear Corporation Electrical and	Vyškov - Město	250 - 499	Manufacture of other electrical equipment n.e.c.	1500 mil. and more	www.lear.com
JAF Holz, s.r.o.	Vyškov - Předměstí	200 - 249	Wholesale of wood, construction materials and sanitary equipment	2 335	www.jafholz.cz
Lohmann & Rauscher, s.r.o.	Slavkov u Brna	500 - 999	Manufacture of cotton-wool and dressing materials	1404	www.lohmann-rauscher.cz
Bajer a spol., s.r.o.	Bučovice	100 - 199	Production and preserving of meat	1 138	
Paradise Casino Admiral, a.s.	Komořany	100 - 199	Gambling and betting activities	1 040	www.casinoadmiral.cz
Fritzmeier, s.r.o.	Vyškov	250 - 499	Manufacture of other special purpose machinery	1000 - 1499 mil.	www.fritzmeier.cz
fischer Vyškov, s.r.o.	Vyškov - Křečkovice	200 - 249	Manufacture of fasteners, screw machine products, chain and springs	775	www.fischerwerke.cz
Liko - s, a.s.	Slavkov u Brna	200 - 249	General construction of buildings and civil engineering works	645	www.liko-s.cz
Spectrum, s.r.o.	Vyškov - Předměstí	100 - 199	Manufacture of other electrical equipment n.e.c.	632	www.spectrum-cz.cz
Magnum Parket, a.s.	Vyškov - Předměstí	200 - 249	Manufacture of builders' carpentry and joinery	587	www.magnumparket.cz
Slavkovské krmné směsi, a.s.	Bučovice - Marefy	50 - 99	Manufacture of prepared feeds for farm animals	548	www.sksmarefy.cz
Bioveta, a.s.	Ivanovice na Hané	250 - 499	Manufacture of pharmaceutical preparations	528	www.bioveta.cz
Staege, s.r.o.	Vyškov - Předměstí	200 - 249	Other retail sale in specialized stores	500 - 999 mil.	www.staeg.cz
Chemis engine, a.s.	Slavkov u Brna	50 - 99	Wholesale of solid, liquid and gaseous fuels and related products	500 - 999 mil.	
FenStar, s.r.o.	Hodějice	250 - 499	Manufacture of builders' ware of plastic	483	
Rostěnice, a.s.	Rostěnice 49	200 - 249	Growing of crops combined with farming of animals (mixed farming)	469	

DISTRICT ZNOJMO



BASIC DATA	
Land Area	1,637 km ²

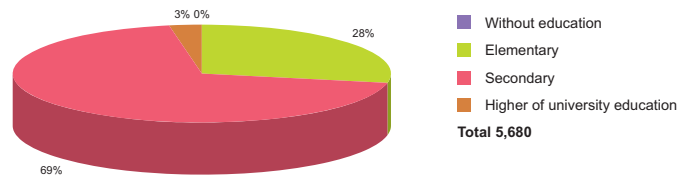
TOWNS WITH POPULATION OVER 5,000	
Znojmo	34,735
Moravský Krumlov	5,993

Source: Czech Statistical Office

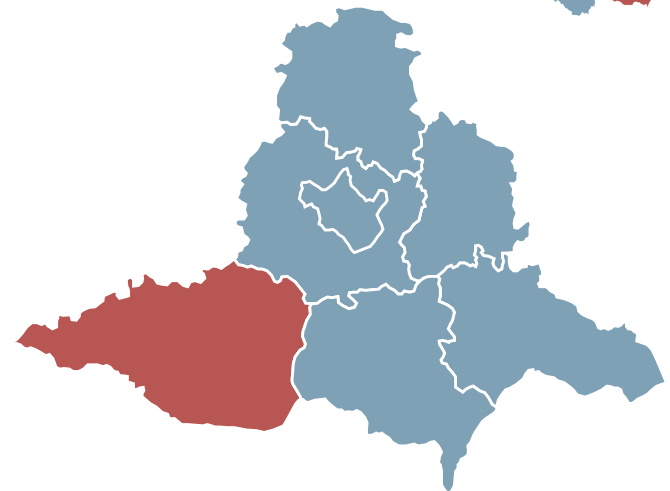
ACTUAL SITUATION ON LABOUR MARKET	
Population	113,272
Percentage in the total population of Czech Republic (%)	9.9
Population density (person/km ²)	69.2
Workforce	57,404
Number of job seekers	7,216
Unemployment rate (%)	12.3

Source: Czech Statistical Office, Ministry of Labour and Social Affairs

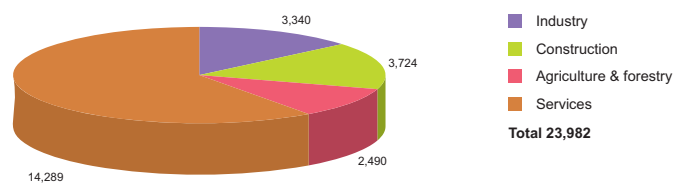
NUMBER OF JOB SEEKERS ACCORDING TO EDUCATION



Source: Ministry of Labour and Social Affairs

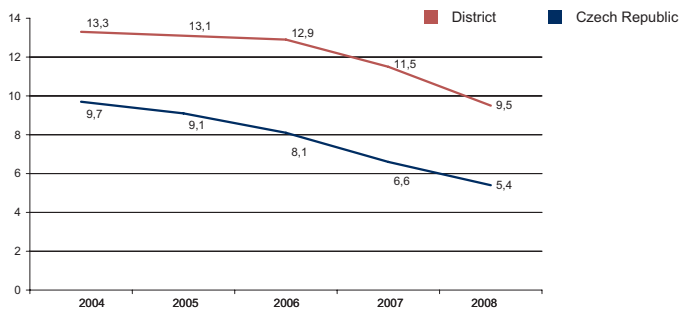


NUMBER OF ECONOMIC UNITS ACCORDING TO PREVAILING ACTIVITY



Source: Czech Statistical Office

UNEMPLOYMENT - 5 YEAR TREND (%/YEAR)



Source: Czech Statistical Office

FOREIGN DIRECT INVESTMENT

	FDI (CZK)	FDI (EUR)
Znojmo	5 086 601	191 082
CR (total)	2 032 111 185	76 337 761
Prague	1 049 062 899	39 408 824
South Moravia Average	11 913 672	447 546

Source: Czech National Bank

IMPORTANT COMPANIES IN THE DISTRICT ACCORDING TO TURNOVER

Name of company	Location	Employees	Activity (Sector)	Turnover	www
Pegas Nonovens, s.r.o.	Znojmo	100 - 199	Letting of own property	4 341	www.pegas.cz
Zenza Znojmo, a.s.	Znojmo - Příměčice	100 - 199	Wholesale of solid, liquid and gaseous fuels and related products	1 914	
S Morava Leasing, a.s.	Znojmo	100 - 199	Financial leasing	2 909	www.smorava.cz
Moravskoslezské cukrovary, a.s.	Hrušovany nad Jevišovkou	250 - 499	Manufacture of sugar	1500 mil. and more	www.cukrovar.cz
Pegas - DS, a.s.	Znojmo	50 - 99	Manufacture of non-wovens and articles made from non-wovens, except apparel	1 345	www.pegasas.cz
Agrodružstvo Jevišovice	Jevišovice	250 - 499	Growing of crops combined with farming of animals (mixed farming)	1 213	
Pegas-NT, a.s.	Znojmo	n/a	Manufacture of other textiles	1139	www.pegas.cz
Agrall zemědělská technika, a.s.	Bantice	25 - 49	Wholesale of agricultural machinery and accessories and implements, including tractors	1000 - 1499 mil.	www.agrall.cz
A + S, s.r.o.	Mirotslav	n/a	Wholesale of solid, liquid and gaseous fuels and related products	947	www.a-s.cz
Impress Znojmo, a.s.	Znojmo	100 - 199	Manufacture of light metal packaging	803	www.obalex.cz
Jednota, spotřební družstvo,	Moravský Krumlov	n/a	Retail sale in non-specialized stores with food, beverages or tobacco predominating	686	www.jednotamk.cz
Ronja, s.r.o.	Chvalovice - Hatě	100 - 199	Retail sale in non-specialized stores with food, beverages or tobacco predominating	500 - 999 mil.	www.excaliburcity.cz
Egston System Electronic, s.r.o.	Znojmo	500 - 999	Manufacture of electronic valves and tubes and other electronic components	764	www.egston.com
Cross Speed, s.r.o.	Branišovice	200 - 249	Freight transport by road	500 - 999 mil.	www.cross-speed.cz
Alena Zaričová	Mirotslav	10 - 19	Retail sale of automotive fuel	500 - 999 mil.	
Vapas, a.s.	Hrušovany nad Jevišovkou	100 - 199	Freight transport by road	499	www.vapas.cz
Odbytové družstvo Vrchovina	Jevišovice	1 - 5	Other wholesale	399	
Opametal, s.r.o.	Znojmo	50 - 99	Collection and treatment of other waste	395	www.opametal.cz
E.S. Processing, s.r.o.	Znojmo	50 - 99	Manufacture of plastic products	374	www.esprocessing.cz
Jatky Moravský Krumlov, s.r.o.	Moravský Krumlov	50 - 99	Production, processing and preserving of meat and meat products	334	www.jatkykrumlov.cz