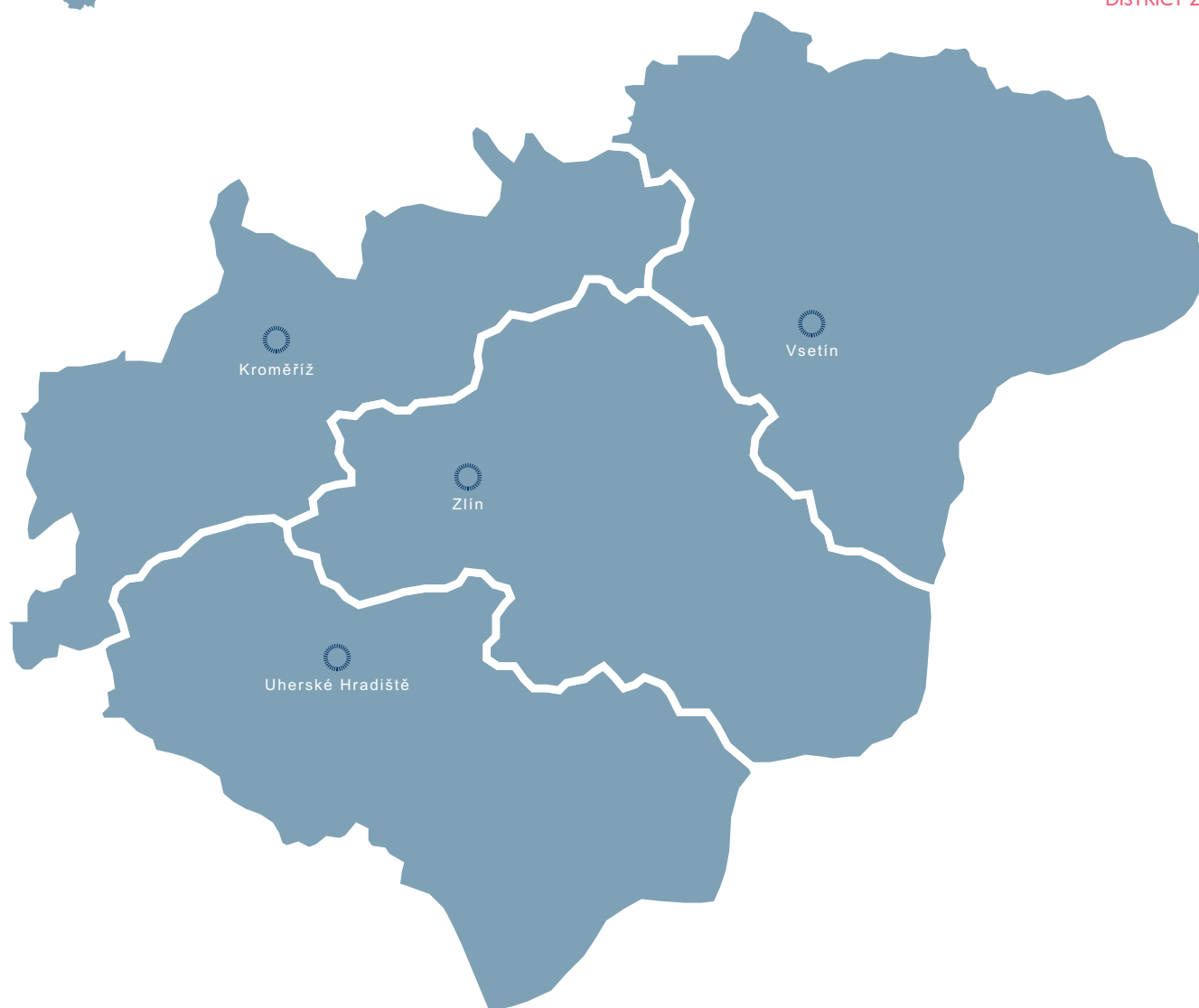


# ZLÍN REGION

DISTRICT KROMĚŘÍŽ  
DISTRICT UHERSKÉ HRADIŠTĚ  
DISTRICT VSETÍN  
DISTRICT ZLÍN



## ABOUT REGION

The Zlín Region is situated in the eastern part of Moravia along the Slovakian frontier. Otherwise it borders with regions South Moravia, Olomouc and Moravia-Silesia. It is divided among four districts: Kroměříž, Uherské Hradiště, Vsetín and Zlín. Its area is 3,963 km<sup>2</sup>, which is 5.0 % of the national territory, making it the 11th largest region in the country. As of there were 591,357 inhabitants, around 5.7 % of the population of the Czech Republic making it the 8th most populated region in the country. Its 304 communities make up for 4.9 % of all communities in the country. Zlín, with a population of 78,122, is the regional capital. There are 20 towns and cities with populations exceeding 5,000 in the region.

The Zlín Region is mountainous and very indented. Parts of two protected landscape areas are stretching to its territory, Beskydy and Bílé Karpaty. These mountains are sought after by tourists both in summer and in winter. Popularity in folk traditions is typical for this region. From among folklore events, taking place every year, there is Haná days in Chropyně, the Ride of Kings in Vlčnov, or Slivovitz Vintage days in Vizovice.

Tourists also like the large area of the Valašské museum in nature in Rožnov pod Radhoštěm. There has also been growing interest in Baťa's boating channel in the last several years. Religion has an important place in the life of local inhabitants. Velehrad belongs to the most important pilgrimage venues in the Czech Republic. The most valuable architectural monuments are concentrated in Kroměříž, which is also the only town in the region with an urban sanctuary. The castle with its gardens is the only landmark registered on the UNESCO list in the region of Zlín. Luhačovice is the most important spa in the region and this town is also trying to get to the UNESCO list of the world heritage.

Tomáš Baťa University in Zlín (UTB) has five colleges with specializations in economy, arts, chemistry and informatics. A branch of the Mining University is located in Uherský Brod, offering studies in machinery and the local specializations of firearms and ammunition. The European Polytechnic Institute is the oldest private university in Moravia. Seated in Kunovice, it offers studies in economy, management and informatics. It has a branch in Hodonín as well.

BASIC DATA	
Land Area	3,963 km <sup>2</sup>

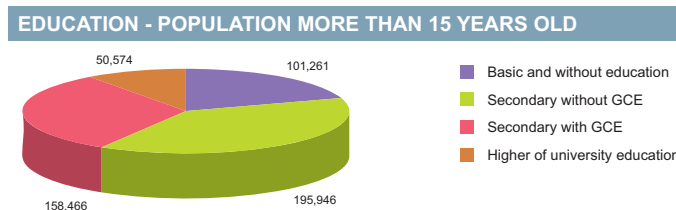
  

ACTUAL SITUATION ON LABOUR MARKET	
Population	591,357
Percentage in the total population of Czech Republic (%)	5.7
Population density (person/km <sup>2</sup> )	149.2
Workforce	307,341
Number of job seekers	26,603
Unemployment rate (%)	8.4

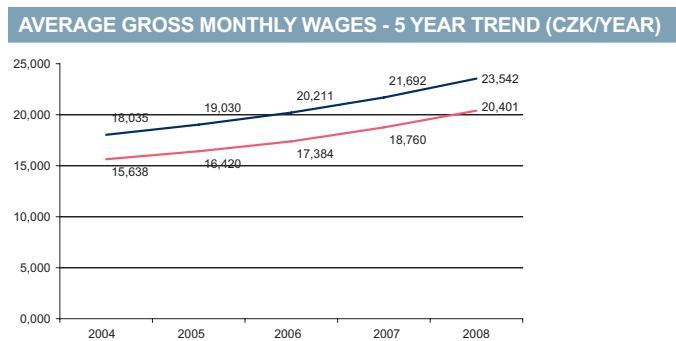
Source: Czech Statistical Office, Ministry of Labour and Social Affairs

NUMBER OF ECONOMIC UNITS ACCORDING TO PREVAILING ACTIVITY	
<b>Total</b>	<b>134,373</b>
Industry	23,168
Construction	16,206
Agriculture & forestry	10,316
Services	83,920

Source: Czech Statistical Office



Source: Czech Statistical Office



Source: Czech Statistical Office

GDP BY REGIONS				
Region	TOTAL		Per capita	
	mln. CZK	mln. EUR	Total CZK	Total EUR
Zlín	167 186	6 703	283 366	10 205
Average GDP for Czech regions	252 161	10 110	341 989	13 711
Share in GDP of the Czech Republic	5%			

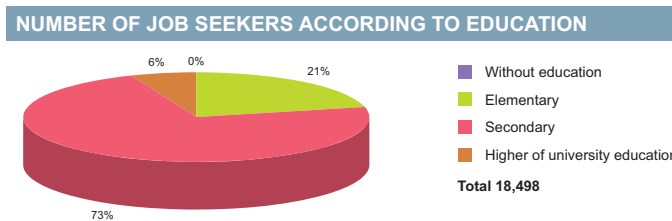
Source: Czech Statistical Office

ADMINISTRATIVE BREAKDOWN	
Number of districts	4
Number of municipalities	304
of that, number of towns	30

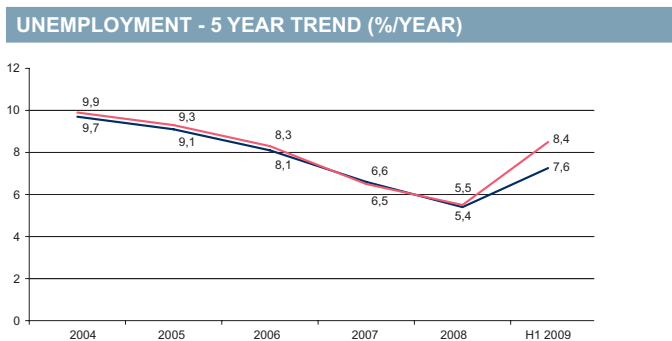
Source: Czech Statistical Office

NUMBER OF EMPLOYEES AND GROSS MONTHLY WAGES IN MANUFACTURING ACCORDING TO NACE CLASSIFICATION		
	Number of employees	Wages (EUR)
<b>Manufacturing</b>	<b>53,376</b>	<b>860</b>
Man. of food products, beverages and tobacco products	4,234	771
Man. of chemical, chemical products, pharmaceuticals, and chemical fibres	2,917	1,057
Man. of rubber and plastic products	11,571	983
Man. of basic metals and fabricated metal products	7,884	877
Man. and repairs of machinery and equipment	6,332	970
Man. of electrical and optical equipment	8,807	752
Man. of transport equipment	3,405	790

Source: Czech Statistical Office



Source: Ministry of Labour and Social Affairs



Source: Czech Statistical Office

FOREIGN DIRECT INVESTMENT		
Region	FDI (CZK)	FDI (EUR)
min.	17 940 192	673 937
Zlín	36 842 575	1 384 019
max.	1 049 062 899	39 408 824
Average	145 150 799	5 452 697

Source: Czech National Bank

AVERAGE GROSS MONTHLY WAGES - 5 YEAR TREND										
Year	2004		2005		2006		2007		2008	
	CZK	EUR	CZK	EUR	CZK	EUR	CZK	EUR	CZK	EUR
Zlín	15,638	490	16,420	551	17,384	613	18,760	676	20,401	818
Average for Czech Republic	18,035	565	19,030	639	20,211	713	21,692	781	23,542	944

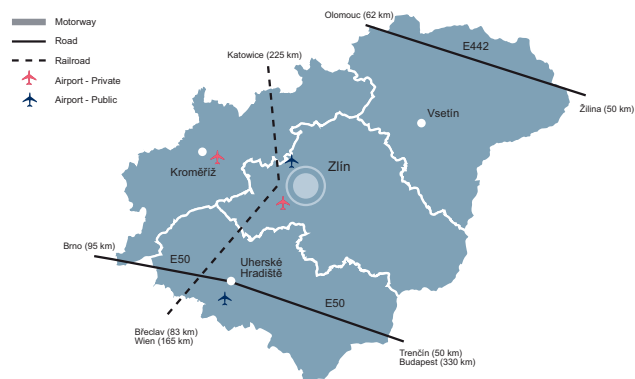
Source: Czech Statistical Office

LIST OF AIRPORTS	Specification		
	Public/Private	Civil/Military/Varied	International/Intranational
Holešov	Public	Civil	Intranational
Kroměříž	Private	Civil	Intranational
Kunovice	Private	Civil	International
Otrokovice	Private	Civil	International

Source: Ministry of Transport, Aerobaze.cz

SCHOOL SYSTEM	Number of schools	Number of students	Number of graduates
<b>Secondary schools</b>			
Technical fields	n/a	9 901	2 460
Economic fields	n/a	9 020	2 486
ICT fields	n/a	2 675	729
<b>Higher schools</b>			
Technical fields	n/a	50	16
Economic fields	n/a	507	133
ICT fields	n/a	n/a	n/a
<b>Universities</b>			
Technical fields	2	2 243	540
Economic fields	2	5 320	1 286
ICT fields	2	2 552	480

Source: Institute for Information on Education



LABOUR OFFICE				
City	Address	Phone	Fax	E-mail
Kroměříž	Erbenovo nábřeží 4251/2c, 767 01 Kroměříž 1	573 311 111	573 311 700	posta.up@km.mpsv.cz
Uherské Hradiště	Na Morávce 1215, 686 52 Uherské Hradiště 1	572 520 211	572 552 227	posta@uh.mpsv.cz
Vsetín	Pod Žamboškou 1024, 755 01 Vsetín 1	950 173 111	571 417 509	posta.up@vs.mpsv.cz
Zlín	Číperova 5182, 760 01 Zlín 1	577 577 111	577 432 318	posta.up@zl.mpsv.cz

Source: Ministry of Labour and Social Affairs

SELECTED CZECHINVEST PROJECTS IN THE REGION					
Name	Location	Investor	Country	Sector	Year
CIE Metal CZ, s.r.o.	Valašské Meziříčí	CIE Berriz	Spain	metal products	2005
CIE Chequia, s.r.o.	Valašské Meziříčí	CIE Automotive	Spain	manufacture of motor vehicles	2003
Continental výroba pneumatik, s.r.o.	Otrokovice	Continental AG	Germany	other	1999
Evektor, s.r.o.	n.s.	Evektor, s.r.o.	Czech Republic	manufacture of motor vehicles	2008
Fatra, a.s.	Napajedla	Fatra, a.s.	Czech Republic	plastics, rubber	2007
Indet Safety Systems a.s.	Vsetín	Nippon Kayaku	Japan	manufacture of motor vehicles	2006
Invos, spol. s r.o.	Svárov	Invos	Czech Republic/Canada	plastics, rubber	2001
Kovovýroba Hoffmann s.r.o.	Ostrožská Nová Ves	Kovovýroba Hoffmann	Czech Republic	engineering	2007
Kraft Foods CR s.r.o.	Valašské Meziříčí	Kraft Foods	USA	food processing	2004
Meister Moravia s.r.o.	Uherské Hradiště	Meister	Belgium	manufacture of motor vehicles	2003
Mitas a.s	Zlín	Mitas	Czech Republic	manufacture of motor vehicles	1999
Nippon Kayaku CZ, s.r.o.	Jablůnka	Nippon Kayaku	Japan	manufacture of motor vehicles	2006
ON Semiconductor CHC, s.r.o.	Rožnov pod Radhoštěm	ON Semiconductor	USA	electronics, electrotechnics	2004
Schott Solar CR s.r.o.	Valašské Meziříčí	RWE Schott Solar	Germany	other	2004
Trustfin - Vanguard a.s.	Vsetín	Trustfin-Vanguard	Czech Republic/USA	engineering	2000
Zlín Precision s.r.o.	Zlín	Andreas Quellmalz	United Kingdom	manufacture of motor vehicles	2001

Source: CzechInvest

KNOWLEDGE OF FOREIGN LANGUAGES			
LANGUAGE	ALL SKILLS LEVEL (%)	LANGUAGE	ALL SKILLS LEVEL (%)
English	63.1	Spanish	4.6
German	50.8	Polish	12.3
French	14.6	Russian	44.6
Italian	6.9	Nordic languages	0.8

Source: Augur Consulting

LIST OF UNIVERSITIES 2009				
Name of school	WWW	Orientation	Titles awarded	Students
Evropský polytechnický institut	www.edukomplex.cz	Management and marketing of foreign trade, information in economics, computer science, finance and tax	Bc.	1 211
Univerzita Tomáše Bati ve Zlíně	www.utb.cz	Technology, management, economics, multimedia communications, applied informatics, humanities	Bc., BcA, Ph.D., Ing., Mgr.	12 205

Source: Institute for Information on Education

RENTS IN INDUSTRIAL PREMISES IN CR REGIONS (EUR/sqm/month)	
Zlín Region	3,75-4,25
Note 1: Net effective rents for units ca 4,000 sq m which is average deal size in the market	
Note 2: Premises are immediately available only some regions.	



PRIME RENTS IN SHOPPING CENTRES (EUR/sqm/month)	
Zlín Region	30-40
Note: for units ca 100 sqm.	



Source: CB Richard Ellis

Source: CB Richard Ellis

SELECTED INDUSTRIAL ZONES IN THE ZLÍN REGION	
Industrial zone	Area (ha)
Nivnice - Kluka	10,53
Otrokovice - Toma	14,00
Strategická průmyslová zóna Holešov	360,00
Špilov Staré Město	20,00
Valašské Meziříčí - Lešná	53,90
Vsetín - Bobrky	24,99
Zašová	23,75
Zlín - Východ	23,50

Source: CzechInvest

IMPORTANT COMPANIES IN THE DISTRICT ACCORDING TO TURNOVER					
Name of company	Location	Employees	Activity (Sector)	Turnover	www
Barum Continental, s.r.o.	Otrokovice	4000 - 4999	Manufacture of rubber tyres and tubes	50 110	www.contitrade.cz
Deza, a.s.	Valašské Meziříčí - Krásno nad Bečvou	1000 - 1499	Manufacture of other organic basic chemicals	9 854	www.deza.cz
Continental HT Tyres, s.r.o.	Otrokovice	250 - 499	Manufacture of rubber tyres and tubes	7 637	www.conti-online.com
HP Tronic Zlín, s.r.o.	Zlín - Prštné	250 - 499	Wholesale of electrical household appliances and radio and television goods	5 159	www.hptronic.cz
Hamé, a.s.	Kunovice	500 - 999	Production of meat and poultrymeat products	4 803	www.hame.cz
SWS, a.s.	Slušovice	100 - 199	Wholesale of computers, computer peripheral equipment and software	4 749	www.ingram.cz
Fatra, a.s.	Napajedla		Manufacture of plastic products	3 901	www.fatra.cz
PSG - International, a.s.	Zlín	100 - 199	Architectural and engineering services (incl. design)	3 677	www.psg.cz
Rajt, s.r.o.	Valašské Meziříčí	1 - 5	Other retail sale of new goods in specialized stores	3 635	
Schott Solar CR, s.r.o.	Valašské Meziříčí - Krásno nad Bečvou	100 - 199	Manufacture of electronic valves and tubes and other electronic components	3 085	www.schott.com/solar
Baťa, a.s.	Zlín	1500 - 1999	Retail sale of footwear and leather goods	3 060	www.bata.cz
World Servis, a.s.	Zlín - areál Svit	1 - 5	Wholesale of solid, liquid and gaseous fuels and related products	2 756	
Navos, a.s.	Kroměříž	100 - 199	Manufacture of prepared animal feeds	2 680	www.navos-km.cz
Allwood, a.s.	Zlín	250 - 499	Sawmilling and planing of wood; impregnation of wood	2 476	www.allwood.cz
CS Cabot, s.r.o.	Valašské Meziříčí - Krásno nad Bečvou	100 - 199	Manufacture of other inorganic basic chemicals	2 381	www.cabot.cz
Tajmac - ZPS, a.s.	Zlín - Malenovice	1000 - 1499	Manufacture of other metalworking machine tools	2 268	www.tajmac-zps.cz
greiner packaging služovice, s.r.o.	Slušovice	250 - 499	Manufacture of plastic packing goods	2 208	www.greiner-gpi.com
Lukrom, s.r.o.	Lípa	200 - 249	Wholesale of grain, seeds and animal feeds	2 189	www.lukrom.cz
Euronics ČR, a.s.	Zlín - Prštné	6 - 9	Wholesale of electrical household appliances and radio and television goods	2 142	www.euronics.cz
Slovácké strojírný, a.s.	Uherský Brod	500 - 999	Manufacture of lifting and handling equipment	1 868	www.sub.cz

Source: Albertina Company Monitor

## IMPORTANT CONTACTS IN THE REGION

### Regional Council

Třída Tomáše Bati 3792, 761 90 Zlín  
tel.: 577 043 111  
fax: 577 043 202  
Email: podatelna@kr-zlinsky.cz  
URL: www.kr-zlinsky.cz

### Town Hall – Zlín

náměstí Míru 12, 761 40 Zlín  
tel.: 577 630 111  
fax: 577 432 901  
URL: www.zlin.eu

### CzechInvest - Regional Office

Vavrečkova 5262, 23. budova areálu Svit,  
761 01 Zlín  
tel.: 573 776 260  
fax: 573 776 265  
Email: zlin@czechinvest.org  
Contact persons: Ing. Mariana Samsonková,  
Ing. Jakub Novák

### Regional Development Agency

Vavrečkova 5262, 760 01 Zlín  
tel.: 573 776 201  
Email: rrvam@rra-vychodnimorava.cz  
URL: www.rra-vychodnimorava.cz

### Regional Development Agency

- Bílé Karpaty, o.p.s.  
Žitková 51, 687 74 Žitková  
tel.: 603 530 615  
Email: Pavel.Kuca@volny.cz  
URL: www.CR-SR.cz

### Regional Consulting & Information Center

- JVM-RPIC, spol. s.r.o.  
Štefánikova 167, 760 30 Zlín  
tel.: 577 210 729, 725 768 494  
fax: 576 011 457  
Email: rpiczlin@jvmrpic.cz  
URL: www.jvmrpic.cz

### CzechTrade - Regional Information Center - Zlín

Štefánikova 167, 760 30 Zlín  
tel./fax: 576 011 541  
Email: lenka.svrčinova@czechtrade.cz  
URL: www.khczlin.cz  
Contact person: Ing. Lenka Svrcinová

### Commercial and Economic Chamber in Zlín

Vavrečkova 5262, 760 30 Zlín  
tel.: 573 776 001  
fax: 573 776 003  
Email: info@ohkzlin.cz  
URL: www.ohkzlin.cz

## UTILITIES

### GAS

Jihomoravská plynárenská, a.s.  
for South-Western part of the region  
Plynárenská 499/1, 657 02 Brno  
tel.: +420 545 579 566  
fax: +420 545 243 722  
Email: info@rwe-jmpnet.cz  
URL: www.rwe-jmpnet.cz

Severomoravská plynárenská, a.s.  
for North-Eastern part of the region  
Plynárna 420/3, 702 72 Ostrava – Moravská Ostrava  
tel.: +420 595 142 901  
fax: +420 595 142 909  
Email: info@rwe-smpnet.cz  
URL: www.rwe-smp.cz

### ELECTRICITY

E.ON Česká republika, a.s.  
for South-Western part of the region  
Lidická 36, 659 44 Brno  
tel.: +420 840 111 333  
fax: +420 545 142 584  
Email: info@eon.cz  
URL: www.eon.cz

### ČEZ Energetické služby s.r.o.

Výstavní 1144/103, 703 00 Ostrava-Vitkovice  
tel.: +420 591 110 201  
fax: +420 591 110 202  
Email: cez@cez.cz  
URL: www.cez.cz

### WATER AND SEWER SYSTEM

Slovácké vodárny a kanalizace, a.s.  
Za Olšávkou 290, 686 36 Uherské Hradiště  
tel.: +420 572 530 111  
fax: +420 572 551 118  
Email: svkuh@svkuh.cz  
URL: www.svkuh.cz

### Vodovody a kanalizace Zlín, a.s.

ř. Tomáše Bati 383, 760 49 Zlín  
tel.: +420 577 124 111  
fax: +420 577 124 264  
Email: vakzlin@vakzlin.cz  
URL: www.vakzlin.cz

### Vodovody a kanalizace Kroměříž, a.s.

Kojetínská 3666, 767 11 Kroměříž  
tel.: +420 573 331 271  
URL: www.vak-km.cz

### Vodovody a kanalizace Vsetín, a.s.

Jasenická 1106, 755 11 Vsetín  
tel.: +420 571 484 011  
fax: +420 571 431 910  
Email: vakvs@vakvs.cz  
URL: www.vakvs.cz

### HEAT

SATE Hulín, s.r.o.  
Družba 1198, 768 24 Hulín  
tel./fax: +420 573 350 167  
Email: sate.hulin@quick.cz

### CTZ, s.r.o.

Sokolovská 572, 686 01 Uherské Hradiště  
tel.: +420 572 552 917  
Email: ctz@ctz.mvv.cz  
URL: www.ctz.mvv.cz

### Teplárna Otrokovice, a.s.

Objezdná 1777, 765 39 Otrokovice  
tel.: +420 577 649 111  
fax: +420 577 921 600  
Email: info@tot.cz  
URL: www.tot.cz

### Teplota Zlín, a.s.

Družstevní 4651, 760 05 Zlín  
tel.: +420 577 001 116  
fax: +420 577 242 585  
Email: teplozlin@volny.cz

### Zásobování teplem Vsetín, a.s.

Jiráskova 1326, 755 01 Vsetín  
tel.: +420 571 815 111  
fax: +420 571 431 405  
Email: info@vsteplo.mvv.cz  
URL: www.vsteplo.cz

# DISTRICT KROMĚŘÍŽ



## BASIC DATA

Land Area	799 km <sup>2</sup>
-----------	---------------------

## TOWNS WITH POPULATION OVER 5,000

Kroměříž	29,036	Hulín	7,310
Holešov	12,248	Chropyně	5,138
Bystřice pod Hostýnem	8,694		

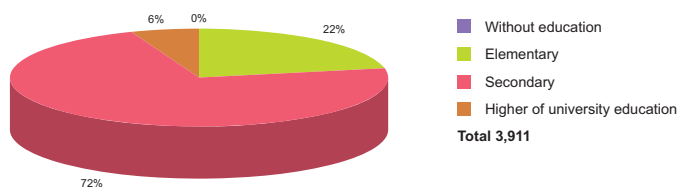
Source: Czech Statistical Office

## ACTUAL SITUATION ON LABOUR MARKET

Population	107,903
Percentage in the total population of Czech Republic (%)	18.2
Population density (person/km <sup>2</sup> )	135.0
Workforce	54,713
Number of job seekers	5,267
Unemployment rate (%)	9.3

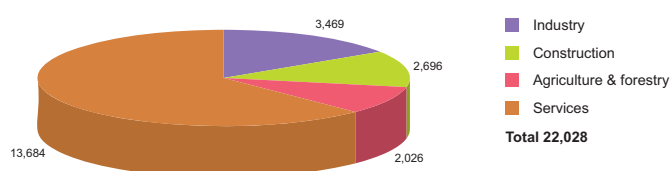
Source: Czech Statistical Office, Ministry of Labour and Social Affairs

## NUMBER OF JOB SEEKERS ACCORDING TO EDUCATION



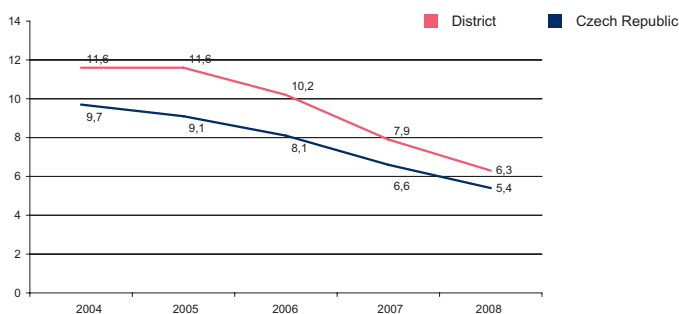
Source: Ministry of Labour and Social Affairs

## NUMBER OF ECONOMIC UNITS ACCORDING TO PREVAILING ACTIVITY



Source: Czech Statistical Office

## UNEMPLOYMENT - 5 YEAR TREND (%/YEAR)



Source: Czech Statistical Office

## FOREIGN DIRECT INVESTMENT

	FDI (CZK)	FDI (EUR)
Kroměříž	956 316	35 925
CR (total)	2 032 111 185	76 337 761
Prague	1 049 062 899	39 408 824
Zlín Average	9 210 644	346 005

Source: Czech National Bank

## IMPORTANT COMPANIES IN THE DISTRICT ACCORDING TO TURNOVER

Name of company	Location	Employees	Activity (Sector)	Turnover	www
Navos, a.s.	Kroměříž	100 - 199	Manufacture of prepared animal feeds	2 680	www.navos-km.cz
Saker, s.r.o.	Kroměříž	50 - 99	Wholesale of waste and scrap	1500 mil. and more	www.saker.cz
Rosa market, s.r.o.	Kroměříž	500 - 999	Non-specialized wholesale of food, beverages and tobacco	1500 mil. and more	www.rosamarket.cz
Magneton, a.s.	Kroměříž	500 - 999	Manufacture of electrical equipment for engines and vehicles n.e.c.	1 129	www.magneton.cz
TON, a.s.	Bystřice pod Hostýnem	1500 - 1999	Manufacture of chairs and seats	1 021	www.ton.cz
Mandák, a.s.	Kroměříž	100 - 199	General construction of buildings and civil engineering works	1000 - 1499 mil.	www.mandak.cz
Toshulin, a.s.	Hulín	250 - 499	Manufacture of other metalworking machine tools	908	www.toshulin.cz
Plastika, a.s.	Kroměříž	250 - 499	Manufacture of other plastic products	814	www.plastika.cz
Lukrom Zlín, a.s.	Kroměříž	50 - 99	Wholesale of agricultural machinery and accessories and implements, tractors	749	www.lukrom.cz
NET Plasy, s.r.o.	Bystřice pod Hostýnem	100 - 199	Operation of dairies and cheese making	644	www.mlekama-bystrice.cz
Rovina, a.s.	Hulín		Growing of crops combined with farming of animals (mixed farming)	599	www.rovina.cz
Kmotr - Masna Kroměříž, a.s.	Kroměříž	100 - 199	Production of meat and poultrymeat products	595	www.masna.cz
Pilana Tools, a.s.	Hulín	50 - 99	Other wholesale	594	www.pilanaools.cz
AM EURoL Group, s.r.o.	Kroměříž	1 - 5	Retail sale of automotive fuel	590	
Chropynská strojírna, a.s.	Chropyně	200 - 249	Manufacture of other special purpose machinery n.e.c.	548	www.chropynska.cz
VW Wachal, a.s.	Kroměříž	100 - 199	Housing construction	500 - 999 mil.	www.wachal.cz
NWT Computer, s.r.o.	Hulín	100 - 199	Wholesale of computers, computer peripheral equipment and software	500 - 999 mil.	www.nwt.cz
Koryna nábytek, a.s.	Koryčany	250 - 499	Manufacture of other kitchen furniture	500 - 999 mil.	www.koryna.cz
Jacom, s.r.o.	Holešov	100 - 199	Production and preserving of meat	575	www.jacom.cz

# DISTRICT UHERSKÉ HRADIŠTĚ



## BASIC DATA

Land Area	991 km <sup>2</sup>
-----------	---------------------

## TOWNS WITH POPULATION OVER 5,000

Uherské Hradiště	25,865	Staré Město	6,809
Uherský Brod	17,308	Kunovice	5,423

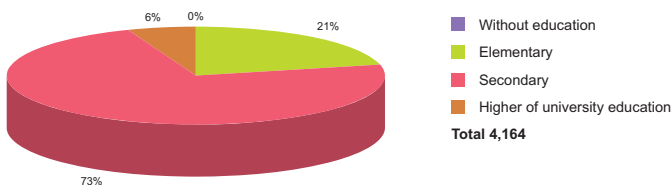
Source: Czech Statistical Office

## ACTUAL SITUATION ON LABOUR MARKET

Population	144,515
Percentage in the total population of Czech Republic (%)	24.4
Population density (person/km <sup>2</sup> )	145.8
Workforce	75,272
Number of job seekers	6,047
Unemployment rate (%)	7.8

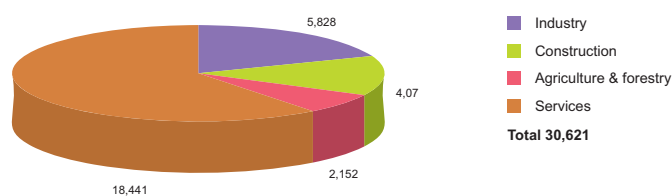
Source: Czech Statistical Office, Ministry of Labour and Social Affairs

## NUMBER OF JOB SEEKERS ACCORDING TO EDUCATION



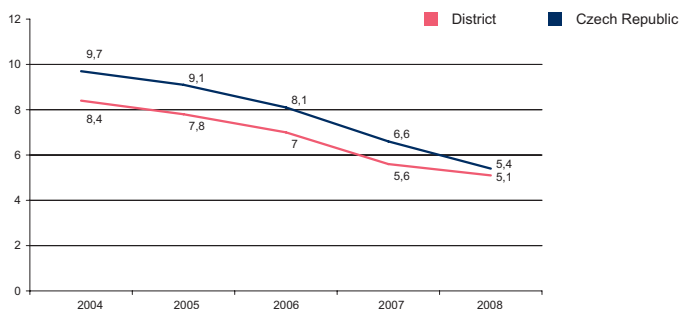
Source: Ministry of Labour and Social Affairs

## NUMBER OF ECONOMIC UNITS ACCORDING TO PREVAILING ACTIVITY



Source: Czech Statistical Office

## UNEMPLOYMENT - 5 YEAR TREND (%/YEAR)



Source: Czech Statistical Office

## FOREIGN DIRECT INVESTMENT

	FDI (CZK)	FDI (EUR)
Uherské Hradiště	1 958 246	73 563
CR (total)	2 032 111 185	76 337 761
Prague	1 049 062 899	39 408 824
Zlín Average	9 210 644	346 005

Source: Czech National Bank

## IMPORTANT COMPANIES IN THE DISTRICT ACCORDING TO TURNOVER

Name of company	Location	Employees	Activity (Sector)	Turnover	www
Hamé, a.s.	Kunovice	500 - 999	Production of meat and poultrymeat products	4 803	www.hame.cz
Slovácké strojírny, a.s.	Uherský Brod	500 - 999	Manufacture of lifting and handling equipment	1868	www.sub.cz
Inpost, s.r.o.	Uherské Hradiště	250 - 499	Retail sale of meat and meat products	1619	www.inpost.cz
Ferromoravia, s.r.o.	Staré Město	200 - 249	Cold drawing	1413	www.ferromoravia.cz
Zedníček, a.s.	Kunovice	100 - 199	Wholesale of meat and meat products	1 386	www.zednicek.cz
Moravia Cans, a.s.	Bojkovice	250 - 499	Manufacture of light metal packaging	1 354	www.moraviacans.cz
Linea Nivnice, a.s.	Nivnice	250 - 499	Production of mineral waters and soft drinks	1159	www.linea.nivnice.cz
Synot W, a.s.	Uherské Hradiště - Mařatice	100 - 199	Other entertainment activities n.e.c.	1 123	www.synot.cz
Žpsv, a.s.	Uherský Ostroh	500 - 999	Manufacture of concrete products for construction purposes	1000 - 1499 mil.	www.zpsv.cz
Tradix UH, a.s.	Staré Město	50 - 99	General construction of buildings and civil engineering works	1000 - 1499 mil.	www.tradix.cz
Kovář plus, s.r.o.	Podolí	20 - 24	Wholesale of meat and meat products	1000 - 1499 mil.	www.kovarplus.cz
Česká zbrojovka, a.s.	Uherský Brod	1000 - 1499	Manufacture of weapons and ammunition	1000 - 1499 mil.	www.czub.cz
LET, a.s.	Kunovice		Manufacture of aircraft and spacecraft	766	www.let.cz
Jednota spotřební družstvo v Uherském	Uherský Ostroh - Ostrožské Předměstí	250 - 499	Retail sale in non-specialized stores with food, beverages or tobacco	728	
Tekoo, s.r.o.	Uherský Brod	100 - 199	Wholesale of fruit and vegetables	715	www.tekoo.cz
Zeveta Machinery, a.s.	Bojkovice	500 - 999	General mechanical engineering	700	www.zeveta.cz
Zevos, a.s.	Uherské Hradiště	200 - 249	Growing of crops combined with farming of animals (mixed farming)	557	www.zevos.cz
Colorlak, a.s.	Staré Město		Manufacture of paints, varnishes and similar coatings, printing ink and mastics	528	www.colorlak.cz
Synot Lotto, a.s.	Uherské Hradiště - Mařatice		Gambling and betting activities	500 - 999 mil.	synotlotto.synotloterie.cz
Lumír Kreisl - Hokr	Uherský Brod	25 - 49	Printing and service activities related to printing	500 - 999 mil.	

# DISTRICT VSETÍN



## BASIC DATA

Land Area	1,143 km <sup>2</sup>
-----------	-----------------------

## TOWNS WITH POPULATION OVER 5,000

Vsetín	27,963	Rožnov pod Radhoštěm	17,072
Valašské Meziříčí	27,336	Zubří	5,487

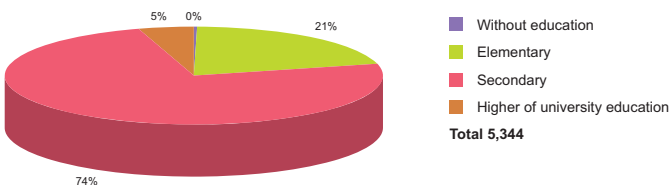
Source: Czech Statistical Office

## ACTUAL SITUATION ON LABOUR MARKET

Population	145,839
Percentage in the total population of Czech Republic (%)	24.7
Population density (person/km <sup>2</sup> )	127.6
Workforce	75,424
Number of job seekers	7,844
Unemployment rate (%)	10.1

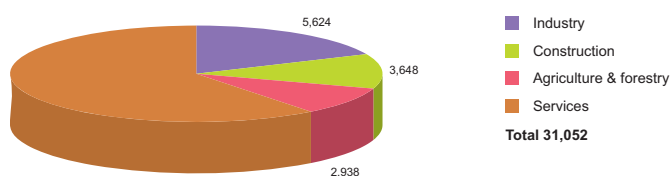
Source: Czech Statistical Office, Ministry of Labour and Social Affairs

## NUMBER OF JOB SEEKERS ACCORDING TO EDUCATION



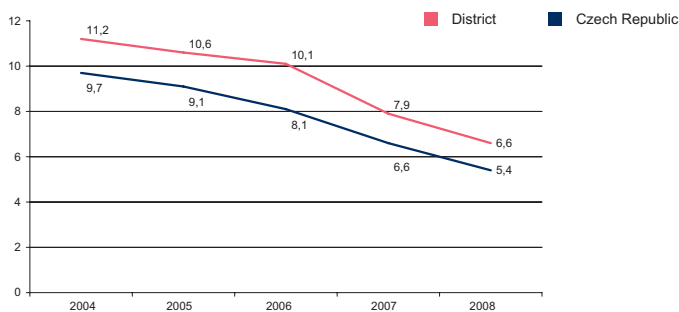
Source: Ministry of Labour and Social Affairs

## NUMBER OF ECONOMIC UNITS ACCORDING TO PREVAILING ACTIVITY



Source: Czech Statistical Office

## UNEMPLOYMENT - 5 YEAR TREND (%/YEAR)



Source: Czech Statistical Office

## FOREIGN DIRECT INVESTMENT

	FDI (CZK)	FDI (EUR)
Vsetín	7 207 127	270 741
CR (total)	2 032 111 185	76 337 761
Prague	1 049 062 899	39 408 824
Zlín Average	9 210 644	346 005

Source: Czech National Bank

## IMPORTANT COMPANIES IN THE DISTRICT ACCORDING TO TURNOVER

Name of company	Location	Employees	Activity (Sector)	Turnover	www
Deza, a.s.	Val. Meziříčí - Krásno nad Bečvou	1000 - 1499	Manufacture of other organic basic chemicals	9 854	www.deza.cz
Rajt, s.r.o.	Valašské Meziříčí	1 - 5	Other retail sale of new goods in specialized stores	3 635	
Schott Solar CR, s.r.o.	Val. Meziříčí - Krásno nad Bečvou	100 - 199	Manufacture of electronic valves and tubes and other electronic components	3 085	www.schott.com/solar
CS Cabot, s.r.o.	Val. Meziříčí - Krásno nad Bečvou	100 - 199	Manufacture of other inorganic basic chemicals	2 381	www.cabot.cz
VA & JA Tabák, s.r.o.	Dolní Bečva	100 - 199	Wholesale of tobacco products	1 549	www.vajatabak.cz
Woco STV, s.r.o.	Vsetín	500 - 999	Manufacture of parts and accessories for motor vehicles and their engines	1500 mil. and more	www.woco.de
ON Semiconductor Czech Republic, s.r.o.,	Rožnov pod Radhoštěm	1000 - 1499	Manufacture of electronic valves and tubes and other electronic components	1500 mil. and more	www.onsemi.cz
Indet Safety Systems, a.s.	Vsetín	250 - 499	Manufacture of explosives	1 566	www.iss-cz.com
Alpine stavební společnost CZ, s.r.o.	Val. Meziříčí - Krásno nad Bečvou		Construction of motorways, roads, airfields and sport facilities	1 464	www.alpine.cz
MP Krásno, a.s.	Val. Meziříčí - Krásno nad Bečvou	500 - 999	Production of meat and poultrymeat products	1 450	www.krasno.cz
TES Vsetín, s.r.o.	Vsetín	500 - 999	Manufacture of electric motors, generators and transformers	1 228	www.les.cz
CIE Metal CZ, s.r.o.	Val. Meziříčí - Krásno nad Bečvou		Manufacture of locks and hinges	1 140	
Robe show lighting s.r.o.	Rožnov pod Radhoštěm	250 - 499	Manufacture of lighting equipment and electric lamps	1000 - 1499 mil.	www.robe.cz
Anvis AVT, s.r.o.	Vsetín	200 - 249	Retreading and rebuilding of rubber tyres	1000 - 1499 mil.	www.woco.de
Karel Peltsarský - Fa Stín	Vsetín	500 - 999	Manufacture of other fabricated metal products n.e.c.	981	www.stin.cz
Gumáry Zubří, a.s.	Zubří		Manufacture of other rubber products	910	www.guzu.cz
Hirschmann Czech, s.r.o.	Vsetín	250 - 499	Manufacture of parts and accessories for motor vehicles and their engines	897	www.hirschmann.cz
Unitools Press CZ, a.s.	Val. Meziříčí - Krásno nad Bečvou	200 - 249	Forging, pressing, stamping and roll forming of metal; powder metallurgy	888	www.cieautomotive.cz
M & v, s.r.o.	Vsetín	100 - 199	Wholesale of hardware, plumbing and heating equipment and supplies	878	www.mav.cz
TCT, a.s.	Vidče	0	Manufacture of electronic valves and tubes and other electronic components	830	



# DISTRICT ZLÍN

## BASIC DATA

Land Area	1,030 km <sup>2</sup>
-----------	-----------------------

## TOWNS WITH POPULATION OVER 5,000

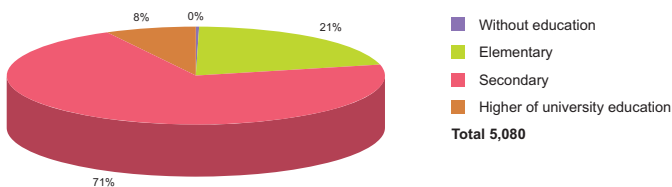
Zlín	78,066	Brumov-Bylnice	5,913
Otrokovice	18,545	Luhačovice	5,399
Napajedla	7,512	Valašské Klobouky	5,159
Slavičín	6,922		

## ACTUAL SITUATION ON LABOUR MARKET

Population	193,101
Percentage in the total population of Czech Republic (%)	32.7
Population density (person/km <sup>2</sup> )	187.5
Workforce	101,933
Number of job seekers	7,446
Unemployment rate (%)	7.2

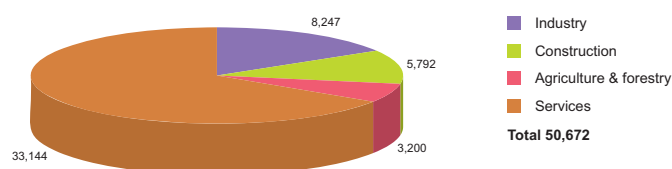
Source: Czech Statistical Office, Ministry of Labour and Social Affairs

## NUMBER OF JOB SEEKERS ACCORDING TO EDUCATION



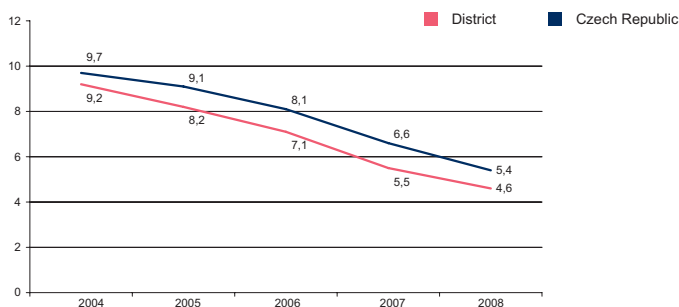
Source: Ministry of Labour and Social Affairs

## NUMBER OF ECONOMIC UNITS ACCORDING TO PREVAILING ACTIVITY



Source: Czech Statistical Office

## UNEMPLOYMENT - 5 YEAR TREND (%/YEAR)



Source: Czech Statistical Office

## FOREIGN DIRECT INVESTMENT

	FDI (CZK)	FDI (EUR)
Zlín	26 720 886	1 003 790
CR (total)	2 032 111 185	76 337 761
Prague	1 049 062 899	39 408 824
Zlín Average	9 210 644	346 005

Source: Czech National Bank

## IMPORTANT COMPANIES IN THE DISTRICT ACCORDING TO TURNOVER

Name of company	Location	Employees	Activity (Sector)	Turnover	www
Barum Continental, s.r.o.	Otrokovice	4000 - 4999	Manufacture of rubber tyres and tubes	50 110	www.contitrade.cz
Continental HT Tyres, s.r.o.	Otrokovice	250 - 499	Manufacture of rubber tyres and tubes	7 637	www.conti-online.com
HP Tronic Zlín, s.r.o.	Zlín - Prště	250 - 499	Wholesale of electrical household appliances and radio and television goods	5 159	www.hptronic.cz
SWS, a.s.	Slušovice	100 - 199	Wholesale of computers, computer peripheral equipment and software	4 749	www.sws.cz
Fatra, a.s.	Napajedla		Manufacture of plastic products	3 901	www.fatra.cz
PSG - International, a.s.	Zlín	100 - 199	Architectural and engineering services (incl. design)	3677	www.psg.cz
Bata, a.s.	Zlín	1500 - 1999	Retail sale of footwear and leather goods	3060	www.bata.cz
World Servis, a.s.	Zlín - areál Svit	1 - 5	Wholesale of solid, liquid and gaseous fuels and related products	2 756	
Allwood, a.s.	Zlín	250 - 499	Sawmilling and planing of wood; impregnation of wood	2 476	www.allwood.cz
Tajmac - ZPS, a.s.	Zlín - Malenovice	1000 - 1499	Manufacture of other metalworking machine tools	2 268	www.tajmac-zps.cz
greiner packaging slušovice, s.r.o.	Slušovice	250 - 499	Manufacture of plastic packing goods	2 208	www.greiner-gpi.com
Lukrom, s.r.o.	Lípa	200 - 249	Wholesale of grain, seeds and animal feeds	2 189	www.lukrom.cz
Euronics ČR, a.s.	Zlín - Prště	6 - 9	Wholesale of electrical household appliances and radio and television goods	2142	www.euronics.cz
Gaston, s.r.o.	Zlín	25 - 49	Wholesale of fruit and vegetables	1558	www.gaston.cz
GIENGER spol. s r.o.	Zlín - Píluky	200 - 249	Wholesale of hardware, plumbing and heating equipment and supplies	1 540	www.gienger.cz
OB Product, a.s.	Neubuz	1 - 5	Wholesale of solid, liquid and gaseous fuels and related products	1500 mil. and more	
Konty G Trade, a.s.	Zlín	250 - 499	Other wholesale	1500 mil. and more	
Hesco, s.r.o.	Otrokovice	100 - 199	Wholesale of metals and metal ores	1500 mil. and more	www.hesco.cz
Continental výroba pneumatik, s.r.o.	Otrokovice	200 - 249	Manufacture of rubber tyres and tubes	1500 mil. and more	www.barum.cz
CE Wood, a.s.	Zlín	1000 - 1499	Forestry and logging	1500 mil. and more	www.lesy.cz