

# IT & Software Development

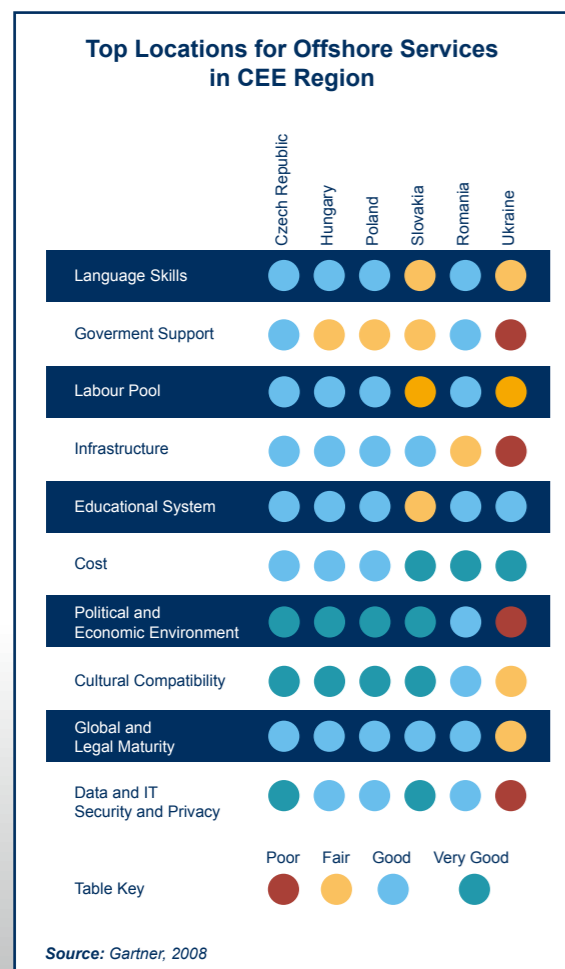
**“Based on my experience working with international teams from China to the Bay Area I can say that Czech software engineers are as good as their western counterparts, regardless of whether we look at innovation, efficiency, discipline or experience, and they usually work harder.**

The roots of this healthy environment lie in the Czech Republic’s high-quality education system, which provides the heterogeneous skill sets of the country’s software engineers.”

*Radovan Janeček, VP,  
Software Engineering at CA*

## REASONS TO INVEST IN THE CZECH REPUBLIC

- Location in the centre of Europe, gateway to both eastern and western markets, less than two hours by air from most European destinations
- Very good education system which serves as a base for future skills development and produces a very capable workforce and an advanced industry
- High degree of attractiveness of the segment for investors (ranked first in 2008 among sectors most often receiving investments in the Czech Republic), presence of foreign capital in the segment
- Creative, innovative, experienced, flexible professionals at a "fraction of the cost" of those in western economies
- High quality of life and attractive living environment



## BASIC FACTS

The Czech Republic is one of Europe's top locations for offshoring and outsourcing of IT services. Repeatedly recognized by various researchers this fact is confirmed by the strong inflow of high-added value projects of the world's top IT companies and is fueled by the country's tradition of excellence in technical fields. The list of already successful investors in the country includes Microsoft, Skype, Monster Technologies, SAP, DHL, Tieto, Hewlett-Packard, Computer Associates, Red Hat, Sun Microsystems, SolarWinds or IBM. Furthermore IT companies with Czech origins such as 2N Telecommunications, Alwil, AVG Technologies, Kerio, Y-SOFT and others start to conquer the world with their products and services. Despite being one of the most mature IT markets in the CEE region, the Czech Republic still offers plenty of growth potential.

## IF R&D IS WHAT YOU NEED

During the 1920s and 1930s, Czechoslovakia ranked among the ten most developed countries in the world and by its research, development, and science achievements the Czech Republic calls upon its own traditions. The Czech Republic is home to a number of noteworthy research institutes and universities that have achieved many results and awards in the field of Information and Communication Technologies.

### Czech Technical University, Prague

Faculty of Electrical Engineering—Department of Cybernetics is aimed at high-quality research in artificial intelligence, machine perception, robotics, and biomedical engineering with the focus to multi-agent systems, machine learning, data mining, pattern recognition, knowledge-based systems, medical data processing and collaborative robotics (Google: Image-based search, security, 3 Google awards).

Faculty of Information Technology—Research focuses on computer science, computer engineering, software engineering, information technology, neural networks.

### Charles University, Prague

Institute for Theoretical Computer Science—The subject of the centre's research activities comprises methods, algorithms, and structures of theoretical computer science and their applications in information technologies and data mining; Projects in industrial, governmental, EU programmes. International partnership with Mitsubishi Electric Research Laboratories (MERL)

### University of Economics, Prague

IT research at the Faculty of Informatics and Statistics focuses on IT Management methods and Models, Service Science, Knowledge Engineering, Information Management ISO Standards (ISO/IEC JTC1 SC7) and IT Industry Research (Statistics) – Human Resources in ICT, Impact of ICT on the Czech Republic.

### Masaryk University, Brno

Research activities are concentrated particularly on a project dealing with issues of parallel and distributed computer systems; IBM Shared University Research Award 2008 (Web-scale Similarity Search in Multimedia Data); ISA Awards 2009 (Finalists in Mission-Critical Data).

### University of Technology, Brno

The scientific and research activities at the FIT are directed towards up-to-date research areas concerning the theory, methods and applications of information technologies. Typical research areas at the FIT are the following: Applied evolutionary algorithms, Computer Architecture, Computer networks, communication protocols and embedded systems.

### Technical University of Ostrava

The R&D potential of the Faculty of Electrical Engineering and Computer Science comprises a key component of innovative activities in the Moravia-Silesia region. The university is a partner of new Centre of Excellence (IT4Innovation) focusing on the following 4 key areas of activity: Information for People, Supercomputing for Simulations, Embedded Computing for Innovations and Theory for Information Technology.

## R&D CASE STUDY

### Czech Technical University, Prague

The EU Centre of Excellence at the Department of Cybernetics of the Czech Technical University has been extensively collaborating with and received funding from the U.S. Air Force Research Laboratory for:

- Agent-based Computing in Distributed Adversarial Planning (2007–2008)
- Autonomous Agents for UAV Air-Traffic Control (2005–2007)
- Advanced Agent Methods in Adversarial Environment (2004–2005)
- Meta-reasoning and Monitoring in the Multi-Agent Systems (2002–2003)
- Agents Inaccessibility in Multi-agent Systems (2002–2004)

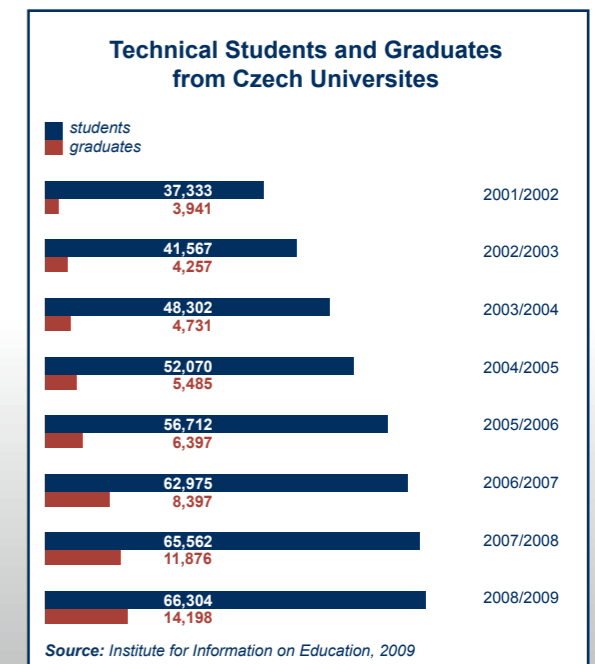
## INVESTMENT CASE STUDY

**Sun Microsystems's** Czech branch is the company's one of the largest development centres outside of the United States. This center came into being with Sun's acquisition of original Czech company Netbeans in 1999 and is engaged primarily in development of applications in the Java language and environment.

**Red Hat** has established an important facility in Brno that is a significant part of the company's worldwide engineering structure that includes software development, quality engineering and program management. The number of employees working in Brno sub branch is still growing—at the end of 2009 there were 200 IT specialists. For employees Red Hat offers education and a number of benefits which make the company attractive on employment market for many applicants.

## EDUCATION SYSTEM

The Czech Republic combines an outstanding level of general education with strong science and engineering disciplines. For generations the Czech educational system has generated high-level, technical problem-solving skills in environments where standard solutions are inadequate. An abundant supply of university graduates assures continuous enrichment of the country's available labour pool.



50s

The SAPO (short for Samočinný počítač) was the first Czechoslovak computer



70s

JSEP and SMEP – IBM and HP compatible third-generation computer



90s

Internet expansion in CR through FESNET/ CESNET



1991

AVG (Grisoft) starts operating on the Czech market



1999

The term Czech Netbeans Java development platform bought by Sun Microsystems



2000s

Entry of foreign investors into Czech firms and involvement of Czech entities in international supply chains



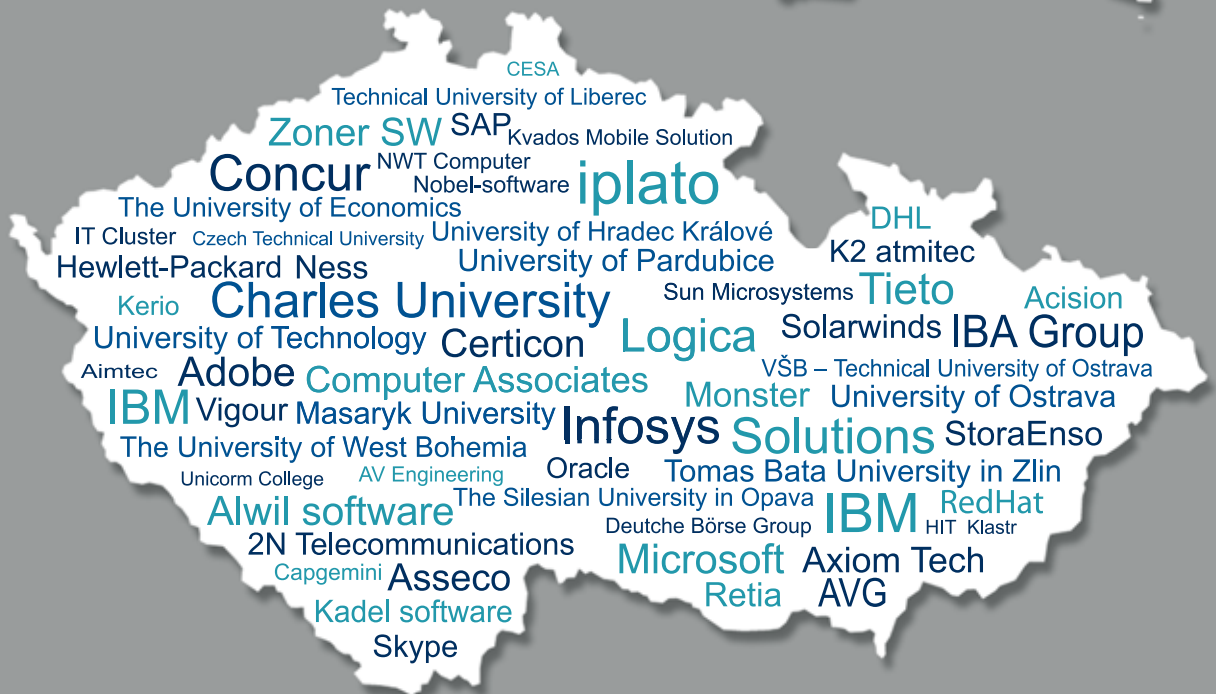
2005

CESKY TELECOM Group acquired by Telefonica



2008

IBM chose Prague as the ideal location for its CEE headquarters

IT & SOFTWARE DEVELOPMENT  
IN THE CZECH REPUBLIC

## OUTSTANDING QUALITY OF LIFE

The Czech Republic boasts extraordinary quality of life.

The IMD World Competitiveness Yearbook's Quality of Life Index ranks the country twentieth in the world and first in the CEE region. But one must experience the local cultural heritage, sport facilities and natural beauty to fully grasp the joys of living in the Czech Republic.

The country offers a full range of services that are required by expatriates and their families, including multilingual international schools covering all levels from kindergarten to MBA studies, attractive housing, shopping malls and first-class recreational facilities including over 80 golf courses and 12 UNESCO heritage sites.

CZECHINVEST'S  
HEADQUARTERS

CZECH REPUBLIC  
PHONE: +420 296 342 500  
E-MAIL: [fdi@czechinvest.org](mailto:fdi@czechinvest.org)  
WEB: [www.czechinvest.org](http://www.czechinvest.org)

DATE OF ISSUE: January 2011