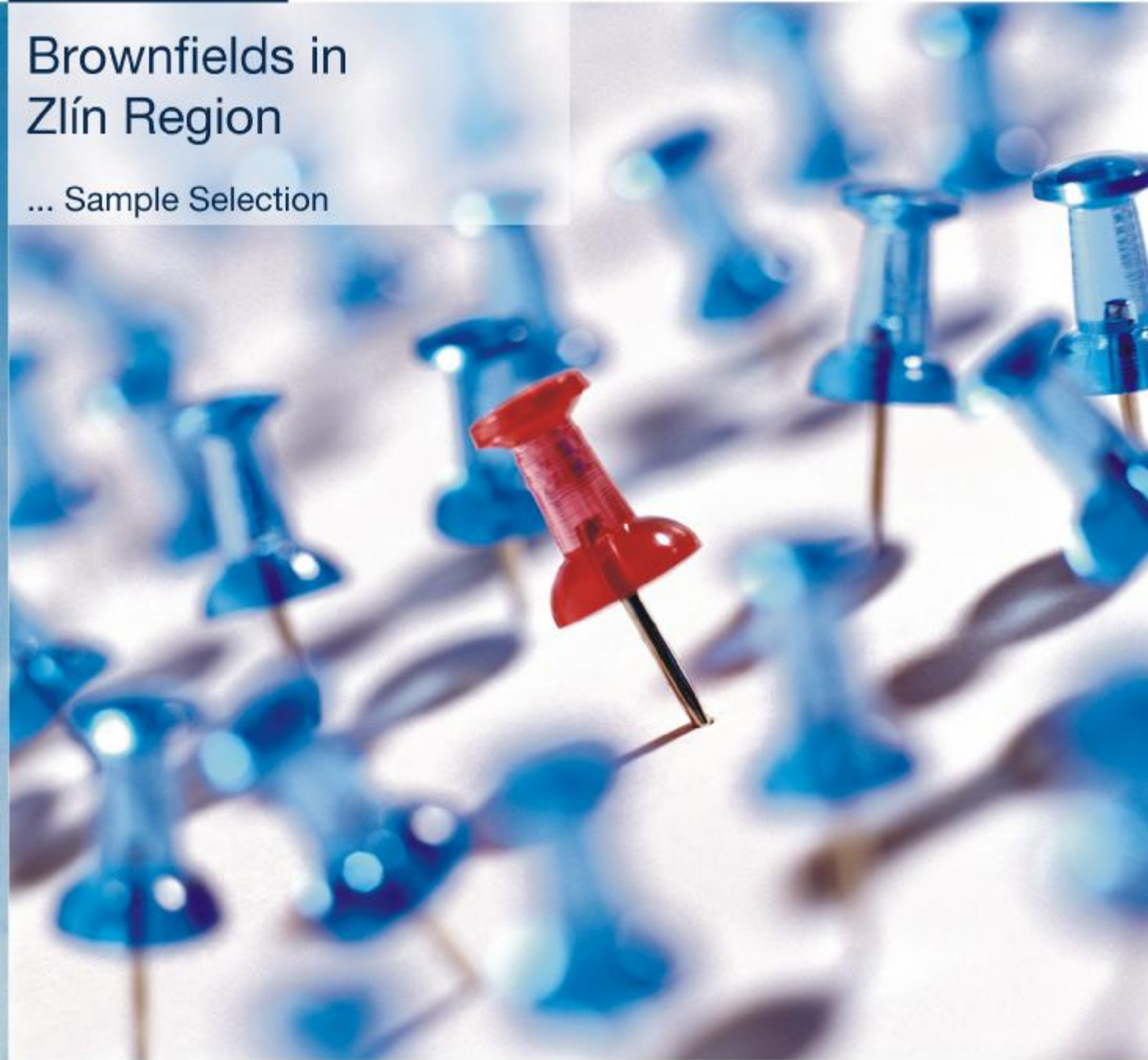


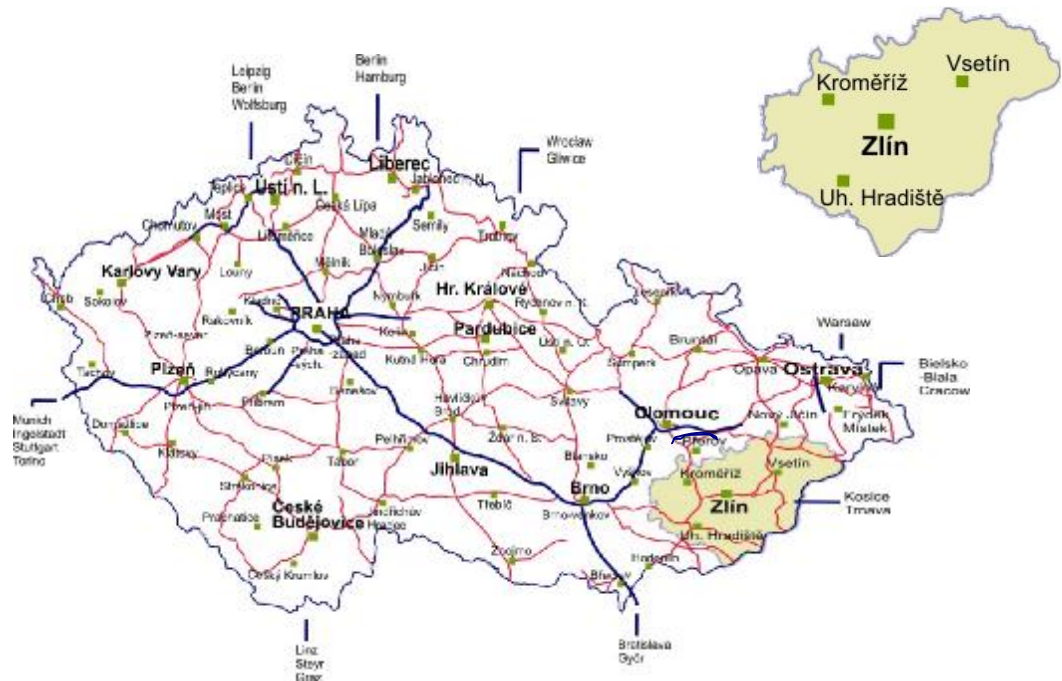
CZECH REPUBLIC

# Brownfields in Zlín Region

... Sample Selection



## Zlín Region



### Basic information

The Zlín region is located in the southeastern part of the Czech Republic. Its eastern edge forms a 120-kilometre border with Slovakia. The border with Poland and Austria is approx. only 100 km far from the Zlín region. The largest cities in the region are Zlín, Uherské Hradiště, Vsetín, Kroměříž and Valašské Meziříčí.

The current industrial potential of the region is based on the existence of the formerly crucial machinery manufacturing companies. Enterprises in the manufacturing industry, aircraft industry and particularly in the area of plastics and rubber are quite important, followed by the metallurgy and metalworking industry, electrical industry, general machinery, the chemicals industry and the food processing industry. Several industries (e.g. footwear made famous by the world-renowned shoemaker Baťa) have a long history in the Zlín region.

### General information

<b>Regional capital</b>	<b>Zlín</b>
<b>Area (in km<sup>2</sup>)</b>	3 964
<b>Total population*</b>	589 975
Zlín districts:	
• Kroměříž	107 953
• Uherské Hradiště	143 671
• Vsetín	145 761
• Zlín	192 590
<b>Population density (per km<sup>2</sup>)*</b>	<b>149</b>

Tomáš Baťa University in Zlín offers a wide range of programs, e.g. chemistry, informatics, management and economics, multimedia communications, etc.

The region is famous for its deposits of building materials, the most important of which are gravel sands. Deposits of building stone, limestone, loam and, to a lesser extent, oil and natural gas, are important as well.

\*in January – September 2006

## Macroeconomic Indicators

### Unemployment

<b>Czech Republic</b>	7.7%	<b>Zlín Districts</b>	
<b>Zlín Region</b>		Kroměříž	9.5%
• rate	7.8%	Uherské Hradiště	6.5%
• figure	25 601	Vsetín	9.7%
		Zlín	6.3%

### Gross monthly wages (in EUR\*)

(without social and health contributions of 35%)

<b>Czech Republic</b>	690 EUR
<b>Zlín Region</b>	594 EUR

Q1 – Q3 2006; Source: Ministry of Labour and Social Affairs, Czech Statistical Office

\* 1 EUR = 28,441 CZK (Q1 – Q3 2006, Czech National Bank)

## Companies in the region

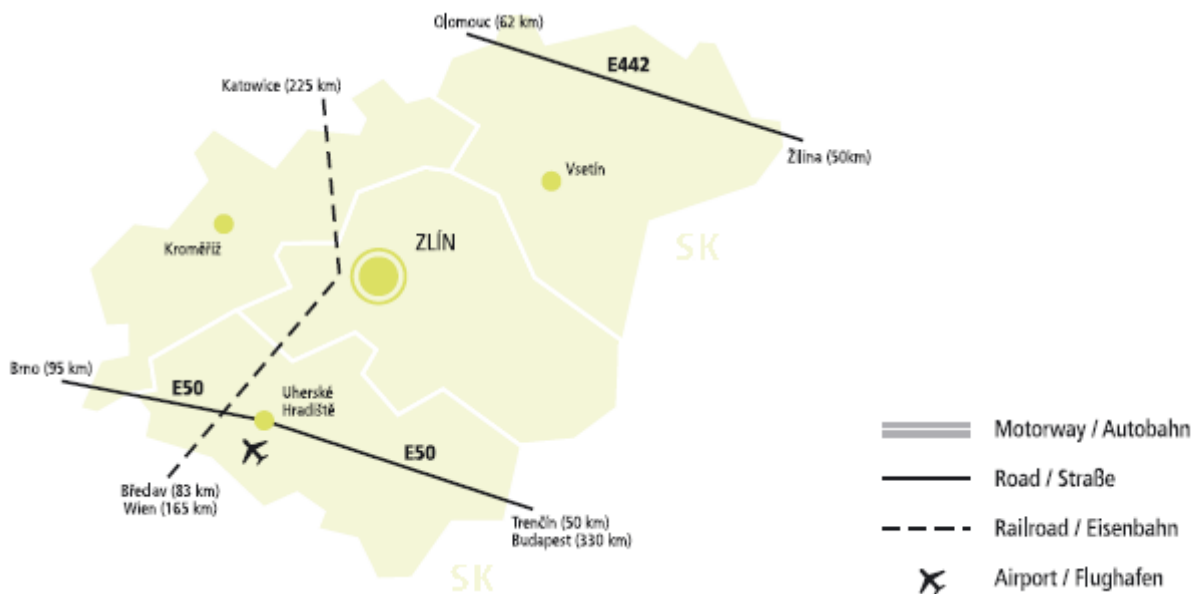
### Selected companies in the region

Name of company	Country of origin	Sector	Location	CzechInvest project
Barum Continental	Czech Republic	Rubber-making industry	Otrokovice	
Baťa	Czech Republic	Manufacture of footwear	Zlín	
Continental AG	Germany	Rubber-making industry	Otrokovice	CzechInvest project
DEZA	Czech Republic	Chemical industry	Valašské Meziříčí	
Indet Safety Systems	Japan	Automotive industry	Vsetín	CzechInvest project
Kraft Foods	USA	Food industry	Valašské Meziříčí	CzechInvest project
LappGroup	Germany	Center of services	Zlín	CzechInvest project
Mitas	Czech Republic	Automotive industry	Praha/Zlín	CzechInvest project
ON Semiconductor	USA	Electrical engineering	Rožnov pod Radhoštěm	CzechInvest project
RWE Schott Solar	Germany	Other	Valašské Meziříčí	CzechInvest project
SWS	Czech Republic	IT	Slušovice	
Tajmac – ZPS	Czech Republic	Manufacture of machine tools	Zlín	
Tescoma	Czech Republic	Other	Zlín	CzechInvest project
Trustfin – Vanguard	Czech Republic	Engineering	Vsetín	CzechInvest project

Source: CzechInvest, Dun & Bradstreet, 2006

## Transportation

The importance of the region's transport is evident in the fact that its main transport route, the so-called Pomoravský Corridor, has been included in the ten European Pan-European transport corridors that continue in the TEN network (Trans-European Networks) within the EU countries. A direct connection between the Zlín region and the D1 highway will be completed by 2007. Currently, the region is connected to the highway network by 1st-class roads. The region has three civilian airports: Kunovice, Otrokovice and Holešov. The airport in Kunovice is used for international transport from Hanover via Kunovice to Timisoara. The other nearest civilian airports for international transport are at Brno and Ostrava, less than 100 kilometres away.



Source: Ministry of Transport, [www.mdcr.cz](http://www.mdcr.cz)

## Human resources

### School system

Type of school	Number of schools	Number of students	Number of graduates
Secondary schools	95	34 968	8 618
• Technical fields	41	10 866	3 113
• Economic fields	42	9 876	2 566
• ICT fields	16	2 985	879
Higher schools	11	1 330	404
• Technical fields	1	90	14
• Economic fields	4	633	175
• ICT fields	0	0	0
Universities	4	8 580	1 559
• Technical oriented	2	2 652	350
• Economic oriented	3	3 969	935
• ICT oriented	3	1 027	168

Source: Institute for Information on Education (ÚIV)

Methodology:

Number of schools – total number of school subjects (possible duplicity in combination of some subject)

Number of students – for 2005/2006 school year (high schools, higher schools – as of 30. 9. 2005, universities – as of 31. 10. 2005)

Number of graduates – for 2004/2005 school year, all university graduates for calendar year 2005 (from 1 January 2005 – 31 December 2005)

Secondary schools – number of high schools, skilled and apprentice high schools (e. g. Vocational training centres, Secondary specialised schools, Grammar schools)

Higher professional schools (colleges)

Universities

### Representation of professional classes

Selected professional classes	Regional representation in %
Legislators, senior officials and managers	8.2
Professionals	7.4
Clerks	5.9
Service workers and shop and market sales workers	12.6
Skilled agricultural and forestry workers	1.6
Craft and related trades workers	19.9
Plant and machine operators and assemblers	17.8
Elementary occupations	6.0
Armed forces	0.2
Technicians and associate professionals	20.4
<b>of which:</b>	
• Physical and engineering science assoc. professionals	32.4
• Life science and health associate professionals	16.9
• Teaching associate professionals	7.2
• Other associate professionals	43.5

Source: ČSÚ; annual average 2005; according to CSU

## List of useful contacts

Useful contacts		
<b>Schools</b>		
<b>Universities</b>		
European Polytechnic Institute	Technical fields	<a href="http://www.vos.czepi.cz">www.vos.czepi.cz</a>
Tomáš Baťa University in Zlín	Economics, technology, communication	<a href="http://www.utb.cz">www.utb.cz</a>
<b>Utility providers</b>		
Gas	Jihomoravská plynárenská, a. s.	<a href="http://www.jmpas.cz">www.jmpas.cz</a>
	Severomoravská plynárenská, a. s.	<a href="http://www.rwe-smp.cz">www.rwe-smp.cz</a>
Electricity	E.ON Česká republika, a. s.	<a href="http://www.eon.cz">www.eon.cz</a>
	Severomoravská energetika, a. s.	<a href="http://www.sme.cz">www.sme.cz</a>
Water and sewage	Slovácké vodárny a kanalizace, a. s.	<a href="http://www.svkuh.cz">www.svkuh.cz</a>
	Vodovody a kanalizace Zlín, a. s.	<a href="http://www.vakzlin.cz">www.vakzlin.cz</a>
	Vodovody a kanalizace Kroměříž, a. s.	<a href="http://www.vak-km.cz">www.vak-km.cz</a>
	Vodovody a kanalizace Vsetín, a. s.	<a href="http://www.vakvs.cz">www.vakvs.cz</a>
Heat	BTH Slavičín, spol. s r. o.	<a href="http://www.bth-slavicin.cz">www.bth-slavicin.cz</a>
	ENERGOAQUA, a. s.	<a href="http://www.energoaqua.cz">www.energoaqua.cz</a>
	NBHT, s. r. o.	<a href="http://www.napajedla.cz/nbth">www.napajedla.cz/nbth</a>
	Teplota Zlín, a. s.	
	Teplárna Otrokovice, a. s.	<a href="http://www.tot.cz">www.tot.cz</a>
	Zásobování teplem Vsetín, a. s.	<a href="http://www.vsteplo.cz">www.vsteplo.cz</a>
<b>The City of Zlín</b>		
City Hall – Zlín		<a href="http://www.mestozlin.cz">www.mestozlin.cz</a>
Regional Council		<a href="http://www.kr-zlinsky.cz">www.kr-zlinsky.cz</a>
Chamber of Commerce of Zlín Region		<a href="http://www.ohkzlin.cz">www.ohkzlin.cz</a>

# Aggregate statistics of brownfield sites in the Zlín region

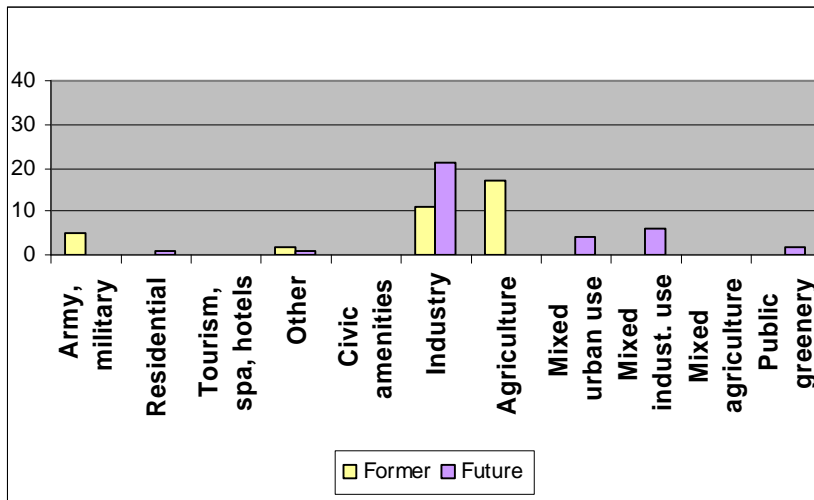
## Structure of their original use

Former prevailing use of locality	Frequency	%	Area (ha)	%
Agriculture	17	48,6	206,7	55,5
Industry	11	31,4	92,5	24,8
Army, military spaces	5	14,3	65,7	17,7
Other	2	5,7	7,4	2,0
<b>TOTAL</b>	<b>35</b>	<b>100</b>	<b>372,3</b>	<b>100</b>

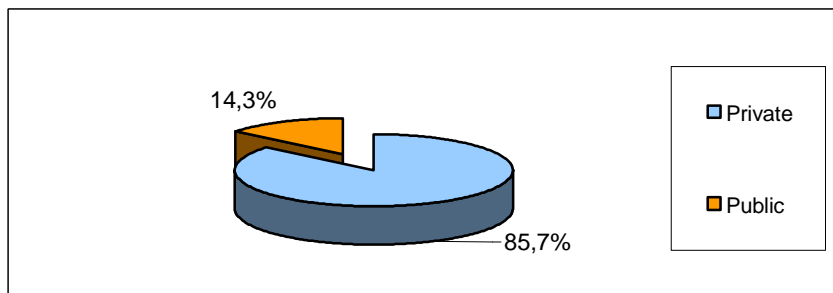
## Structure of their future use

Most suitable future use of locality	Frequency	%
Industry	21	60,0
Mixed industrial use	6	17,1
Mixed urban use	4	11,4
Public greenery	2	5,7
Other	1	2,9
Residential	1	2,9
<b>TOTAL</b>	<b>35</b>	<b>100</b>

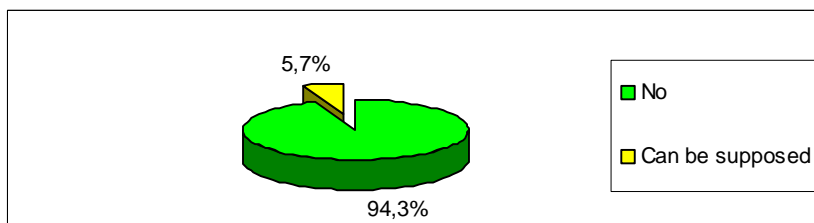
### Comparison of their original and future use



### Ownership



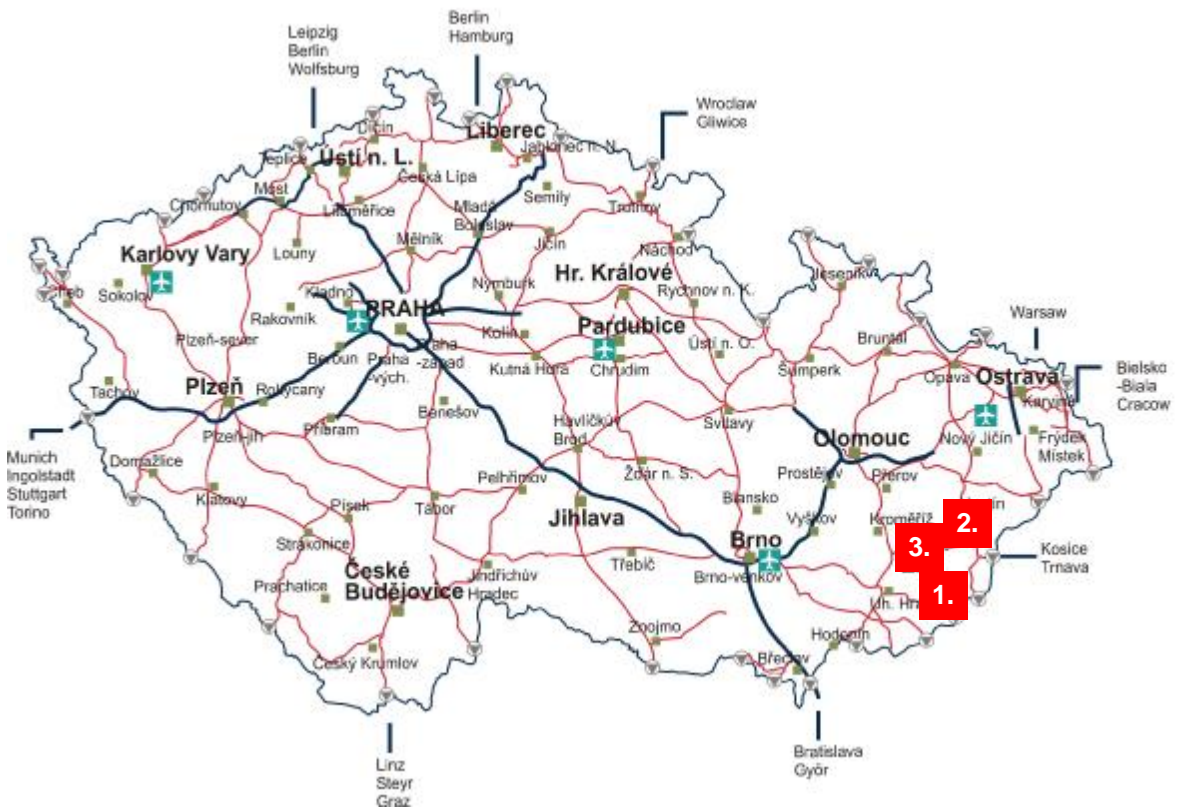
### Ecological burdens





## Sites

1. Slavcin – Vlarske strojirny
2. Halenkov – Military storage facility
3. Zlin – Svit



## 1. Slavičín - Vlárské strojírny

General Information		
Total area of brownfield (in m <sup>2</sup> )		617 500
Location	Region	Zlin
	District	Zlin
	Town	Slavicin
	Address	Slavicin, Lipova Street
Land ownership	<input checked="" type="checkbox"/> private <input type="checkbox"/> public 30 owners; majority owner Intec s.r.o.	
Zoning	<input checked="" type="checkbox"/> industry <input type="checkbox"/> logistic <input checked="" type="checkbox"/> service <input type="checkbox"/> commerce	

### Site specification

The site contains 100 structures, of which 80% are suitable for further use. Area is located in the Bile Karpaty/White Carpathians protected landscape area. Most suitable future use is for industrial production and warehousing.



## Transport infrastructure

	Distance from site (in km)	Name
Highway	75 km	D1 (Prague – Brno – Lipník nad Bečvou)
Express way	-	-
Intern. Airport	45 km	Kunovice
Railway	1 km	Divnice
Railway siding	<input checked="" type="checkbox"/> on site <input type="checkbox"/> possible to build <input type="checkbox"/> not possible	



## Infrastructure

	Distance from site (in m)	Voltage / Pressure	Pipe diameter	Capacity
Electricity	on site			
Drinking water	on site			
Service water	-			
Well	-			
Sewage	on site			
Gas	on site			

## Ecological studies

Hydrogeological survey	<input type="checkbox"/> has been conducted
Environmental audit	<input type="checkbox"/> has been conducted
Eventual limitation of utilization	Ecological burdens supposed to be on site.

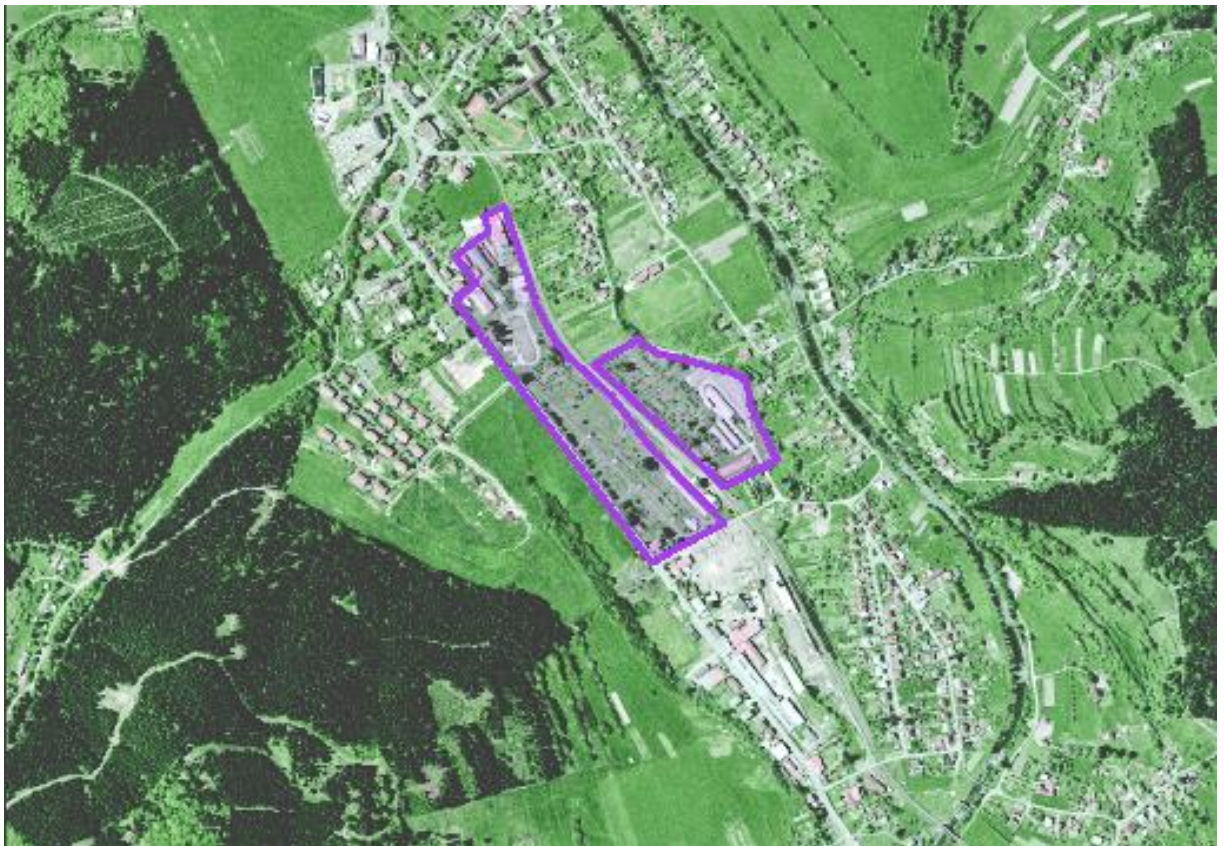


## 2. Halenkov - Military storage facility

General Information		
Total area of brownfield (in m <sup>2</sup> )		106 800
Location	Region	Zlin
	District	Vsetin
	Town	Halenkov
	Address	Halenkov
Land ownership	<input type="checkbox"/> private <input checked="" type="checkbox"/> public Municipality of Halenkov	
Zoning	<input checked="" type="checkbox"/> industry <input type="checkbox"/> logistic <input type="checkbox"/> service <input type="checkbox"/> commerce	

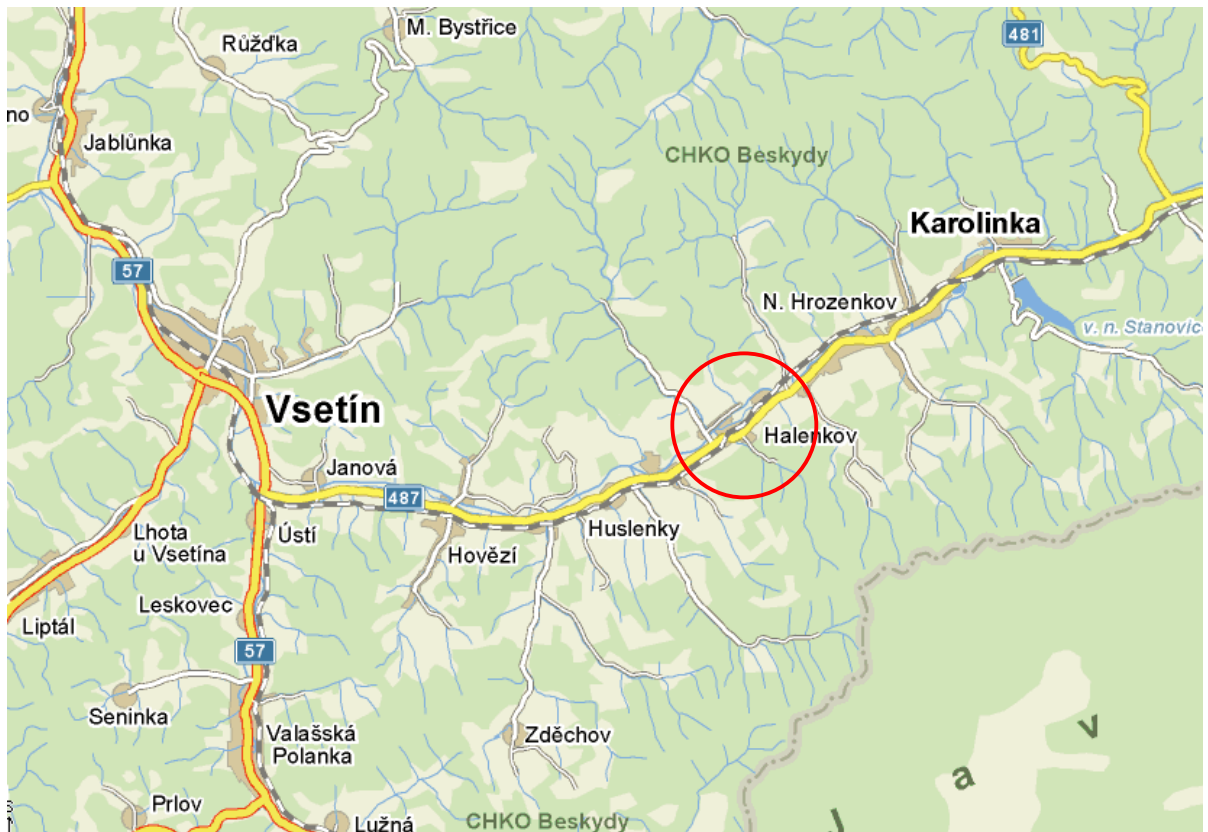
### Site specification

Former military storage facility which contains two types of buildings: above-ground and subterranean (necessary to remove). The site is located in the Beskydy protected landscape area. Most suitable future use is mixed zone of civic amenities, services, residences, and sport.



## Transport infrastructure

	Distance from site (in km)	Name
Highway	70 km	D1 (Prague – Brno – Lipník nad Bečvou)
Express way	-	-
Intern. Airport	68 km	Ostrava Mosnov
Railway	0 km	Helenkov
Railway siding	<input type="checkbox"/> on site <input checked="" type="checkbox"/> possible to build <input type="checkbox"/> not possible	



## Infrastructure

	Distance from site (in m)	Voltage / Pressure	Pipe diameter	Capacity
Electricity	on site			
Drinking water	on site			
Service water	-			
Well	-			
Sewage	on site			
Gas	on site			

## Ecological studies

Hydrogeological survey	<input type="checkbox"/> has been conducted
Environmental audit	<input type="checkbox"/> has been conducted
Eventual limitation of utilization	Ecological burdens supposed to be on site.



### 3. Zlín - Svit

General Information		
Total area of brownfield (in m <sup>2</sup> )	696 300	
Location	Region	Zlín
	District	Zlín
	Town	Zlín
	Address	Zlín
Land ownership	<input checked="" type="checkbox"/> private 72 owners <span style="float: right;"><input checked="" type="checkbox"/> public</span>	
Zoning	<input checked="" type="checkbox"/> industry <input type="checkbox"/> logistic <input type="checkbox"/> service <input type="checkbox"/> commerce	
Area for further expansion	Production and civic amenities	

#### Site specification

Former Baťa shoe works founded in 1894. Most of the structures date back to the 1920s and 1930s - most prosperous time of the Baťa works which lasted until 2nd world war. After 1949 the factory was renamed from Baťa works to Svit Zlín. The site is located in the centre of Zlín. The buildings on this site are in relatively good condition. City of Zlín is purchasing the site from different private owners.



## Transport infrastructure

	Distance from site (in km)	Name
Highway	43 km	D1 (Prague – Brno – Lipník nad Bečvou)
Express way	-	-
Intern. Airport	32 km	Kunovice
Railway	0,5 km	Helenkov
Railway siding	<input type="checkbox"/> on site <input checked="" type="checkbox"/> possible to build <input type="checkbox"/> not possible	



## Infrastructure

	Distance from site (in m)	Voltage / Pressure	Pipe diameter	Capacity
Electricity	on site			
Drinking water	on site			
Service water	-			
Well	-			
Sewage	on site			
Gas	on site			

## Ecological studies

Hydrogeological survey	<input type="checkbox"/> has been conducted
Environmental audit	<input type="checkbox"/> has been conducted
Eventual limitation of utilization	Any ecological burdens were not found.

